



2 AC and 3.45 AC

**Industrial land available**  
within Gragny Central submarket



# Land for sale or lease

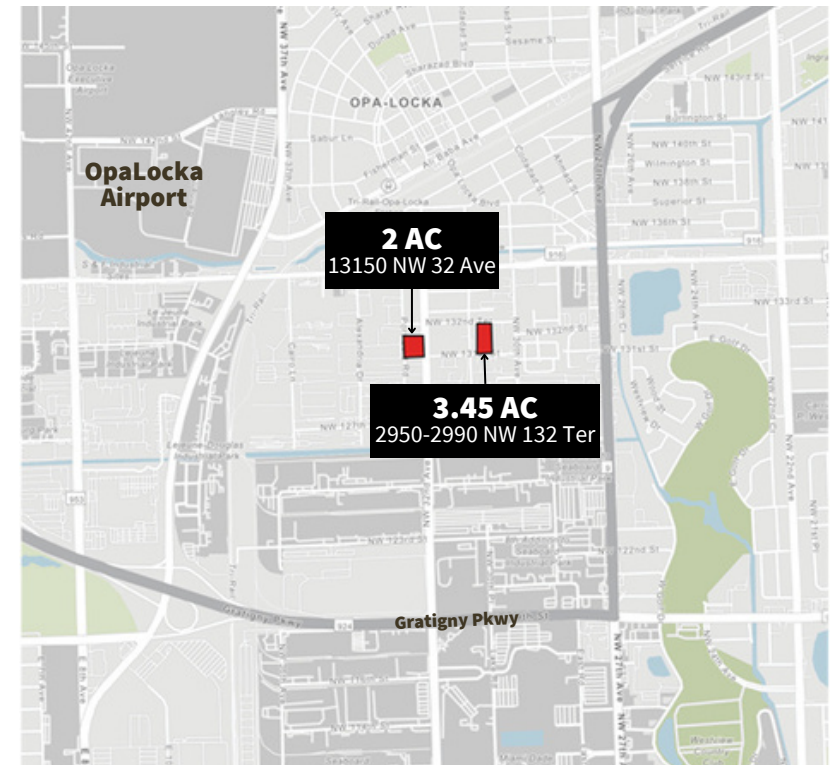
**OpaLocka, FL 33054**

## Location

- North of Gragny Parkway
- Within Gragny Central submarket
- Immediate access to Gragny Parkway (924), Florida's Turnpike, and I-95.
- 8 miles to Miami International Airport
- 13 miles to Port of Miami
- 15 miles to Port Everglades

## Two offerings:

- **13150 NW 32nd Avenue:**
  - 2 AC total
  - For sale \$6,500,000.00
  - For lease \$4.00/PSF NNN
- **2950-2990 NW 132nd Terrace:**
  - 3.45 AC total
  - For sale \$11,000,000.00
  - For lease \$4.00/PSF NNN



## Contacts:

**Audley Bosch**  
305 960 8404  
audley.bosch@jll.com

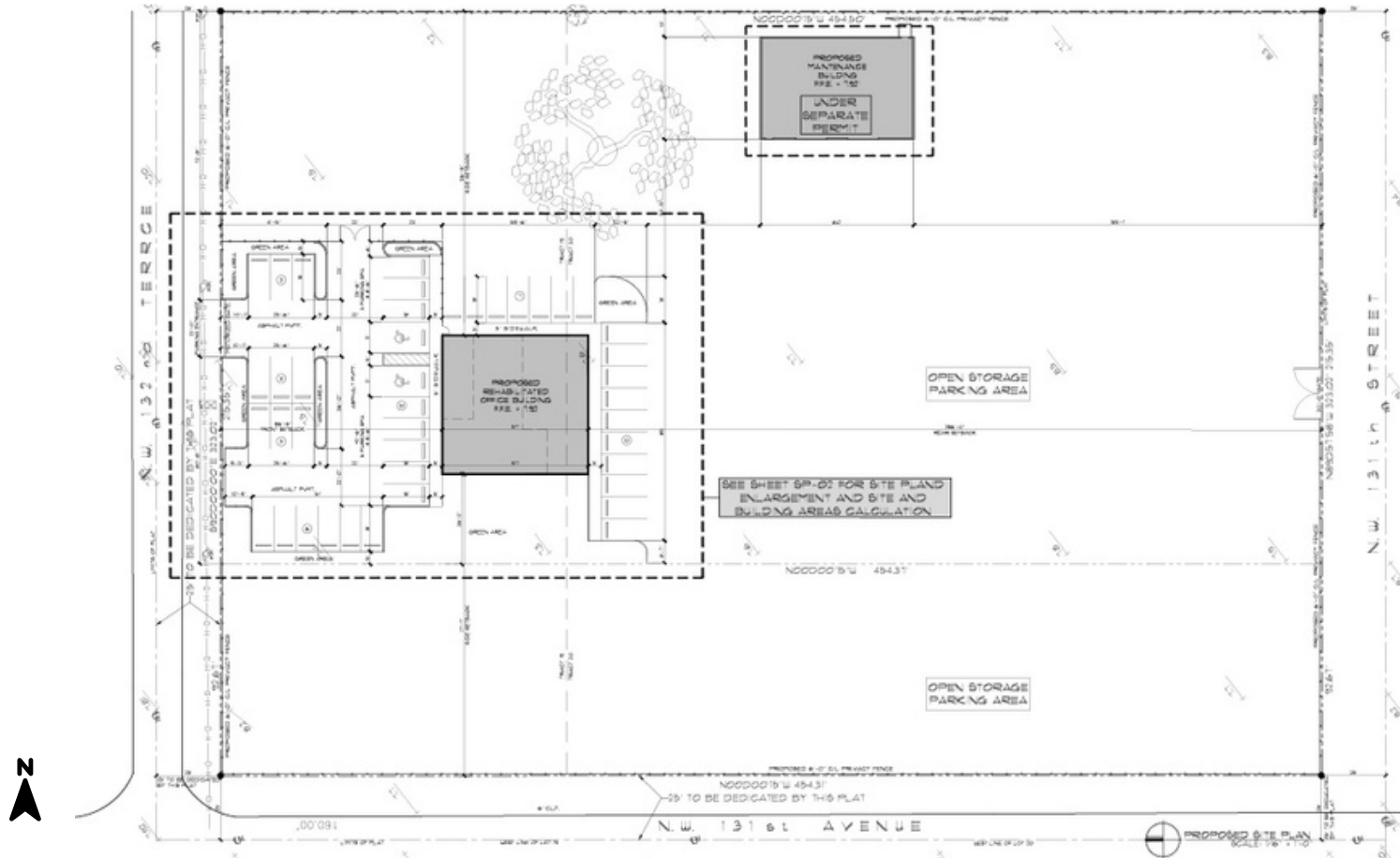
**Matt Maciag**  
305 960 8409  
matt.maciag@jll.com





# 3.45 AC (150,282 SF)

2950-2990 NW 132 Terrace, OpaLocka, FL 33054



- Zoned for Heavy Industrial
- Conceptual plan includes office/service building & paving on parcel

- For sale \$11,000,000.00
- For lease \$4.00/PSF NNN