



CREATIVE OFFICE SPACE
at
CityWaySM



231 Virginia Avenue



WORK AT CITYWAY



3,254 s.f. of creative office space with a 2,340 s.f. patio



Walkable to The Alexander Hotel and Eli Lilly Corporate HQ



Restrooms on the floor



Access to state-of-the-art Irsay Family YMCA



\$25.00 / s.f., NNN



Access to conferencing space at The Alexander



Private, garage and street parking available



Walkable to Lucas Oil, Circle Centre Mall and more

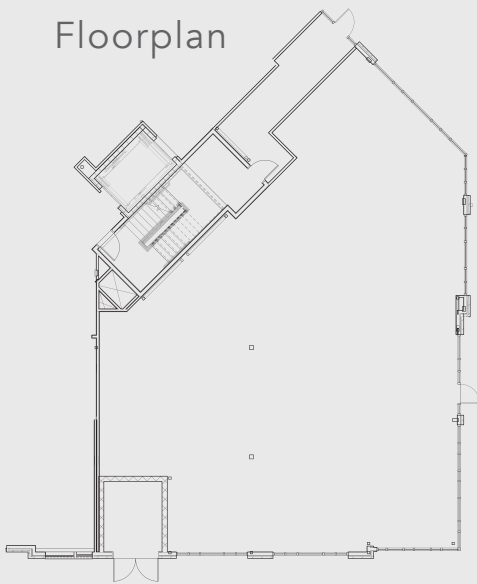


Located on Virginia Ave with direct access to the Cultural Trail



Access to abundant amenities including The Alexander Hotel, YMCA, Yol, Market Table, Plat 99 Bar, Qdoba, Nesso Coastal Italia, Salon Lofts, CVS, greenspace plus additional retail / restaurants being added on the CityWay Campus

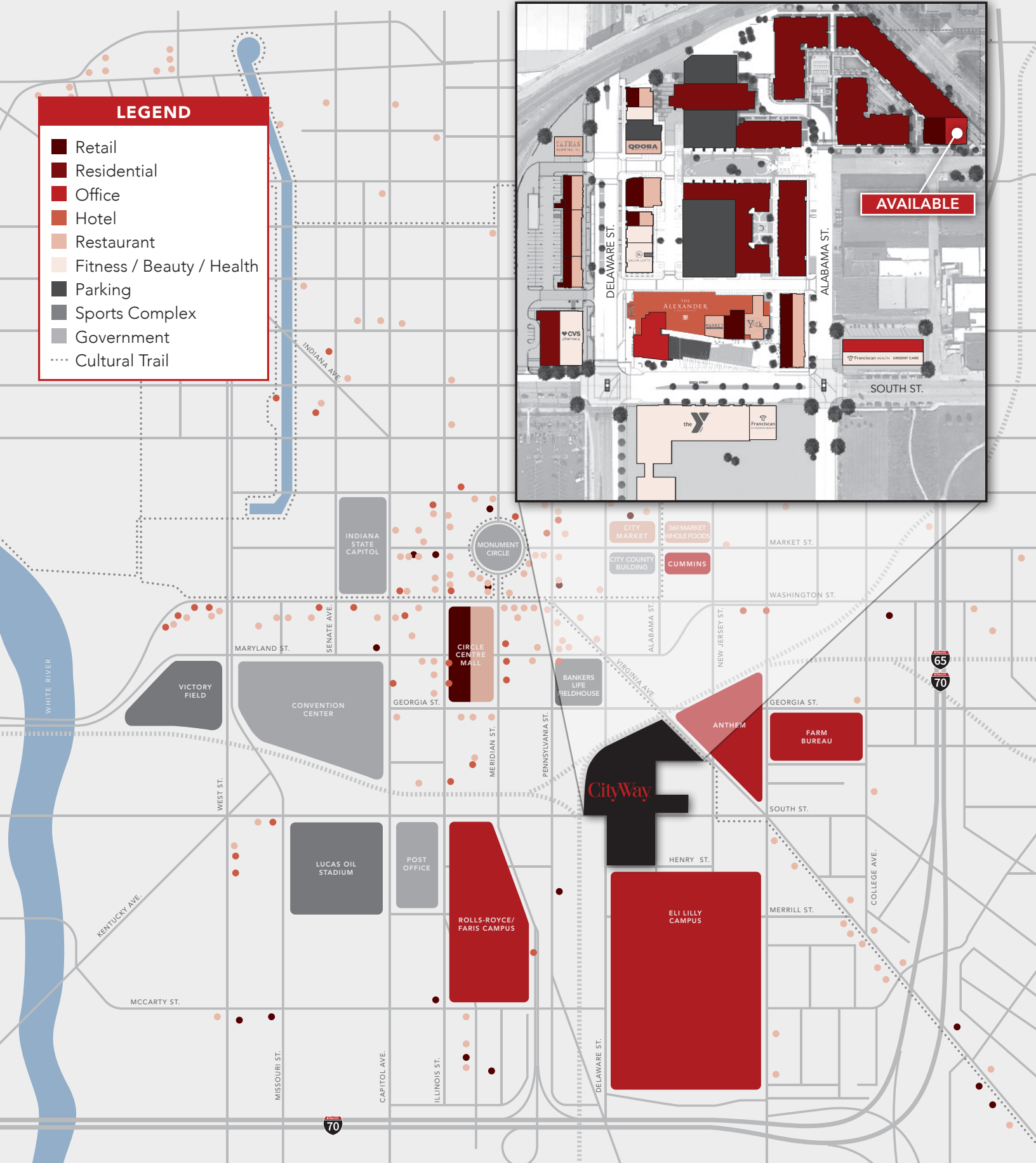
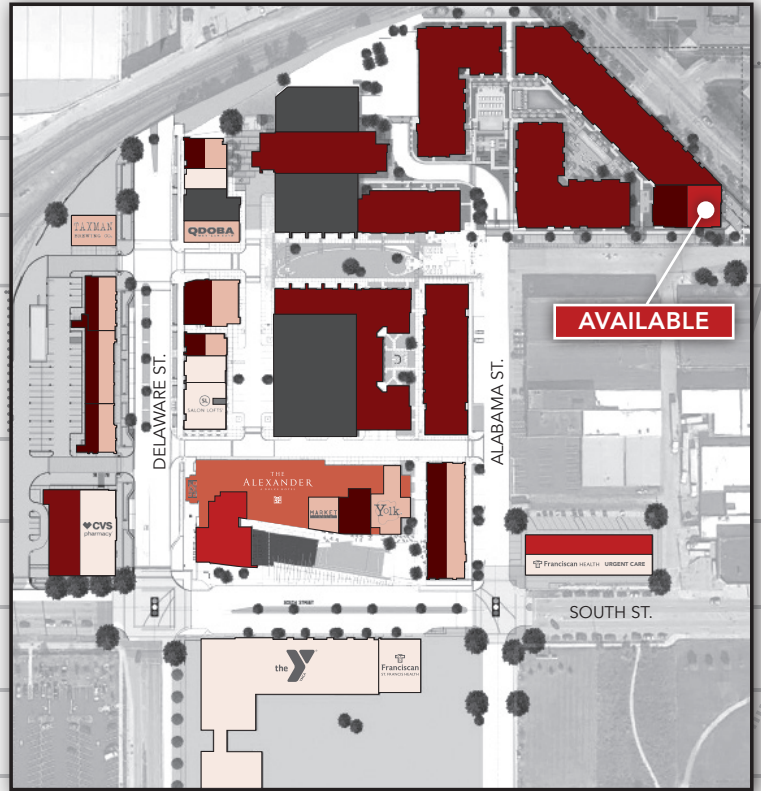
Floorplan



SURROUNDED BY OUTSTANDING AMENITIES

LEGEND

- Retail
- Residential
- Office
- Hotel
- Restaurant
- Fitness / Beauty / Health
- Parking
- Sports Complex
- Government
- Cultural Trail



CREATIVE OFFICE SPACE

at

CityWaySM



231 Virginia Avenue



JOHN ROBINSON
+1 317 810 7172
john.robinson@am.jll.com

BRITTANY SHULER
+1 317 810 7176
brittany.shuler@am.jll.com

