



# For Sublease

## Property Overview

<b>Available Space:</b>	14,422 - 28,844±SF located on two contiguous floors
<b>Remaining Term:</b>	Through August 31, 2024
<b>Availability:</b>	Q1 2021
<b>Rental Rate:</b>	\$18.00 FSG
<b>Parking Ratio:</b>	5.0/1,000 RSF

### Property Overview:

- The sublease offers a plug and play opportunity with furniture available, 364 seats in place, multiple conference/training rooms and break room
- Prominently positioned on Datapoint Drive, just off IH-10 between Loops 410 and 1604, providing superior visibility and rapid connectivity to some of San Antonio's most popular retail destinations and largest economic drivers
- Multiple fiber providers with redundant fiber loop
- \$5.0 million in capital improvements to the property since 2015

8415 Datapoint Drive  
Suites 200 & 300  
San Antonio, Texas

**Jeff Miller**  
Managing Director  
+1 210 308 9888

[Jeff.miller2@am.jll.com](mailto:Jeff.miller2@am.jll.com)

**Ben Jordan**  
Vice President  
+1 210 308 9888  
[Ben.jordan@am.jll.com](mailto:Ben.jordan@am.jll.com)



The information contained herein is obtained from sources believed to be reliable. However, Jones Lang LaSalle makes no guarantees, warranties or representations as to the completeness or accuracy thereof. The presentation of this property is submitted subject to errors, omissions, change of price or conditions, and is subject to prior sale, lease or withdrawal without notice.

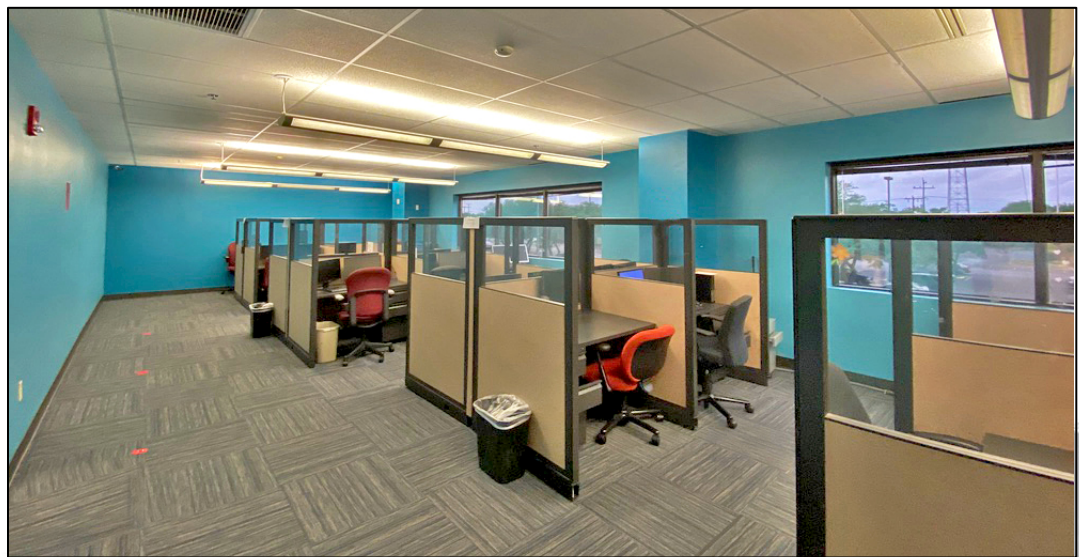
## Property photos: building lobby, suites 200 and 300



8415 Datapoint Drive  
Suites 200 & 300  
San Antonio, Texas

**Jeff Miller**  
Managing Director  
+1 210 308 9888  
[Jeff.miller2@am.jll.com](mailto:Jeff.miller2@am.jll.com)

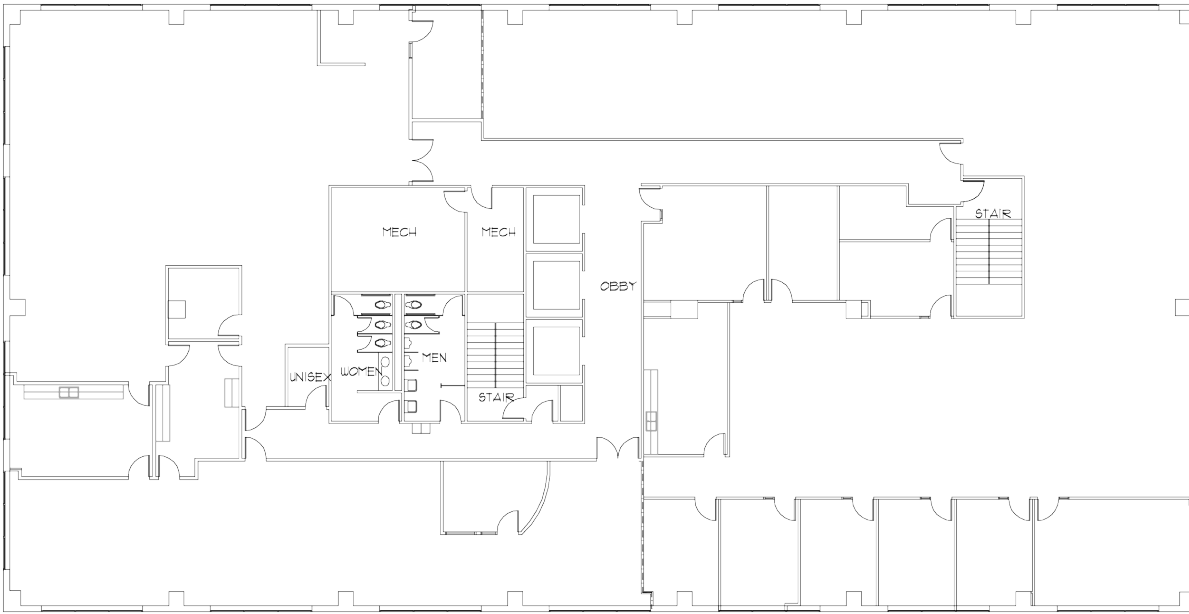
**Ben Jordan**  
Vice President  
+1 210 308 9888  
[Ben.jordan@am.jll.com](mailto:Ben.jordan@am.jll.com)



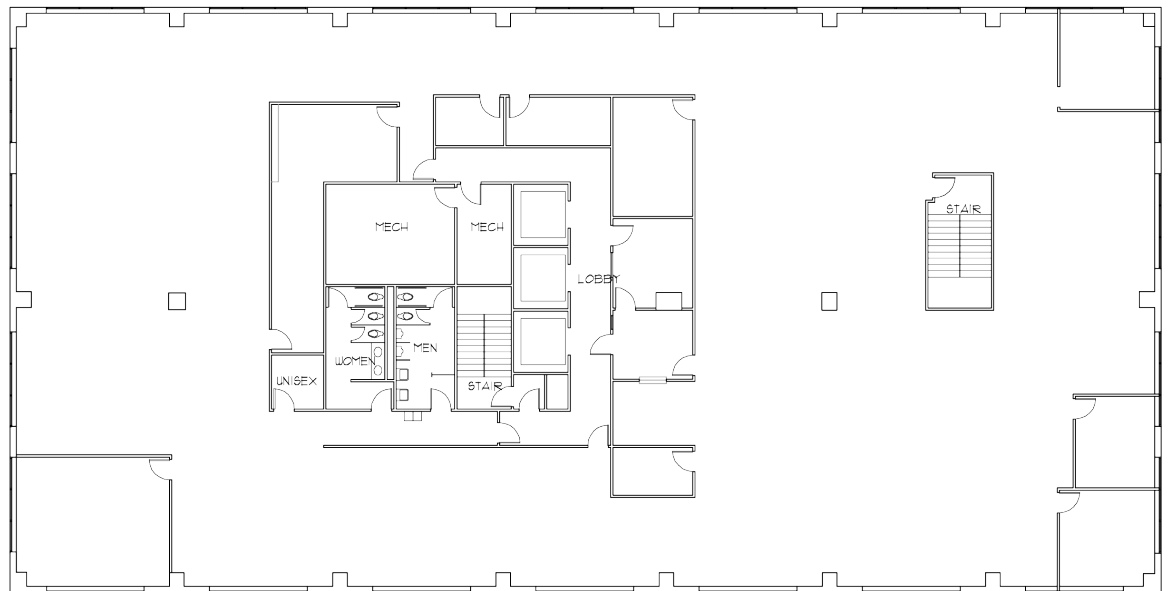
The information contained herein is obtained from sources believed to be reliable. However, Jones Lang LaSalle makes no guarantees, warranties or representations as to the completeness or accuracy thereof. The presentation of this property is submitted subject to errors, omissions, change of price or conditions, and is subject to prior sale, lease or withdrawal without notice



## Floor plans: up to 28,844± SF available



**Suite 200: 14,422± SF**



**Suite 300: 14,422± SF**

For more information, please contact:

**Jeff Miller**

Managing Director

+1 210 308 9888

[Jeff.miller2@am.jll.com](mailto:Jeff.miller2@am.jll.com)

**Ben Jordan**

Vice President

+1 210 308 9888

[Ben.jordan@am.jll.com](mailto:Ben.jordan@am.jll.com)

The information contained herein is obtained from sources believed to be reliable. However, Jones Lang LaSalle makes no guarantees, warranties or representations as to the completeness or accuracy thereof. The presentation of this property is submitted subject to errors, omissions, change of price or conditions, and is subject to prior sale, lease or withdrawal without notice

