

532 Market

7,417 RSF Flagship Retail for Sublease



THE NEIGHBORHOOD

The North Financial District is home to more than 20 million square feet of Class A offices and the headquarters for numerous Fortune 100 companies including Wells Fargo and McKesson Corporation. Serving this dense daytime population are world class food and beverage operators: the likes of Leo's Oyster Bar, Michael Mina, Pabu, The Treasury and Wayfare Tavern. Served by the highest trafficked public transportation stations in the bay area rapid transportation (BART) system, Embarcadero and Montgomery, over 90,000 daytime employees access the sub market only several blocks away.



Equinox, The Treasury, Blue Bottle Coffee, Mixt



BY THE NUMBERS



174,997

TOTAL
EMPLOYEES



20MM

CLASS A
OFFICE SPACE



\$2.3B

CONSUMER
SPENDING



47,848

EMBARCADERO
BART EXITS PER DAY



45,091

MONTGOMERY
BART EXITS PER DAY



6,706

HOTEL
ROOMS

AVERAGE ANNUAL SPENDING



Apparel

\$4,103.29



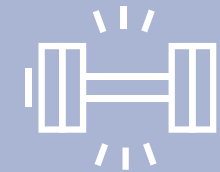
Entertainment

\$5,636.25



HH Goods

\$3,608.31



Health & Beauty

\$9,483.05



Eating Out

\$6,899.09



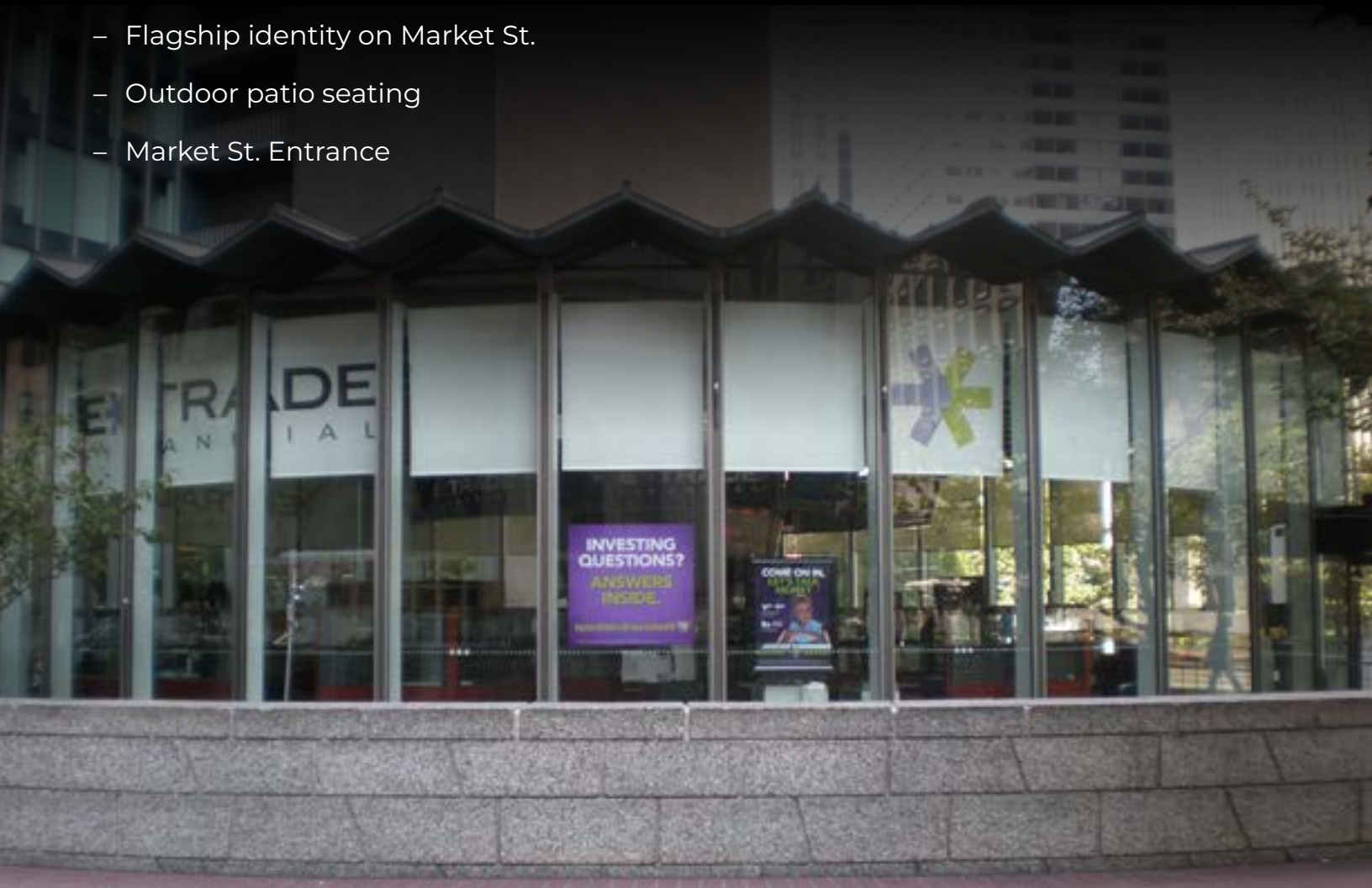
Travel

\$3,858.94

In the heart of **San Francisco's Business District**

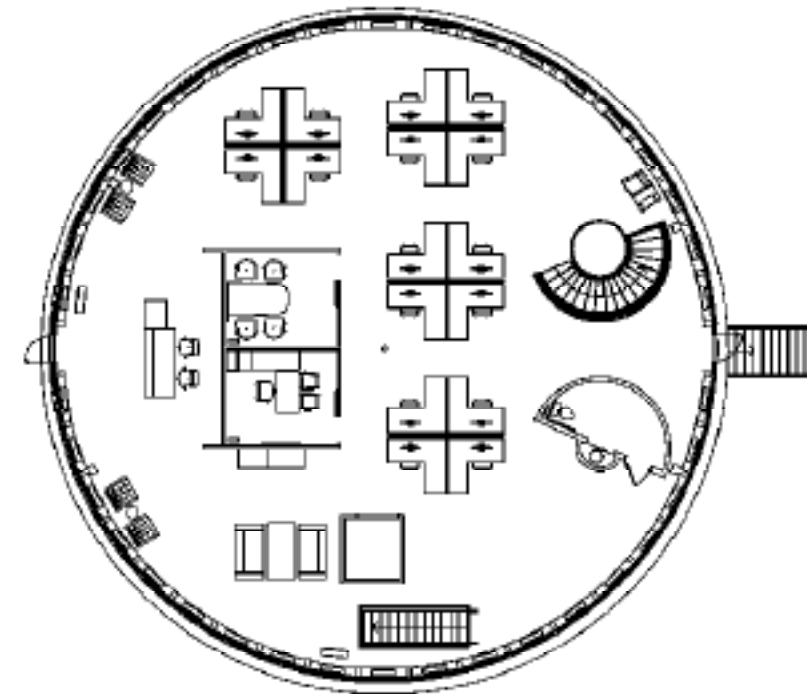
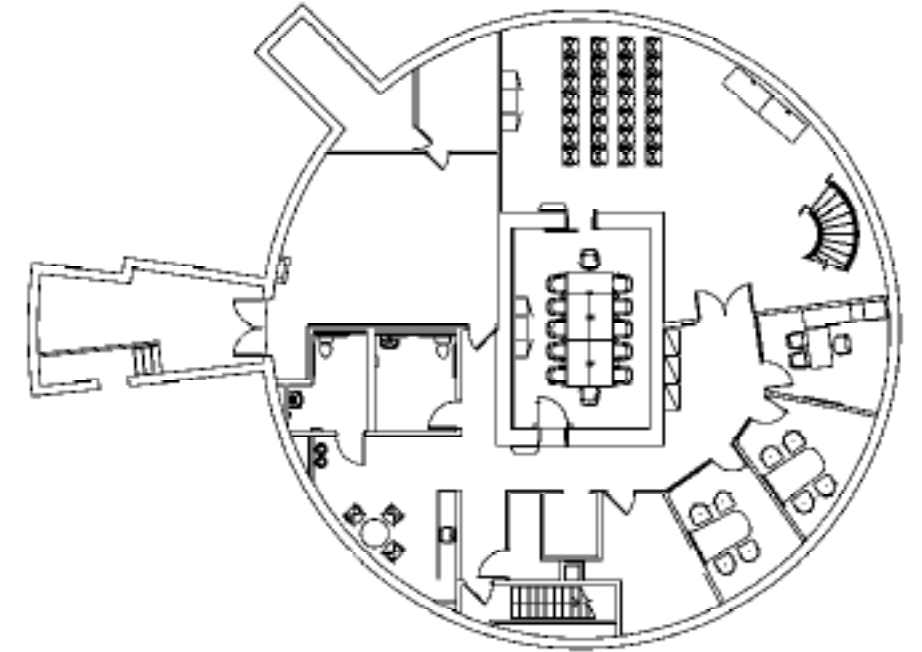
THE SPACE

- ± 7,417 SF
- Excellent CBD location
- Premium visibility
- Freestanding building
- Flagship identity on Market St.
- Outdoor patio seating
- Market St. Entrance



FLOOR PLAN

GROUND FLOOR -
4,531 RSF



FLOOR PLAN

LOWER LEVEL -
2,886 RSF



BEN LAZZARESCHI

Managing Director

+1 415 228 3070

RE Lic# 01414579

ben.lazzareschi@am.jll.com

JUSTIN CHOI

Associate

+1 415 395 7262

RE Lic# 02107928

justin.choi@am.jll.com

DAVID KESSLER

Associate

+1 415 510 6957

RE Lic# 021112097

david.kessler@am.jll.com

