



ATRIUM

Where work comes to LIFE.

483,000 square feet of highly amenitized Class-A office space.

131,000 contiguous square feet on the 2nd floor and
15,000 square feet on the 1st floor available immediately.



**A space unlike
anywhere else.**



DIFFERENTIATING style

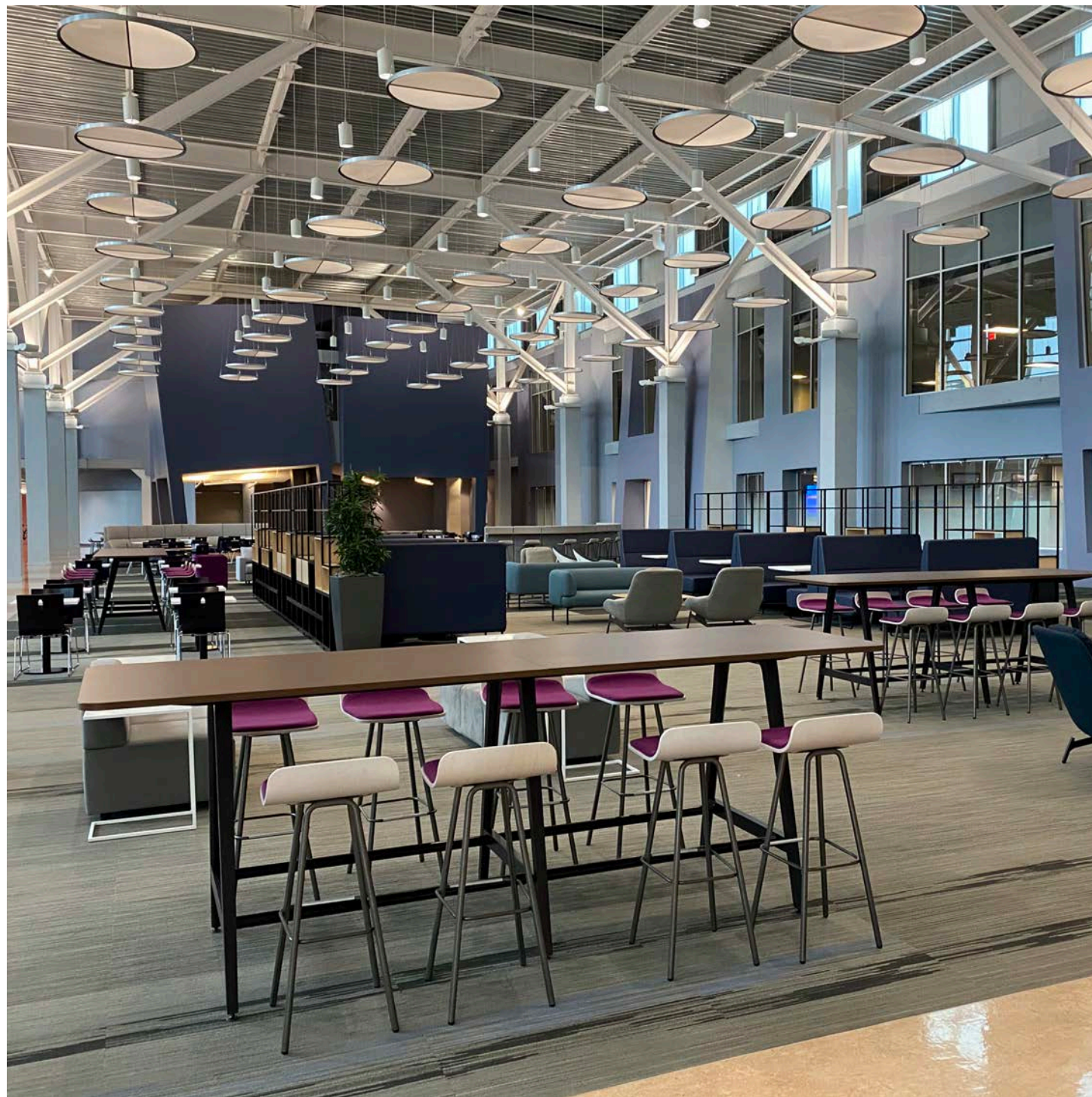
Large and efficient floorplates ideal for creating flexible workspace.

Oversized windows providing an abundance of natural light.

Award winning atrium lobby with 37' ceilings.

Striking design features and dramatic architecture creating a vibrant office campus.





with
BRIGHT LIGHT
and open spaces

A spacious, bright and lively environment designed for socialization and collaboration, *The Street* is Atrium's unique common area.

The area features large windows combined with a comfortable mixture of soft seating, functional workspaces and dining options.

The Street is an activated and inventive space that creates the ideal place to connect with colleagues, eat, work or relax.





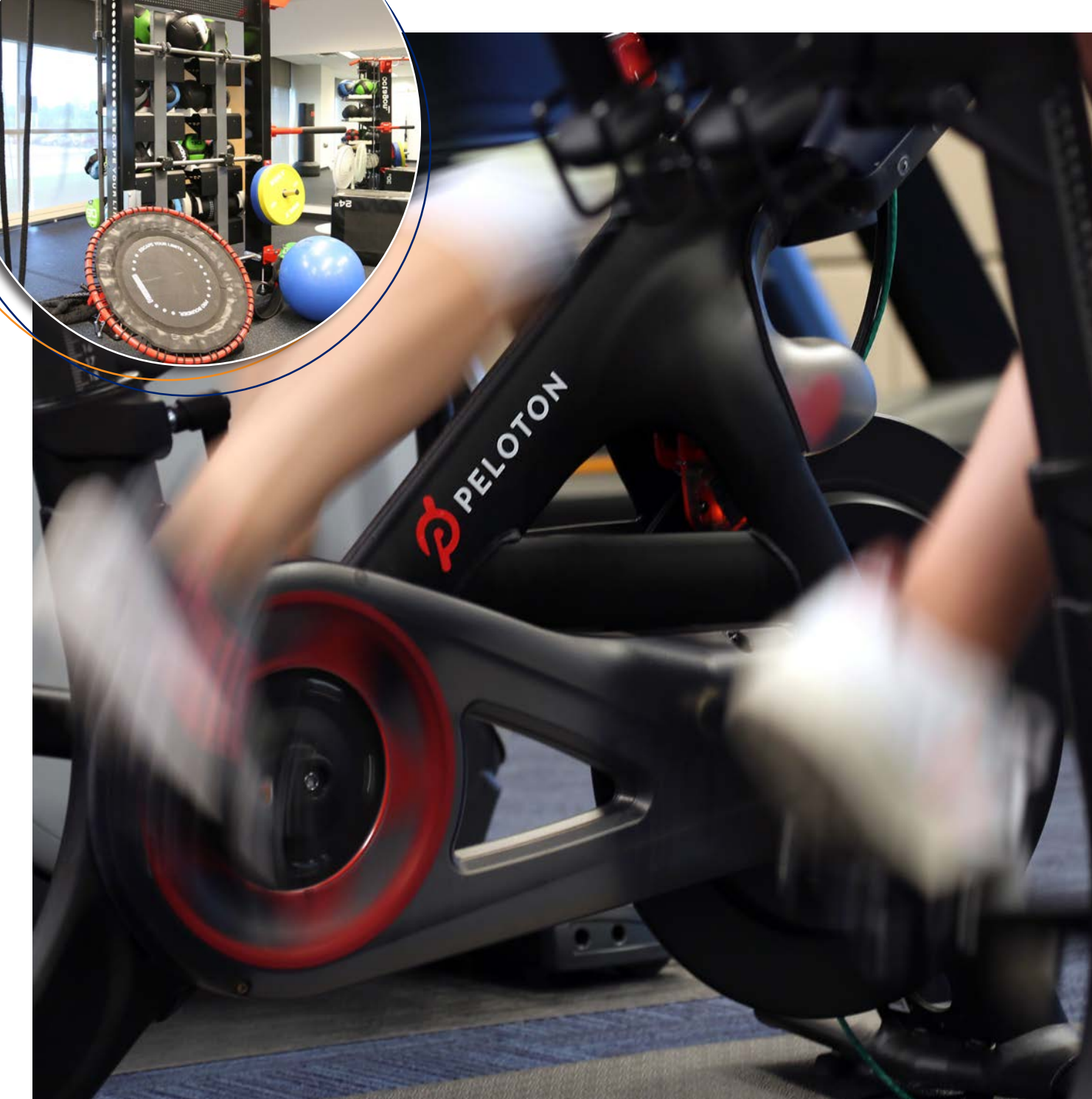
room to **RECHARGE**

Spacious cafe with a rotating menu offers diverse and fresh-made food options to refuel.

Quiet areas to relax and vibrant spaces to recharge create a dynamic and active business environment.

Lounge refresh provides attractive, comfortable spaces to socialize with colleagues throughout the day.





a space to **REVIVE**

The 17,000 sf fitness facility is the largest in the market.

The recently renovated space features brand new, state-of-the-art equipment as well as full-service locker rooms with towel service.

Peloton® bikes, newly redesigned yoga and crossfit studios, and professionally instructed fitness classes are available to all tenants.



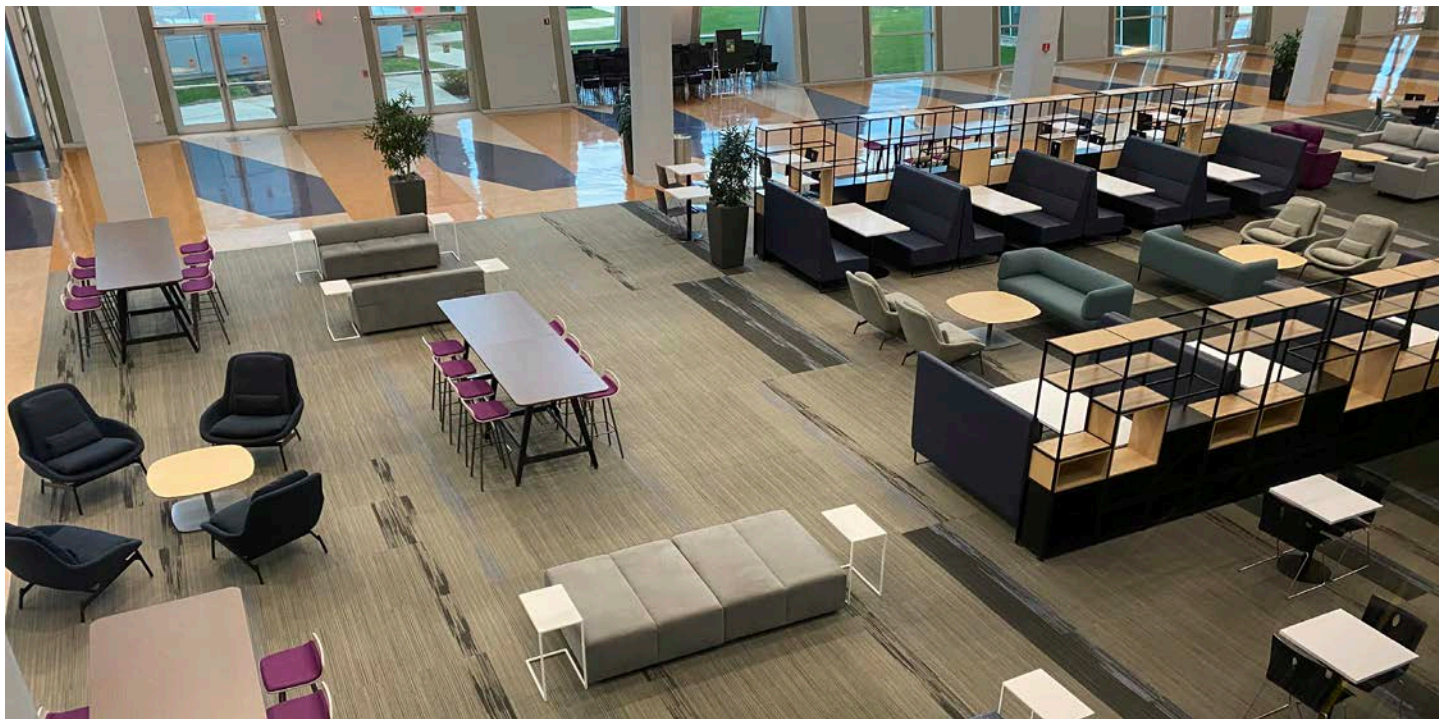


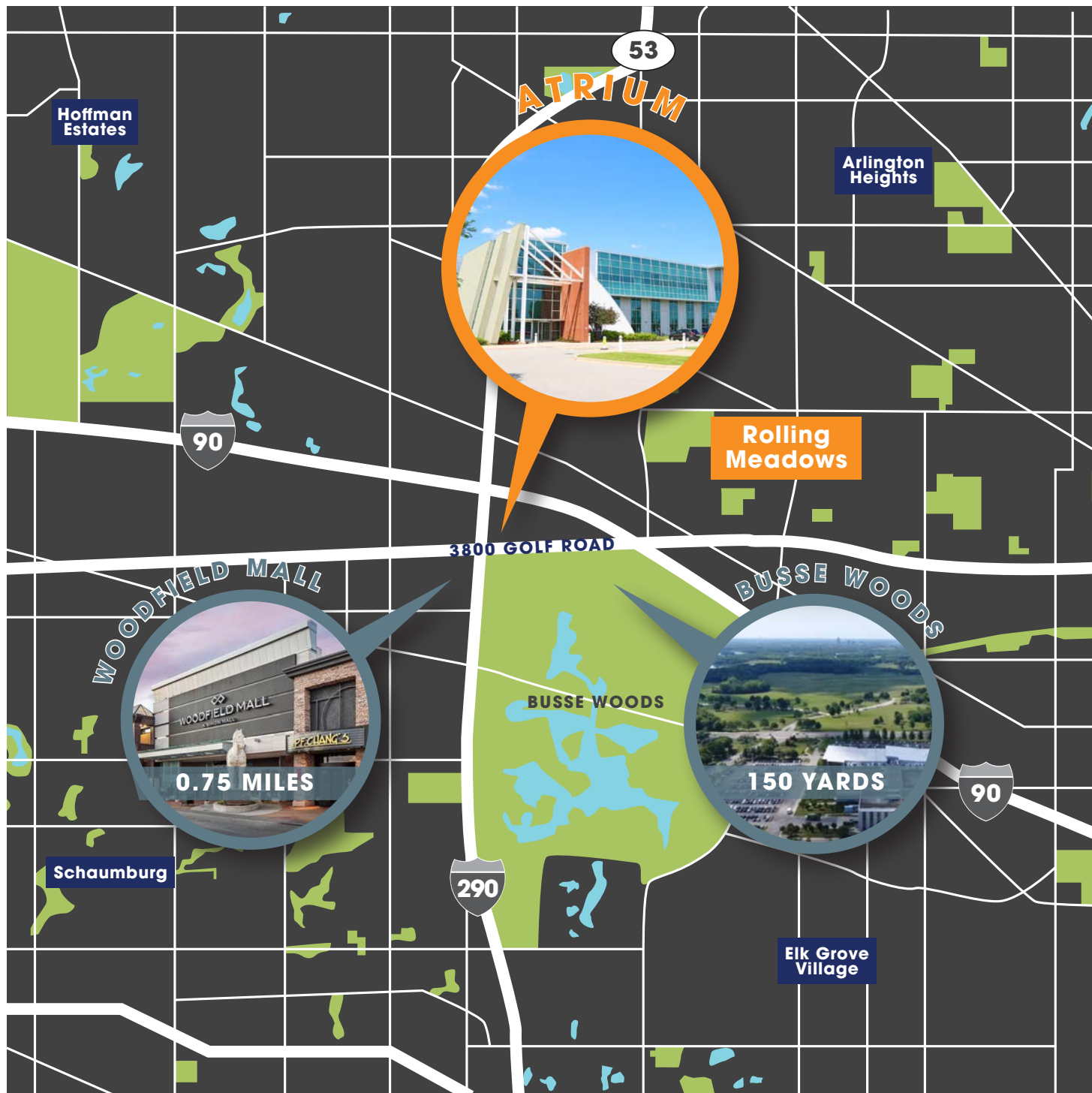
capacity to **COLLABORATE**

The *Conference Business Center* is an 11,000 sf amenity space featuring seven different conference room options with modern technical and audio-visual capabilities.

The only building in the submarket featuring a fully-integrated, two-story auditorium, the *Woodfield Room* is 5,500 sf and has capacity for up to 350 people.

Multiple informal meeting and break-out areas throughout the building provide areas for small and large groups.





everything
WITHIN REACH

Situated immediately adjacent to the Woodfield Mall, with more than 2,500,000 sf of high-end retail and dining options.

Directly across the street from the 3,500-acre Busse Woods Preserve, which features more than 13 miles of walking and biking trails.

More than 300 stores and 325 dining locations in the immediate vicinity.

Shaw's
CRAB HOUSE

THE
CAPITAL
G•R•I•L•L•E

MAGGIANO'S
LITTLE ITALY

WILDFIRE
STEAKS, CHOPS & SEAFOOD



SEPHORA

COACH
NEW YORK

Kiehl's
SINCE 1851





easy & convenient **ACCESSIBILITY**

Situated at the confluence of I-290, I-90 and IL Route 53, Atrium is located at the heart of the Northwest suburban market.

Easy access and an overall parking count of 5.1:1,000 sf with the ability to provide up to a 6.6:1,000 sf ratio for a 146,000 sf tenant.

Available signage opportunities allows for prominent brand visibility to the nearly 350,000 cars passing every day.

348,000 CARS

passing by
Atrium every day



11 MILES

to O'Hare
International
Airport



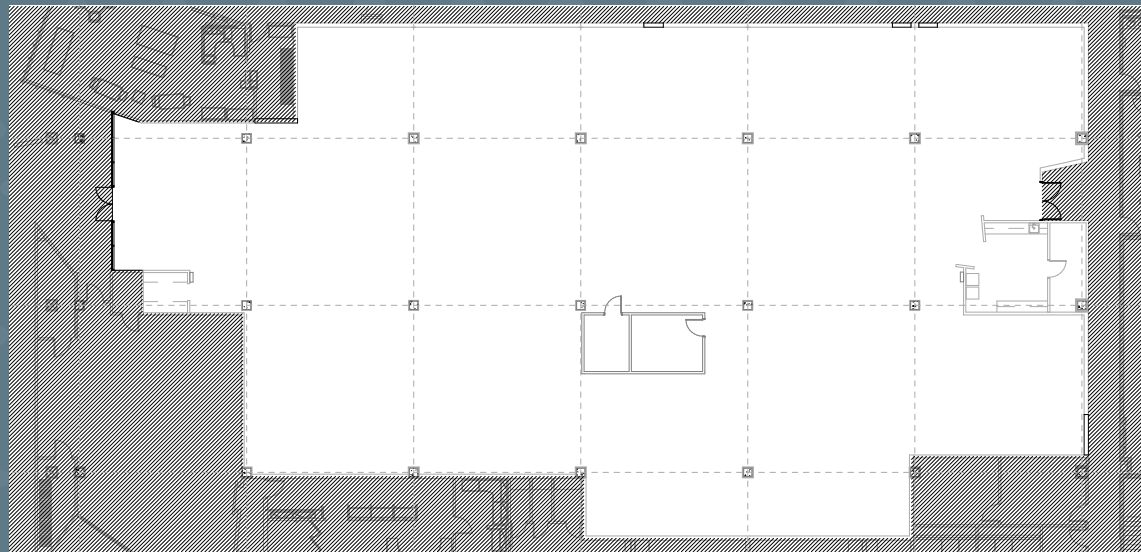
large and efficient **FLOORPLATES**

Atrium boasts large floor plates that inspire creativity and enhance productivity.

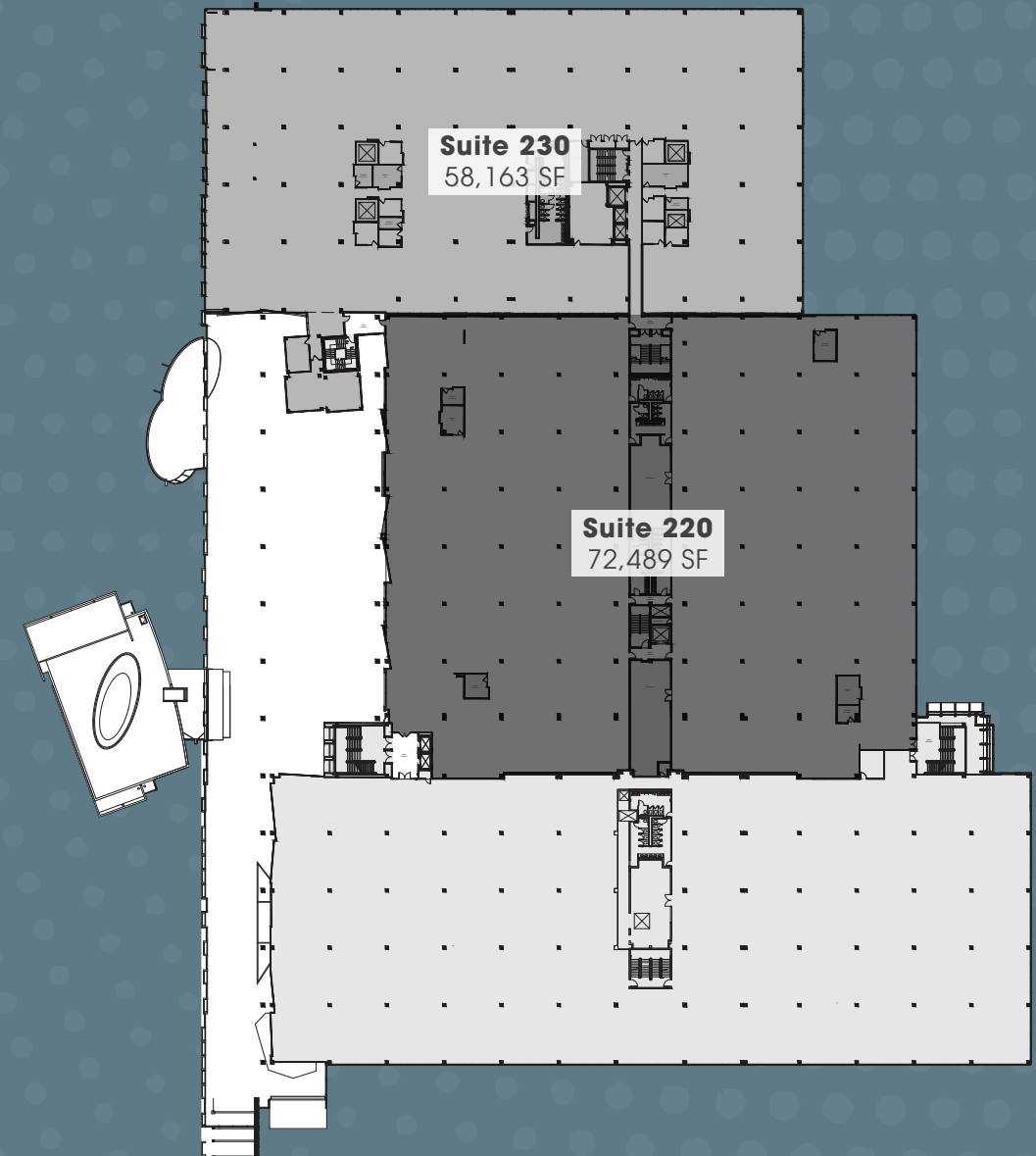
Suite 220 looks upon *The Street* and benefits from natural light and open space, providing the ideal workspace for employees.

Suite 115 is a whiteboxed space that is directly off *The Street*.

Suite 115 15,328 SF



Suite 220+230 130,652 SF





ATRIUM

3800 Golf Road
Rolling Meadows, IL 60008

For leasing information, please contact:

Fred Ishler, Principal
fred.ishler@avisonyoung.com

D | 312.796.0368

C | 630.408.9366

**AVISON
YOUNG**