



# 100 Broadway

Between Pine Street and Wall Street  
Core FiDi Storefront Opportunity



## Space

Ground Floor	5,806 sf
Lower Level	2,297 sf
Mezzanine	1,950 sf
<u>Second Floor</u>	<u>11,214 sf</u>
<b>Total</b>	<b>21,267 sf</b>

## Frontage

Approximately 60 feet

## Term

Through 1/31/2032

## Possession

Arranged

## Asking Rent

\$1,400,000 per annum gross

## Highlights

- Strong curb appeal on Broadway
- Heavy 7-day pedestrian activity catering to the heavy office population, tourists and residents
- Steps to train stations - Wall Street, Rector Street and Broad Street
- Potential to be part of the continuously evolving downtown scene

## Neighbors

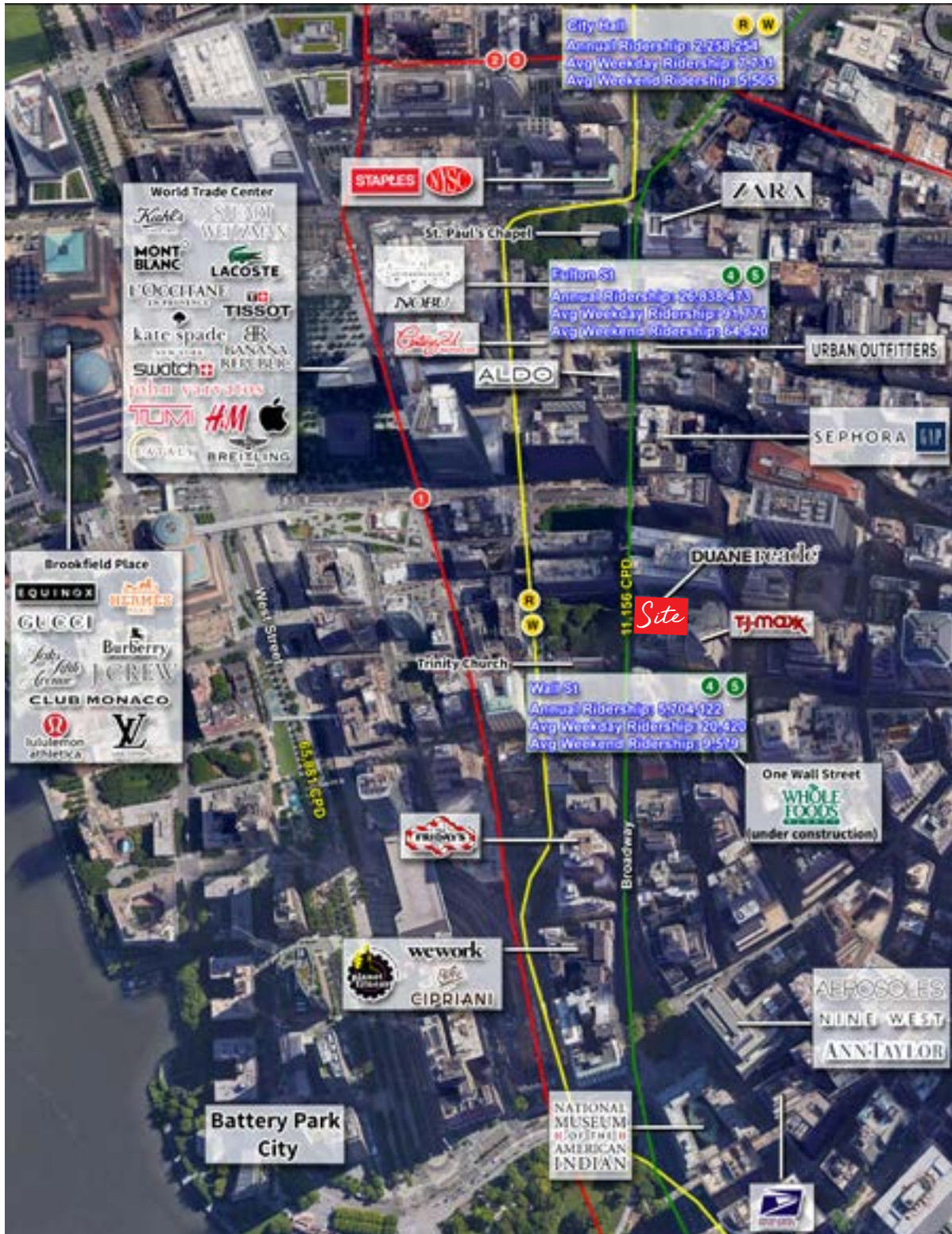


**Michael Riley**  
+1 212 812 5901  
Michael.Riley@jll.com

**Patrick A. Smith**  
+1 212 812 5888  
PatrickA.Smith@jll.com

# 100 Broadway

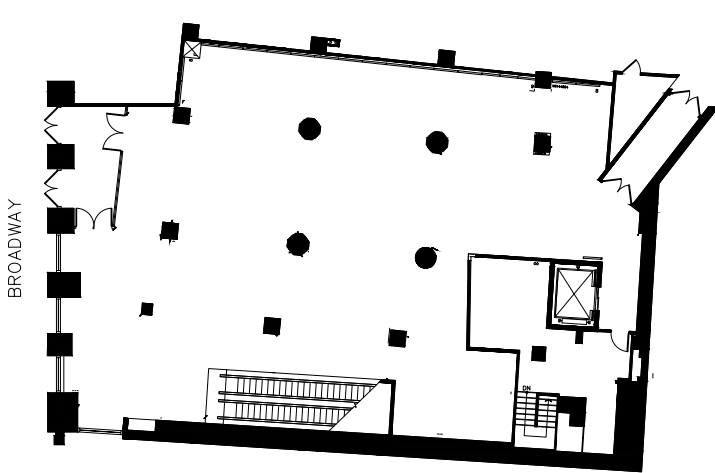
## Area Map



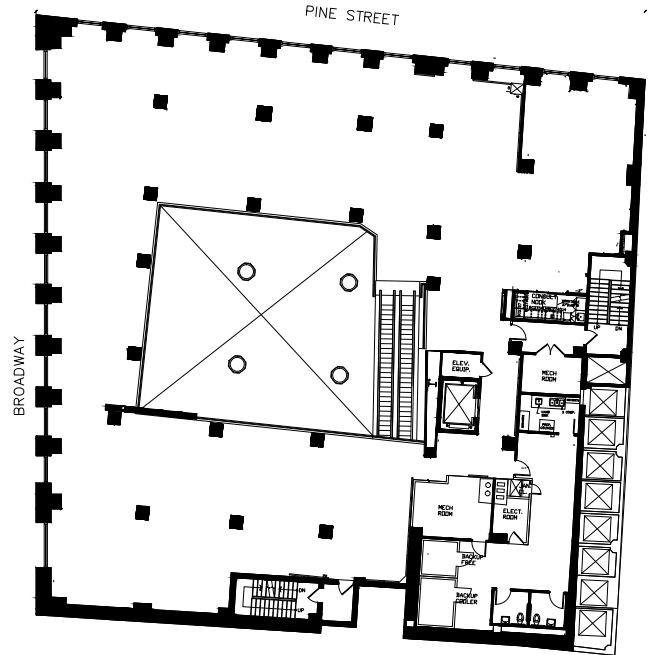
# 100 Broadway

## Floor Plans

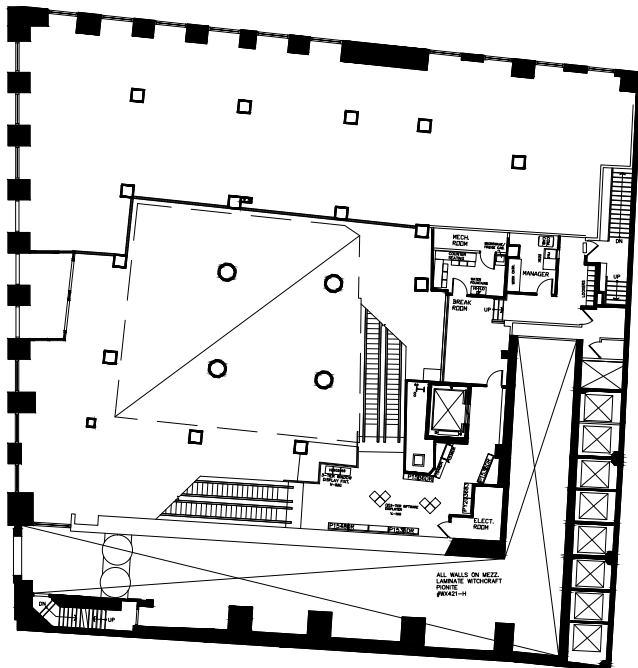
Ground Floor 5,806 sf



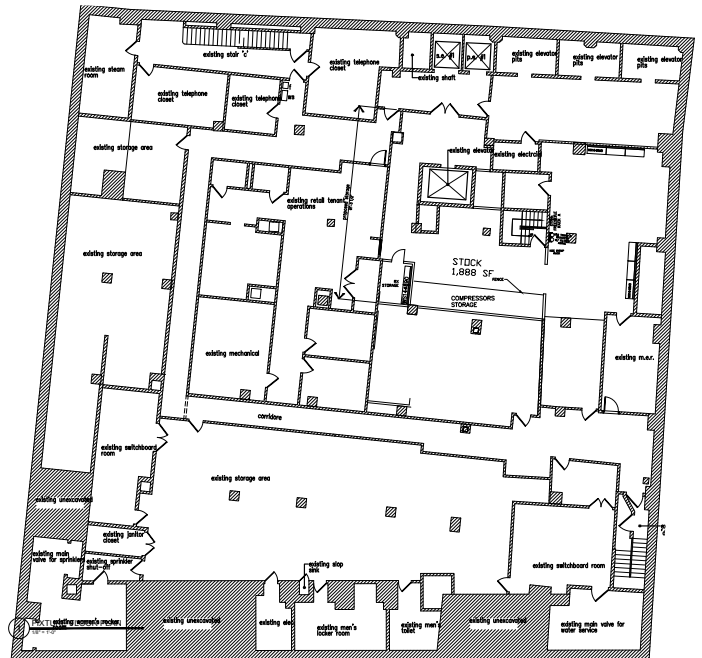
Second Floor 11,214 sf



Mezzanine 1,950 sf

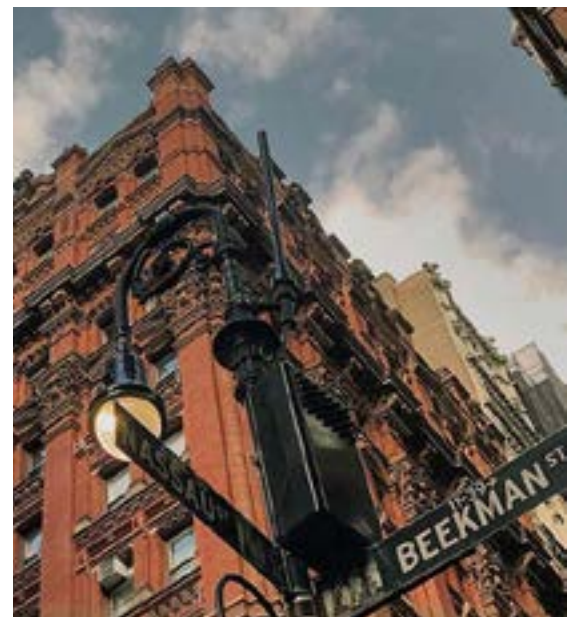


Lower Level 2,297 sf



# 100 Broadway

## Area Photos



Jones Lang LaSalle Brokerage, Inc. | 330 Madison Avenue New York, NY 10017

### DISCLAIMER

Although information has been obtained from sources deemed reliable, neither Owner nor JLL makes any guarantees, warranties or representations, express or implied, as to the completeness or accuracy as to the information contained herein. Any projections, opinions, assumptions or estimates used are for example only. There may be differences between projected and actual results, and those differences may be material. The Property may be withdrawn without notice. Neither Owner nor JLL accepts any liability for any loss or damage suffered by any party resulting from reliance on this information. If the recipient of this information has signed a confidentiality agreement regarding this matter, this information is subject to the terms of that agreement. ©2022 Jones Lang LaSalle IP, Inc. All rights reserved.