



Jones Lang LaSalle Brokerage, Inc., Real estate license #01856260

# Brunswick Square

360 E 2<sup>nd</sup> Street  
Los Angeles, CA 90012

**5,814 RSF available  
For Sublease**







**Premises:** 5,814 RSF available now on the 2<sup>nd</sup> floor

**Term:** Through April 30, 2024

**Rental Rate:** Negotiable

**Furniture:** Negotiable

**Layout:** Four (4) internal private glass-lined offices or meeting rooms, one (1) conference room, full kitchen, reception area, IT room, open recreation/lounge area, and open bullpen with space for thirty (30) workstations

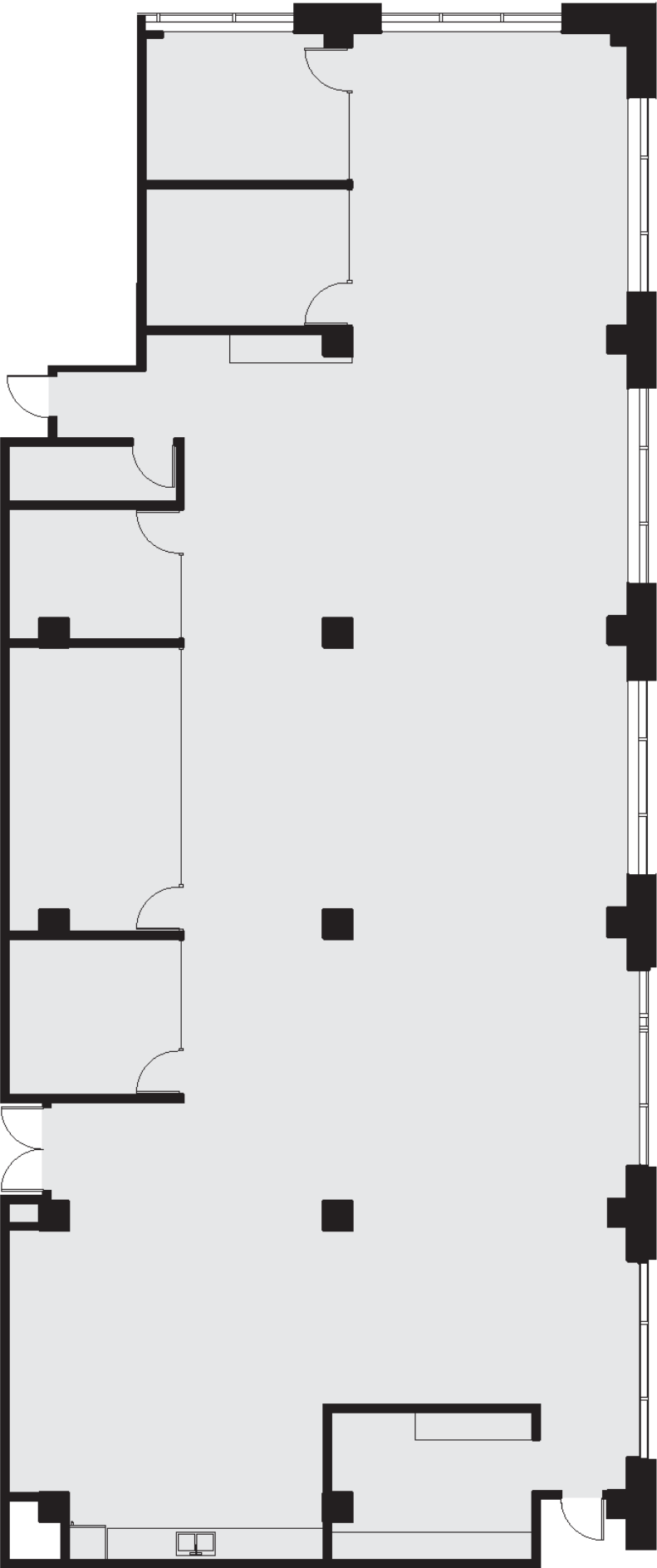


### Space Highlights

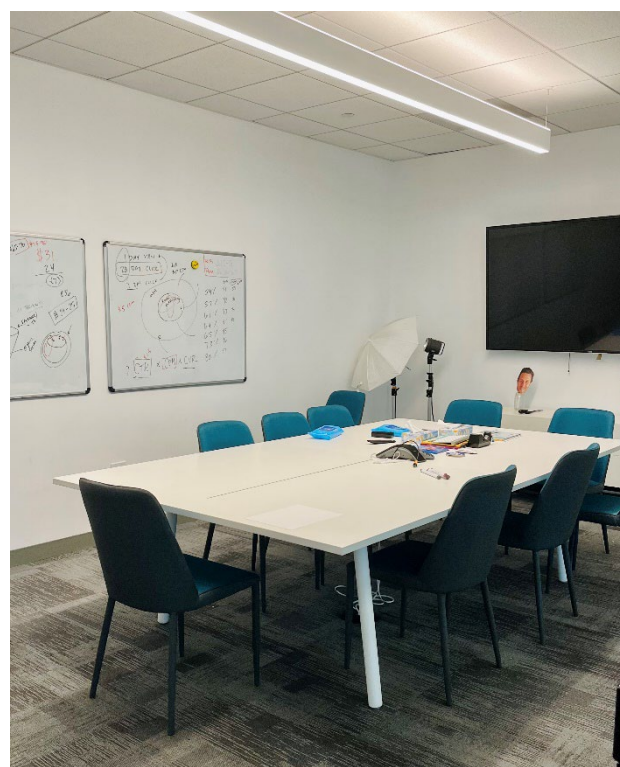
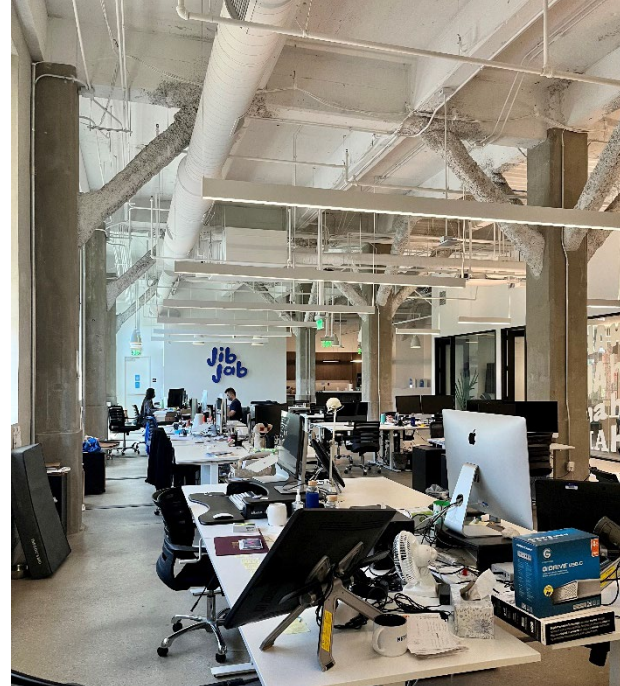
- > Suite offers immediate access to common area courtyard and tenant lounge
- > Creative office with polished concrete floors, exposed ceilings, double-door entry, and elevator identity
- > 12 parking permits
- > Additional parking available month-to-month

Suite 200 floor plan

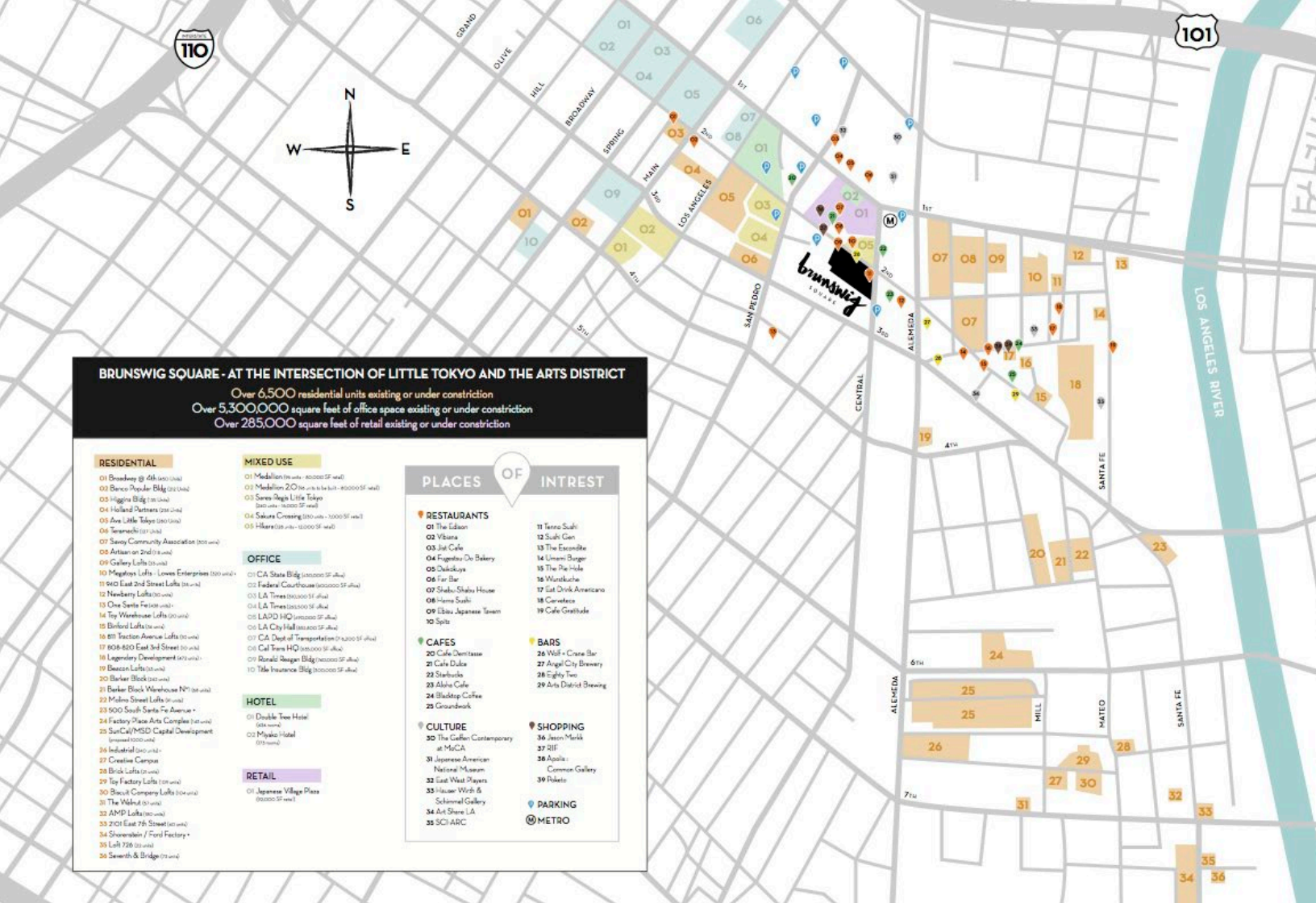
5,814 RSF











- > Destination restaurants, bars and shops all within walking distance
- > Wolf & Crane located on ground floor of the building

**Blake Searles**  
 Senior Managing Director  
 CA Lic #01514932  
 T +1 949 981 5658  
[blake.searles@am.jll.com](mailto:blake.searles@am.jll.com)

**Ali De Oca**  
 Vice President  
 CA Lic #01991465  
 T +1 310 595 3612  
[ali.deoca@am.jll.com](mailto:ali.deoca@am.jll.com)

**Caitlyn Ross**  
 Vice President  
 CA Lic #01892435  
 T +1 213 239 6339  
[caitlyn.ross@am.jll.com](mailto:caitlyn.ross@am.jll.com)



Although information has been obtained from sources deemed reliable, neither Owner nor JLL makes any guarantees, warranties or representations, express or implied, as to the completeness or accuracy as to the information contained herein. Any projections, opinions, assumptions or estimates used are for example only. There may be differences between projected and actual results, and those differences may be material. The Property may be withdrawn without notice. Neither Owner nor JLL accepts any liability for any loss or damage suffered by any party resulting from reliance on this information. If the recipient of this information has signed a confidentiality agreement regarding this matter, this information is subject to the terms of that agreement. ©2022. Jones Lang LaSalle IP, Inc. All rights reserved.

\*\*The outbreak of the COVID-19 virus (novel coronavirus) since the end of January 2020 has resulted in market uncertainty and volatility. While the economic impact of a contagion disease generally arises from the uncertainty and loss of consumer confidence, its impact on real estate values is unknown at this stage.