

For Sale



Building Highlights

22,343 RSF available

- > Sale Price: \$3,450,000
- > Vacancy: 14,943 s.f. of contiguous space
- > Attractive office and dock-loading
- > Easy access to Route 32, Route 29 and I-95
- > Great window line
- > End-cap of building with excellent parking
- > Landominium
- > 4,688 sf – built out as an amazing conference center/ training center with oversized conference room- training room
- > 10,255 sf- end unit, combination open space and private offices

9115 Guilford Road,
Columbia, MD 21046

Rob Freedman SIOR

Managing Director

+1 443 931 3346

rob.freedman@am.jll.com

Dominic Digiovannantonio

Senior Associate

+1 443 452 1505

dom.digi@am.jll.com

Gary D. Applestein SIOR

Managing Director

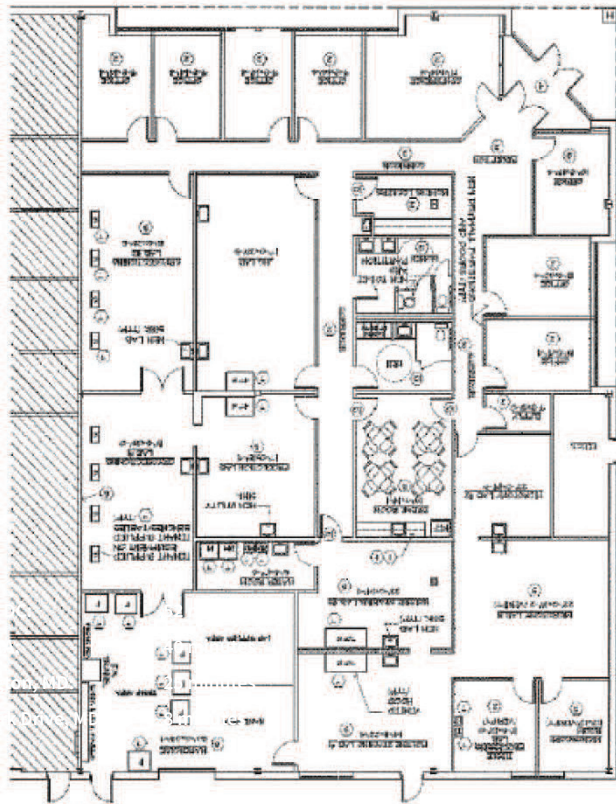
+1 443 931 3345

gary.applestein@am.jll.com

For Sale

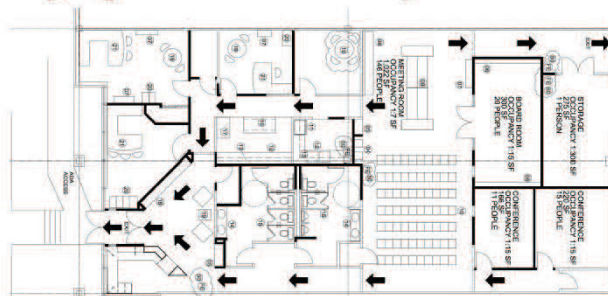


Space Plan



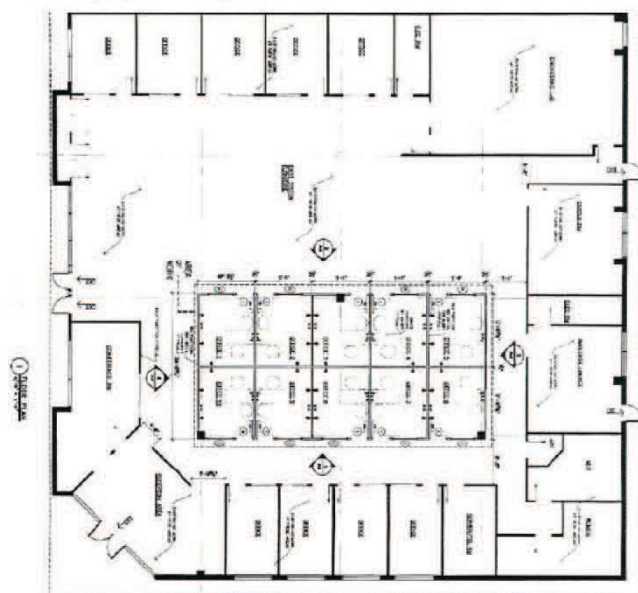
Space A

7,400 sf leased to current tenant



Space B

4688 sf space- the
conference center
training center



Space C

10,255 sf end cap