



For Lease

Premier office space available
330 OLD COUNTRY ROAD, MINEOLA, NY

Availabilities

Partial 2nd floor 8,061 – 10,764 SF divisible

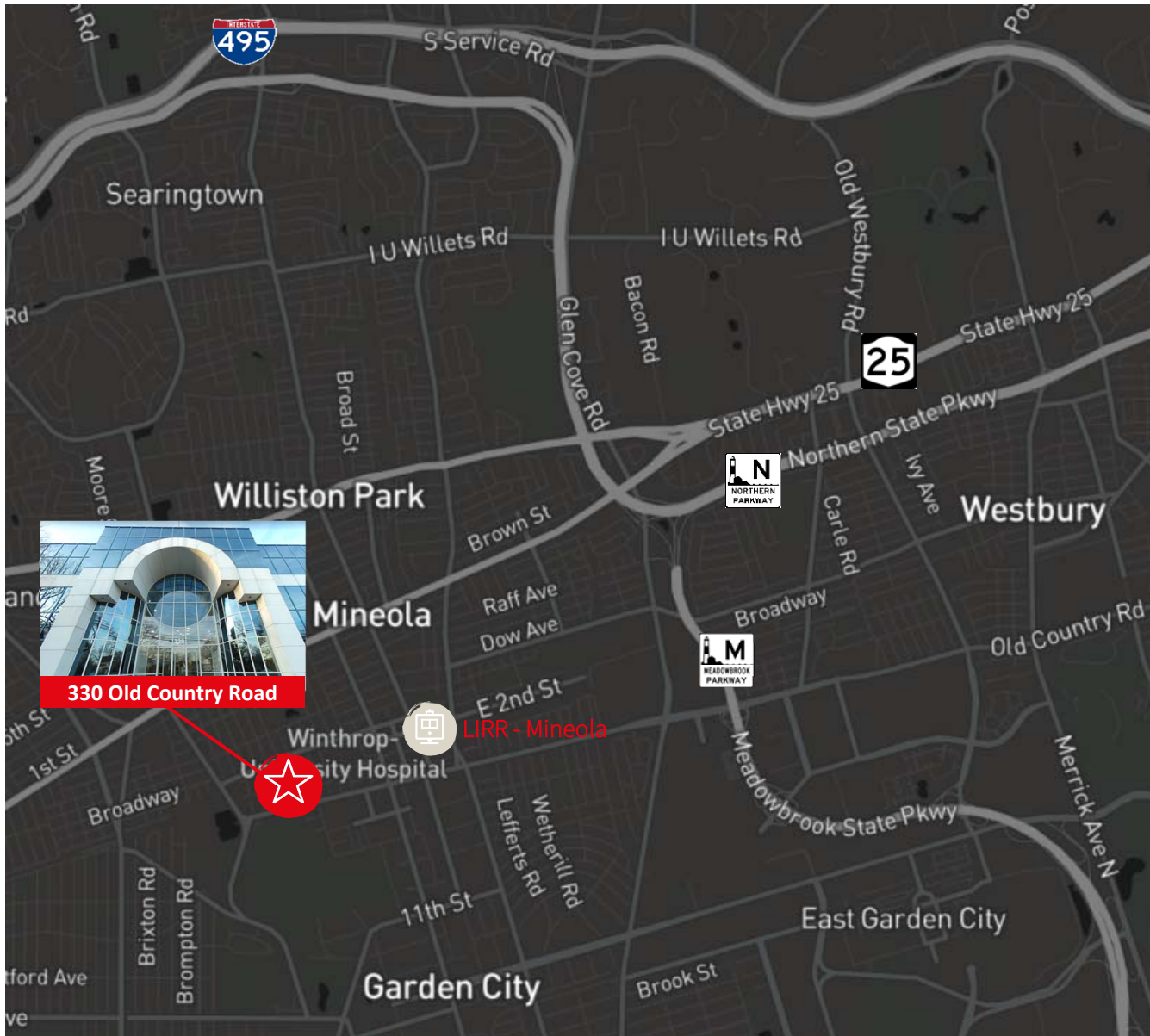
Partial 3rd floor 16,814 SF divisible

Rental rate:

\$28.00 PSF plus utilities

Building highlights:

- High window to floor ratio
- Three lower levels of covered parking, serviced by two elevators
- Easy access to Meadowbrook Parkway, Northern State Parkway, Jericho Turnpike and the LIRR – Mineola station
- Close proximity to downtown Garden City restaurants and shopping
- 24-hour access
- Conferencing facility
- Atrium
- Property Manager on-site
- Banking
- Restaurant



David C. Leviton

Managing Director

+1 631 962 2904

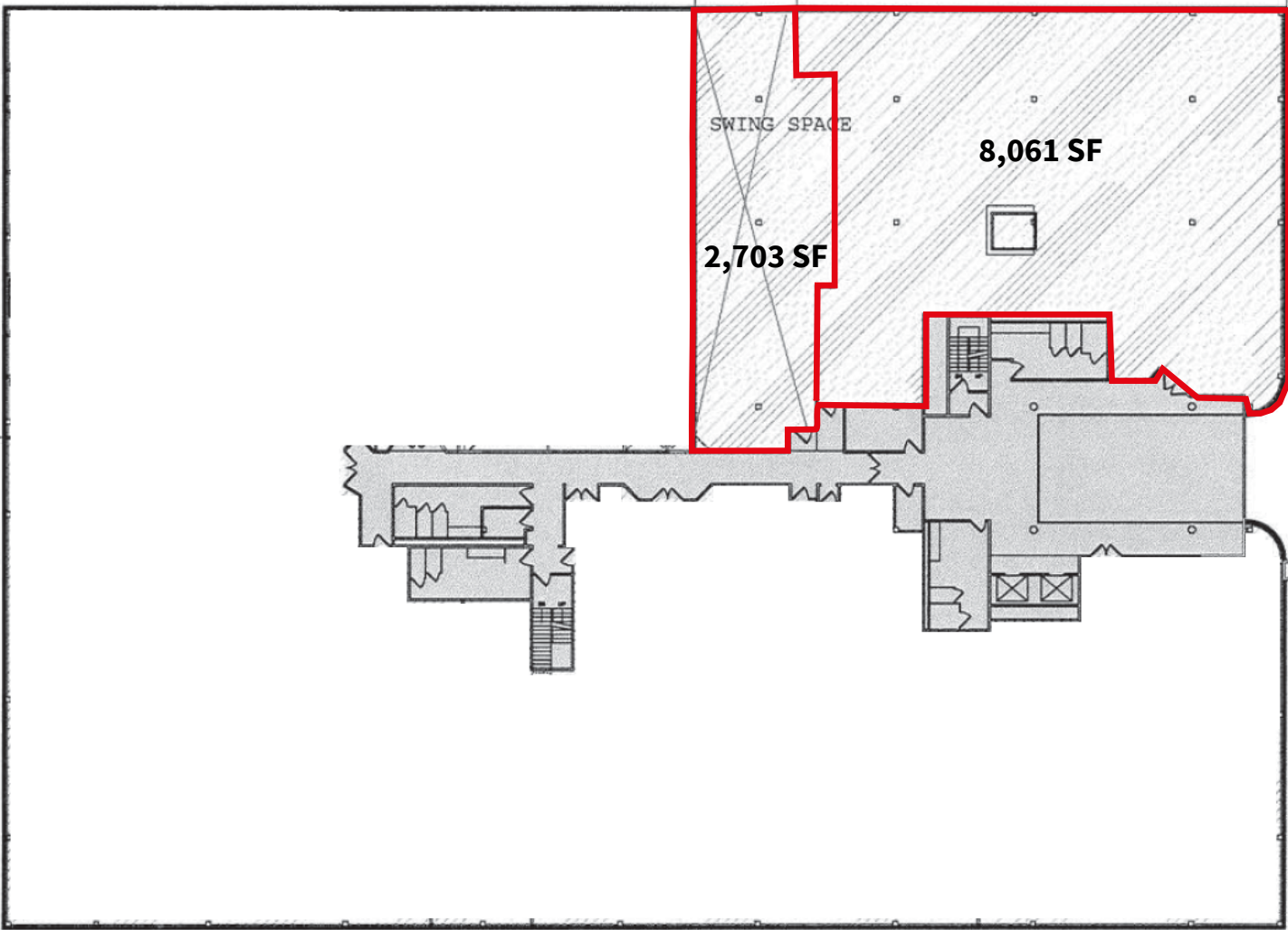
david.leviton@am.jll.com

www.jll.com/long-island



Floor plan: 10,764 SF on the 2nd floor (divisible)

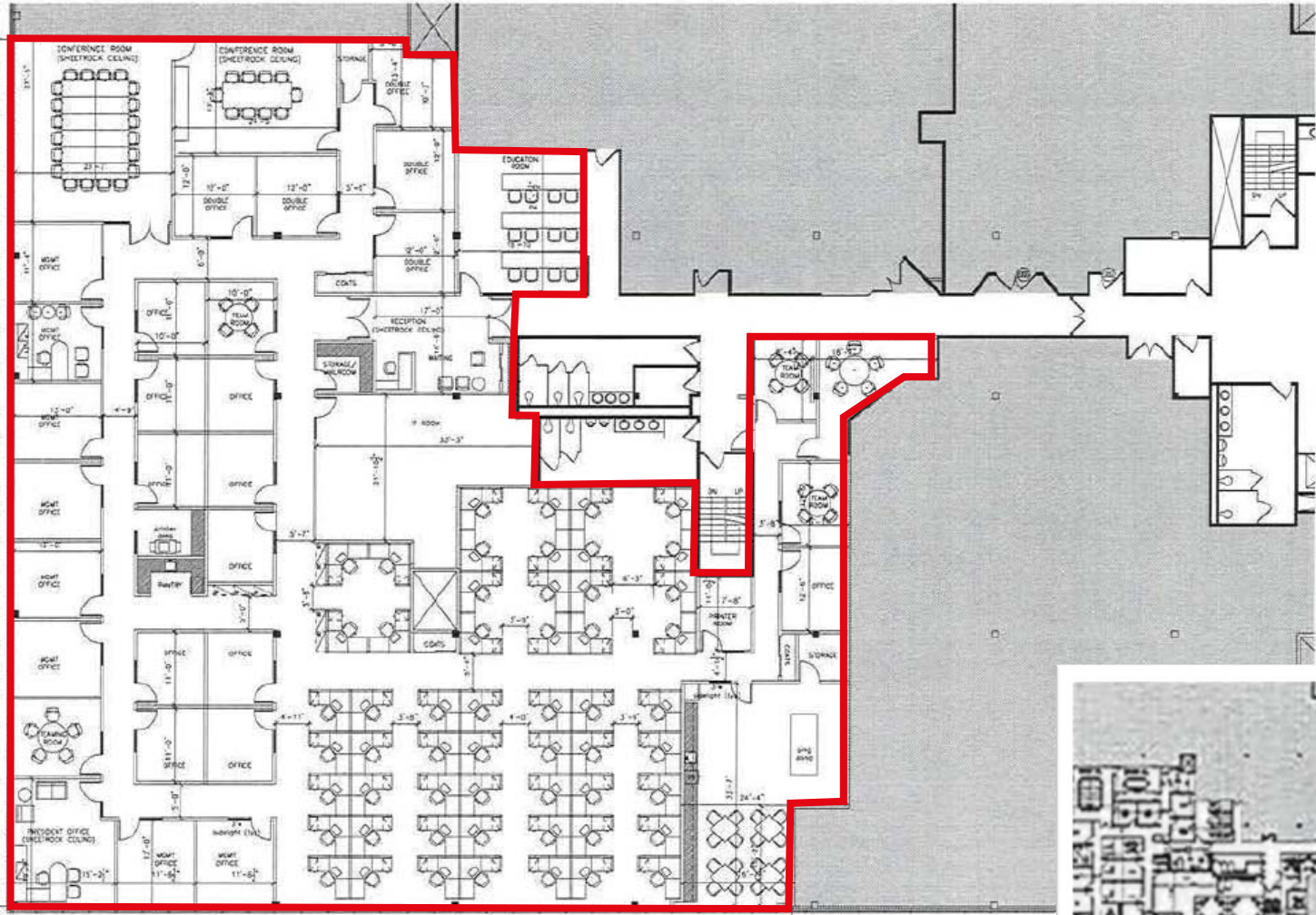
Suite 201 and 207



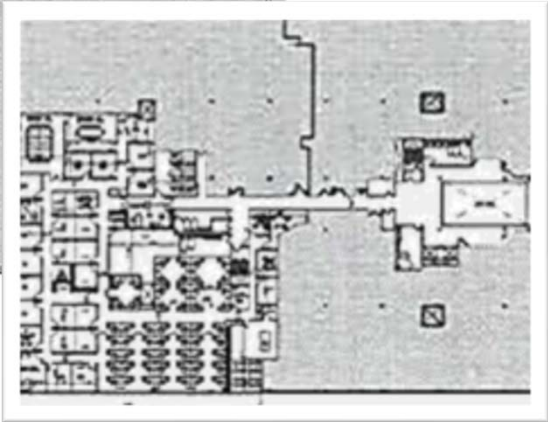
Old Country Road

Floor plan: 16, 814 SF on the 3rd floor (divisible)

Suite 303



Old Country Road



key plan