



For Lease

Grace Lofts

1324 Washington Ave. | St. Louis, MO 63103

Jones Lang LaSalle Americas, Inc., a licensed real estate broker in 48 states





Availability

- **±7,500 RSF** creative office space
- Full second floor at historic Washington Avenue loft building
- 12 private offices
- Open work area
- Break room
- Conference room
- Grace Lofts is on the National Register of Historic Places for its significance in architecture & engineering
- Close proximity to many area attractions including Lucas Park, City Museum, Enterprise Center, Stifel Theatre, Union Station, and the new MLS stadium
- **Rate:** \$16.00/SF plus electric



Area amenities



Restaurants



Hotels

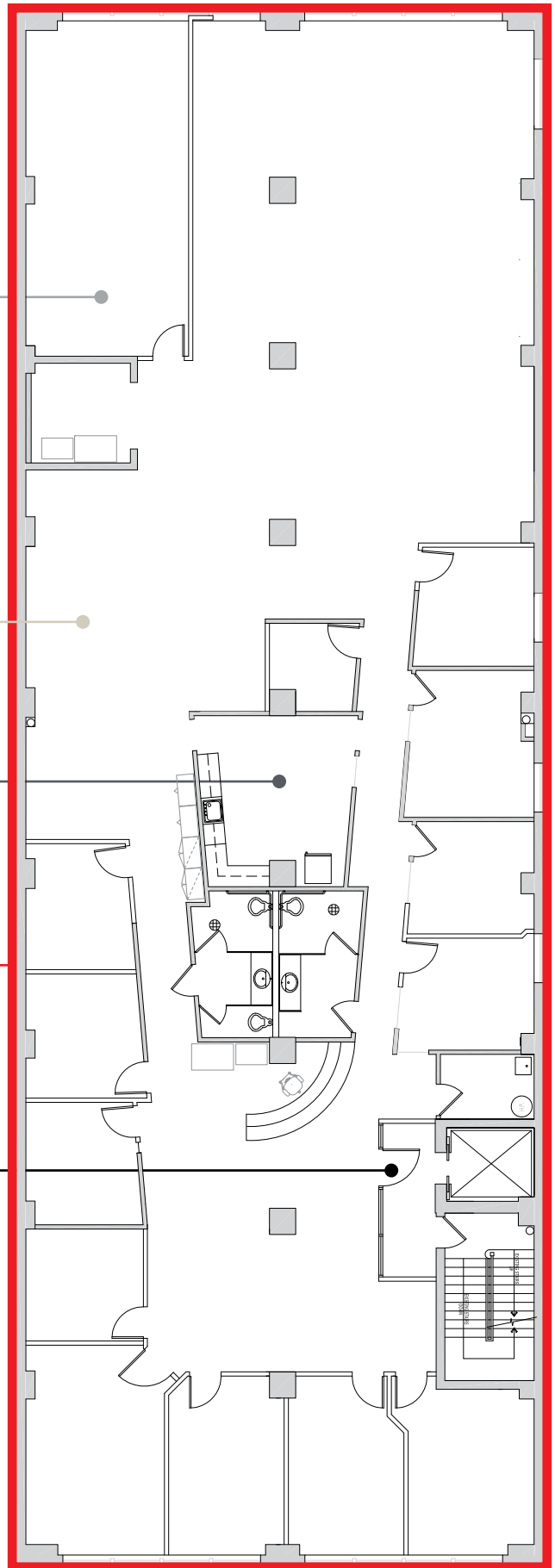
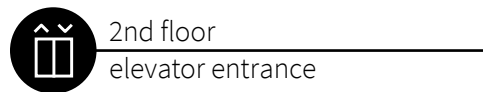
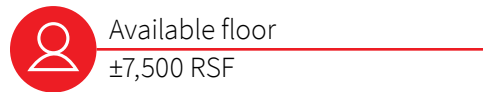


Attractions

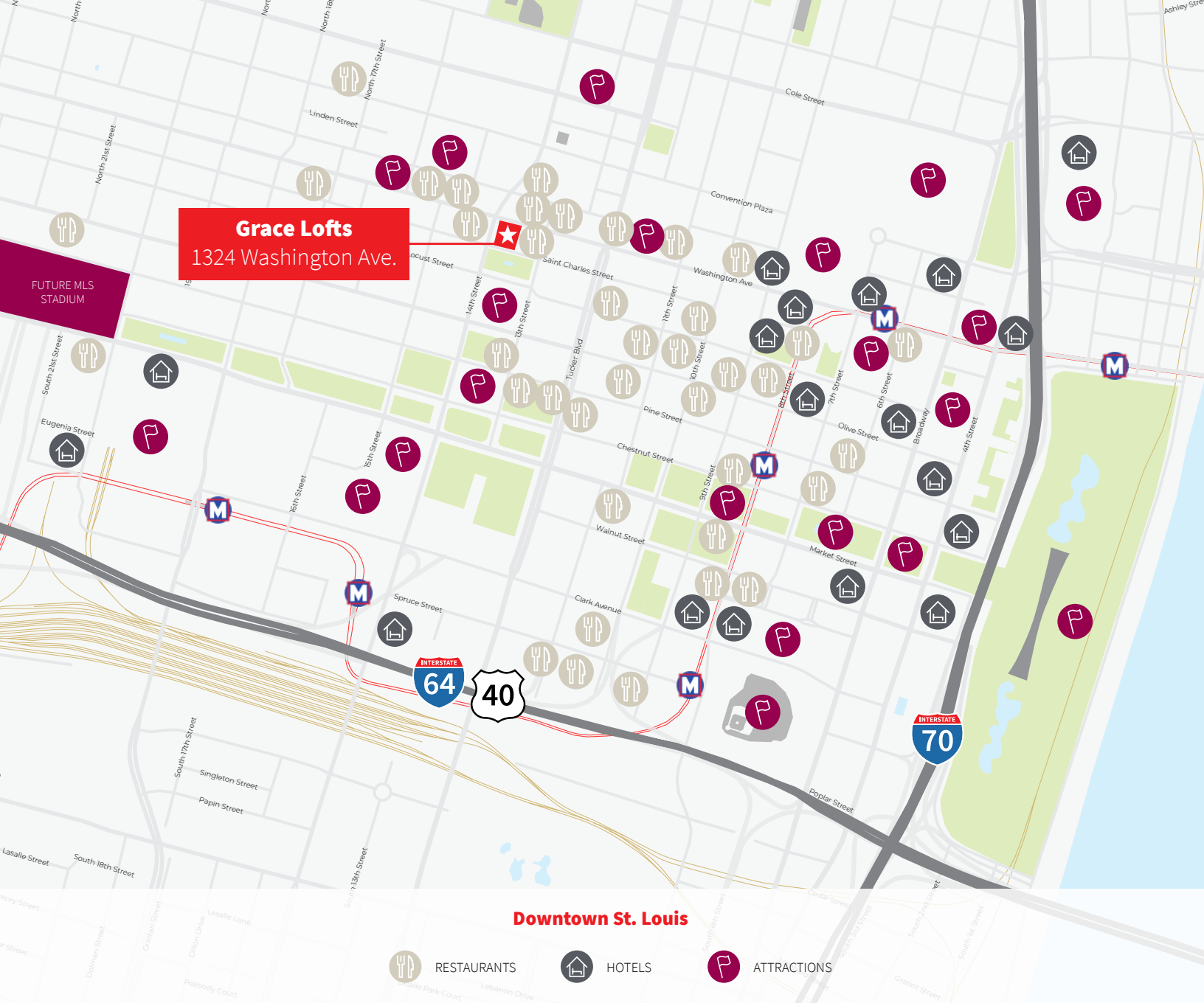


Floor plan

±7,500 RSF full floor
creative office available



1324 Washington Ave.
St. Louis, MO 63103



Contact

Stephen Lordo

+1 314 338 2089

stephen.lordo@am.jll.com

+1 314 338 2080 | jll.com/st-louis

Jones Lang LaSalle Americas, Inc., a licensed real estate broker in 48 states | DISCLAIMER Although information has been obtained from sources deemed reliable, neither Owner nor JLL makes any guarantees, warranties or representations, express or implied, as to the completeness or accuracy as to the information contained herein. Any projections, opinions, assumptions or estimates used are for example only. There may be differences between projected and actual results, and those differences may be material. The Property may be withdrawn without notice. Neither Owner nor JLL accepts any liability for any loss or damage suffered by any party resulting from reliance on this information. If the recipient of this information has signed a confidentiality agreement regarding this matter, this information is subject to the terms of that agreement. ©2021. Jones Lang LaSalle IP, Inc. All rights reserved.

