

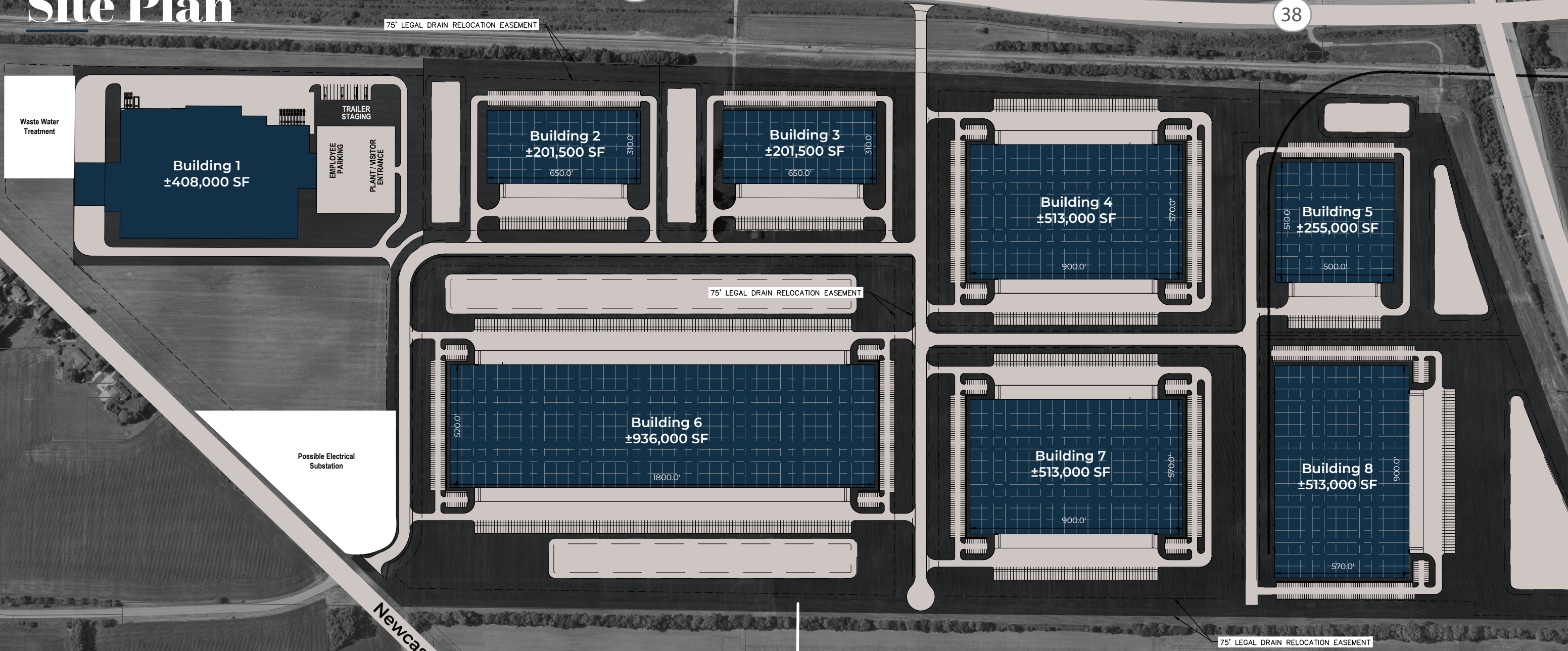


Newcastle Road, Lafayette, IN 47905





# Site Plan







**P** **PARK65**  
LAFAYETTE





# Lafayette

**P** **PARK65**  
LAFAYETTE

				
	Jobs 2021	Resident Workers	Avg. Hourly Wages	Avg. Annual Earnings
Transportation, Storage, and Distribution Managers	46	48	\$44.25	\$92,047
First-Line Supervisors of Transportation and Material Moving Workers	340	314	\$26.89	\$55,925
First-Line Supervisors of Production and Operating Workers	707	617	\$34.51	\$71,779
Heavy and Tractor-Trailer Truck Drivers	1,203	1,135	\$24.08	\$50,087
Light Truck Drivers	683	555	\$18.74	\$38,986
Packaging and Filling Machine Operators and Tenders	144	193	\$19.83	\$41,246
Laborers and Freight, Stock, and Material Movers, Hand	1,357	1,651	\$15.84	\$32,952
Shipping, Receiving, and Inventory Clerks	527	520	\$19.45	\$40,454
Stockers and Order Fillers	1,657	1,404	\$18.21	\$37,868
Packers and Packagers, Hand	215	301	\$15.68	\$32,610

**30 Minute Drive Time**

**2022 Occupation:  
Transportation/Moving By ZIP**

- 0 - 335
- 335 - 918
- 918 - 1,774
- 1,774 - 3,795

**PARK65 LAFAYETTE**



# Aerial Lafayette

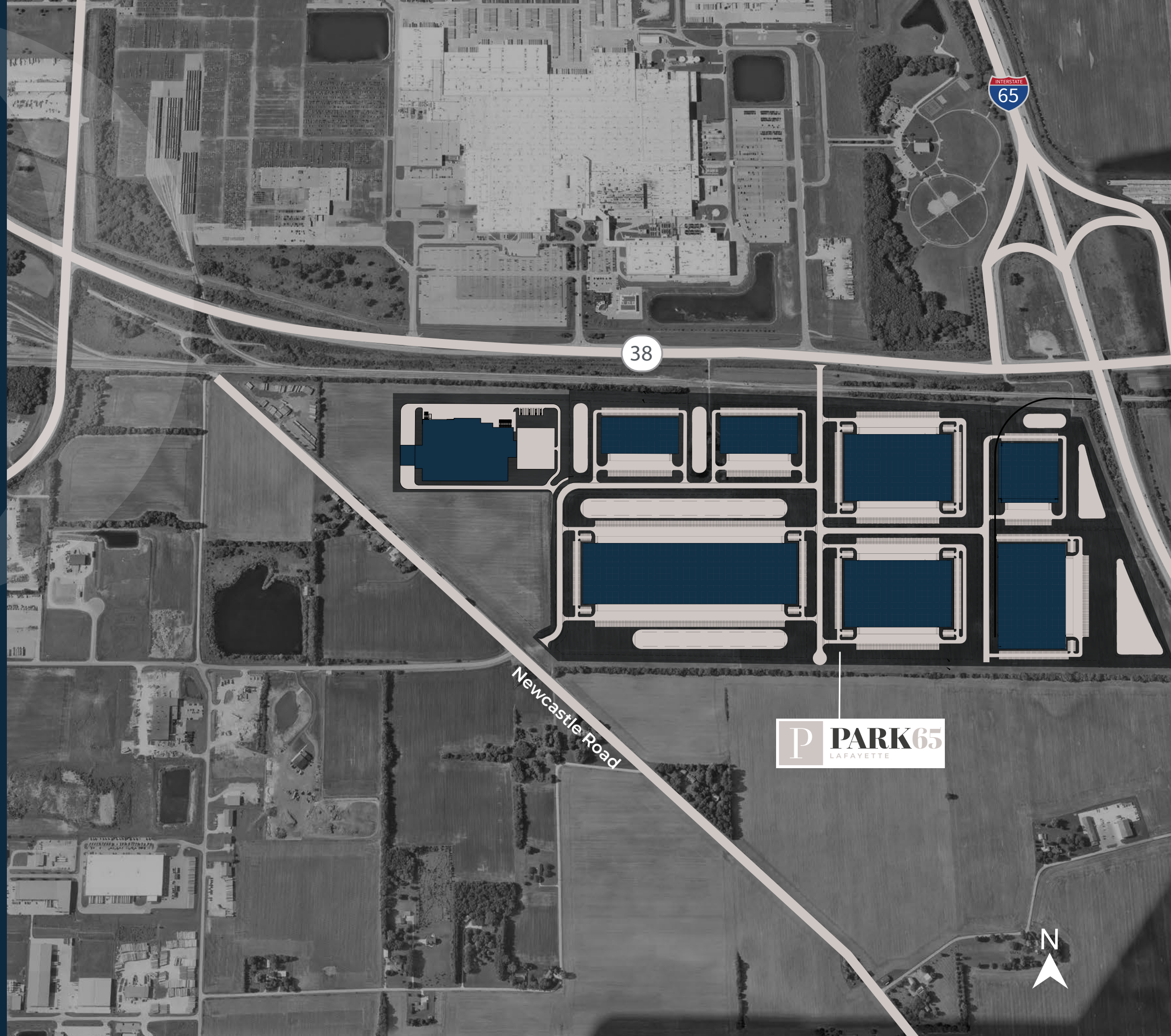
## Drive Times

I-65  
±1 mile

Downtown Indianapolis  
±57 miles

Indianapolis International Airport  
± 61 miles

Chicago, IL  
±127 miles



**P** **PARK 65**  
LAFAYETTE





Newcastle Road, Lafayette, IN 47905



**Abigail Sievers**

+1 317.810.6410

abigail.sievers@jll.com

**Brian Buschuk**

+1 317.810.7180

brian.buschuk@jll.com

Although information has been obtained from sources deemed reliable, neither Owner nor JLL makes any guarantees, warranties or representations, express or implied, as to the completeness or accuracy as to the information contained herein. Any projections, opinions, assumptions or estimates used are for example only. There may be differences between projected and actual results, and those differences may be material. The Property may be withdrawn without notice. Neither Owner nor JLL accepts any liability for any loss or damage suffered by any party resulting from reliance on this information. If the recipient of this information has signed a confidentiality agreement regarding this matter, this information is subject to the terms of that agreement. ©2022. Jones Lang LaSalle IP, Inc. All rights reserved.