



# *Fitzgibbons Glass*



**AVAILABLE FOR LEASE**

**18,400 RSF of creative office space**

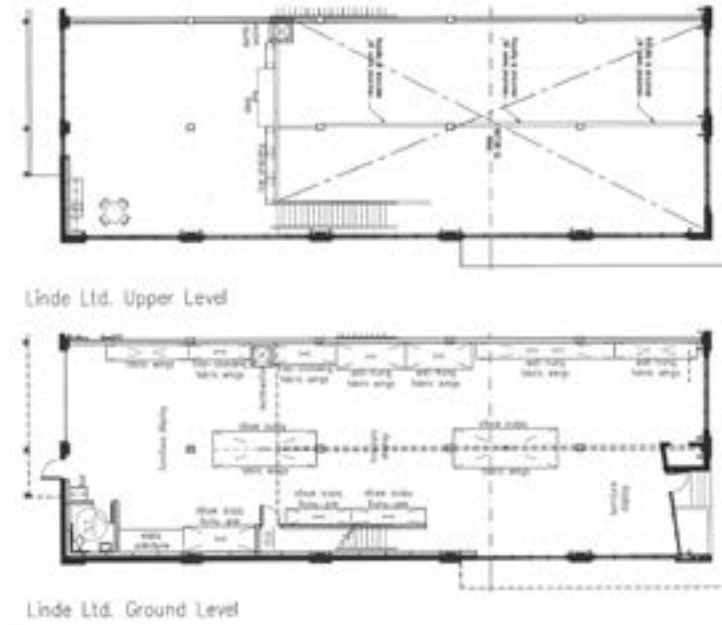
**2001 NW 19th Avenue  
Portland, OR 97209**

Annalore Rodman  
Licensed in OR  
+1 503 546 3671  
[annalore.rodman@am.jll.com](mailto:annalore.rodman@am.jll.com)

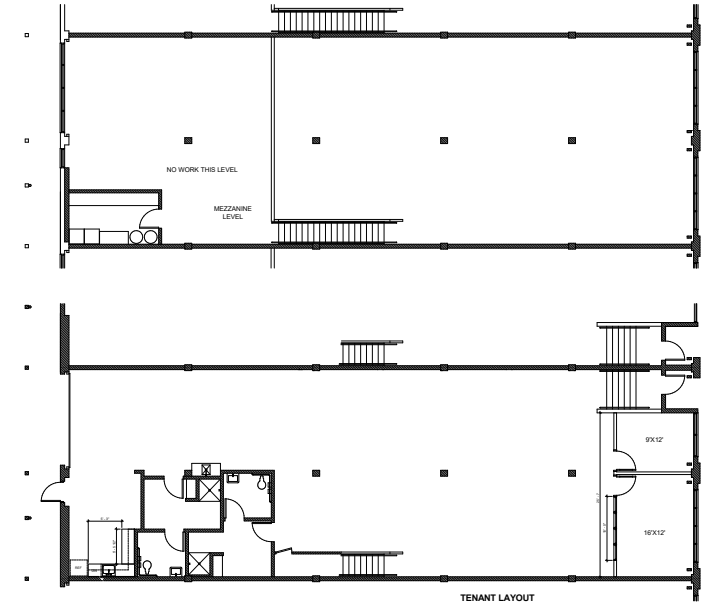
# Building highlights & floorplans



**Suite 100\***  
4,553 RSF Available










**Suite 101\***  
4,569 RSF Available



*\*8,400 contiguous SF available*



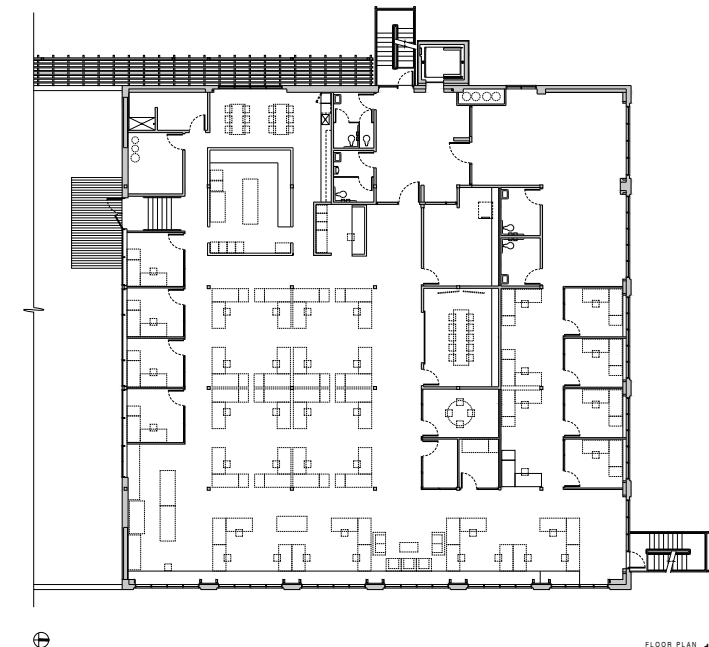
## Features and highlights

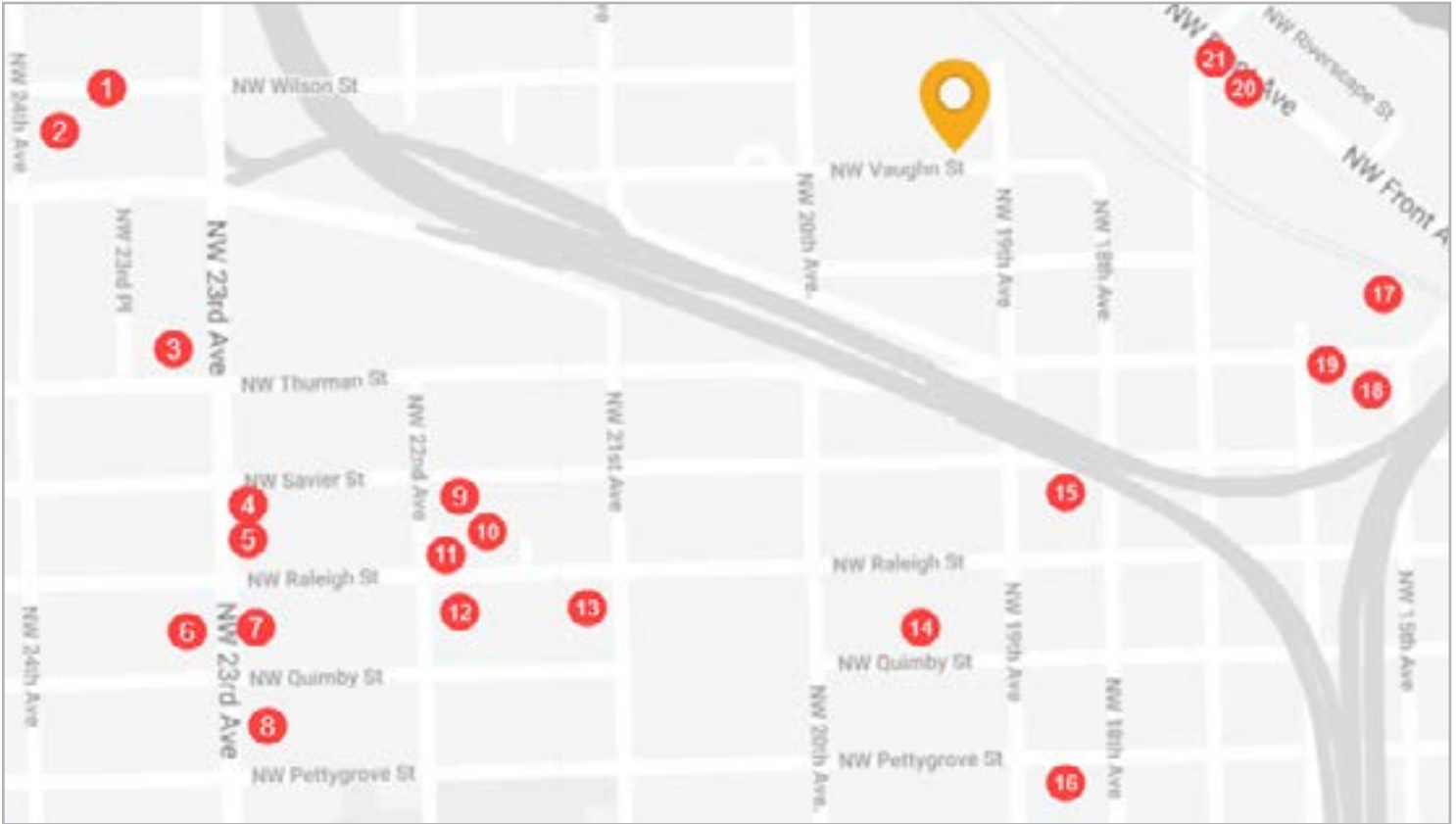
-  Mix of open space, private offices and conference rooms, as well as a kitchen and break area
-  Onsite parking ( 2 / 1,000 SF)
-  Signage available
-  Private deck in Suite 200
-  Seismic update complete in 2008
-  Employee bike storage/parking and shower facility
-  Easy, convenient access to downtown Portland, I-405, I-5, as well as Slabtown and the Pearl



**Suite 200**  
10,000 RSF Available

– Divisible to 2,000 RSF





## Amenities

Extensive nearby options for dining, errands, recreation, lodging, and more

- |                                  |                                |                                     |
|----------------------------------|--------------------------------|-------------------------------------|
| <b>1</b> Hammer & Stitch Brewing | <b>8</b> CorePower Yoga        | <b>15</b> Wells Fargo               |
| <b>2</b> Holiday Day Inn Suites  | <b>9</b> New Seasons Market    | <b>16</b> Justa Pasta               |
| <b>3</b> St. Honore Bakery       | <b>10</b> Good Coffee          | <b>17</b> Emerald Line Cafe         |
| <b>4</b> ZoomCare                | <b>11</b> Orangetheory Fitness | <b>18</b> Mio Sushi Market          |
| <b>5</b> St. Jack                | <b>12</b> Breakside Brewery    | <b>19</b> Stella's Kitchen          |
| <b>6</b> The Whole Bowl          | <b>13</b> Besaw's              | <b>20</b> Children's Garden Daycare |
| <b>7</b> Grassa                  | <b>14</b> Lucky Lab Beer Hall  | <b>21</b> Dockside Saloon           |



For more information, contact:

Annalore Rodman  
 Licensed in OR  
 +1 503 546 3671  
 annalore.rodman@am.jll.com