

THE BELLEVUE

200 S. BROAD ST.
PHILADELPHIA, PA



PROMINENT SECOND GENERATION
RESTAURANT OPPORTUNITY

5,767 SF

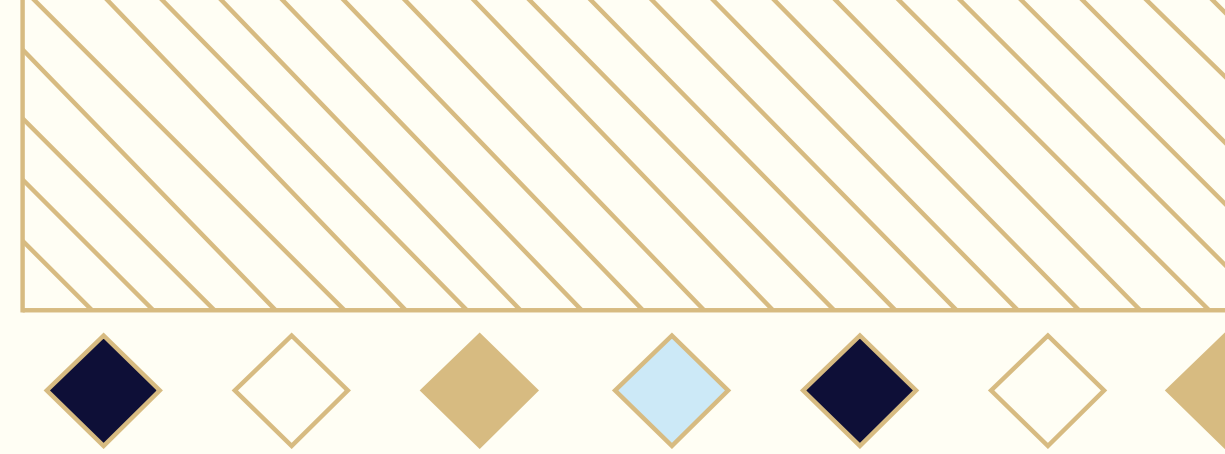
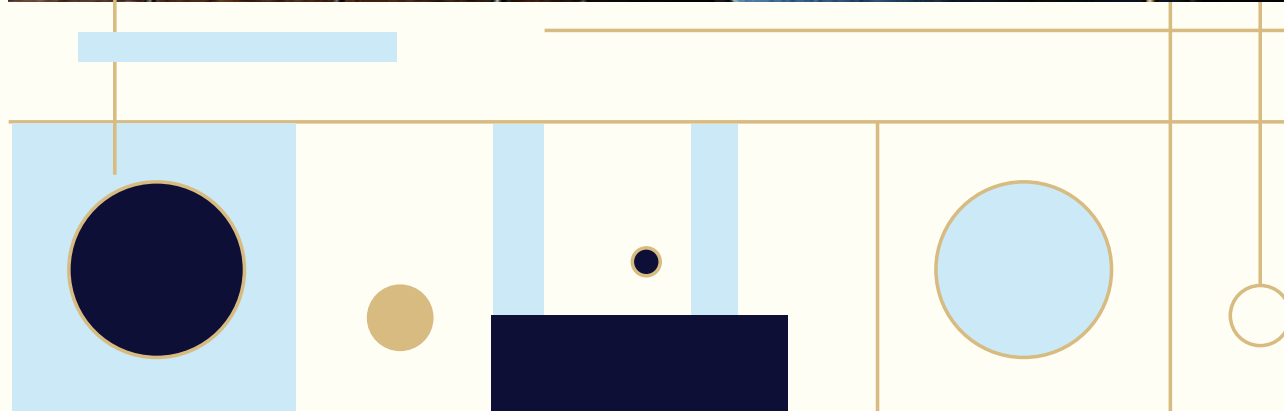
NIGHTINGALE
PROPERTIES

RIR

JLL

PROPERTY OVERVIEW:

The Bellevue, long a Philadelphia mainstay, is poised for a major revitalization that will deepen its roots as a prime destination for shopping, dining, and lifestyle. In addition to a sophisticated hotel, upscale office space, a premier fitness and wellness facility and luxury retail, a vision for a new landscape of restaurant offerings will play a major role in this project.



Ideally located at Broad & Walnut Streets, nestled between Midtown Village's famed restaurant row on 13th Street and Rittenhouse Square, both known culinary hotspots

Convenient access with an on-site parking garage and adjacent to SEPTA's Broad Street Line subway station



SPACE FEATURES:

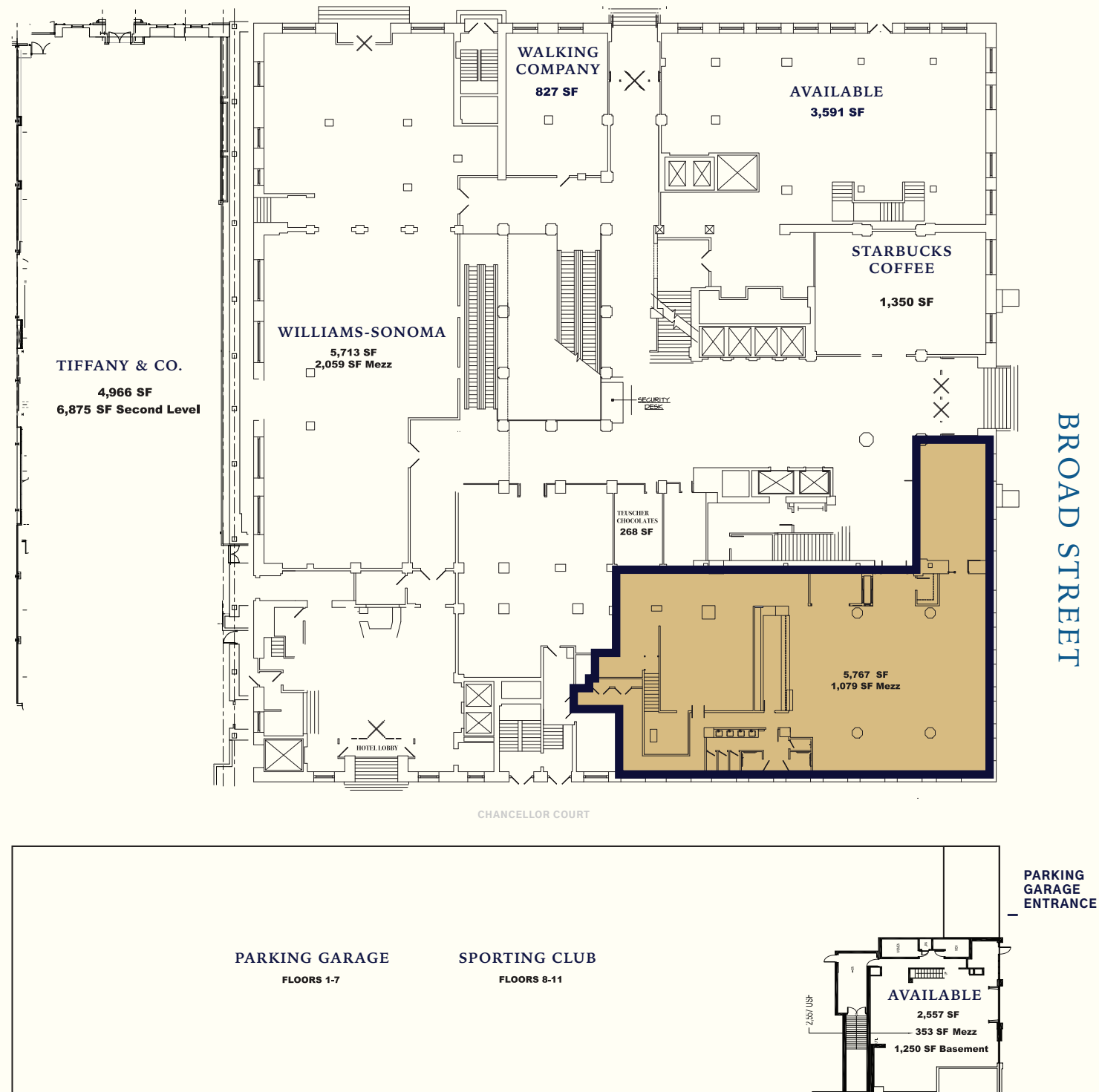
- Positioned along Broad Street, Philadelphia's famed "Avenue of the Arts," this opportunity offers unmatched visibility where over 100,000 people walk, bike, drive, shop, and commute every day
- Fully Built-Out Restaurant; recently renovated, including all FF&E
- Ornate exterior with ample frontage, spanning over 77' along Broad Street
- Interior access to main lobby of The Bellevue
- Adjacent to parking garage with opportunity for valet parking
- Liquor License Available



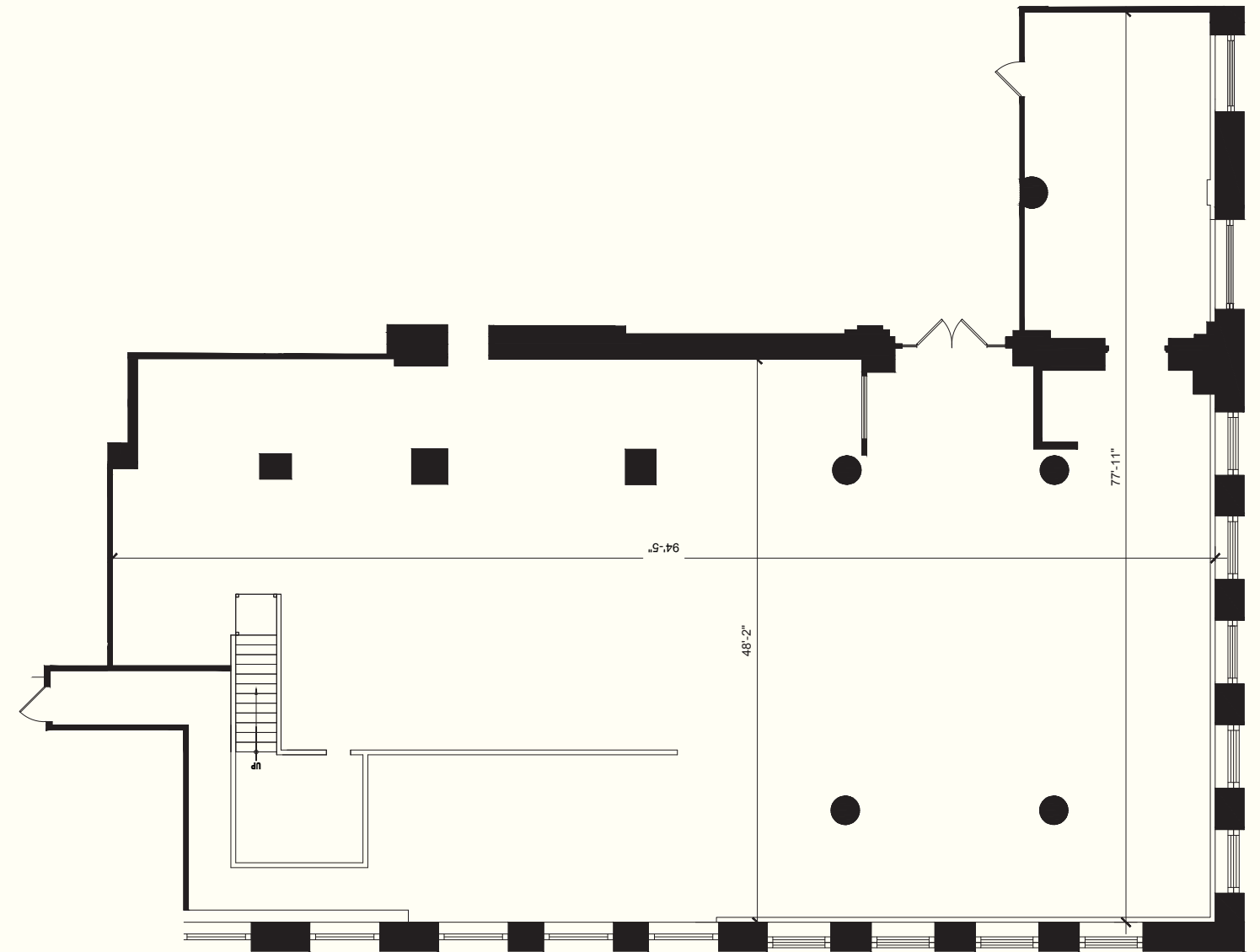
SITE PLAN

FLOOR PLAN

WALNUT STREET



BROAD STREET

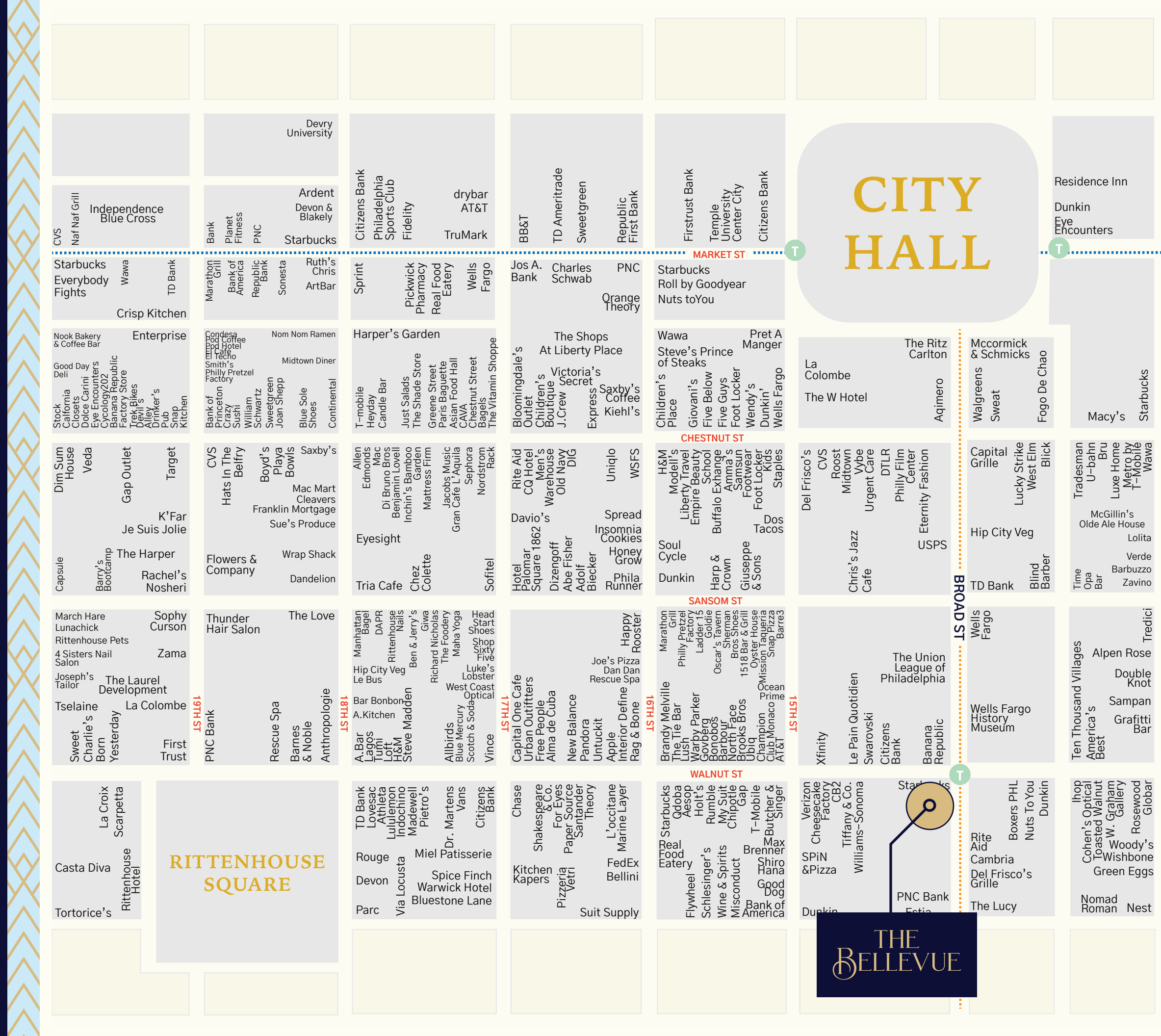


PARKING GARAGE ENTRANCE

Stake Your Claim in Philadelphia's Prime Shopping Corridor

Philadelphia Retail Map

Join these Retail Magnets





THE BELLEVUE

200 S. BROAD STREET ❖ PHILADELPHIA, PA

FOR LEASING INFORMATION

PAIGE JAFFE
Managing Director
+1 215 988 5500
paige.jaffe@am.jll.com

MALLORY SCACCETTI
Senior Vice President
+1 215 988 5500
mallory.scaccetti@am.jll.com

JLL | JONES LANG LASALLE
1650 Arch Street, Suite 2500
Philadelphia, PA 19103
+1 215 988 5500



RIR

© 2020 Jones Lang LaSalle IP, Inc. All rights reserved. All information contained herein is from sources deemed reliable; however, no representation or warranty is made to the accuracy thereof.

