

*Pinnacle*  
21 E Huron



*Fordham*  
25 E Superior

# Fordham & Pinnacle

**Retail Space Available in the Heart of River North**



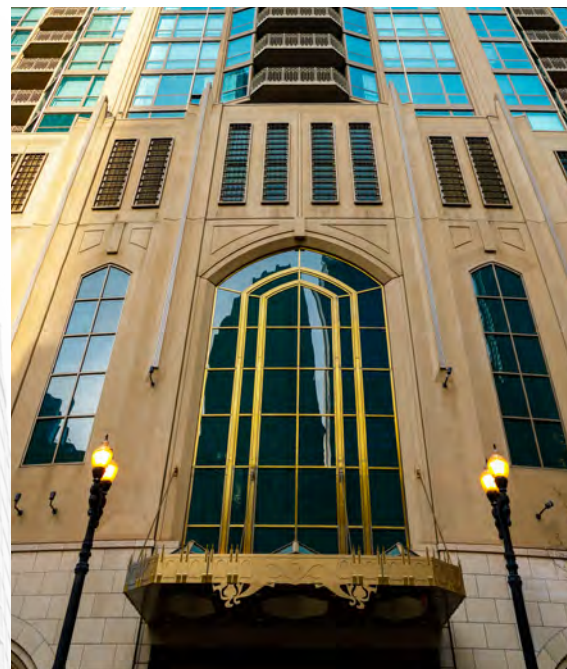


# Pinnacle

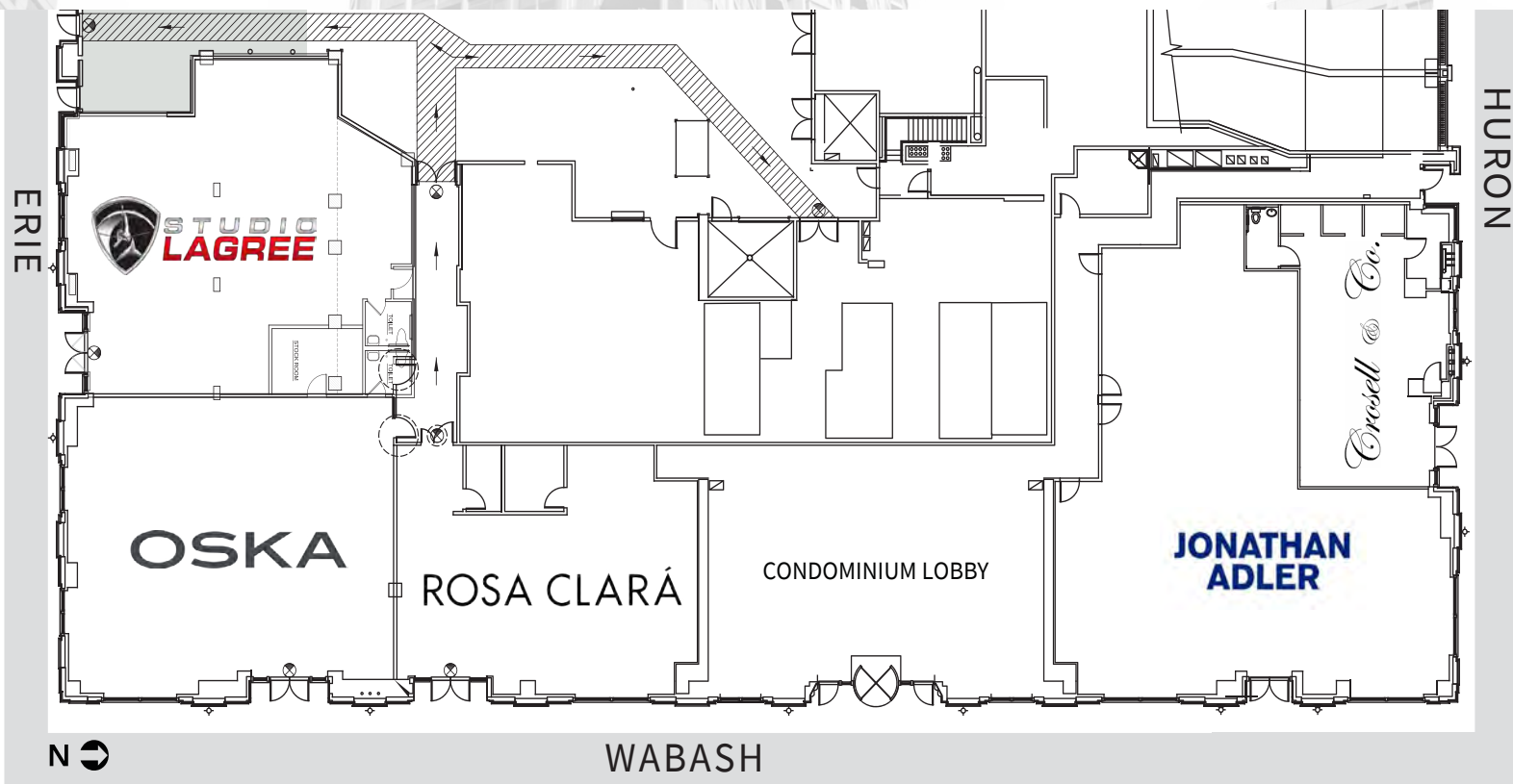
48 Stories | 213 units

- Join Jonathan Adler, Oska, Studio Lagree, and Crosell & Co.
- Prominent retail space available at both The Fordham and The Pinnacle, neighboring luxury residential towers in River North
- Surrounded by high-end fashion and restaurant co-tenancy

**FULLY LEASED**



▶ = Matterport Tour



# Fordham

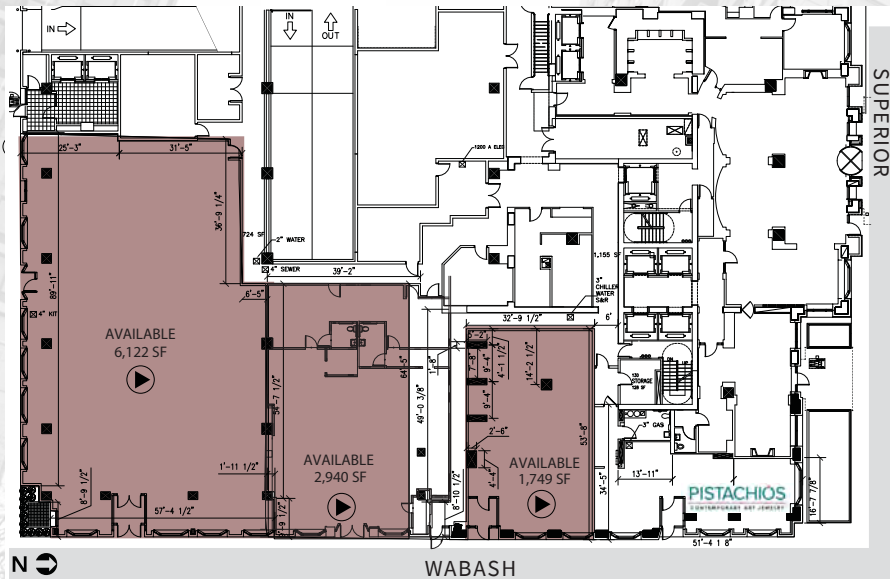
52 Stories | 254 units

**AVAILABILITY: 1,749 - 9,062 SF**

## Option A

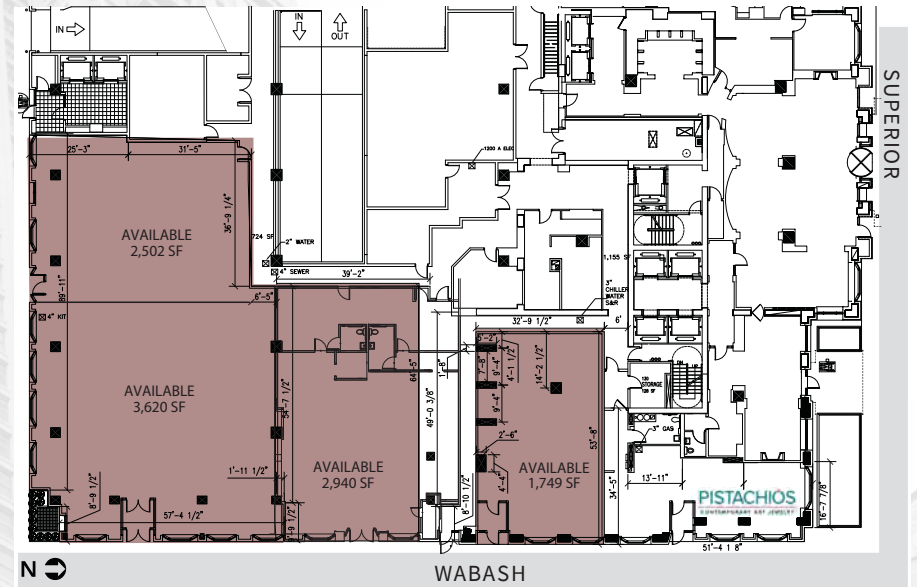
6,122 SF  
2,940 SF  
1,749 SF

▶ = Matterport Tour



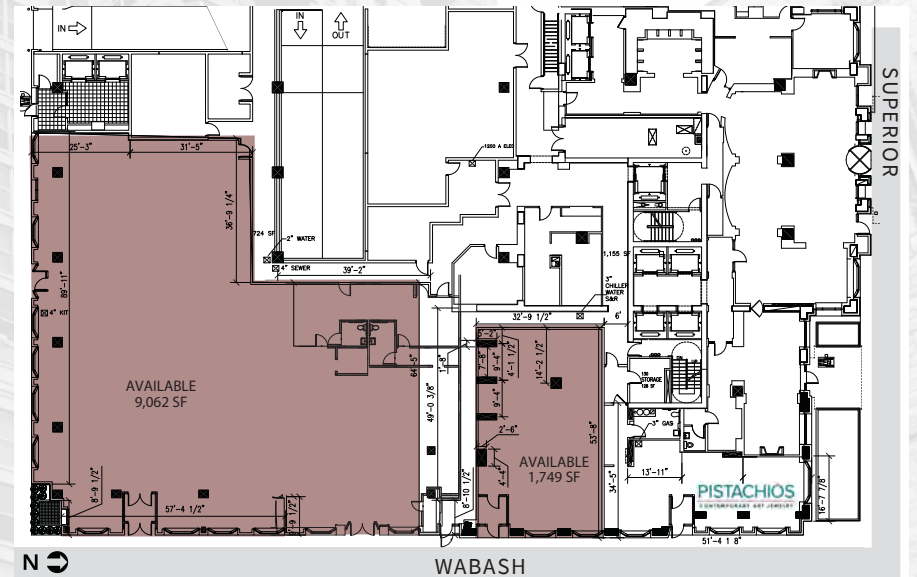
## Option B

3,620 SF 2,502 SF  
2,940 SF 1,749 SF



## Option C

9,062 SF  
1,749 SF





# Demographics

Within 1 Mile of Site



**107,472**  
Residents



**\$179,662**  
Average HH Income



**357,113**  
Employees



**4,600+**  
Hotel Rooms



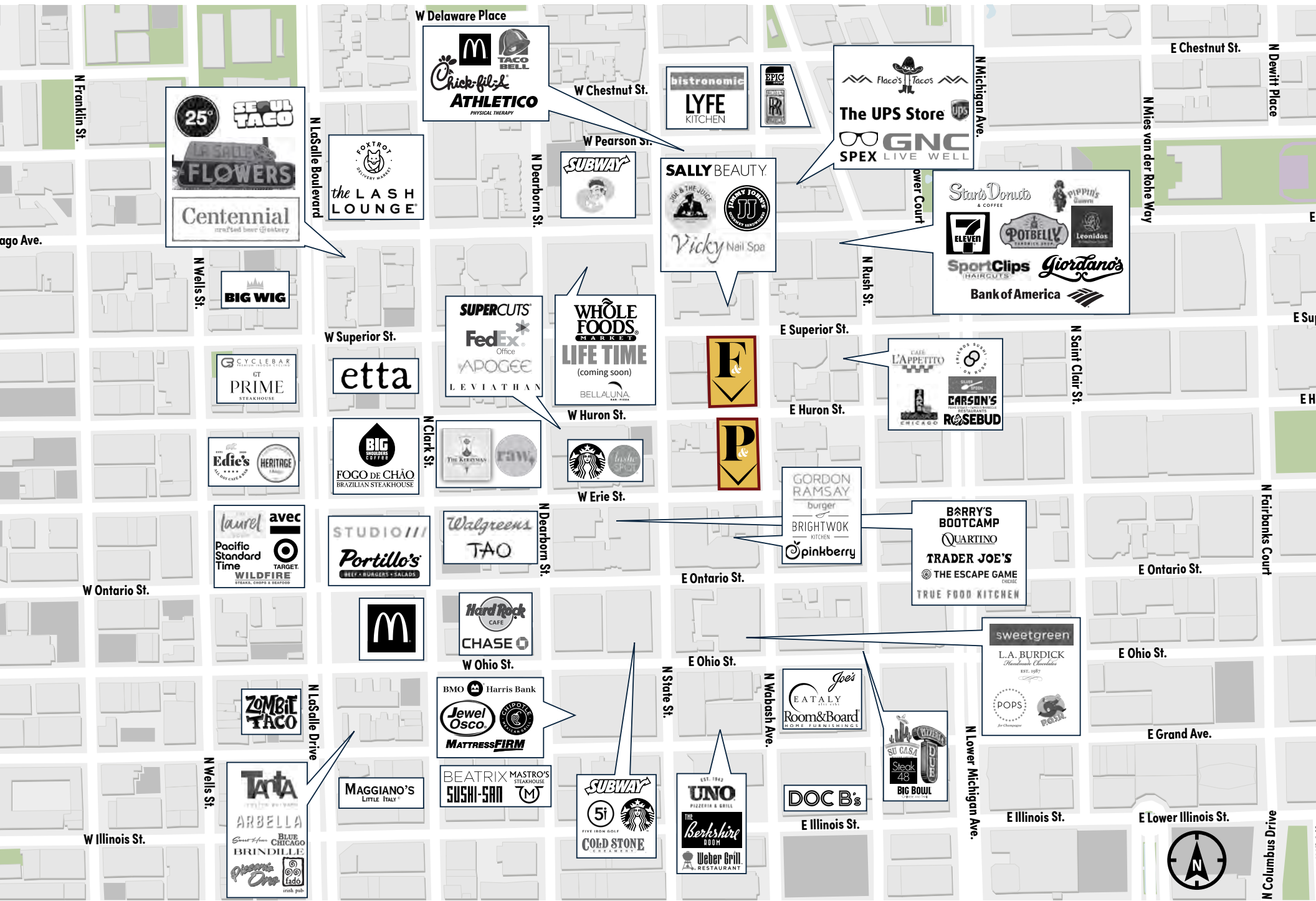
**7,000+**  
Families Attending Holy  
Name Cathedral Weekly



**39,600+**  
Weekly CTA Riders –  
Red Line



# Location





# Contact

## ***PETER CARUSO***

Managing Director

+1 312 228 2926

[peter.caruso@am.jll.com](mailto:peter.caruso@am.jll.com)

## ***COURTNEY ROULEAU***

Vice President

+1 312 228 3431

[courtney.rouleau@am.jll.com](mailto:courtney.rouleau@am.jll.com)

Although information has been obtained from sources deemed reliable, neither Owner nor JLL makes any guarantees, warranties or representations, express or implied, as to the completeness or accuracy as to the information contained herein. Any projections, opinions, assumptions or estimates used are for example only. There may be differences between projected and actual results, and those differences may be material. The Property may be withdrawn without notice. Neither Owner nor JLL accepts any liability for any loss or damage suffered by any party resulting from reliance on this information. If the recipient of this information has signed a confidentiality agreement regarding this matter, this information is subject to the terms of that agreement. ©2022. Jones Lang LaSalle IP, Inc. All rights reserved.

