

GV5

BUILD THE FUTURE HERE

ADVANCED MANUFACTURING BUILD TO SUIT OPPORTUNITY

GRESHAM, OREGON

Jones Lang LaSalle Brokerage, Inc.



SPECHT





ADVANCING THE WAY THE WORLD IS BUILT

The Port of Portland (“Port”) has selected the Specht GV5 Team as Master Developer of Lot 5 at Gresham Vista Business Park (“GV5”), to develop a critical site for the advancement of the region’s economic future. The Specht GV5 Team includes a diverse range of developers, contractors, architects, and brokers, working together to accomplish their collective diversity, equity, and inclusion goals.

One of the few remaining large blocks of shovel-ready land in the Portland MSA, GV5 provides the ultimate build to suit opportunity to meet the needs of multiple user types and sizes. The preliminary concepts have been strategically developed to accommodate multiple small users, several medium users, or one large single user.

For Advanced Manufacturing companies looking to be located near innovation and talent, the proposed project’s design incorporates state-of-the-art industrial buildings with manufacturing attributes.

The initial GV5 site plan thoughtfully incorporates popular features and amenities to create a campus type environment, including activated outdoor common areas, integrated landscaping and walking paths for pedestrian circulation, perimeter jogging path and a food truck plaza.

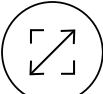
Business friendly tactics, tools and incentives are available to assist eligible companies who are willing to invest in Gresham and programs such as the Enterprise Zone, Oregon Strategic

Investment Program and System Development Charge Incentives programs will be made available. Additional discretionary pre-development resources are available through Business Oregon made available to qualified users.

To support employers with talent recruitment and the development of quality jobs, The City of Gresham is developing a jobs resource guide to identify community partners who will work together to assist in the recruitment of a skilled and diverse workforce, the implementation of job and technical training, mentorship programs and professional development.


Please note: All prospective tenants must meet the quality jobs criteria. For additional information, please reach out to JLL listing team.

GV5




819,000

TOTAL SQUARE FEET



ON

48 ACRES



LOCATED

15 MILES

FROM DOWNTOWN
PORTLAND

3

A

ARTICULATED AND
COVERED ENTRY

B

EXTERIOR GATHERING



D

INTEGRATED WATER
QUALITY, LANDSCAPE, AND
PEDESTRIAN CIRCULATION

C

ACTIVATED COMMON
OUTDOOR AMENITIES

G

CUL DE SAC WITH
MOUNTABLE PAVERS

E

CUL DE SAC WITH
LANDSCAPE FEATURE

H

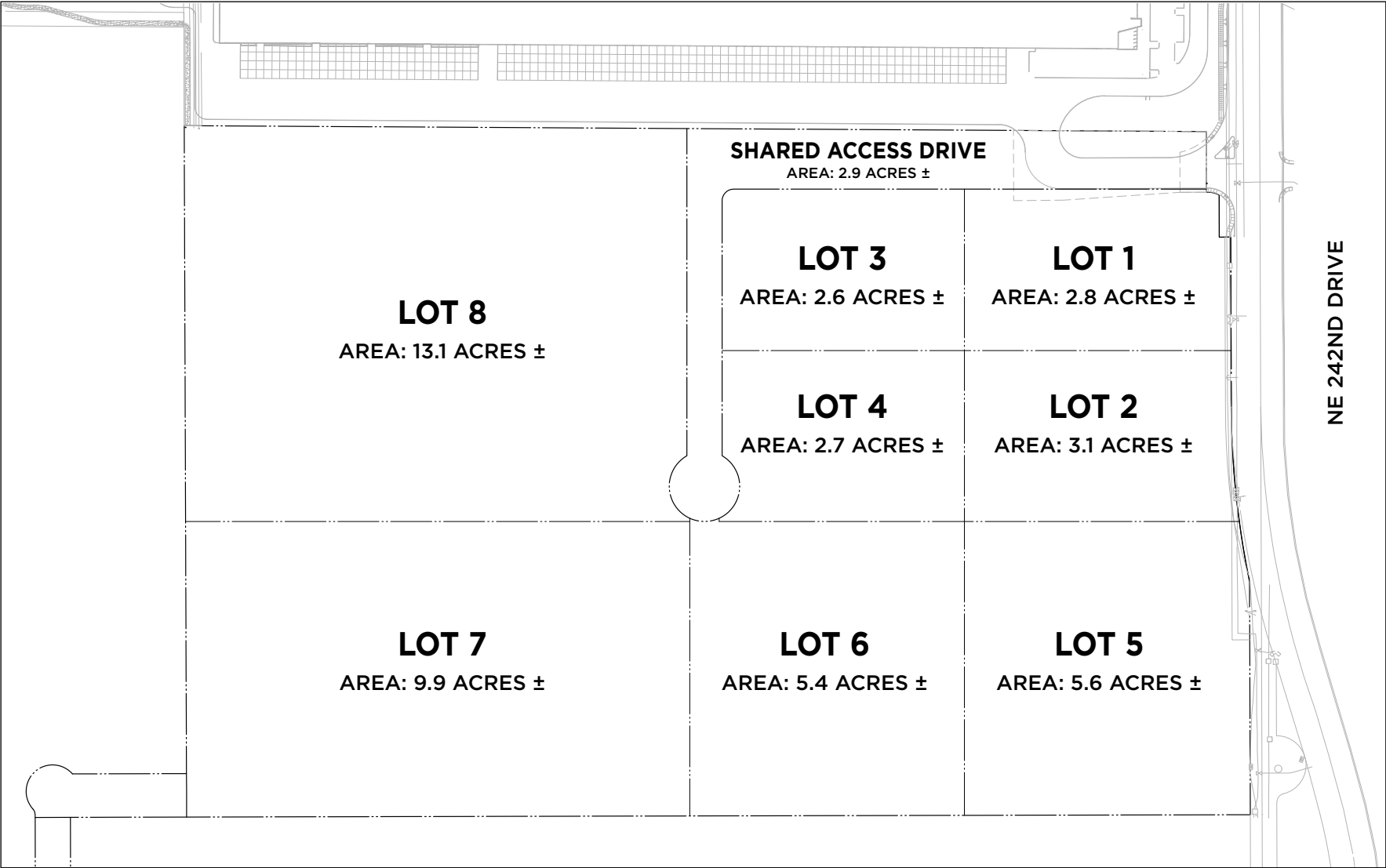
PERIMETER JOGGING PATH



CAMPUS CONCEPT RENDERINGS

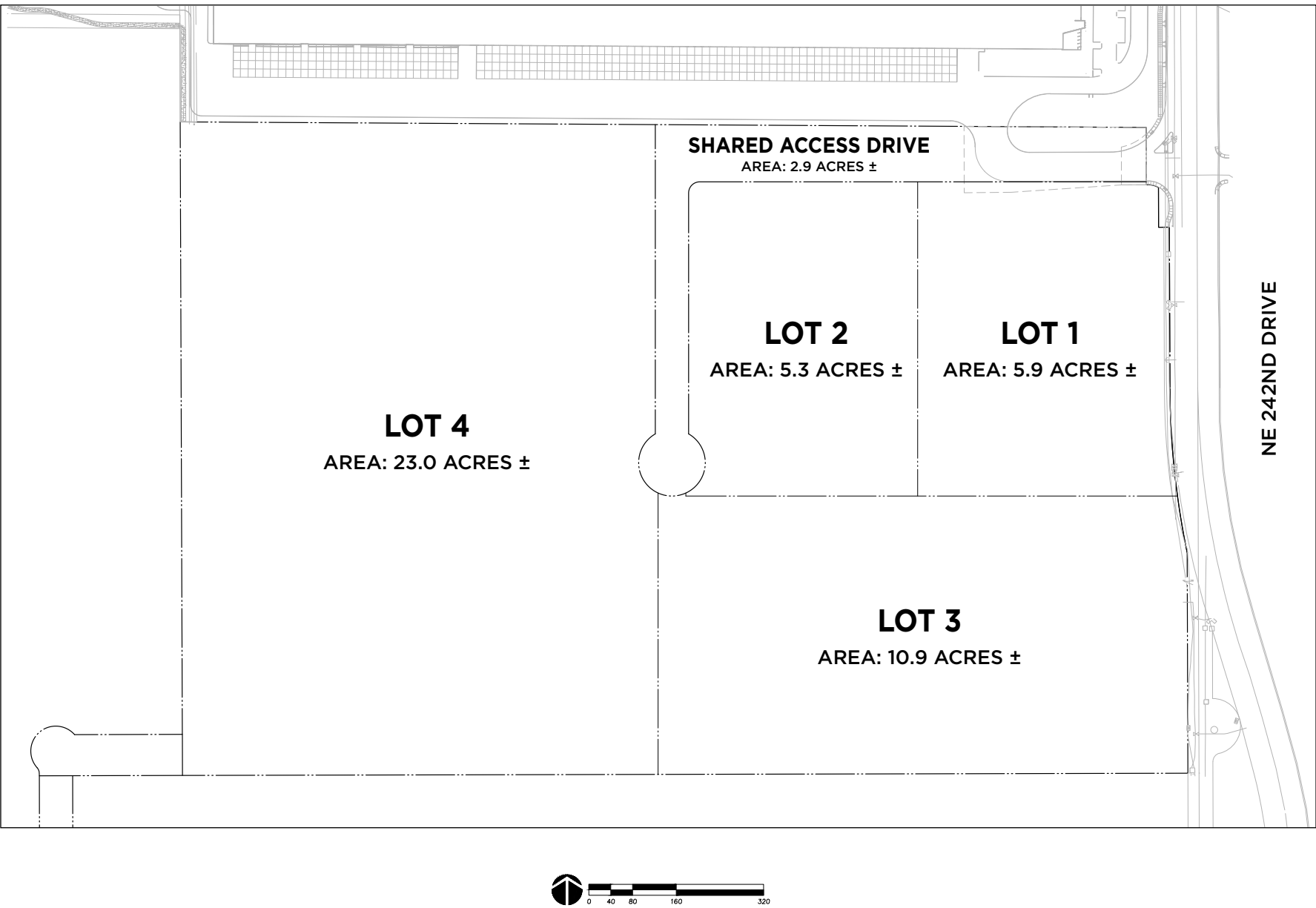
FLEXIBLE

MULTIPLE USER // SCENARIO A



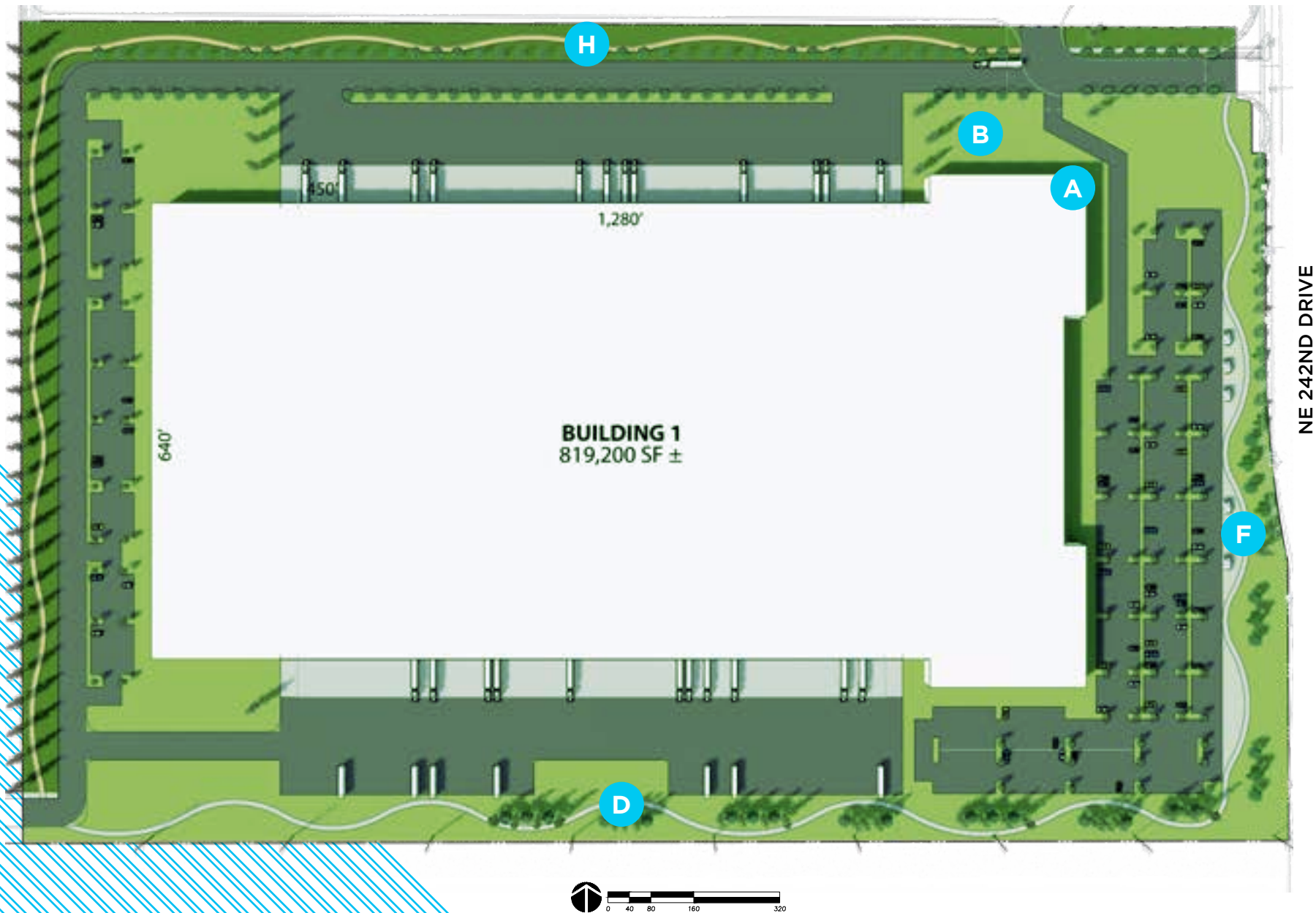
FEASIBLE

MULTIPLE USER // SCENARIO B

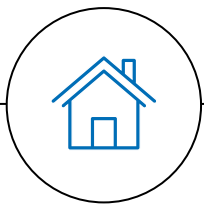


FUNCTIONAL

SINGLE USER SCENARIO



REGIONAL DEMOGRAPHICS



LIVING

2.53M

TOTAL REGIONAL POPULATION

38.4

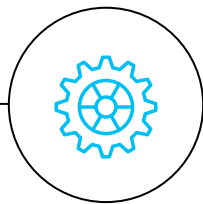
AVERAGE AGE

\$423,000

MEDIAN HOUSING COST

\$77,838

MEDIAN HOUSEHOLD INCOME



CREATING

25%

COLLEGE GRADUATES

1.2M

TOTAL REGIONAL EMPLOYEES

69K

REGIONAL MANUFACTURING EMPLOYEES

40K

REGIONAL ENGINEERS



EXPLORING

1.75

HOURS TO THE COAST

1.50

HOURS TO MT. HOOD

OVER

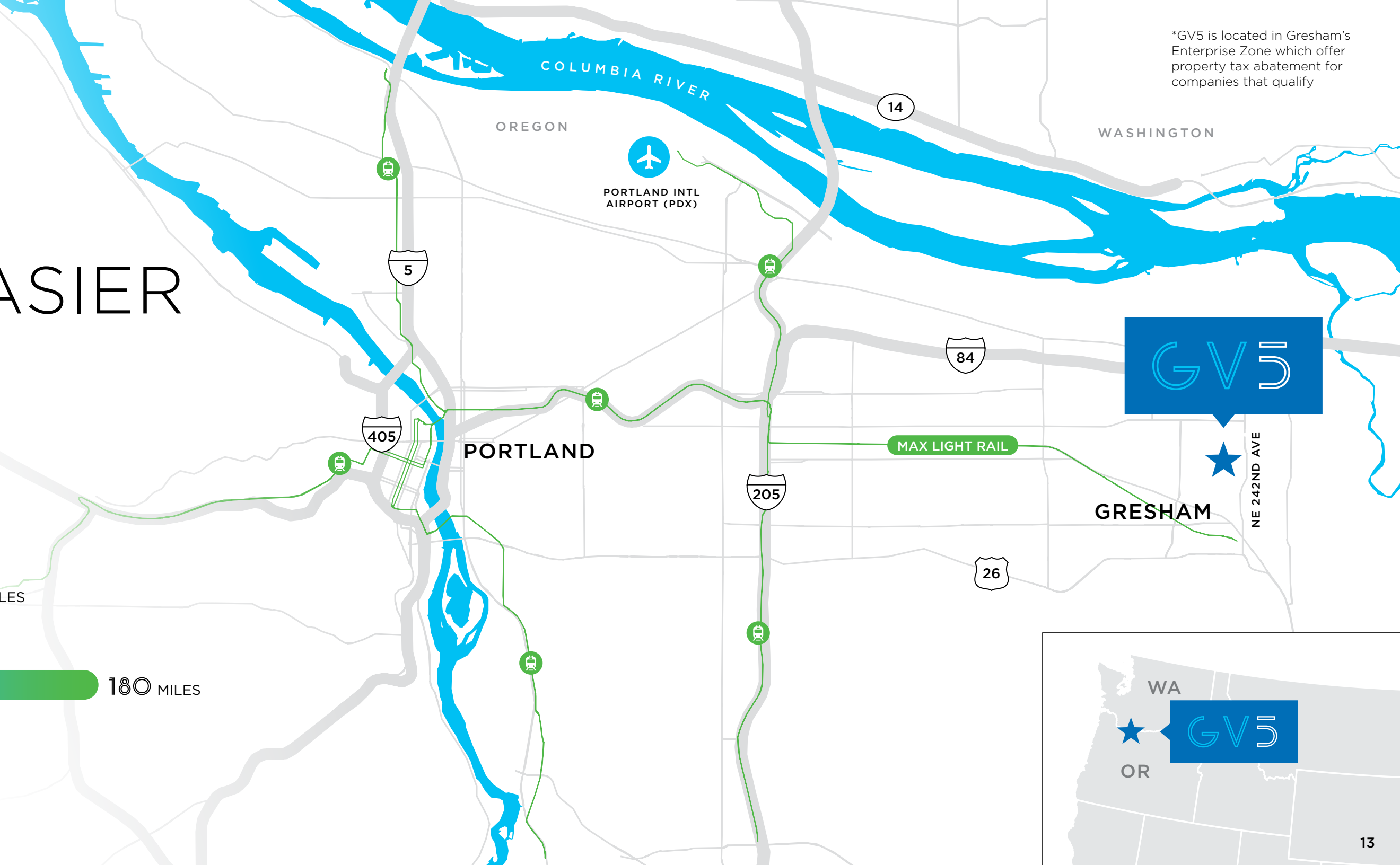
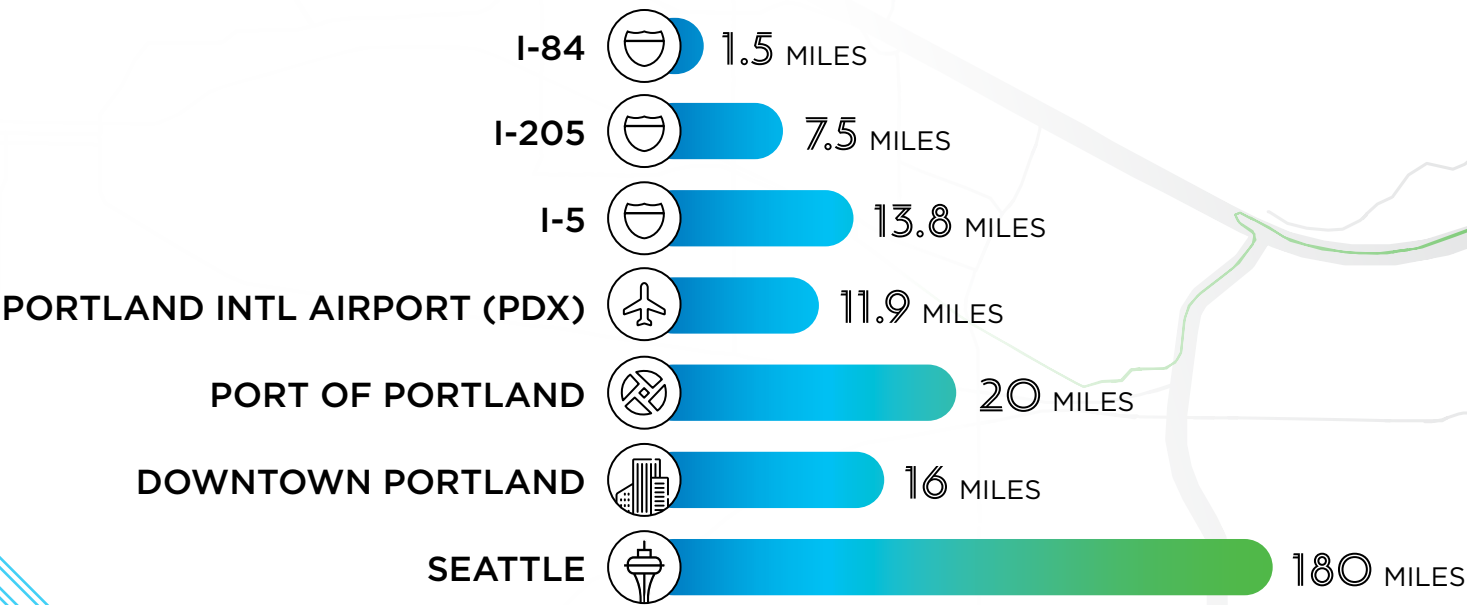
1,000

HIKING TRAILS

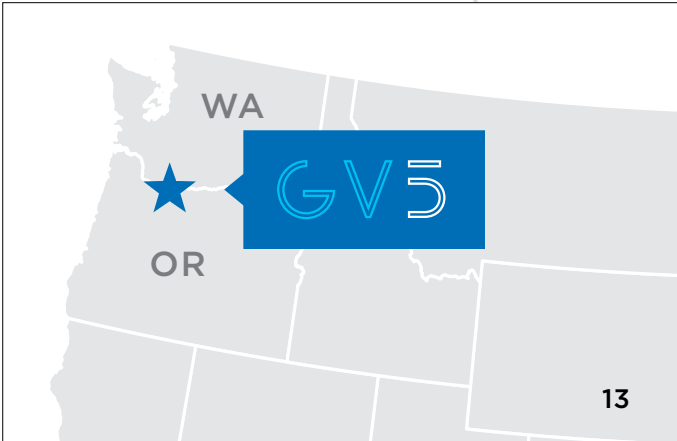
#1

MOST PET FRIENDLY STATE IN THE US

GETTING FROM POINT A TO POINT B HAS NEVER BEEN EASIER



*GV5 is located in Gresham's Enterprise Zone which offer property tax abatement for companies that qualify





CONTACT US

TYLER SHEILS, SIOR

+1 503 972 8603
tyler.sheils@am.jll.com
Licensed in OR

KEVIN KRIESIEN

+1 503 972 8613
kevin.kriesien@am.jll.com
Licensed in OR

AMELIA SALVADOR

+1 503 415 9556
amelia@ameliasalvador.properties
Licensed in OR

Jones Lang LaSalle Brokerage, Inc. 1120 NW Couch, Suite 500, Portland OR 97209

©2020 Jones Lang LaSalle IP, Inc. All rights reserved. All information contained herein is from sources deemed reliable; however, no representation or warranty is made to the accuracy thereof.



SPECHT

