



# 37939 Church Ave

Dade City, FL 33525



## Former Bank Branch

Reuse, Repositioning or Redevelopment Opportunity

- ±7,097 SF freestanding building
- ±0.66 acres; corner parcel
- Zoning: Commercial Business District
- ±38 parking spaces

## Contact



**Billy Rodriguez**

Senior Vice President

[billy.rodriquez@jll.com](mailto:billy.rodriquez@jll.com)

+1 407 443 3925

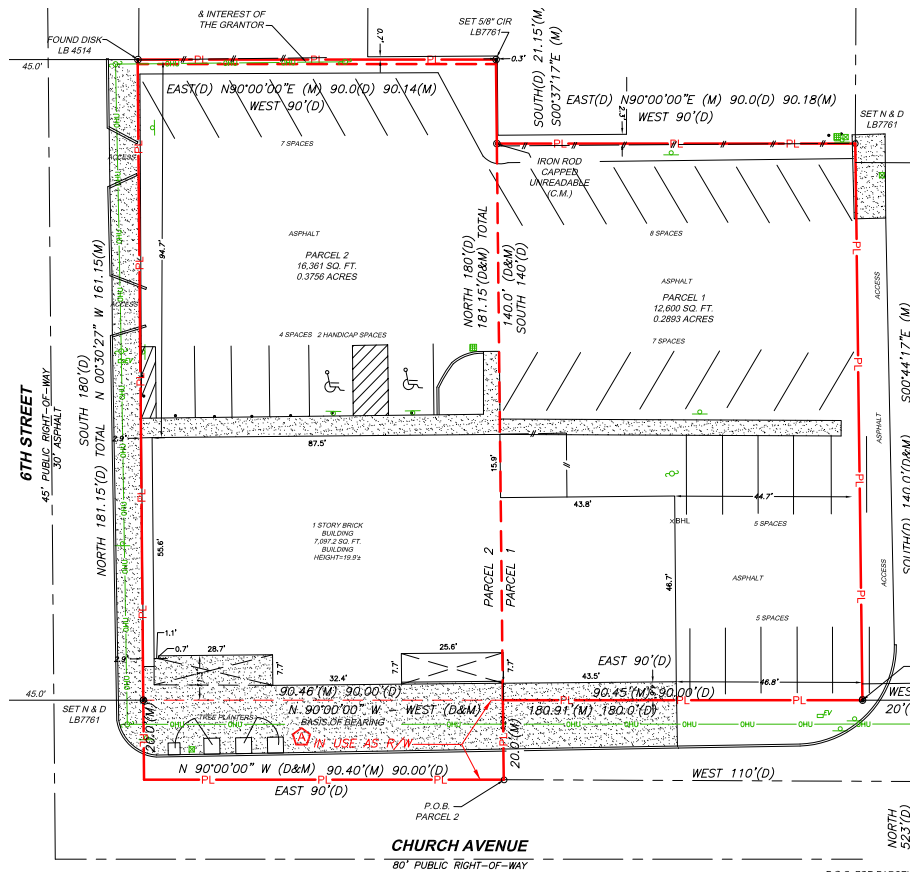
**BIDS DUE  
NOW**

For details on this property and others available nationwide please visit:

[www.BankingCentersForSale.com](http://www.BankingCentersForSale.com)



# Site Survey



# Demographics

POPULATION	HOUSEHOLDS	MEDIAN AGE	MEDIAN HOUSEHOLD INCOME
 <b>2 MI.</b> 11,652 <b>5 MI.</b> 28,294 <b>10 MI.</b> 102,420	 <b>2 MI.</b> 4,137 <b>5 MI.</b> 10,128 <b>10 MI.</b> 41,204	 <b>2 MI.</b> 36.7 <b>5 MI.</b> 40.8 <b>10 MI.</b> 48.1	 <b>2 MI.</b> \$51,560 <b>5 MI.</b> \$58,808 <b>10 MI.</b> \$54,927



Although information has been obtained from sources deemed reliable, JLL does not make any guarantees, warranties or representations, express or implied, as to the completeness or accuracy as to the information contained herein. Any projections, opinions, assumptions or estimates used are for example only. There may be differences between projected and actual results, and those differences may be material. JLL does not accept any liability for any loss or damage suffered by any party resulting from reliance on this information. If the recipient of this information has signed a confidentiality agreement with JLL regarding this matter, this information is subject to the terms of that agreement. ©2022. Jones Lang LaSalle IP, Inc. All rights reserved.

