



For Lease

Beautiful medical office building

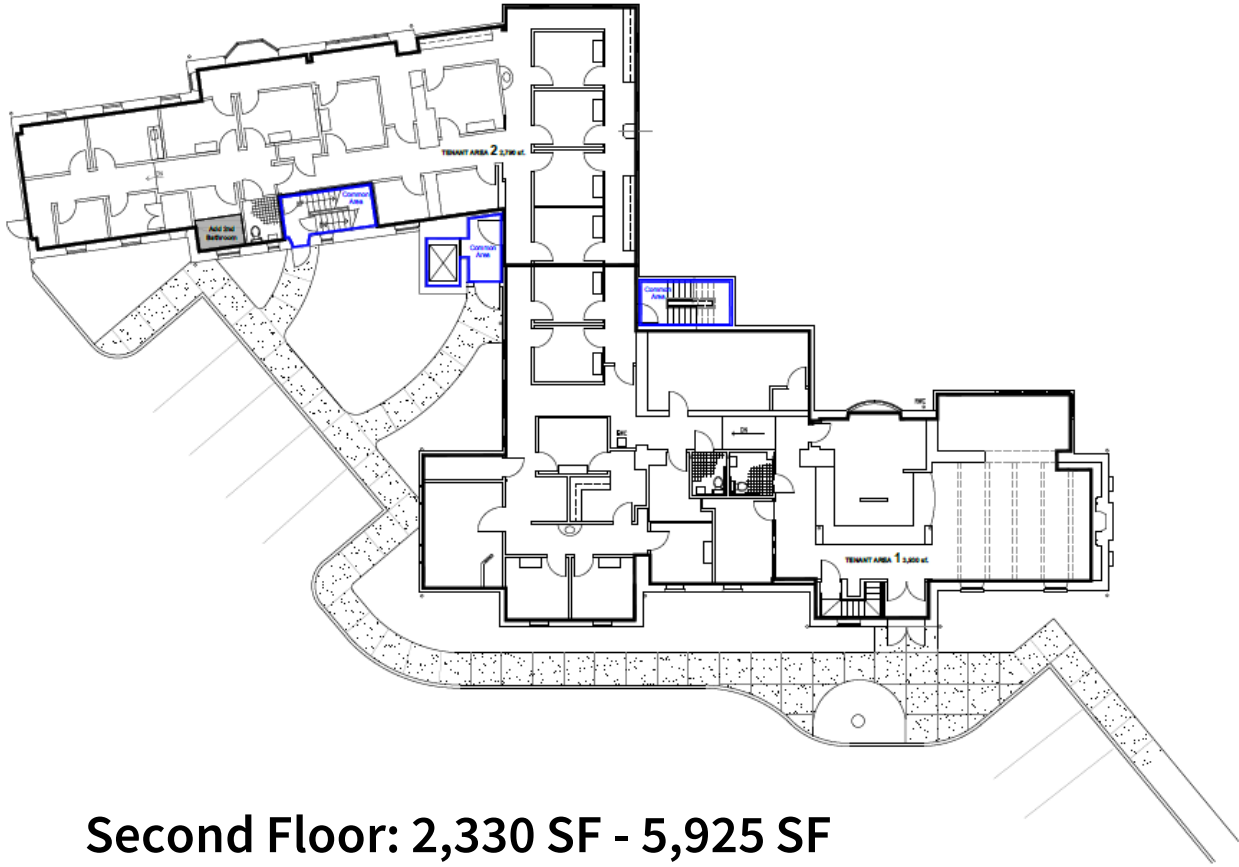
- Over 30 exam rooms in place
- 8 bathrooms
- Multiple exterior entrances
- Elevator access to second floor
- Large parking lot- 67 spaces

**3110 Grant Avenue
Philadelphia, PA**

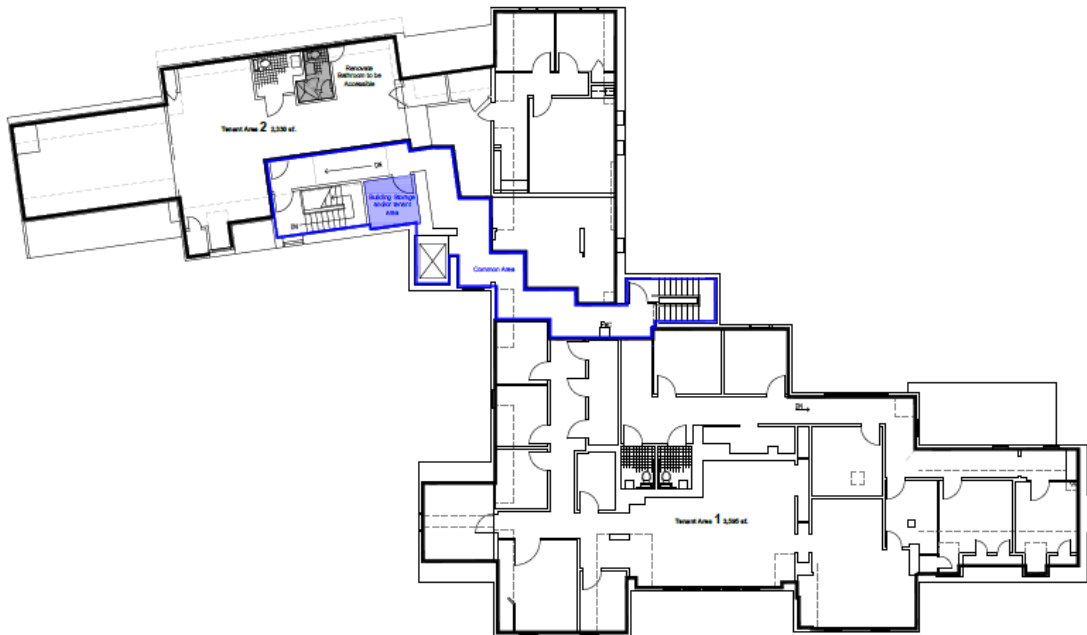
Patrick Grenko
+1 215 399 1803
patrick.grenko@am.jll.com

Joe Carroll
+1 215 399 1809
joe.carroll@am.jll.com

First Floor: 2,790 SF - 6,720 SF



Second Floor: 2,330 SF - 5,925 SF



Disclaimer

Although information has been obtained from sources deemed reliable, neither Owner nor JLL makes any guarantees, warranties or representations, express or implied, as to the completeness or accuracy as to the information contained herein. Any projections, opinions, assumptions or estimates used are for example only. There may be differences between projected and actual results, and those differences may be material. The Property may be withdrawn without notice. Neither Owner nor JLL accepts any liability for any loss or damage suffered by any party resulting from reliance on this information. If the recipient of this information has signed a confidentiality agreement regarding this matter, this information is subject to the terms of that agreement. ©2021. Jones Lang LaSalle IP, Inc. All rights reserved.

