



# 4900 N Broad Street

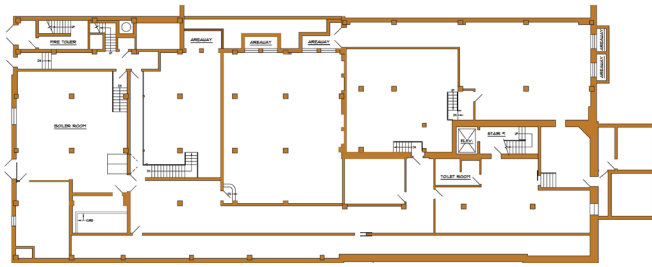
Philadelphia, PA 19141

**86,000 RSF available**

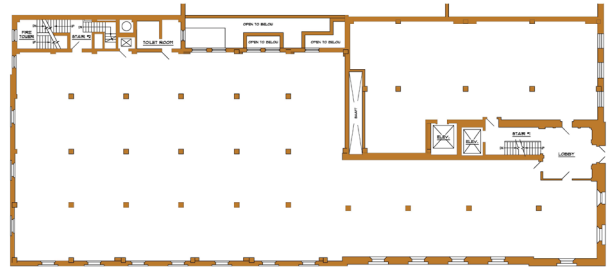
- > Near Temple University Medical Center
- > Open floor plans; can be divided
- > Large windows/abundant natural light
- > Polished concrete floors
- > New, energy efficient HVAC systems with exposed ductwork and app based controls for heating/cooling
- > New electrical and tele/data services with cable trays



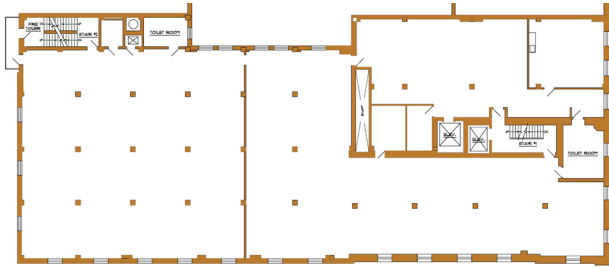
## Basement



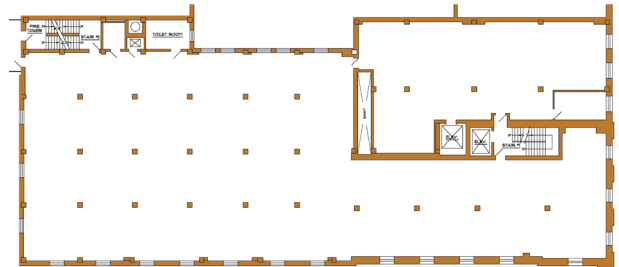
## First Floor



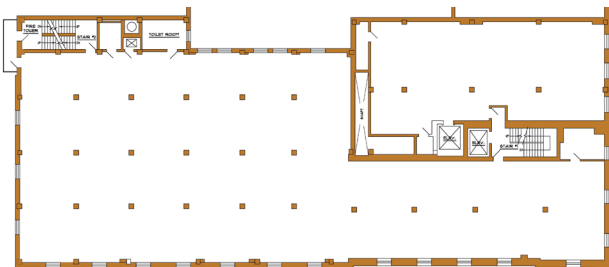
## Second Floor



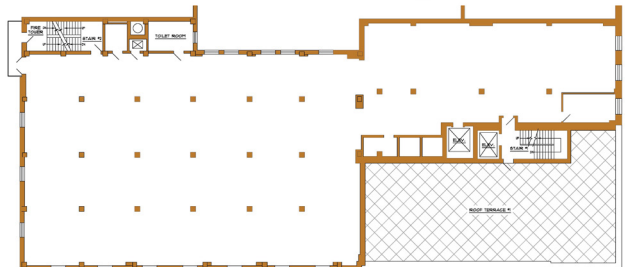
## Third Floor



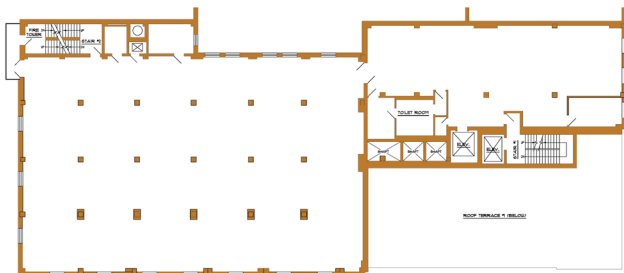
## Fourth Floor



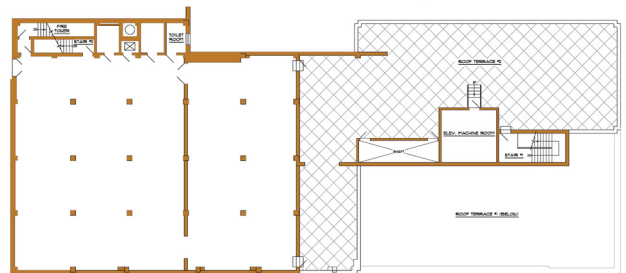
## Fifth Floor



## Sixth Floor



## Penthouse



### Contact

Alex Breitmayer

+1 215 399 1813

alex.breitmayer@am.jll.com

Eric Berkowitz

+1 919 985 1421

eric.berkowitz@am.jll.com

Jones Lang LaSalle Brokerage, Inc. | 1650 Arch Street, Suite 2500 | Philadelphia, PA 19103 | +1 215 988 5500



Although information has been obtained from sources deemed reliable, neither Owner nor JLL makes any guarantees, warranties or representations, express or implied, as to the completeness or accuracy as to the information contained herein. Any projections, opinions, assumptions or estimates used are for example only. There may be differences between projected and actual results, and those differences may be material. The Property may be withdrawn without notice. Neither Owner nor JLL accepts any liability for any loss or damage suffered by any party resulting from reliance on this information. If the recipient of this information has signed a confidentiality agreement regarding this matter, this information is subject to the terms of that agreement.

©2022. Jones Lang LaSalle IP, Inc. All rights reserved.