



FOR LEASE

**APPROXIMATELY
200,000 SF**

MERIDIAN
CENTER

**450 S.
MERIDIAN
STREET**



BUILDING FEATURES

Electrical

Two 2500-AMP services and
2000-AMP service

Back-Up Generator

500 KVA

Interior Finish

Metal stud/drywall with paint, carpet,
dropped acoustic tile ceiling with primarily
fluorescent lighting

P Attached Nine-Story Garage (5/1,000)

E High Ceilings Measuring 11' 2"

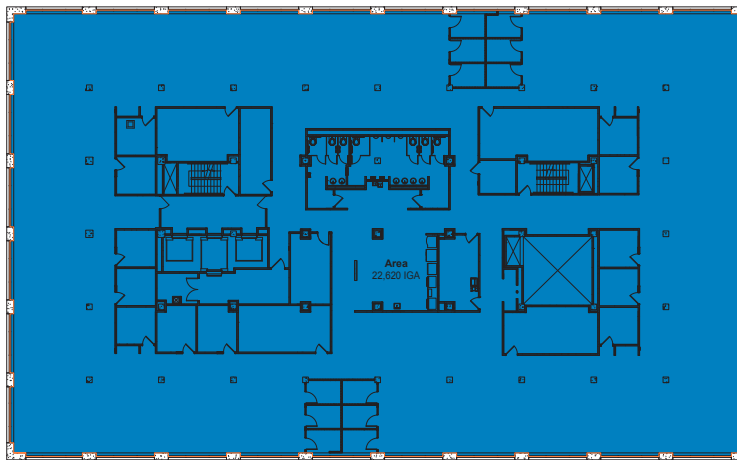
Building Icon Large Available Block of Space in
Downtown Indianapolis

Sun Icon Open Floorplan with Abundant
Natural Light

Door Icon Options for Demising

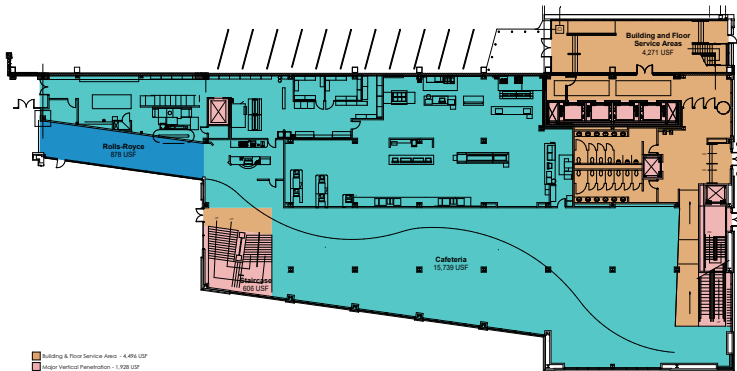
SAMPLE FLOOR PLATE

±23,000 SF



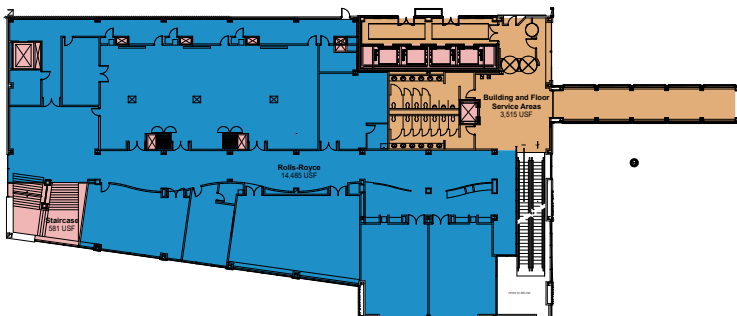
CONNECTOR FLOOR 1

±19,000 SF



CONNECTOR FLOOR 2

±17,000 SF





CONTACT INFORMATION

JOHN VANDENBARK
MANAGING DIRECTOR

+1 317 810 7178
john.vandenbark@am.jll.com

BETH SALLEE
VICE PRESIDENT

+1 317 810 7012
beth.sallee@am.jll.com

Although information has been obtained from sources deemed reliable, JLL does not make any guarantees, warranties or representations, express or implied, as to the completeness or accuracy as to the information contained herein. Any projections, opinions, assumptions or estimates used are for example only. There may be differences between projected and actual results, and those differences may be material. JLL does not accept any liability for any loss or damage suffered by any party resulting from reliance on this information. If the recipient of this information has signed a confidentiality agreement with JLL regarding this matter, this information is subject to the terms of that agreement. ©2022. Jones Lang LaSalle IP, Inc. All rights reserved.