



Wanamaker Building

100 E Penn Square
Philadelphia, PA 19107

18,751 SF
Available for Sublease

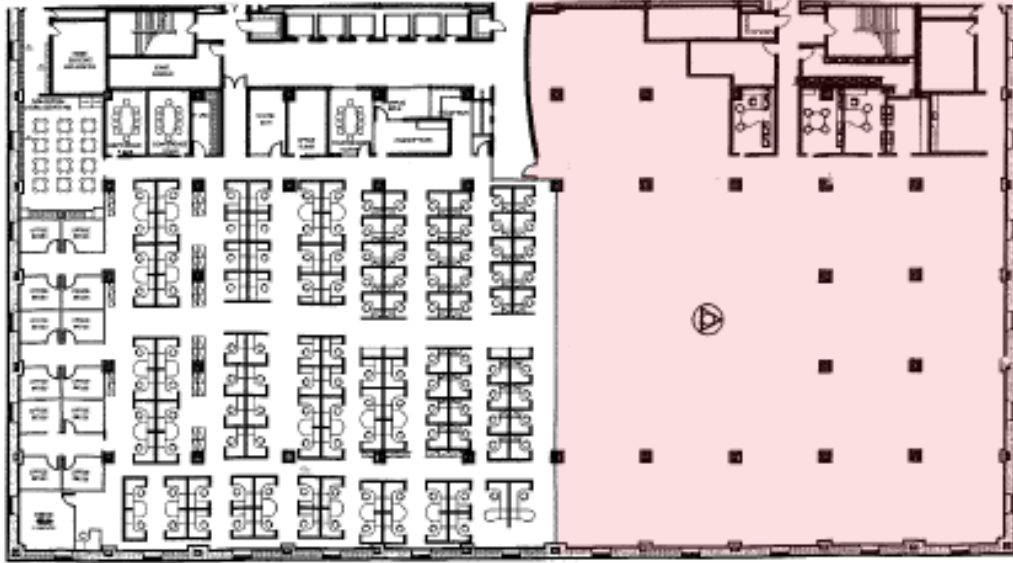
Peter Barnes

(m) +1 215 399 1824 (e) peter.barnes@am.jll.com

Anthony LiVecchi

(m) +1 215 399 1817 (e) anthony.livecchi@am.jll.com

12th Floor: 18,751 SF Available for Sublease



Overview

- > Creative loft style space
- > 40' ceilings
- > Furniture available
- > Abundant natural light
- > Incredible location right in the heart of Center City
- > Sublease through 10/31/2023



Amenities

- ★ First class tenant amenity center
- ★ Fitness center
- ★ Conference space



Jones Lang LaSalle Brokerage, Inc.
1650 Arch Street, Suite 2500, Philadelphia, PA 19103

Although information has been obtained from sources deemed reliable, JLL does not make any guarantees, warranties or representations, express or implied, as to the completeness or accuracy as to the information contained herein. Any projections, opinions, assumptions or estimates used are for example only. There may be differences between projected and actual results, and those differences may be material. JLL does not accept any liability for any loss or damage suffered by any party resulting from reliance on this information. If the recipient of this information has signed a confidentiality agreement with JLL regarding this matter, this information is subject to the terms of that agreement. ©2021. Jones Lang LaSalle IP, Inc. All rights reserved.