



# 5201 Old York Road

Philadelphia, PA 19141



## For lease: built-out long term care facility

- Two standalone LTC opportunities, can be leased separately or together
- Existing amenities – gymnasium, cafeteria, kitchen



### Building A (Robinson Building)

Basement/Ground Level Entrance	8,050 RSF
1	16,388 RSF
2	16,388 RSF
3	16,388 RSF
4	16,388 RSF
	73,602 RSF

### Building B (Levine Building)

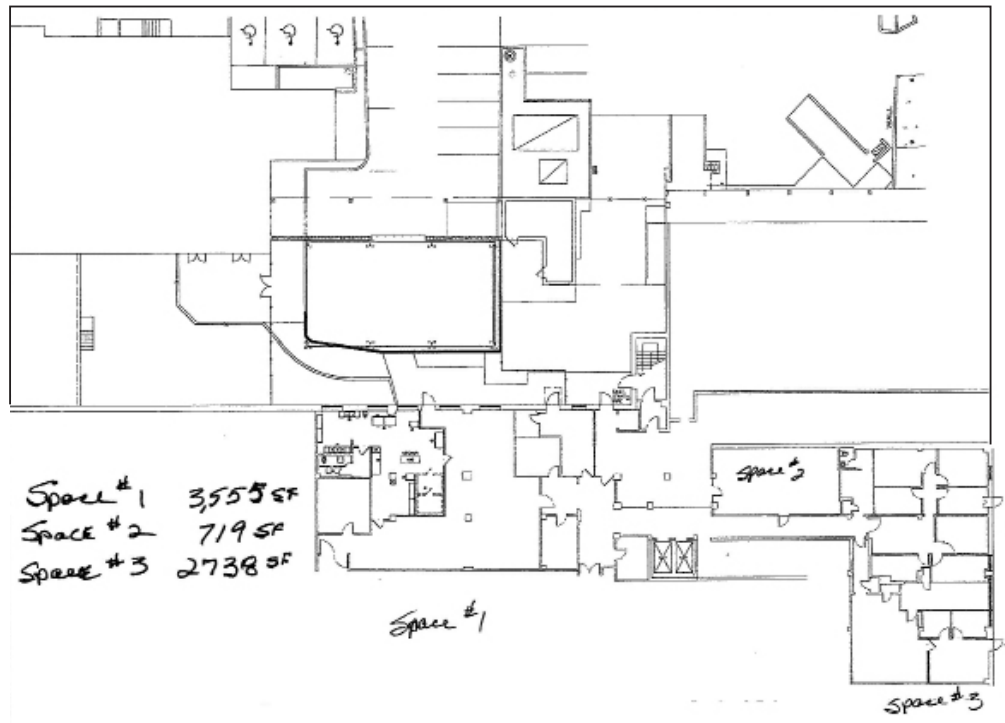
1	1,150 RSF
2	21,024 RSF
3	21,024 RSF
4	21,024 RSF
	64,222 RSF



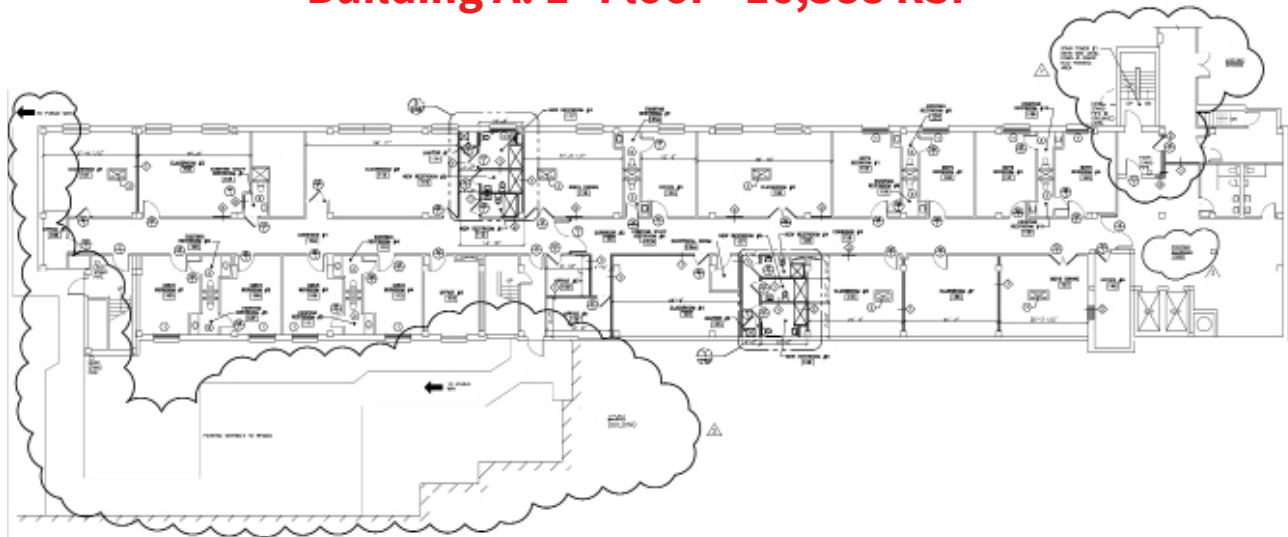
# 5201 Old York Road

Philadelphia, PA 19141

## Building A: Basement/Ground Level - 8,050 RSF



## Building A: 1<sup>st</sup> Floor - 16,388 RSF

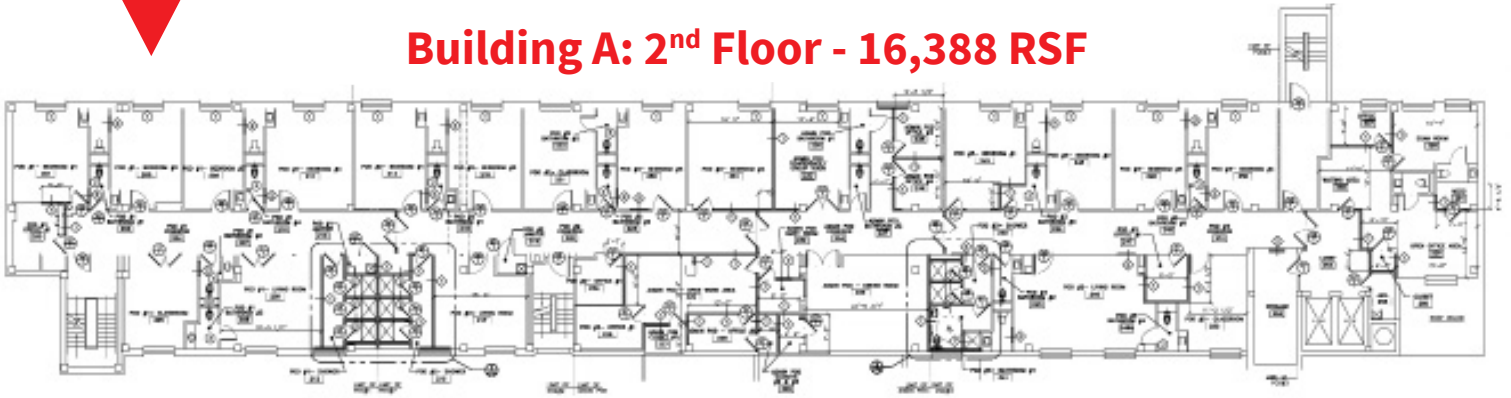




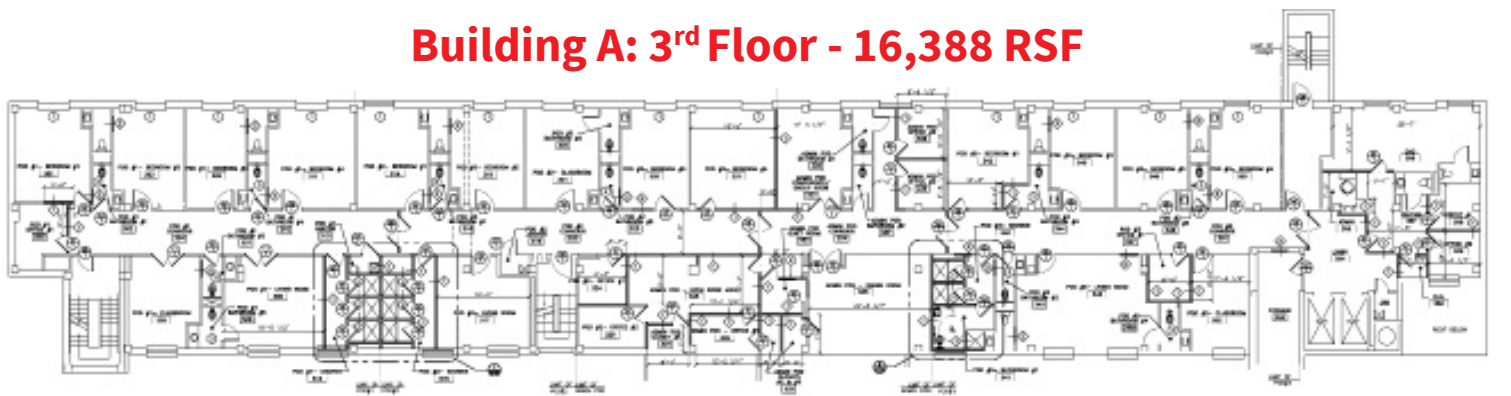
# 5201 Old York Road

Philadelphia, PA 19141

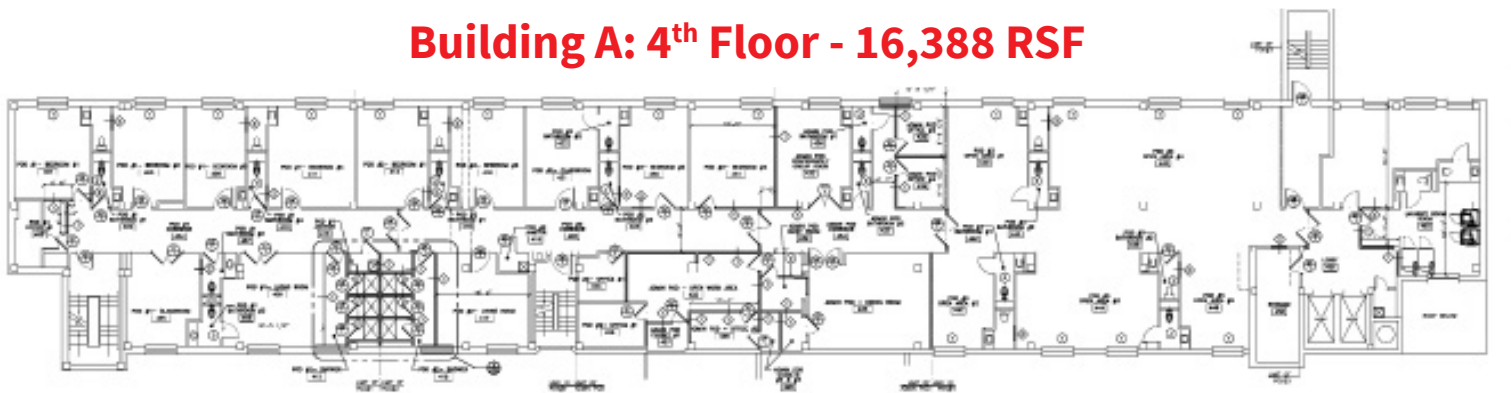
## Building A: 2<sup>nd</sup> Floor - 16,388 RSF



## Building A: 3<sup>rd</sup> Floor - 16,388 RSF



## Building A: 4<sup>th</sup> Floor - 16,388 RSF

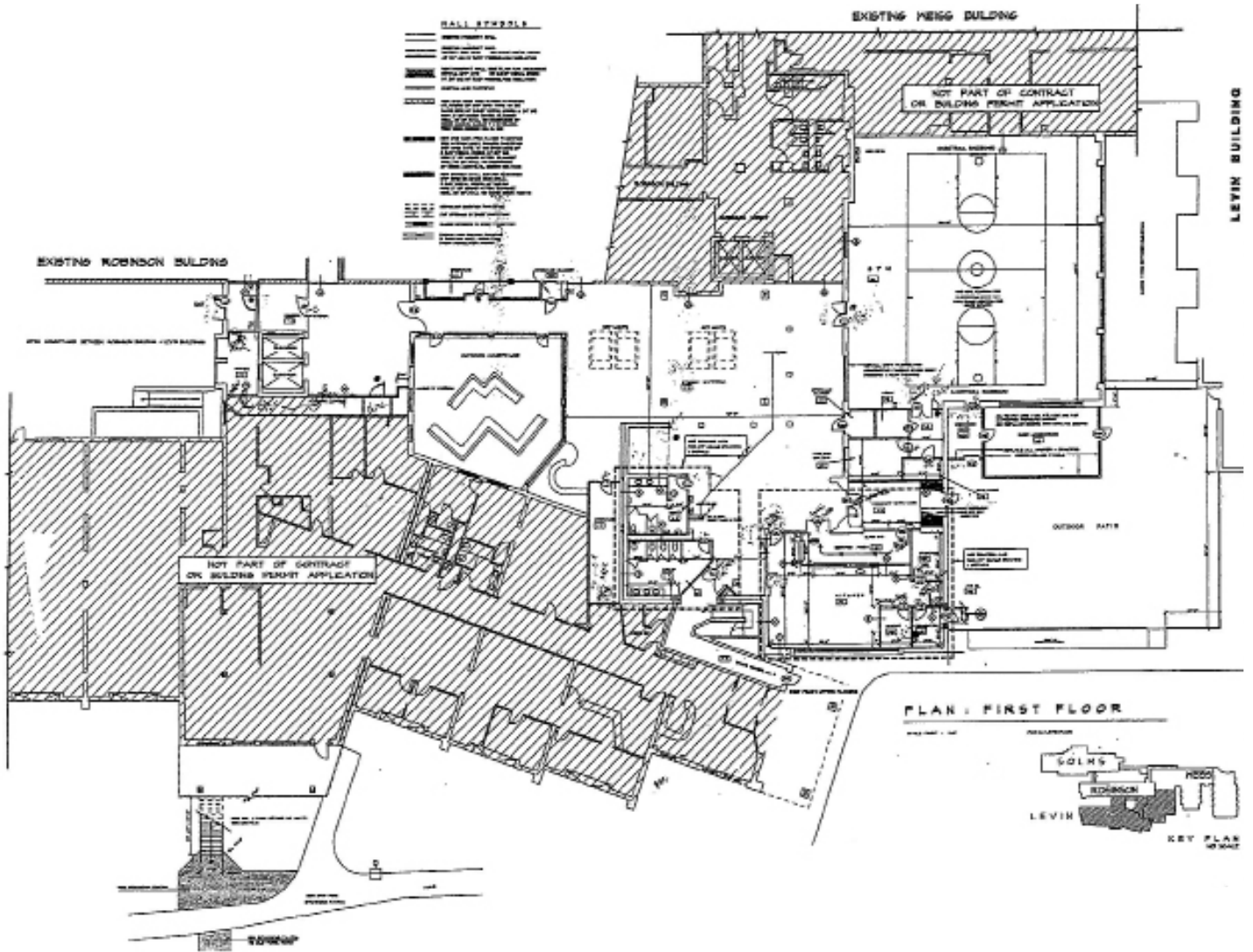




# 5201 Old York Road

Philadelphia, PA 19141

## Building B: 1<sup>st</sup> Floor - 1,150 RSF

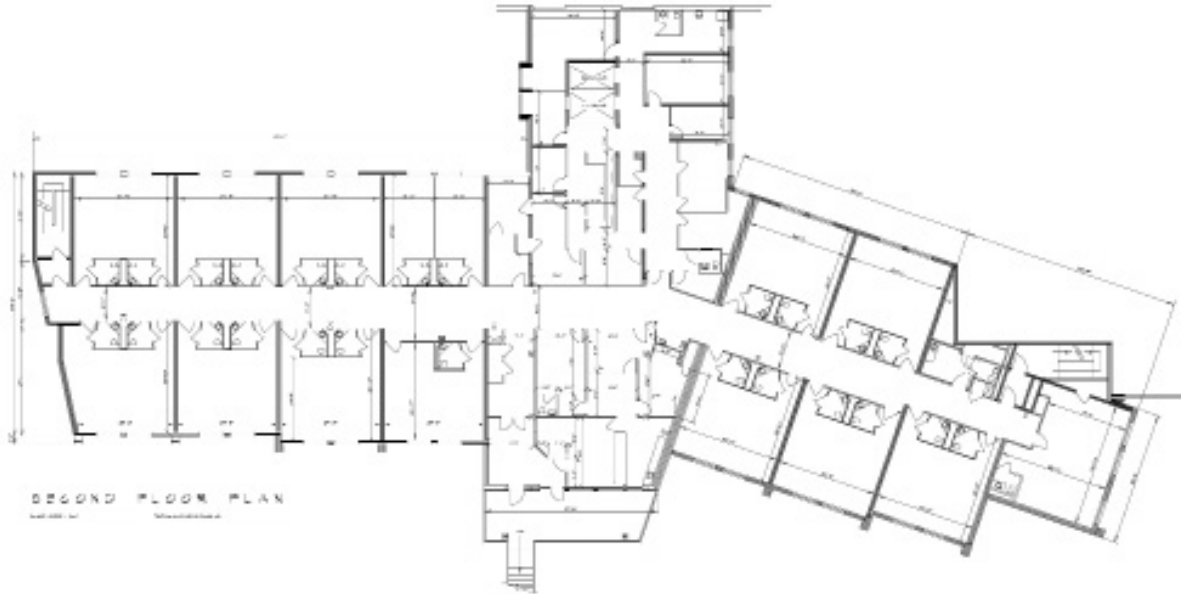




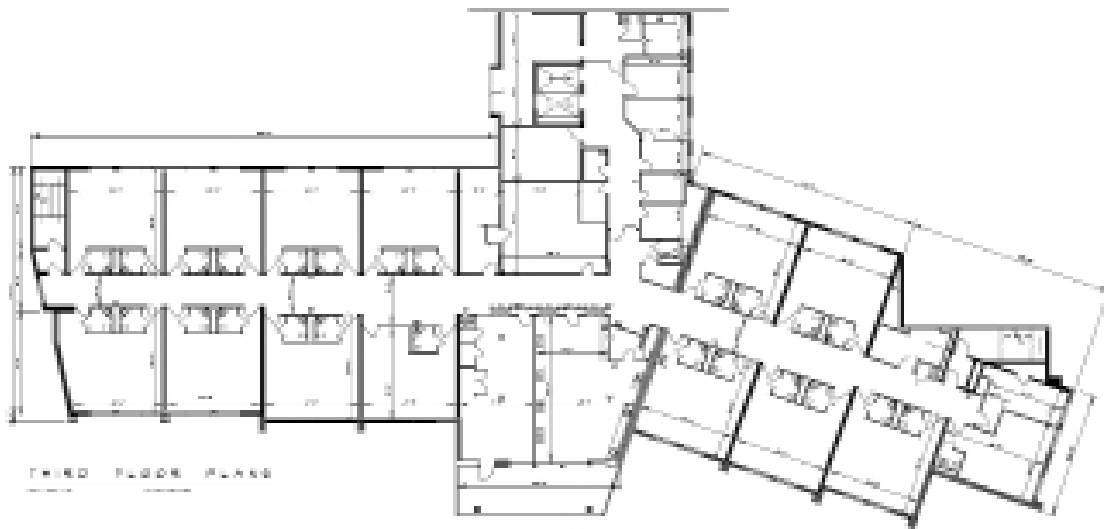
# 5201 Old York Road

Philadelphia, PA 19141

## Building B: 2<sup>nd</sup> Floor - 21,024 RSF



## Building B: 3<sup>rd</sup> Floor - 21,024 RSF





# 5201 Old York Road

Philadelphia, PA 19141

## Building B: 4<sup>th</sup> Floor - 21,024 RSF



### Contact

Alex Breitmayer

+1 215 399 1813

alex.breitmayer@am.jll.com

Eric Berkowitz

+1 610 416 2226

eric.berkowitz@am.jll.com

Jones Lang LaSalle Brokerage, Inc. | 1650 Arch Street, Suite 2500 | Philadelphia, PA 19103 | +1 215 988 5500

Although information has been obtained from sources deemed reliable, neither Owner nor JLL makes any guarantees, warranties or representations, express or implied, as to the completeness or accuracy as to the information contained herein. Any projections, opinions, assumptions or estimates used are for example only. There may be differences between projected and actual results, and those differences may be material. The Property may be withdrawn without notice. Neither Owner nor JLL accepts any liability for any loss or damage suffered by any party resulting from reliance on this information. If the recipient of this information has signed a confidentiality agreement regarding this matter, this information is subject to the terms of that agreement. ©2022. Jones Lang LaSalle IP, Inc. All rights reserved.

