



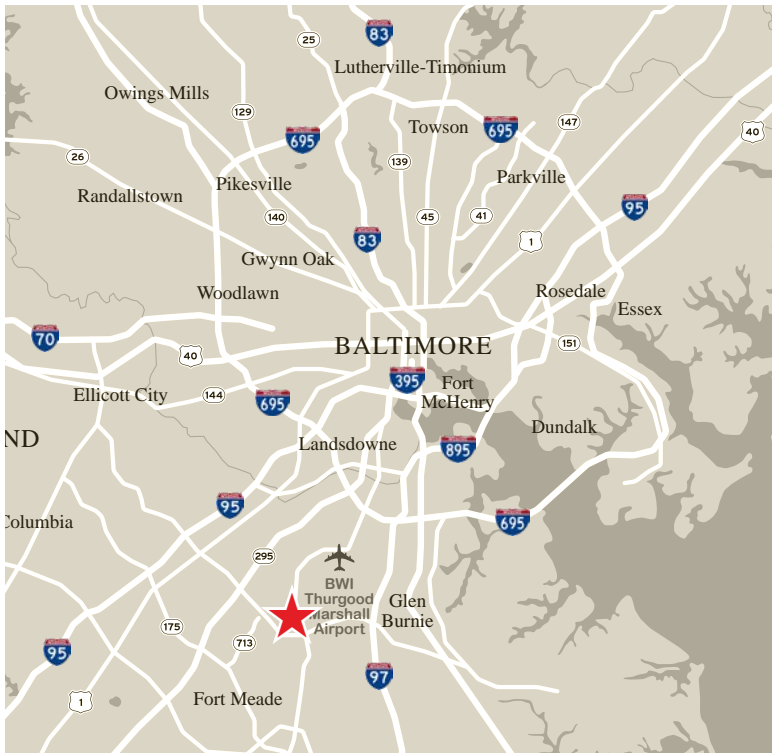
50,421 s.f.

Class A Warehouse Space Available

50,421 s.f. of
class A warehouse
space available

7462 Candlewood Road

Hanover, MD



Location

- Located directly off Dorsey Road (Route 176)
- 2 miles from amenity rich Arundel Mills
- 3 miles from Maryland Route 295 (Baltimore-Washington Parkway)
- 4.5 miles from BWI Airport
- 5 miles from I-95 and I-97

Property specifications

- 126' truck court
- Build to suit office
- Wet sprinkler system
- 23' - 25' clear height
- 7 dock doors
- 40' x 40' column spacing
- 246' - 278'7" building depth
- 6" concrete floor slab
- LED lighting with motion sensors

Site Plan



JLL

Ben Meisels

+1 443 451 2614

ben.meisels@jll.com

Greg Ferraro

+1 443 451 2618

greg.ferraro@jll.com

Rob Maddux

+1 443 931 3353

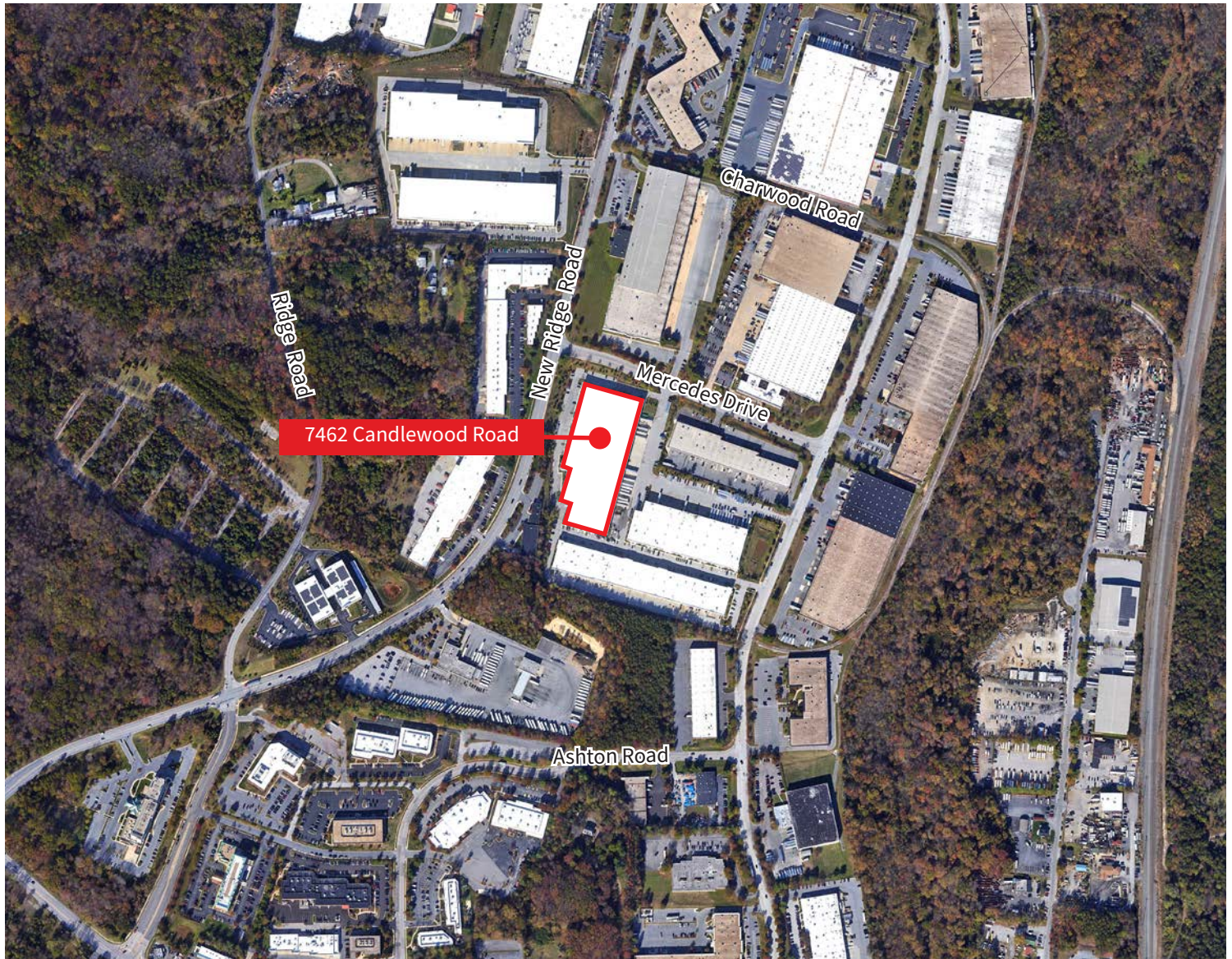
rob.maddux@jll.com

DISCLAIMER

Although information has been obtained from sources deemed reliable, Owner, Jones Lang LaSalle, and/or their representatives, brokers or agents make no guarantees as to the accuracy of the information contained herein, and offer the Property without express or implied warranties of any kind. The Property may be withdrawn without notice. If the recipient of this information has signed a confidentiality agreement regarding this matter, this information is subject to the terms of that agreement. ©2017, Jones Lang LaSalle. All rights reserved.

www.jll.com/baltimore

Location



JLL

Ben Meisels

+1 443 451 2614
ben.meisels@jll.com

Greg Ferraro

+1 443 451 2618
greg.ferraro@jll.com

Rob Maddux

+1 443 931 3353
rob.maddux@jll.com

DISCLAIMER
Although information has been obtained from sources deemed reliable, Owner, Jones Lang LaSalle, and/or their representatives, brokers or agents make no guarantees as to the accuracy of the information contained herein, and offer the Property without express or implied warranties of any kind. The Property may be withdrawn without notice. If the recipient of this information has signed a confidentiality agreement regarding this matter, this information is subject to the terms of that agreement. ©2017, Jones Lang LaSalle. All rights reserved.

www.jll.com/baltimore