



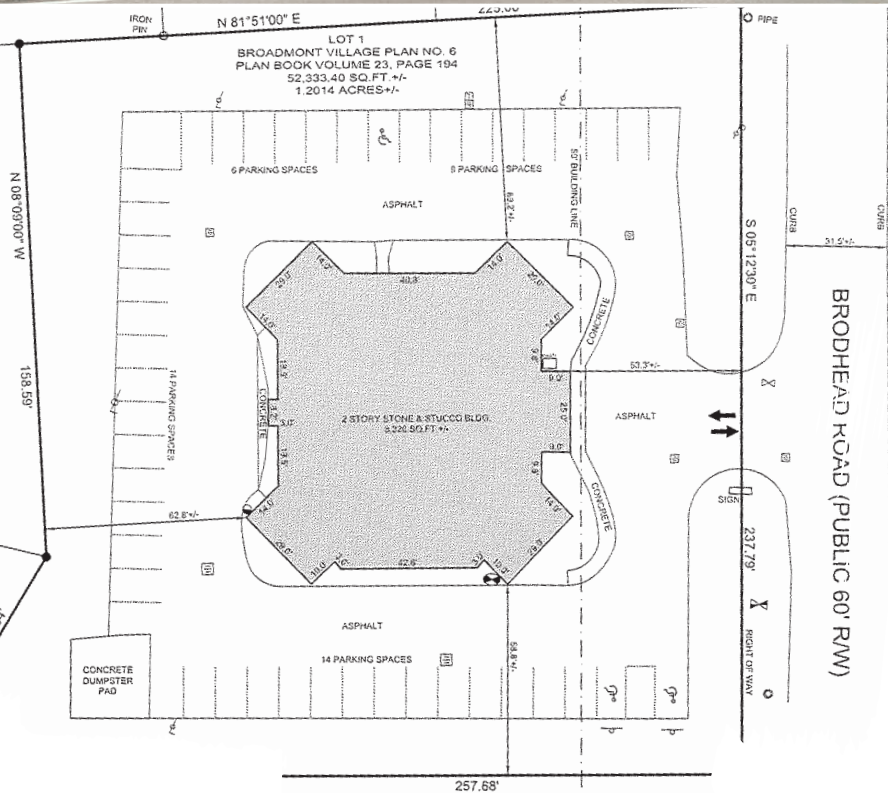
# For Lease or Sale

## 3-Story, Professional Office Building

2139 Brodhead Road  
Hopewell Township,  
Pennsylvania 15001

- 21,500 SF
- 1.2-acre site
- Steel, masonry and glass construction
- Located 18 miles west of Pittsburgh
  - Easy access to Pittsburgh International Airport & Routes 51 and 60
- Free surface parking field surrounding the building
- Constructed in 1992
- Zoned Commercial Highway C-1
- Excellent signage/identity opportunity on Brodhead Road

**Jeffrey Adams**  
+1 412 208 1404  
jeff.adams@am.jll.com  
Jones Lang LaSalle, Americas, Inc.



Although information has been obtained from sources deemed reliable, neither Owner nor JLL makes any guarantees, warranties or representations, express or implied, as to the completeness or accuracy as to the information contained herein. Any projections, opinions, assumptions or estimates used are for example only. There may be differences between projected and actual results, and those differences may be material. The Property may be withdrawn without notice. Neither Owner nor JLL accepts any liability for any loss or damage suffered by any party resulting from reliance on this information. If the recipient of this information has signed a confidentiality agreement regarding this matter, this information is subject to the terms of that agreement. ©2020 Jones Lang LaSalle IP, Inc. All rights reserved.

