



1475
Phoenixville Pike

Glenloch
West Chester, PA

For Sublease

- 19,834 SF on the 3rd floor
- Fully furnished with 123 work stations
- Lease expiration: 2/28/27
- Asking rate: \$18.75/SF + electric
- 2 conference rooms and reception area
- Tenant controlled thermostat
- Private bathrooms

Amenities



Central location
and excellent
commuter
access



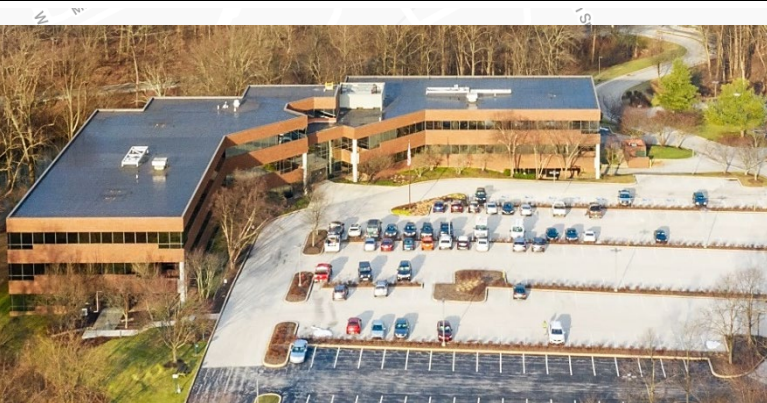
Ample on-site
parking



Large kitchen/
decompression
area



19,834 SF available immediately



Eric Wahlers
Senior Managing Director

+1 610 585 7114
eric.wahlers@jll.com

Katherine Hollingsworth
Associate

+1 215 282 4628
kat.hollingsworth@jll.com

Jones Lang LaSalle Brokerage, Inc. | 550 E. Swedesford Road, Suite 260, Wayne, PA 19087
+1 610 249 2255

Although information has been obtained from sources deemed reliable, JLL does not make any guarantees, warranties or representations, express or implied, as to the completeness or accuracy as to the information contained herein. Any projections, opinions, assumptions or estimates used are for example only. There may be differences between projected and actual results, and those differences may be material. JLL does not accept any liability for any loss or damage suffered by any party resulting from reliance on this information. If the recipient of this information has signed a confidentiality agreement with JLL regarding this matter, this information is subject to the terms of that agreement. ©2022. Jones Lang LaSalle IP, Inc. All rights reserved.