

Medical Office Space For Lease



Call for Rental Rates

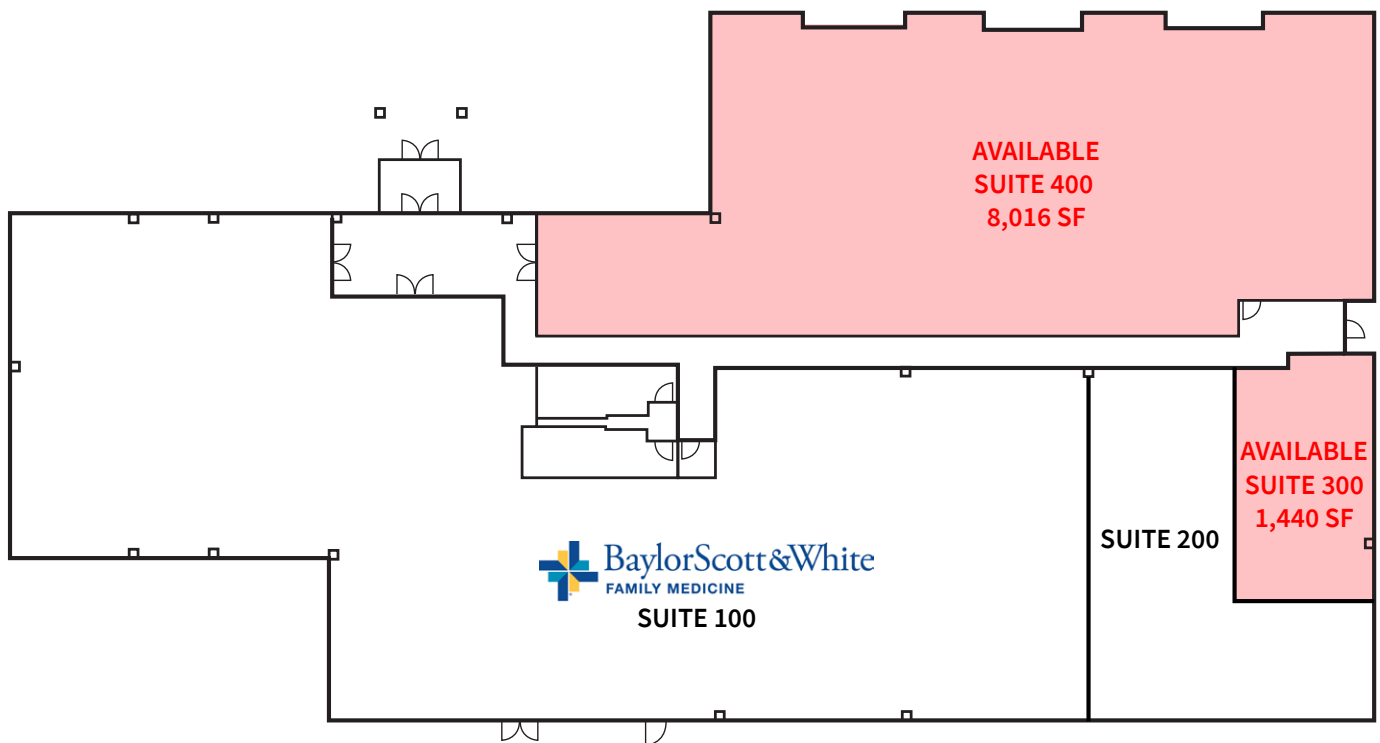
2520 N Central Expy
Richardson, Texas 75080

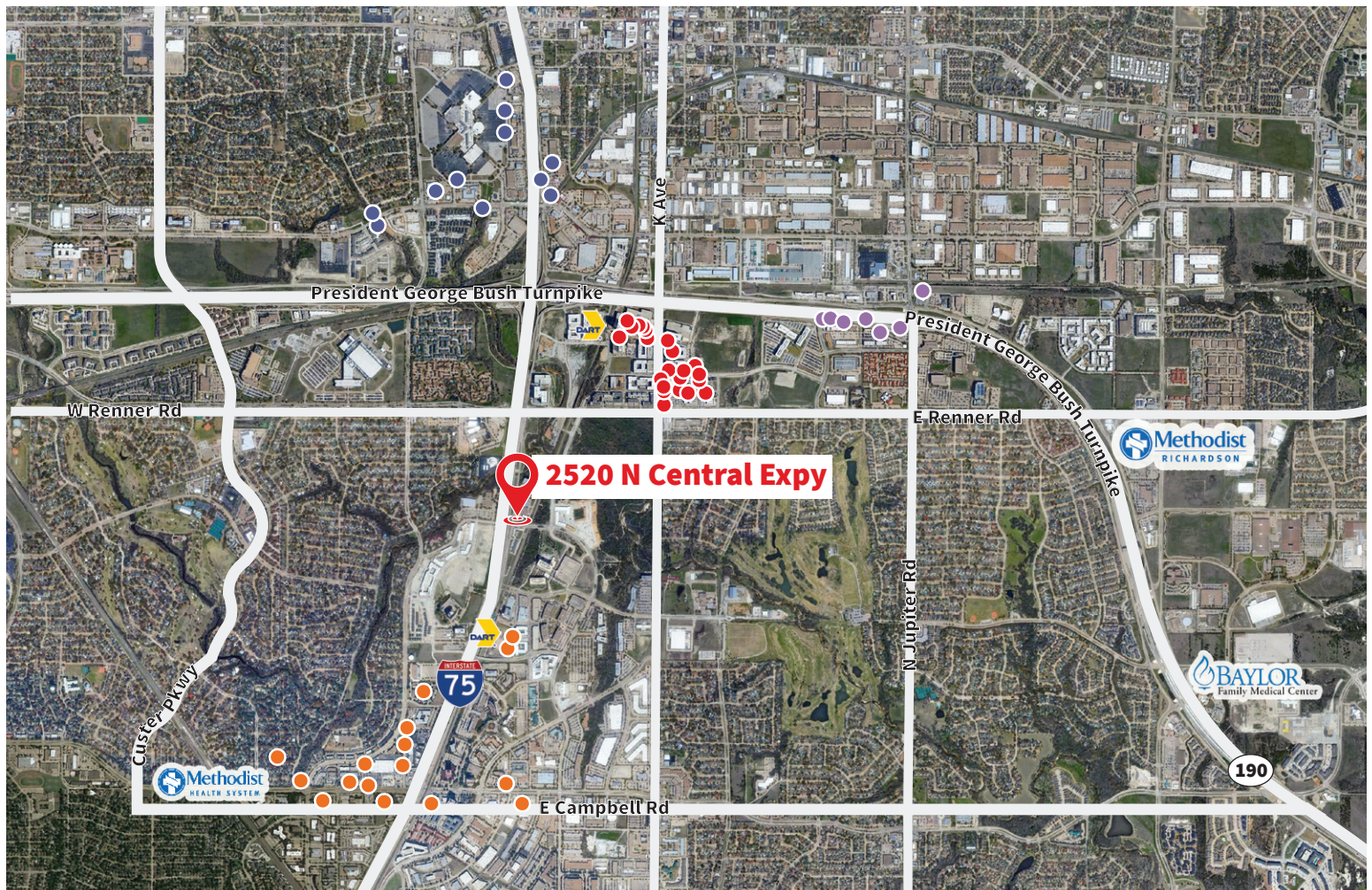


Property Highlights

- Prominent location and signage
- Central Expressway visibility
- Proximity to VA North Texas, Baylor Plano, Methodist Richardson Medical Center, and Medical Center of Plano
- Ample covered parking for patients and staff
- Great synergy between existing large Family Practice group in place
- DART Rail runs directly behind property
- Building signage available to tenants who meet certain requirements
- Local ownership and management

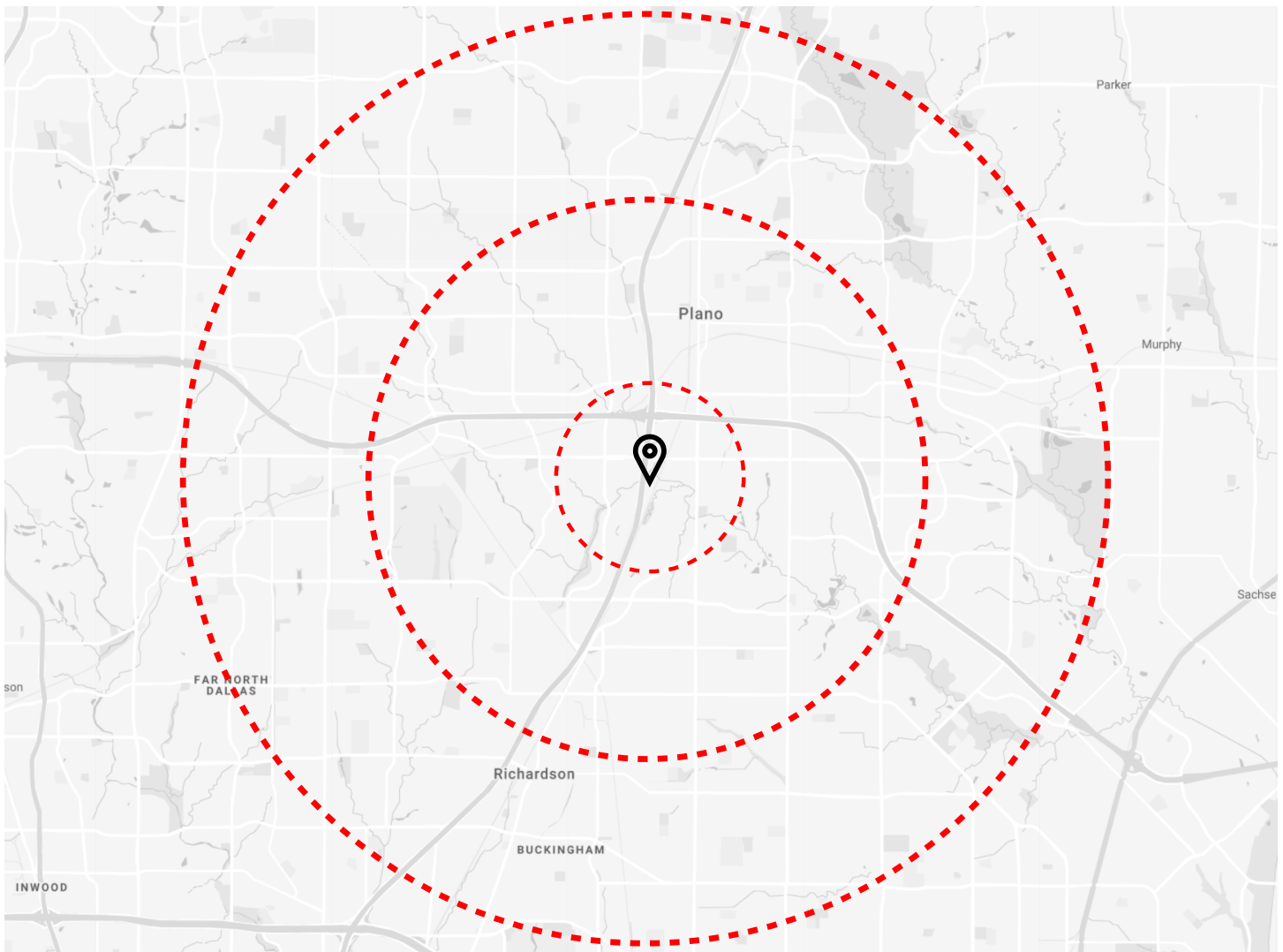
Availability





NEARBY AMENITIES

- Good Union Urban BBQ
- Fernando's Mexican Cuisine
- Edoko Sushi and Robata
- Char'd: Southeast Asian Kitchen
- Tricky Fish
- Jasper's Richardson
- Nestlé Toll House Café by Chip
- Coolgreens Richardson
- Edith's Neighborhood Bistro
- Dangki Fusion
- Starbucks
- Modern Market Eatery
- Piada Italian Street Food
- Chick-fil-A CityLine
- Fish City Grill
- Tri Tip Grill
- Super Chix
- Smashburger
- CVS
- Pei Wei
- Luna Grill
- Whole Foods Market
- FedEx Office Print & Ship Center
- Liberty Burger Richardson
- Thai's Thumbz Urban Kitchen
- Sweetwaters Coffee & Tea Shire Boulevard
- Silver Fox
- Hot Pancakes
- McDonald's
- Flying Fish
- Rodeo Goat
- Chick-fil-A
- Lima Taverna
- Great Wall Super Buffet
- Love & War in Texas
- El Fenix
- Olive Garden Italian Restaurant
- IHOP
- Office Depot
- Chipotle Mexican Grill
- Charles W. Eisemann Center for Performing Arts
- Porta Di Roma Italian Restaurant & Bar
- Hat Creek Burger Company
- Ali Baba Mediterranean Grill
- Cafe Brazil
- Kung Fu Tea
- Chick-fil-A
- Dimassi's Mediterranean Buffet
- Gold's Gym Richardson
- Nothing Bundt Cakes
- Chipotle Mexican Grill
- Starbucks
- Panera Bread
- First Watch
- Wendy's



DEMOGRAPHICS

1 Mile

3 Mile

5 Mile

\$85,805

Avg Household Income

\$72,224

Avg Household Income

\$72,641

Avg Household Income

6,017

Total Households

42,276

Total Households

129,307

Total Households

14,759

Total Population

108,777

Total Population

341,943

Total Population



For more information

Austin Barrett | austin.barrett@am.jll.com | 214 438 6420

Adam Hammack | adam.hammack@am.jll.com | 214 438 6543

Although information has been obtained from sources deemed reliable, neither Owner nor JLL makes any guarantees, warranties or representations, express or implied, as to the completeness or accuracy as to the information contained herein. Any projections, opinions, assumptions or estimates used are for example only. There may be differences between projected and actual results, and those differences may be material. The Property may be withdrawn without notice. Neither Owner nor JLL accepts any liability for any loss or damage suffered by any party resulting from reliance on this information. If the recipient of this information has signed a confidentiality agreement regarding this matter, this information is subject to the terms of that agreement. ©2020. Jones Lang LaSalle IP, Inc. All rights reserved.