



corner retail opportunity

# 9101 W Olympic Blvd

Beverly Hills

---

For Lease



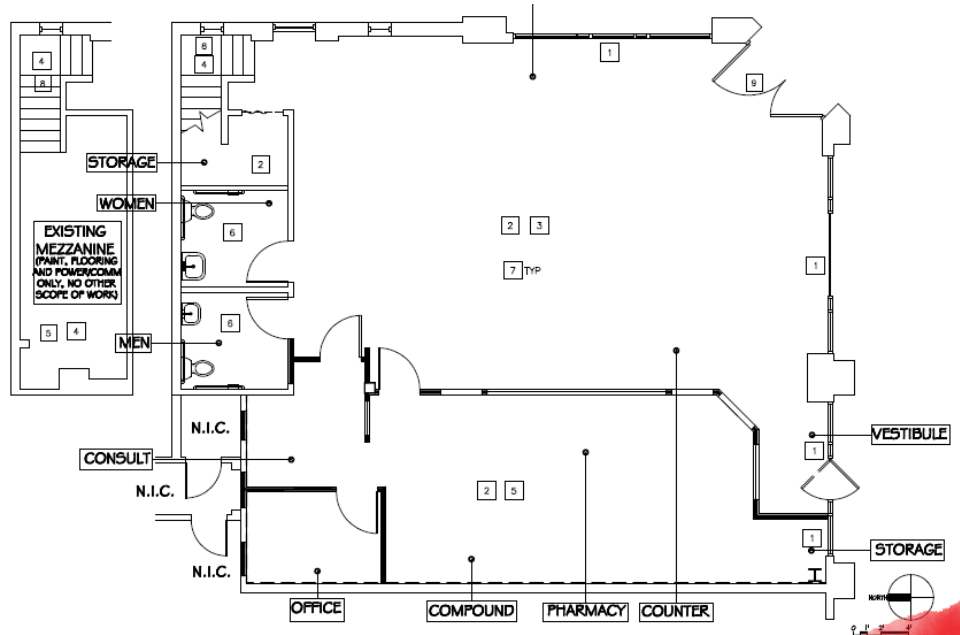
---

# Property Highlights

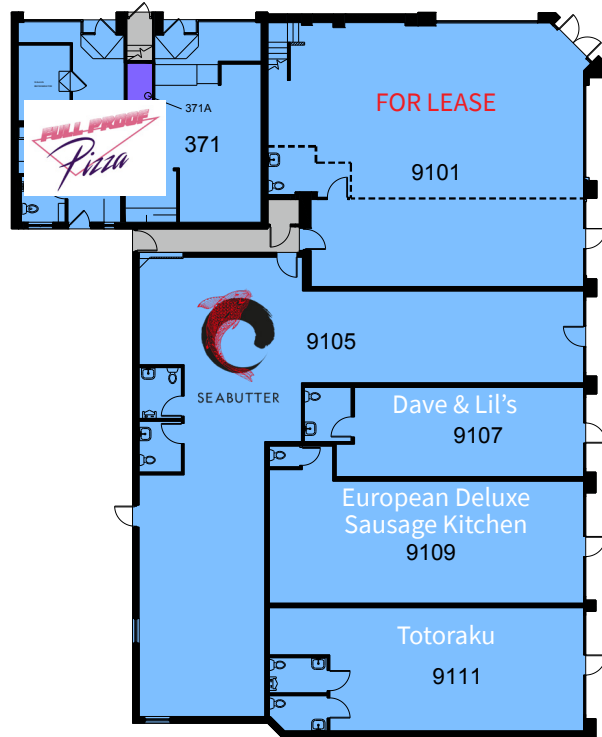
- **Rare endcap** retail location in Beverly Hills currently operated by a pharmacy
- **Surrounded** by schools, high-end residential, hotels and office buildings
- **Size:** 1,833 SF Ground  
160 SF Mezzanine
- **Price:** \$6.50psf, \$2.00 NNN



# Floor Plan



# Site Plan

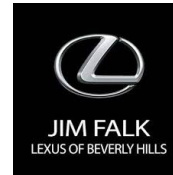


---

# Neighboring Tenants



*Dr. Sandwich™*



Sushi Sasabune  
Beverly Hills



**avalon** hotel  
BEVERLY HILLS



European Deluxe  
Sausage Kitchen

---

# Demographics

Within 2 mile radius

**129,892**

Total Population

**2.0**

Avg Household Size

**175,111**

Daytime Population

**\$157,758**

Avg Household Income

**40.1**

Median Age

**\$1.3M**

Median Home Value





Contact Us:

**Devin Klein**

Vice President

License #01471525

Tel: +1 310 595 3641

[Devin.Klein@am.jll.com](mailto:Devin.Klein@am.jll.com)

**Greg Briest**

Vice President

License #01949565

Tel: +1 310 595 3623

[Greg.Briest@am.jll.com](mailto:Greg.Briest@am.jll.com)

**Houman Mahboubi**

Executive Vice President

License #01450237

Tel: +1 310 595 3621

[Houman.Mahboubi@am.jll.com](mailto:Houman.Mahboubi@am.jll.com)



Jones Lang LaSalle Brokerage, Inc. License #01856260. Copyright © Jones Lang LaSalle IP, Inc. 2021 All rights reserved. All information contained herein is from sources deemed reliable; however, no representation or warranty is made to the accuracy thereof.