

GHP

O'HARE PLAZA

Plug & play, move-in ready space for your short or long-term needs

Suite 810 – 7,941 rsf
8725 West Higgins Road
Chicago, IL

- Immediate occupancy: Move-in ready conditions with fully sanitized workstations and carpet
- Suburban satellite office: A Chicago address with close proximity to numerous suburbs
- Social distancing:
 - Spacious, well-partitioned workstations
 - Heavily demised perimeter/interior private offices
 - Large, 14-person conference room
- Well-equipped breakroom: flexible in-office dining options
- Tenant guest convenience: direct elevator identity
- Concerns with public transportation? Abundant, covered parking for driving commuters
- Property health and awareness: onsite property management that actively adheres to COVID-19 guidelines

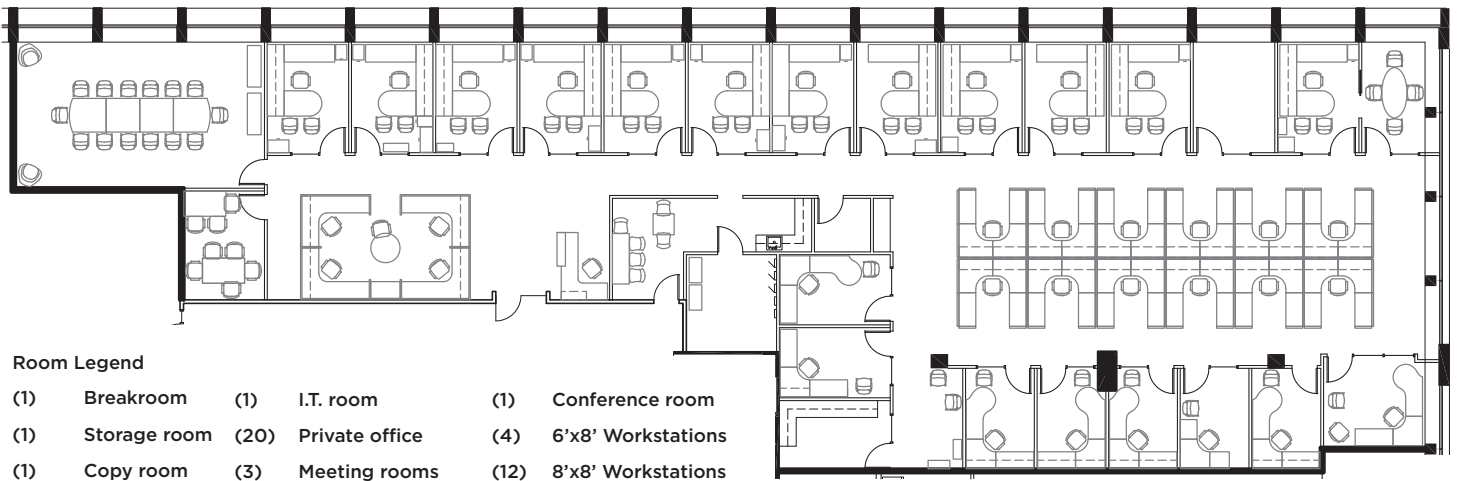




O'HARE PLAZA

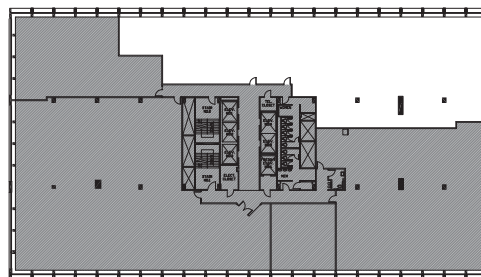
8725 West Higgins Road | Chicago, IL

Suite 810 | 7,941 RSF



Room Legend

- | | | |
|------------------|---------------------|-------------------------|
| (1) Breakroom | (1) I.T. room | (1) Conference room |
| (1) Storage room | (20) Private office | (4) 6'x8' Workstations |
| (1) Copy room | (3) Meeting rooms | (12) 8'x8' Workstations |



8th Floor Key Plan



Rick Benoy
 +1 773 304 4105
 rick.benoy@am.jll.com

Erica Rogers
 +1 773 632 1049
 erica.rogers@am.jll.com

Jeff Shay
 +1 773 858 1692
 jeff.shay@am.jll.com

