



10900 Seminole Blvd

Largo, FL 33778



Former Bank Branch

Reuse, Repositioning or Redevelopment Opportunity

- ±11,878 s.f. two-story freestanding building
- ±1.67 acres
- Zoning: C-2
- ±49 parking spaces

Contact

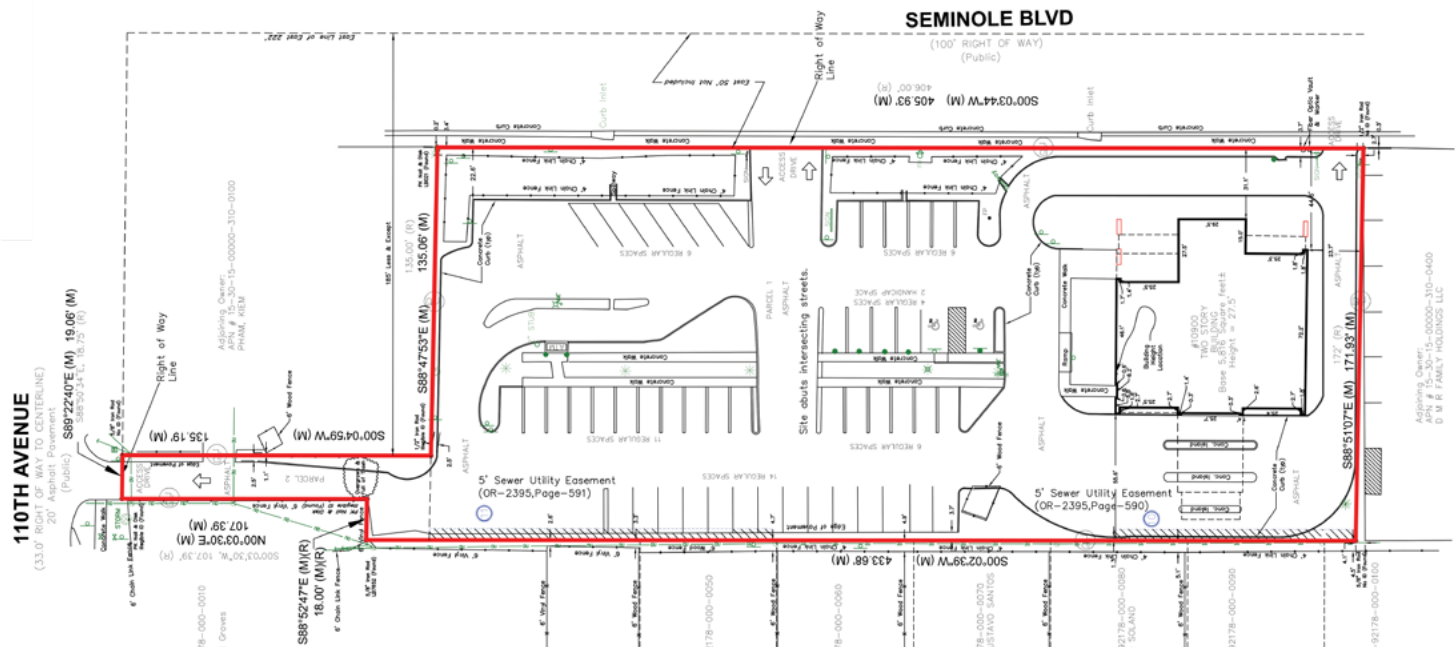


Billy Rodriguez
Senior Vice President
billy.rodriguez@jll.com
+1 407 443 3925

**ACCEPTING
BIDS NOW**

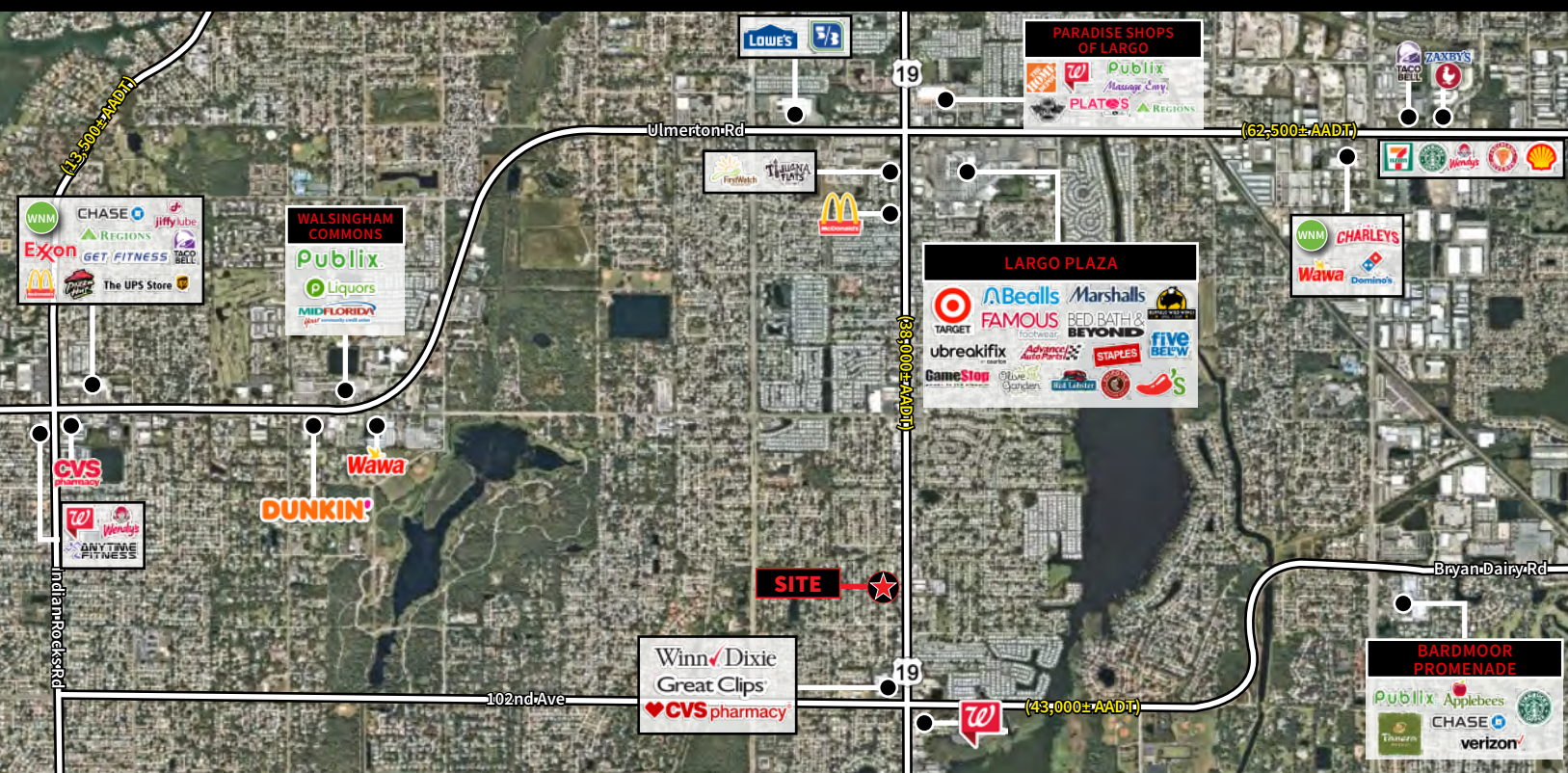
For details on this property and others available nationwide please visit:
www.BankingCentersForSale.com

Site Survey



Demographics

POPULATION			HOUSEHOLDS			MEDIAN AGE			MEDIAN HOUSEHOLD INCOME		
	2 MI.	42,446		2 MI.	19,885		2 MI.	55.0		2 MI.	\$61,738
	5 MI.	243,626		5 MI.	112,187		5 MI.	52.8		5 MI.	\$61,843
	10 MI.	626,281		10 MI.	289,770		10 MI.	49.5		10 MI.	\$61,485



Although information has been obtained from sources deemed reliable, JLL does not make any guarantees, warranties or representations, express or implied, as to the completeness or accuracy as to the information contained herein. Any projections, opinions, assumptions or estimates used are for example only. There may be differences between projected and actual results, and those differences may be material. JLL does not accept any liability for any loss or damage suffered by any party resulting from reliance on this information. If the recipient of this information has signed a confidentiality agreement with JLL regarding this matter, this information is subject to the terms of that agreement. ©2022, Jones Lang LaSalle IP, Inc. All rights reserved.

