

The background of the image is a dark gray topographic map with white contour lines. An orange rectangular border is positioned around the central text.

NOHO WEST





COMING SOON CONVENIENCE WITHOUT COMPROMISES

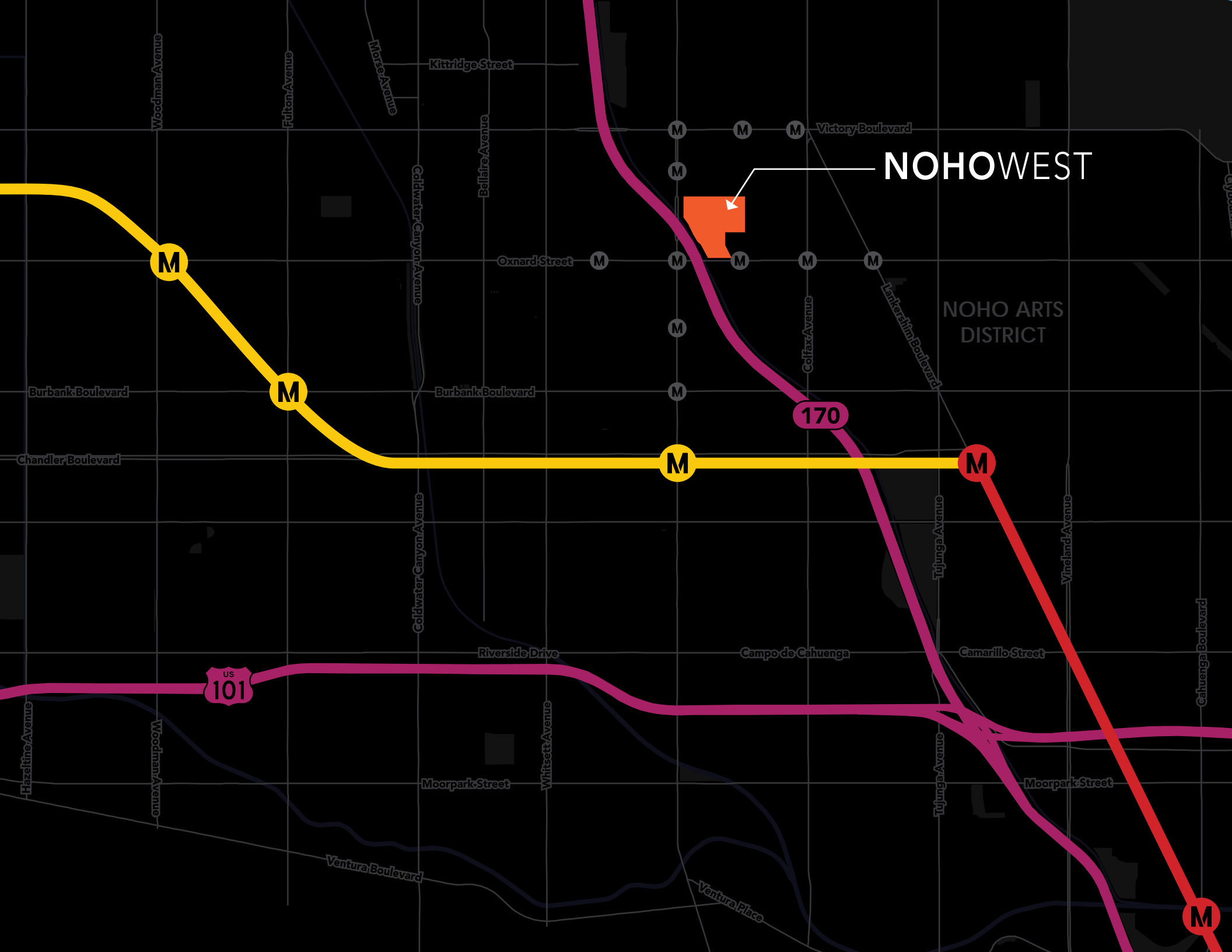
The waiting is over: North Hollywood businesses finally have a place of their own. NOHO West is the ideal spot to locate, offering convenience at every turn. Everything you need or want will soon be available in the amenity-rich work-live-play environment companies seek today. It's all right around the corner -- including a central shopping, dining and entertainment hub, specialty groceries, a fitness/health club, trendsetting retail shopping, restaurants and a luxury movie theater.





YOUR NEW OFFICE NOW CLOSER TO EVERYTHING

NOHO West brings everything home to your business, from morning coffee and business lunches to late night dining, all in one convenient local hub. You'll spend less time in traffic, giving you more time for the things that really matter. Amenities include more than 300,000 square feet of new retail stores and restaurants, a professional office tower and hundreds of multi-family residential units.



NOHOWEST

NOHO ARTS DISTRICT

170

US 101

A map of the NOHO West area in Los Angeles. The map features a grid of streets including Hollywood Way, San Fernando Boulevard, Orange Grove Avenue, Olive Avenue, Glenoaks Boulevard, San Fernando Boulevard, Western Avenue, Sonora Avenue, Main Street, Flower Street, North Brandeis Street, West Verdugo Avenue, West Olive Avenue, West Alameda Avenue, and Forest Lawn Drive. A light blue line representing the Metrolink Ventura Line runs diagonally from the top left to the bottom right, with a blue circle containing a white 'M' at its top left end and another blue circle containing a white 'M' at its intersection with Main Street. A red line representing the Metro Red line runs diagonally from the top left to the bottom right, parallel to the Metrolink line, and then curves south towards the bottom right. A yellow line representing the Metro Orange Bus Line runs horizontally across the bottom of the map. A pink circle with the number '5' and the word 'INTERSTATE' is located near the intersection of Main Street and Flower Street. A pink circle with the number '134' is located near the intersection of West Alameda Avenue and Forest Lawn Drive. The text 'BOB HOPE AIRPORT' is located in the top left corner. The text 'CONVENIENT ACCESS TO CLOSE-BY COMMUTING HUBS' is located in the middle left, enclosed in an orange border. Below this text is a paragraph describing the location of NOHO West. At the bottom left, there is a legend with three entries: 'Metrolink Ventura Line' with a light blue line segment, 'Metro Red line' with a red line segment, and 'Metro Orange Bus Line' with a yellow line segment.

M

BOB HOPE
AIRPORT

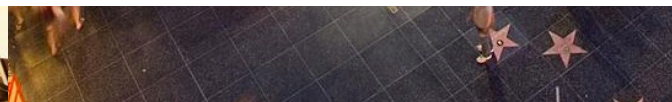
CONVENIENT ACCESS TO CLOSE-BY COMMUTING HUBS

Located in the heart of Los Angeles' vibrant entertainment capital, NOHO West is next door to Studio City, Toluca Lake, Universal City, Van Nuys and Sherman Oaks, and convenient to major freeways, Metro trains and bus lines.

Metrolink Ventura Line

Metro Red line

Metro Orange Bus Line





NORTH HOLLYWOOD **DROP BY AND YOU** **WILL STAY A WHILE**

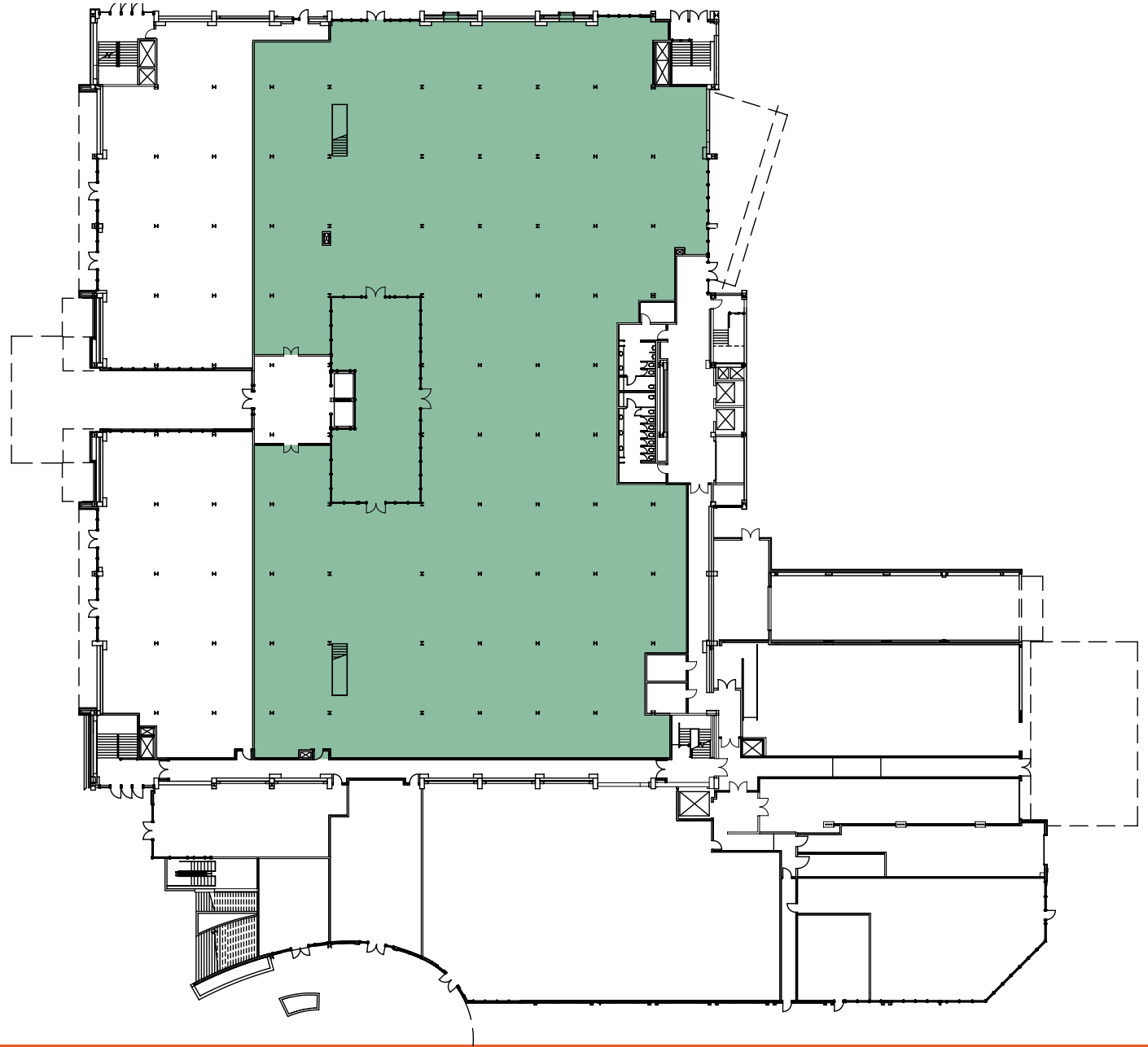
NOHO West offers a distinctively L.A. twist on Main Street. It's a trendy, accessible central shopping, dining and entertainment hub, conveniently located near Hollywood landmarks and many premier motion picture studios including Walt Disney Studios, Warner Brothers Studios, Universal Studios, CBS Studio Center and Burbank Studios.





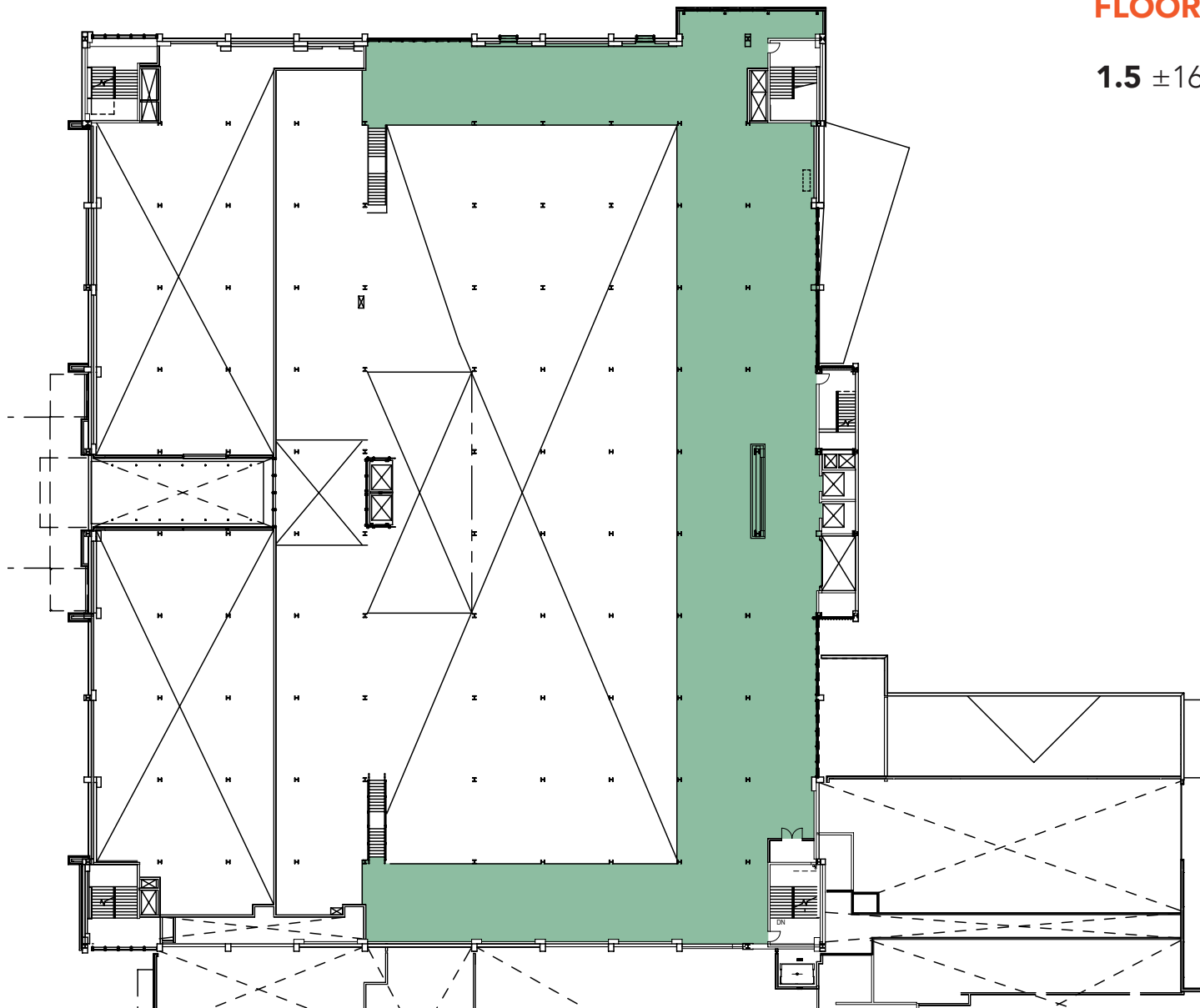
FLOORPLANS

1 ±41,340 SF



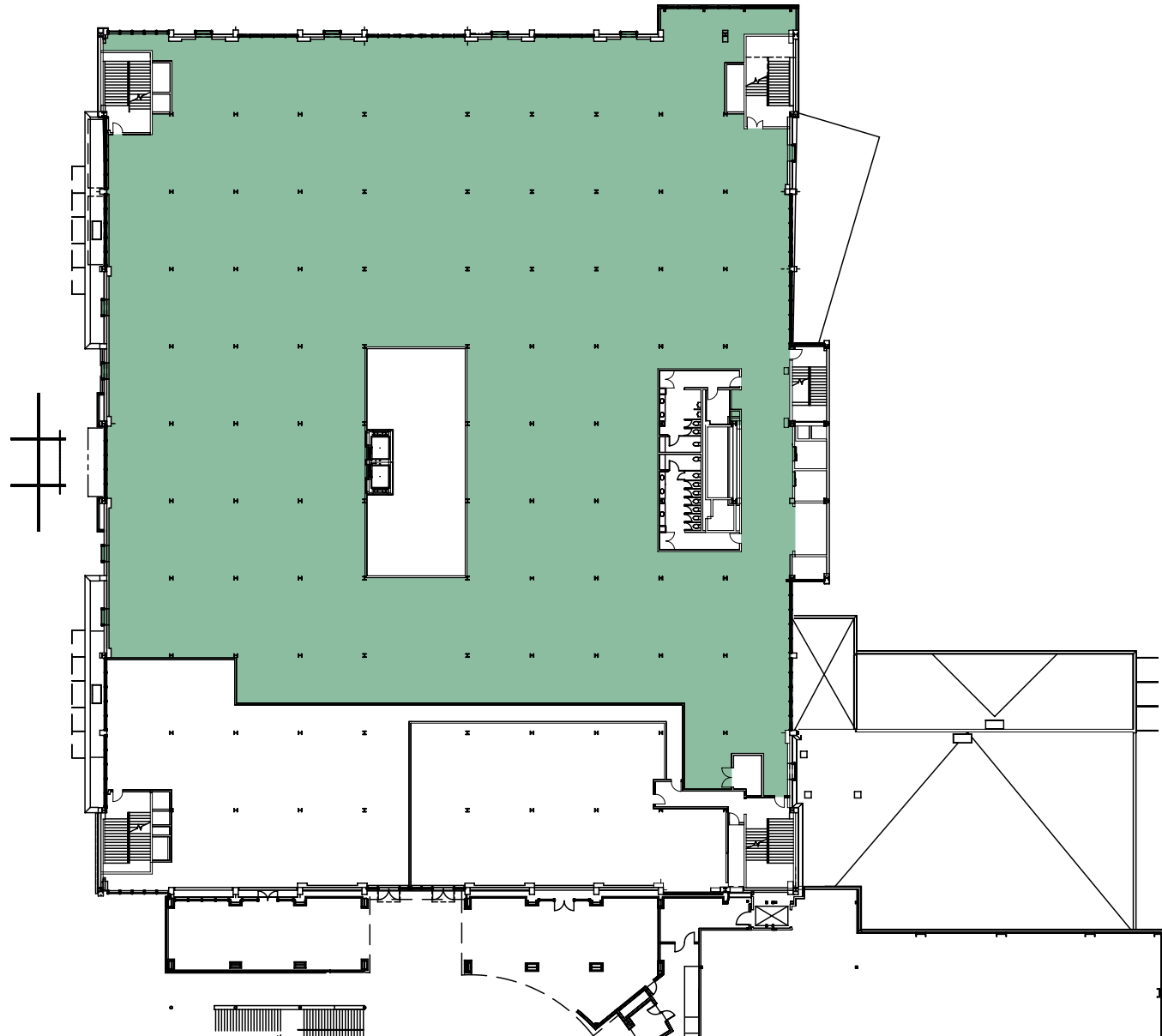
FLOORPLANS

1.5 ±16,851 SF



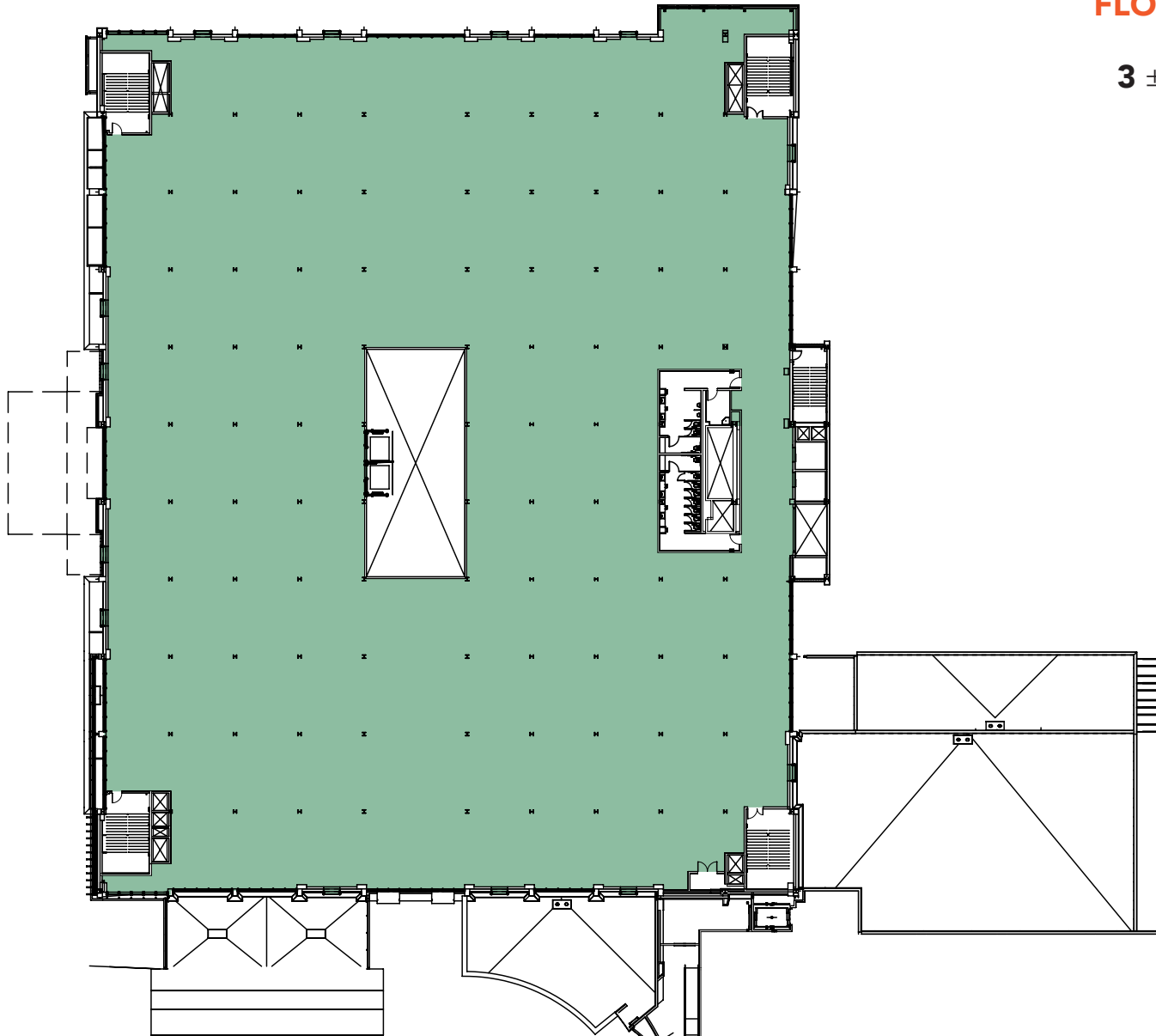
FLOORPLANS

2 ± 47,045 SF



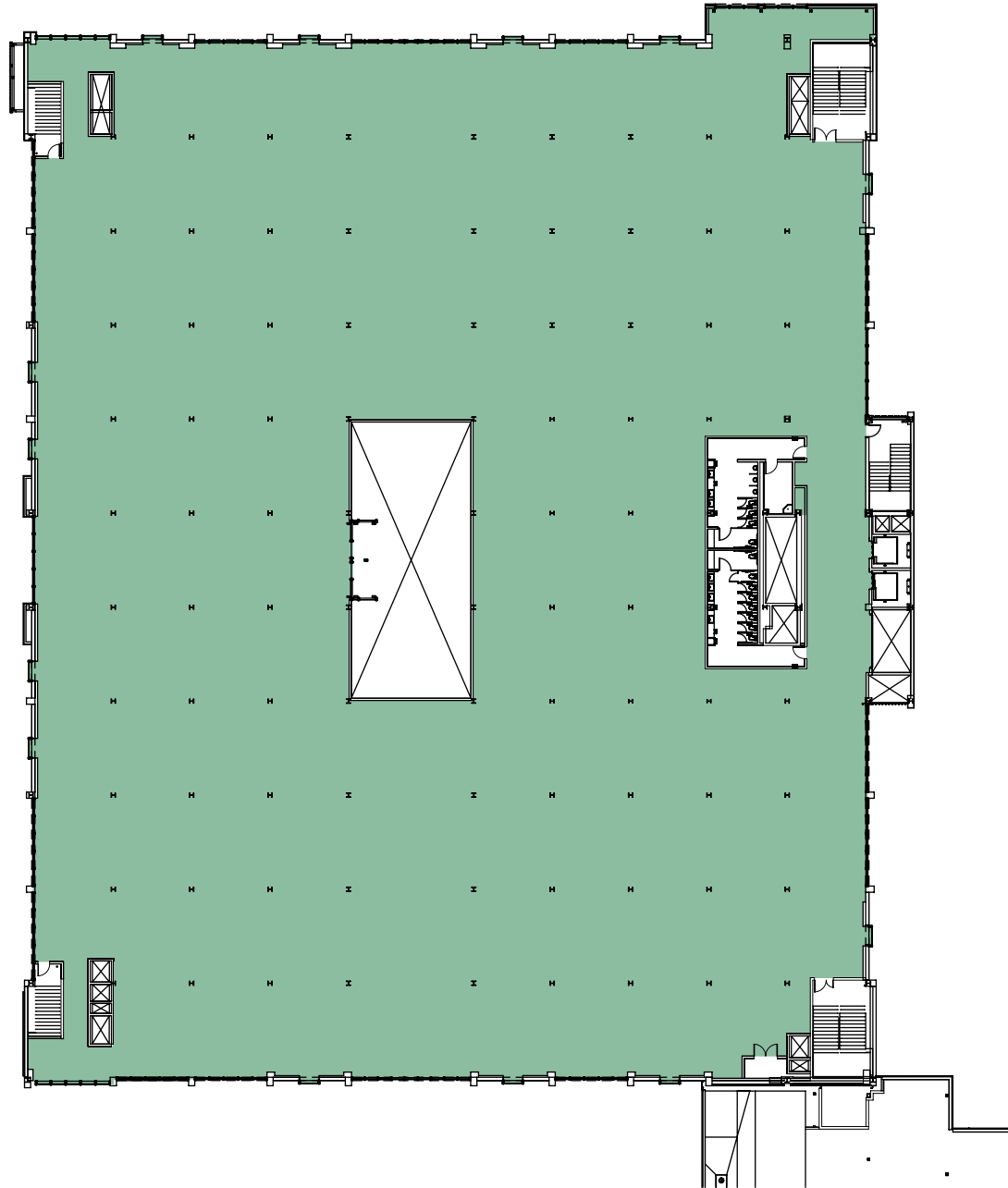
FLOORPLANS

3 ± 59,527 SF



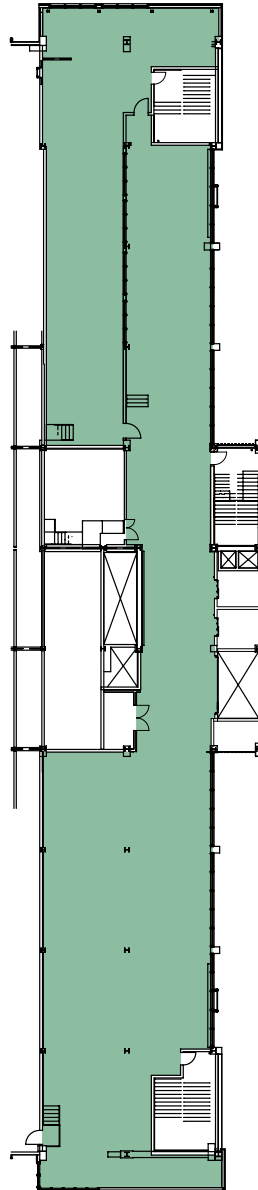
FLOORPLANS

4 ±60,099 SF



FLOORPLANS

4.5 ±10,655 SF



NOHO WEST



nohowest.com

Patrick Church

+1 213 239 6306

patrick.church@am.jll.com

Lic. #00943258

Josh Wrobel

+1 310 595 3648

josh.wrobel@am.jll.com

License #01237972

Brian Niehaus

+1 310 595 3824

brian.niehaus@am.jll.com

License #01836528

Anneke Greco

+1 213 239 6307

anneke.greco@am.jll.com

Lic. #01390030



MerloneGeier
Partners

GPI Companies