



For sublease

Toringdon 7 - Suite 125, 150 & 300
3,797 - 34,359 r.s.f. available

- Move in immediately! (LEX February 2030)
- Newly upfitted space with modern finishes inside Toringdon's newest building, T7
- Brand new Herman Miller furniture and state-of-the-art AV
- Multiple space options - partial 1st floor to full 3rd floor
- 4.0/1,000 parking (structured and surface)
- Fitness Center within park and walkable to restaurants and retail
- Rental rate negotiable

3540 Toringdon Way,
Charlotte NC

Jaime Boast
+1 703 201 5448
jaime.boast@jll.com

Bryan White
+1 704 724 6121
bryan.white@jll.com

toringdon7sublease.com



TORINGDON 7

3,797 to 34,359 s.f.



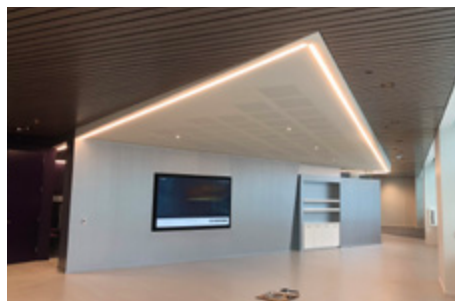
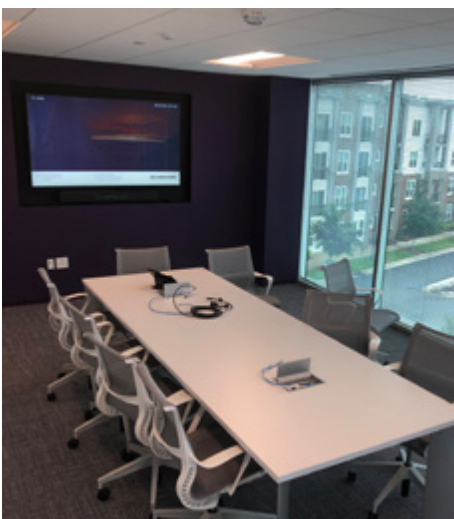
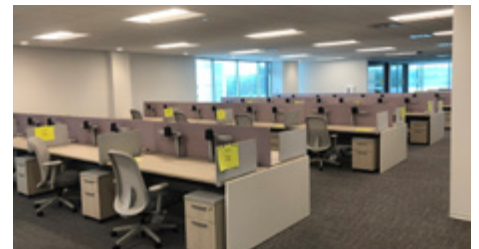
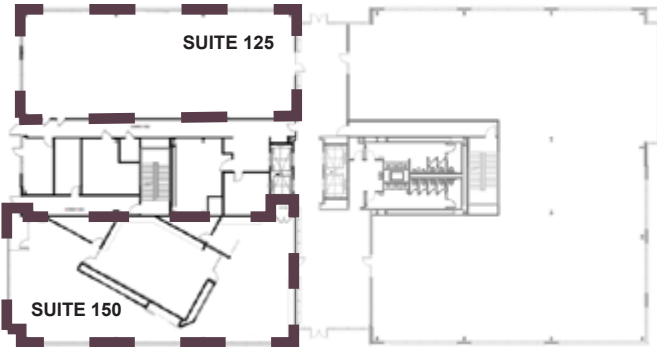
Suites can be leased together or separately

First Floor - 8,610 s.f.

Third Floor - 25,749 s.f.

Suite 125 - 3,797 s.f. (shell condition)
Suite 150 - 4,813 s.f. (built out)
HVAC / Not furnished

Full floor - 25,749 s.f. (built out)
HVAC / Furnished



Visit toringdon7sublease.com for photos, video & more!

DISCLAIMER

©2020 Jones Lang LaSalle IP, Inc. All rights reserved. All information contained herein is from sources deemed reliable; however, no representation or warranty is made to the accuracy thereof.

