

HopewellTM 43

4350 W. Lower Buckeye Road, Phoenix



Available

±32,394 SF

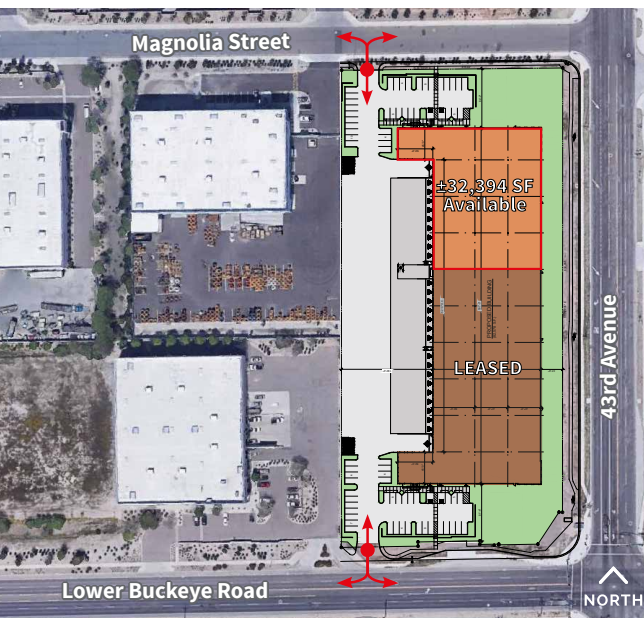
HopewellTM
DEVELOPMENT

JLL[®]

Jones Lang LaSalle Americas, Inc.
License #: CO508577000

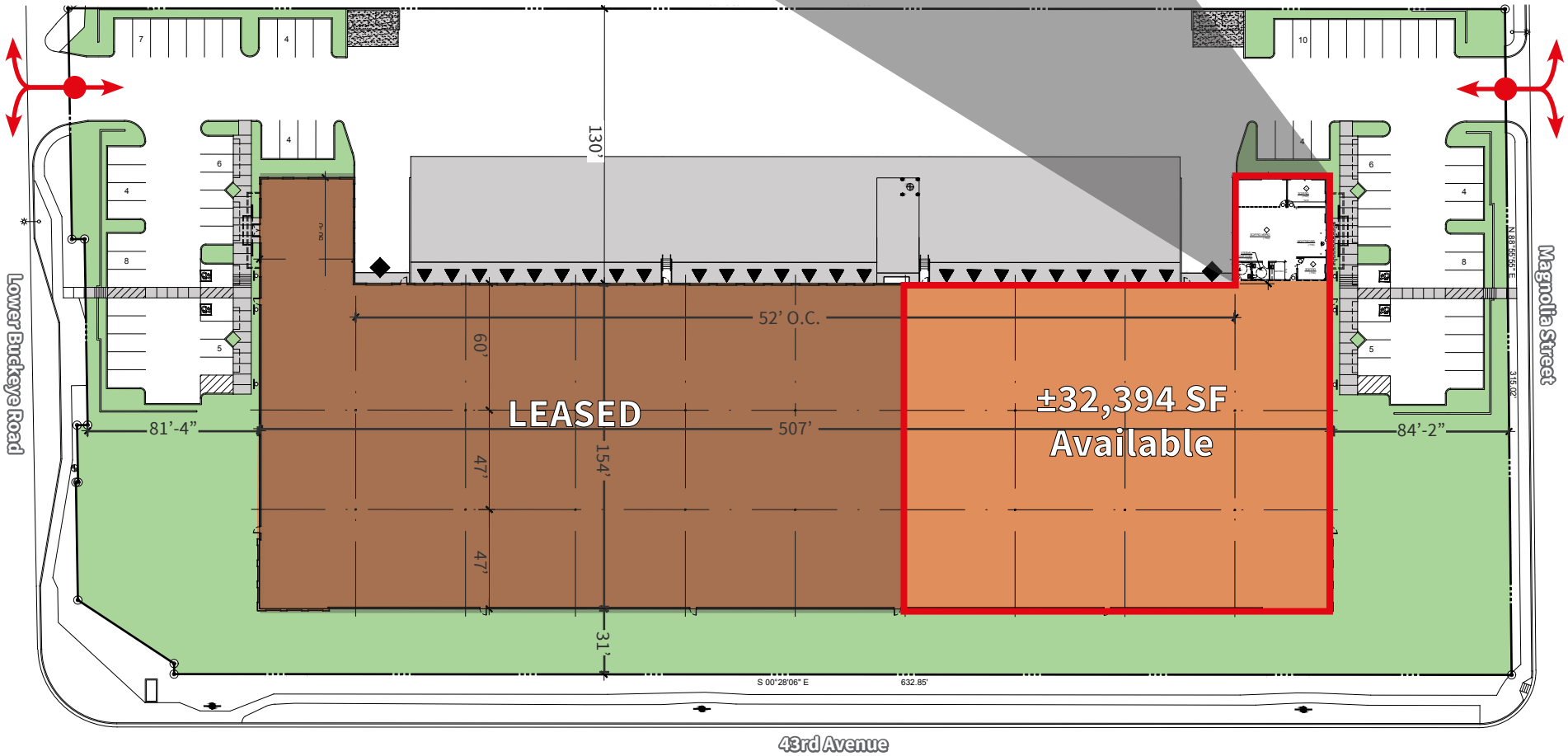
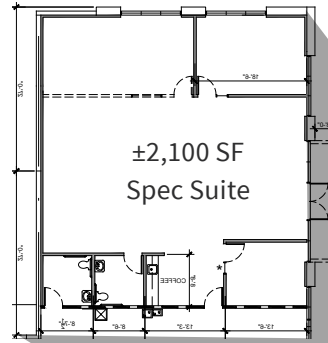
Building features

- ±82,578 SF building, ±32,394 SF available
- New ±2,100 SF spec suite
- 32' clear height
- 1,600 Amps, 277/480 V, 3 Phase power
- 9 dock high doors (9' x 10')
- 1 grade level door (12' x 14')
- 130' truck court
- Fully concrete truck court
- 37 auto parking spaces
- ESFR sprinkler system
- R-19 insulation below the roof deck
- A-1 Zoning, City of Phoenix
- 8.6 miles to Phoenix Sky Harbor
- 2.6 miles to the I-10 / 43rd Avenue and 2.1 miles to the Lower Buckeye / Loop 202 interchanges

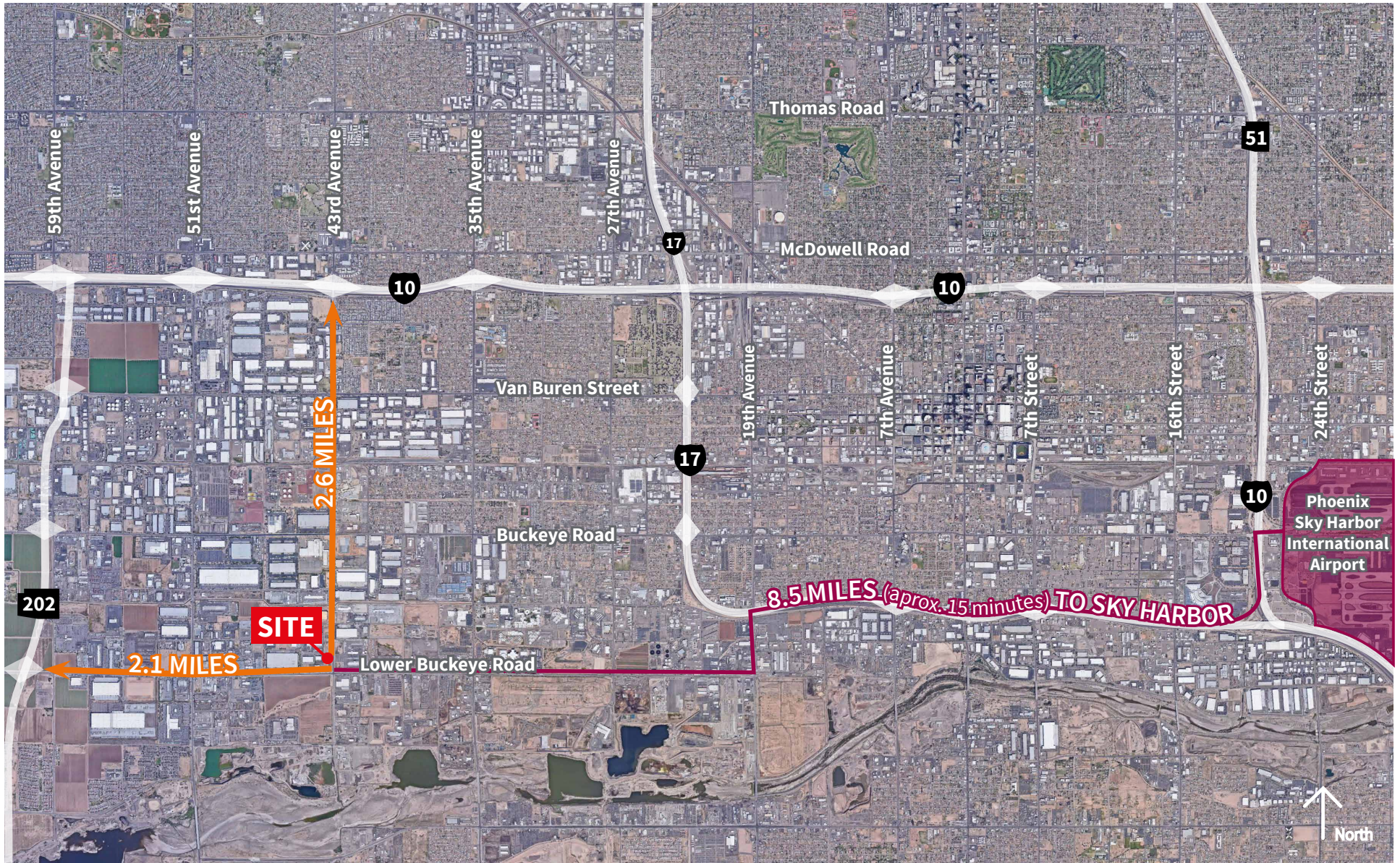


Site plan

4350 W. Lower Buckeye Road
±32,394 SF available



- ◆ grade level doors
- ▲ dock high doors



For additional information:

Pat Harlan, MCR, SLCR
 Managing Director
 +1 602 282 6298
 pat.harlan@am.jll.com

Kyle Westfall, SIOR
 Senior Vice President
 +1 602 282 6297
 kyle.westfall@am.jll.com

Although information has been obtained from sources deemed reliable, neither Owner nor JLL makes any guarantees, warranties or representations, express or implied, as to the completeness or accuracy as to the information contained herein. Any projections, opinions, assumptions or estimates used are for example only. There may be differences between projected and actual results, and those differences may be material. The Property may be withdrawn without notice. Neither Owner nor JLL accepts any liability for any loss or damage suffered by any party resulting from reliance on this information. If the recipient of this information has signed a confidentiality agreement regarding this matter, this information is subject to the terms of that agreement. ©2020 Jones Lang LaSalle IP, Inc. All rights reserved.

3131 East Camelback Road, Suite 400 | Phoenix, AZ 85016 | +1 602 282 6300 | jll.com/phoenix