

9000 KEYSTONE CROSSING



BUILDING DESCRIPTION

Year completed	1975
Size	10 stories, 137,615 square feet
County	Marion County
Zoning	C4, Community-Regional Commercial District
Renovated	2006

STRUCTURE

Typical floor	14,000 square feet
Ceiling height	Slab-to-slab 12'6"
	Finished 12' on first floor, 8'6" typical
	First floor: 10' and remaining floors at approximately 8'4"

TRANSPORTATION

Highway	Immediate access to I-465 and Keystone Avenue
Airport	24 miles to Indianapolis International Airport
Parking	547 surface

ELEVATORS / DOCK

Passenger	Three
Freight	One
Loading dock	Yes

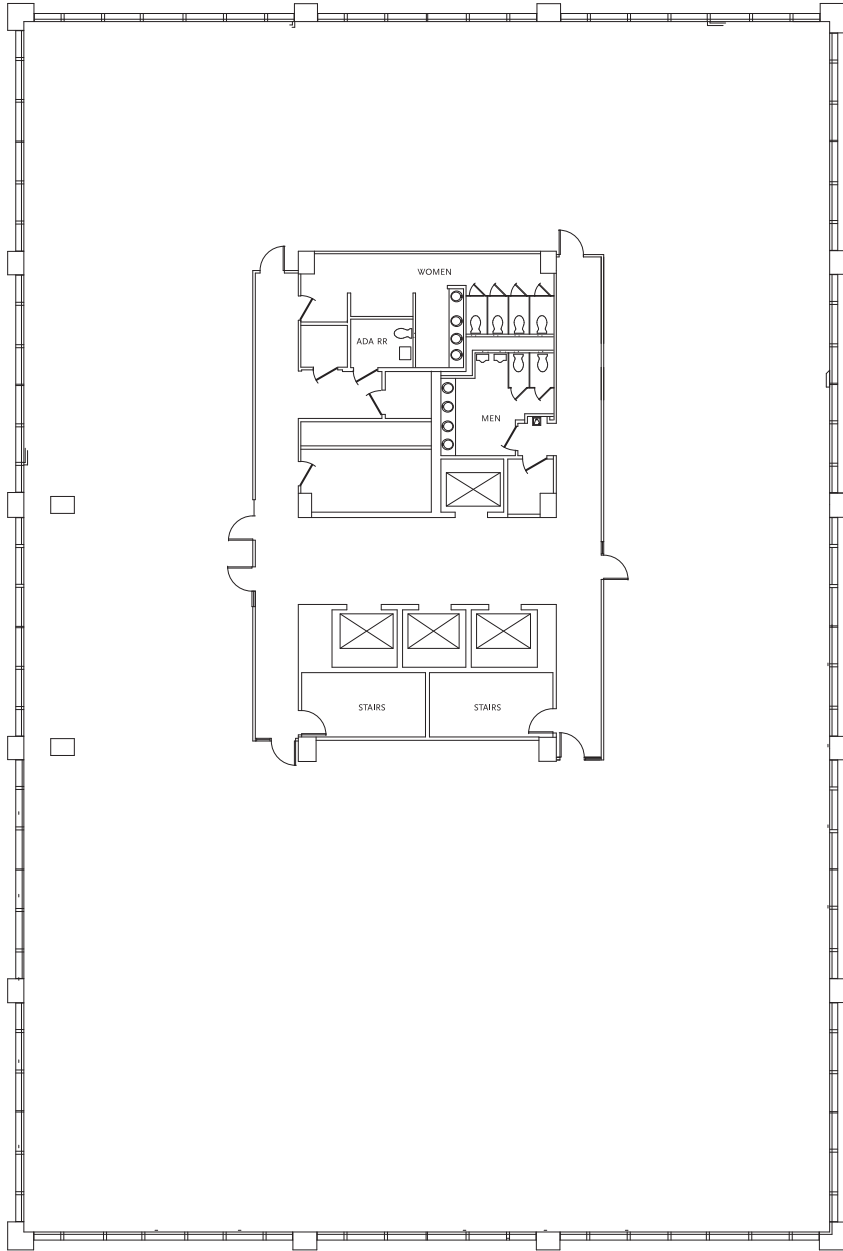
BUILDING SYSTEMS

HVAC	Closed loop system with individual heat pumps
Electrical	3 phase, 480/277/120 volts
Fire / life safety	Notifier AFP-200
Security	Sonitrol electronic access system
Fiber optics	Fiber "Lit" building Comcast cable

BUILDING TEAM

Owner	M&J Wilkow
Property Manager	M&J Wilkow
Original architect	Wright, Porteous & Lowe/Bonar
Leasing contact	John R. Robinson, JLL +1 317.810.7172 Abby Zito, JLL +1 317.810.7173





9000 Keystone Crossing

Typical floorplan