

 11000 CORPORATE
CENTRE



FOR LEASE

FOR LEASING INFORMATION:
713 888 4099

SCOTT FIKES:
SCOTT.FIKES@AM.JLL.COM

MATT PRUITT:
MATT.PRUITT@AM.JLL.COM

CHRISTIAN CANION:
CHRISTIAN.CANION@AM.JLL.COM



BUILDING FACTS



88,000 RSF
CONTIGUOUS
AVAILABLE



EASY INGRESS/
EGRESS
TO BELTWAY 8



6/1,000
PARKING



11000 CORPORATE CENTRE DRIVE
HOUSTON, TX 77041

- 101,039 RSF Building Total
- 88,394 Contiguous Available
- Divisible from 10,000 SF
- 6/1,000 Parking
- Easy Ingress/Egress to Beltway 8
- Building Signage Available

 [TAKE 360 VIRTUAL TOUR](#) 



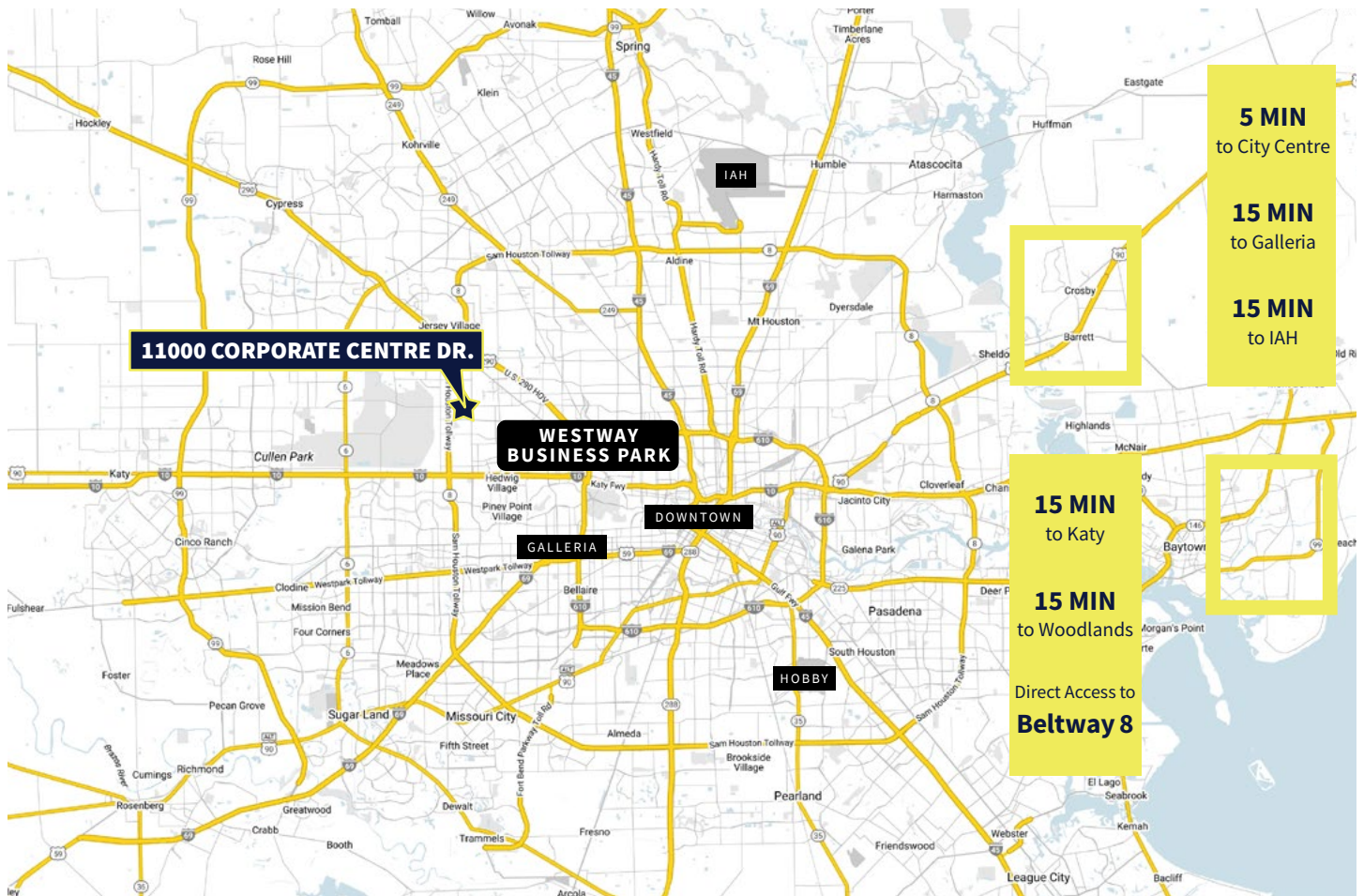
Building Information

- 88,394 RSF contiguous available
- Divisible from 10,000 SF
- 101,039 RSF Building Total
- 362,452 RSF in Agellan Park
- 5.10/1,000 Parking
- Easy Ingress/Egress to Beltway Lake 8
- Can accommodate +/- 500 seats
- In Deed restricted business park - Westway Park
- Efficient floor plate
- Building signage available
- Strong ownership
- Onsite building engineer
- 10' ceilings

Amenities Nearby

- 51,941 RSF floorplate
- Numerous restaurants within 5 minutes
- Adjacent to Pinto Business Park
- LA Fitness within 5 minutes
- Three (3) Banks within 5 minutes
- Six (6) Daycares within 2 minutes
- Restaurants options within 5 minutes:
Chic Fil A, Taco Cabana, Backyard Café and Grill, Escalante's, la Madeleine, Brio, Cyclone Anaya's, Eddie V's, Grimaldi's, Chipotle, Niko Niko's, Murphy's Deli, Pappadeaux's, Rudy's BBQ

DRIVE TIMES MAP



Ingress
Egress

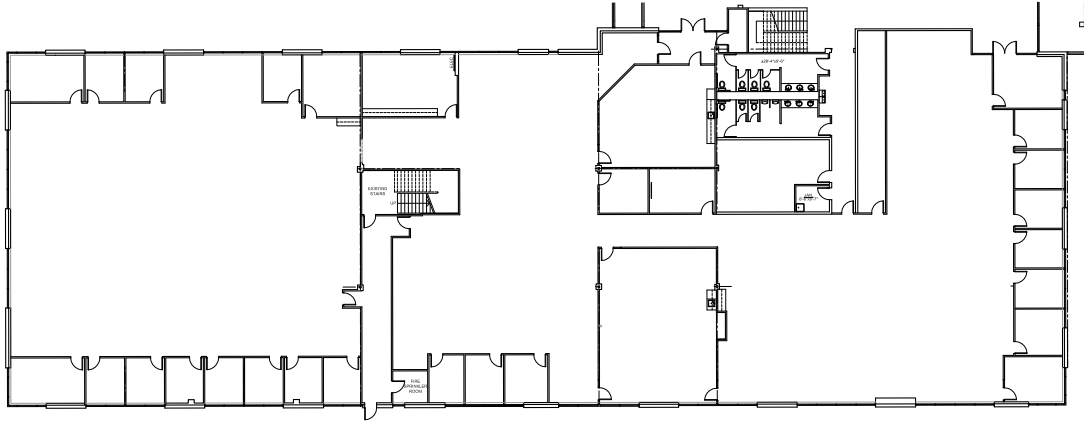
1 Direct access from Beltway 8

2 Access from Beltway 8 with Westway Park Blvd connection

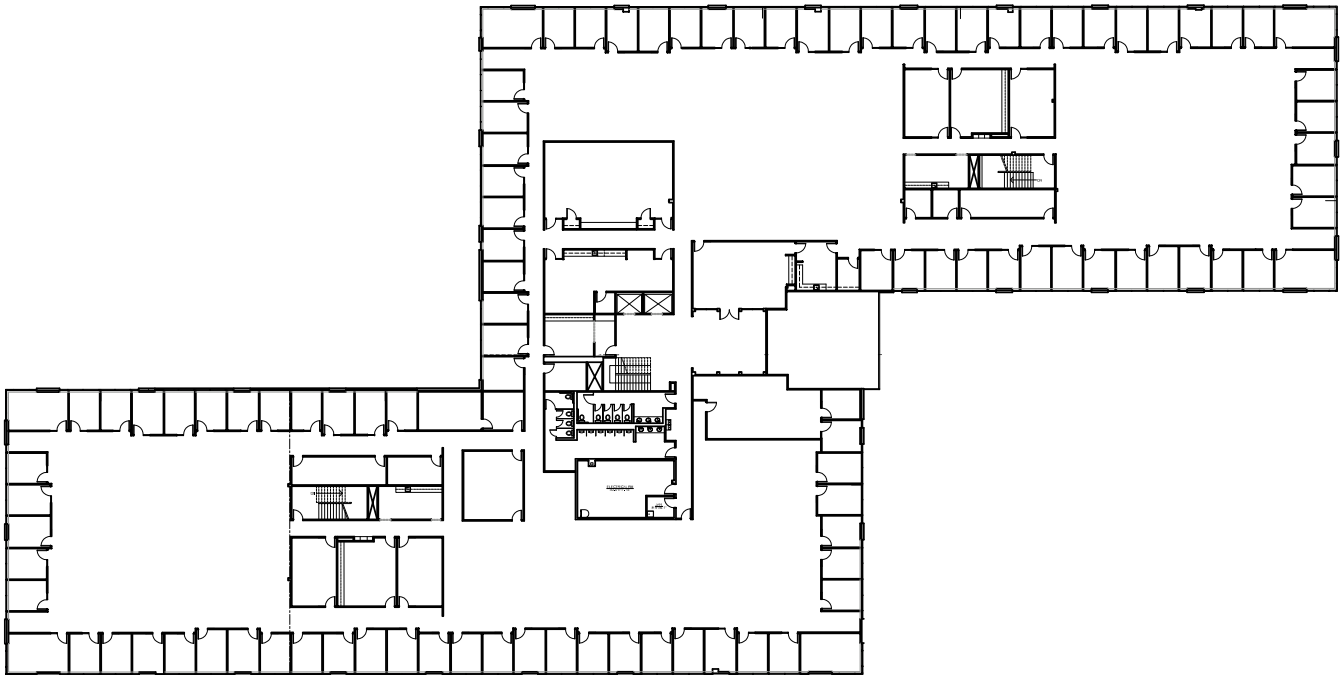
3 Access from Beltway 8 and Clay Road with Westway Park Blvd connection



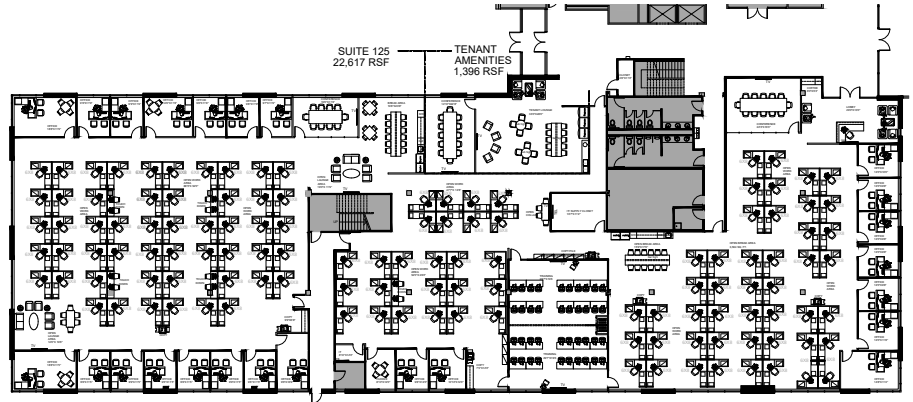
SUITE 125  **24,013 RSF Available**



SUITE 200  **51,941 RSF Available**

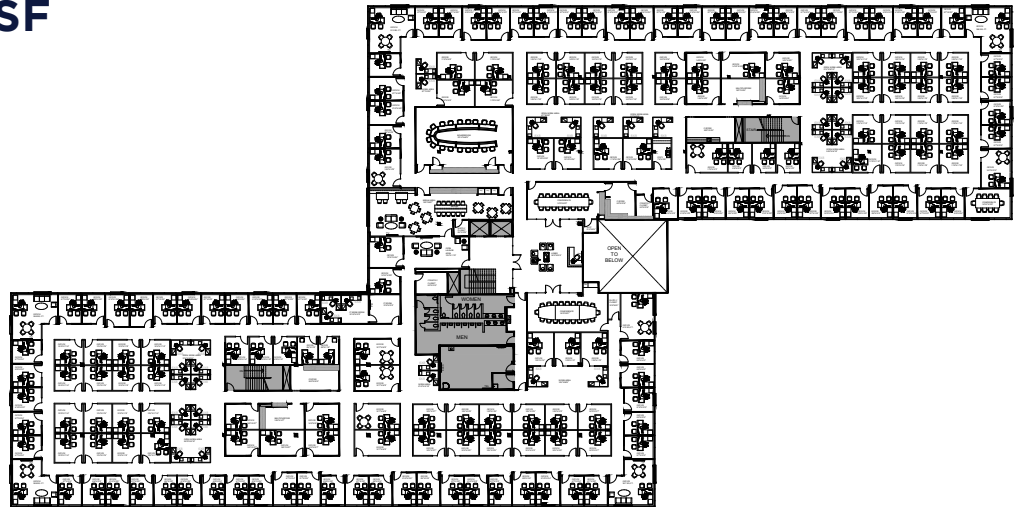


SUITE 125 □ **22,617 RSF**
PROPOSED LAYOUT
± 150 SEATS

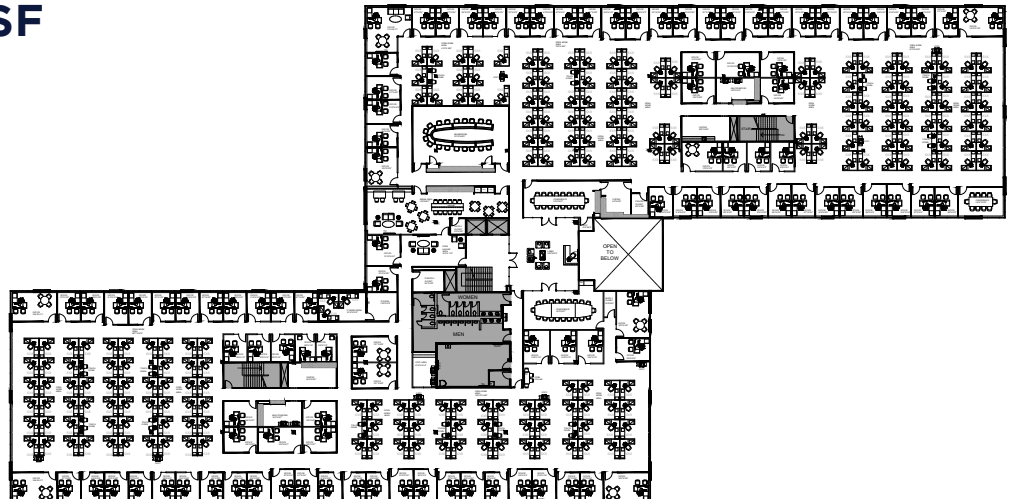


- | | |
|--|---|
| <p>SUITE 125</p> <ul style="list-style-type: none"> 1- LOBBY 1- COFFEE 2- BREAK AREAS 1- LARGE CONFERENCE 1- MEDIA CONFERENCE 24- OFFICES 2- TRAINING ROOMS 6- COPY AREAS 2- IT ROOM 2- SUPPLY CLOSETS 125- KIBO CUBES 5- TOUCH DOWN 1- OPEN COLLAR 2- LOUNGE AREAS | <p>TENANT AMENITIES</p> <ul style="list-style-type: none"> 1- LOUNGE AREA 1- BREAK AREA 1- LARGE CONFERENCE |
|--|---|

STE.200 □ **51,914 RSF**
CLOSED LAYOUT
± 225 SEATS



STE.200 □ **51,914 RSF**
OPEN LAYOUT
± 300 SEATS



AMENITIES MAP



CORPORATE NEIGHBORS





11000 CORPORATE CENTRE



**TAKE 360
VIRTUAL TOUR**

FOR LEASING INFORMATION:

713 888 4099

SCOTT FIKES:
SCOTT.FIKES@AM.JLL.COM

MATT PRUITT:
MATT.PRUITT@AM.JLL.COM

CHRISTIAN CANION:
CHRISTIAN.CANION@AM.JLL.COM