



For Sublease

±7,319 SF Available at the Old Post Office

815 Olive Street | St. Louis, MO 63101

Jones Lang LaSalle Americas, Inc., a licensed real estate broker in 48 states





Suite entrance

Availability

- **±7,319 SF** office available
- 5 private offices
- Approximately 30 cube/open desk spaces
- Kitchen/break area
- Conference room
- Sublease term through February 28, 2026
- **Rate:** \$14.50/SF, full service

Property highlights

- 157,134 SF total building size
- On-site property management
- 24-hour security
- Parking garage adjacent to the property
- Convenient highway access to I-64/US-40 and I-70/I-55/I-44
- Close proximity to public transit
- Other tenants include the St. Louis Public Library, Lindenwood University, and Focus St. Louis

Area amenities



Dining



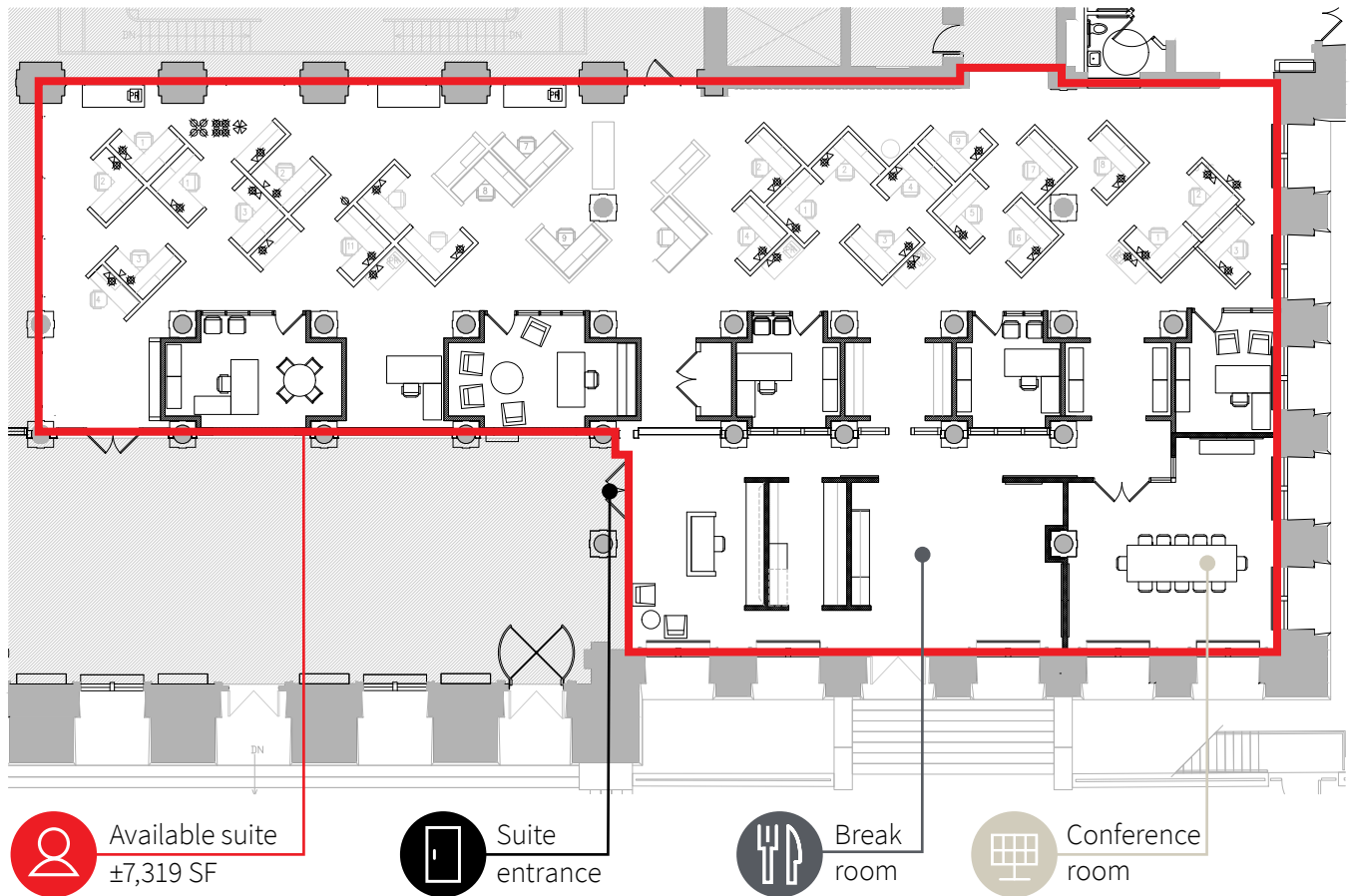
Entertainment



Hotels

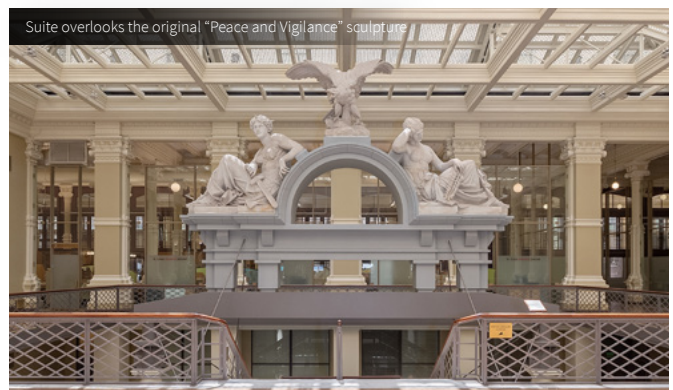
Floor plan

1st floor

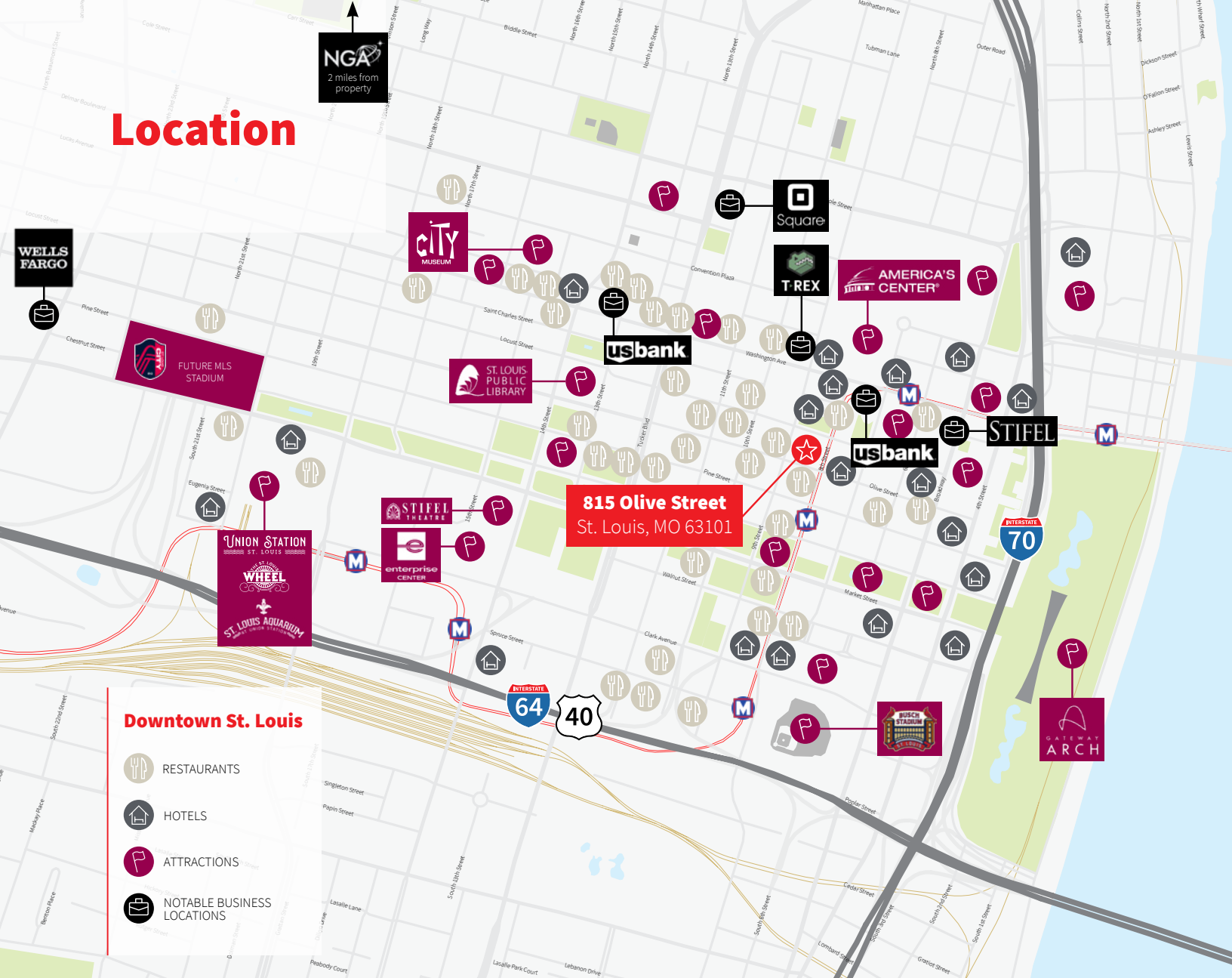


Building history

Constructed in 1884 and redeveloped in 2006, this National Historic Landmark was designed by architect Alfred Mullett in the French Second Empire style. The building originally housed the federal offices administering the post-Civil War expansion westward, the Eighth Circuit federal court and the federal district court. It now serves as a thriving office building.



Location



Contact

David Biales, CCIM

+1 314 261 7368
david.biales@am.jll.com

Stephen Lordo

+1 314 338 2089
stephen.lordo@am.jll.com

+1 314 338 2080
jll.com/st-louis

Jones Lang LaSalle Americas, Inc.,
a licensed real estate broker in 48 states



DISCLAIMER Although information has been obtained from sources deemed reliable, neither Owner nor JLL makes any guarantees, warranties or representations, express or implied, as to the completeness or accuracy as to the information contained herein. Any projections, opinions, assumptions or estimates used are for example only. There may be differences between projected and actual results, and those differences may be material. The Property may be withdrawn without notice. Neither Owner nor JLL accepts any liability for any loss or damage suffered by any party resulting from reliance on this information. If the recipient of this information has signed a confidentiality agreement regarding this matter, this information is subject to the terms of that agreement. ©2022. Jones Lang LaSalle IP, Inc. All rights reserved.