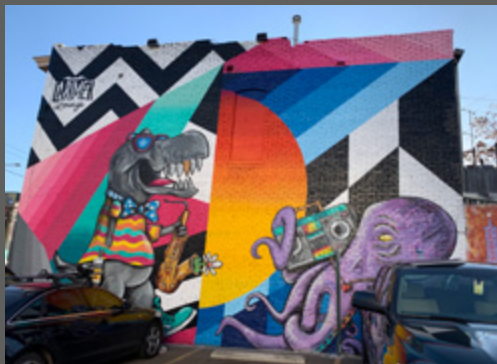
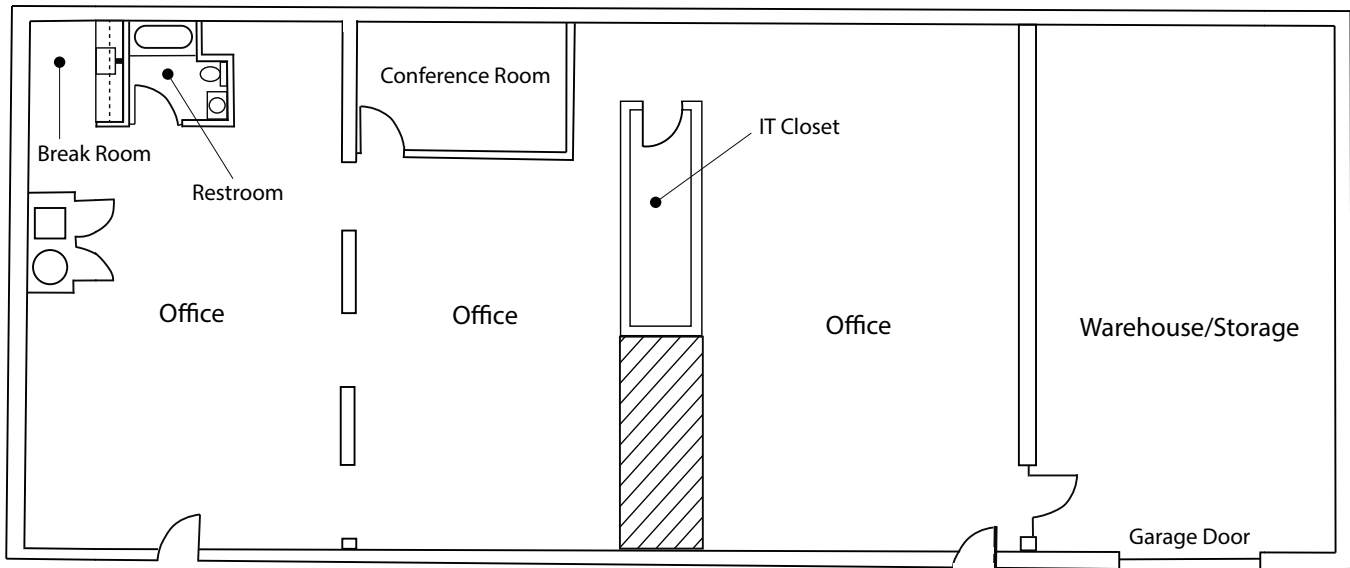




2737
LARIMER

URBAN OFFICE. CREATIVE FOCUS.





LARIMER ST

2737 LARIMER
IS A 15,490 SF
OFFICE BUILDING
LOCATED IN
THE AMENITY-
RICH RINO ART
DISTRICT

BUILDING HIGHLIGHTS

- Suite A: 3,000 SF of open/creative office
 - 1,000 SF garage with roll-up door
- Exposed brick and timber construction
- 13' high ceilings with spiral ductwork
- Central RiNo location, 1 block from Denver Central Market
- Dedicated entrance and restroom with shower
- 2:1,000 parking ratio



FOOD + DRINKS

Denver Central Market
First Draft Taproom/Kitchen
Park Burger RiNo
Osaka Ramen
Barcelona Wine Bar
Stowaway Kitchen
Work & Class
Super MegaBien
Los Chingones
Billy's Gourmet Hot Dogs
HI Tide Poke
Crema Coffee House
Port Side
Cart-Driver
Uchi Denver

ENTERTAINMENT + SHOPPING

Voicebox Karaoke Lounge
Nocturne
Larimer Lounge
Topo Designs
FICE
Jiberish
Digitiqe Denver

FITNESS + WELLNESS

720 Athletics Denver
The Barre Code
Avalanche Performance and Fitness
BIG Power Yoga
Ashtanga Yoga Denver

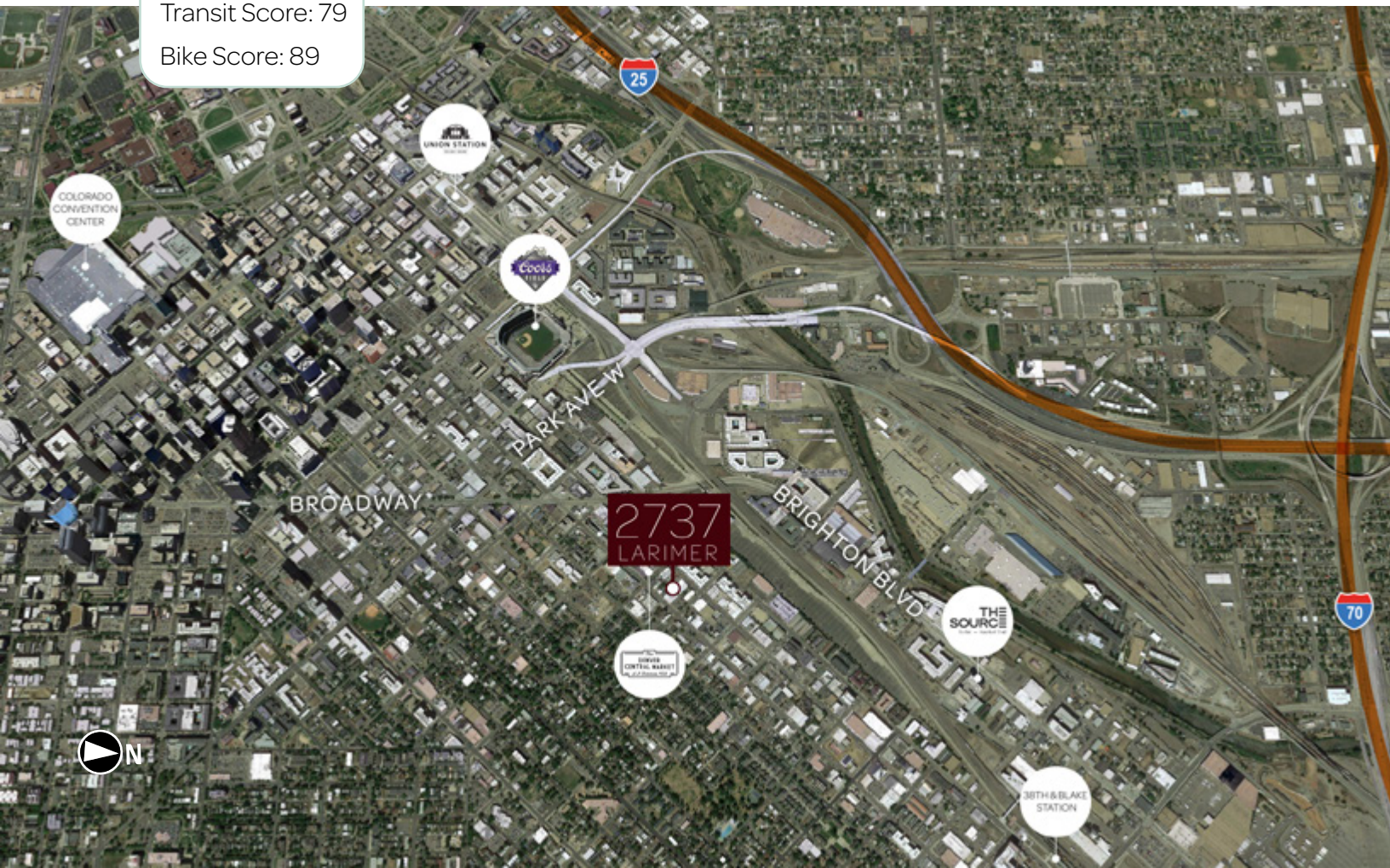


Walk Score®

Walk Score: 93

Transit Score: 79

Bike Score: 89



2737
LARIMER

FOR LEASING INFORMATION:

JAMES ROUPP

+1 303 217 7947

james.roupp@am.jll.com

BO PITTO

+1 303 260 6529

bo.pitto@am.jll.com



Jones Lang LaSalle Brokerage, Inc.

© 2020 Jones Lang LaSalle IP, Inc. All rights reserved. All information contained herein is from sources deemed reliable; however, no representation or warranty is made to the accuracy thereof.