

13950

Panay Way

Marina Del Rey | For Lease

Iconic Restaurant Location



DEVIN KLEIN
Vice President, Retail
Lic #01471525
+1 310 595 3641
Devin.Klein@am.jll.com

GREG BRIEST
Vice President, Retail
Lic #01949565
+1 310 595 3623
Greg.Briest@am.jll.com

HOUMAN MAHBOUBI
Executive Vice President, Retail
Lic #01450237
+1 310 595 3621
Houman.Mahboubi@am.jll.com


us.jll.com/retail

Property Highlights

- » Rare restaurant opportunity for lease on the water in Marina Del Rey
- » Large parking lot for customers and employees
- » Minutes away from the beach and surrounded by high end luxury retailers, restaurants, and housing

Size: **5,000 SF**

Rent: **Available Upon Request**

Availability: **Immediate**

DEVIN KLEIN
Vice President, Retail
Lic #01471525
+1 310 595 3641
Devin.Klein@am.jll.com

GREG BRIEST
Vice President, Retail
Lic #01949565
+1 310 595 3623
Greg.Briest@am.jll.com

HOUMAN MAHBOUBI
Executive Vice President, Retail
Lic #01450237
+1 310 595 3621
Houman.Mahboubi@am.jll.com


us.jll.com/retail

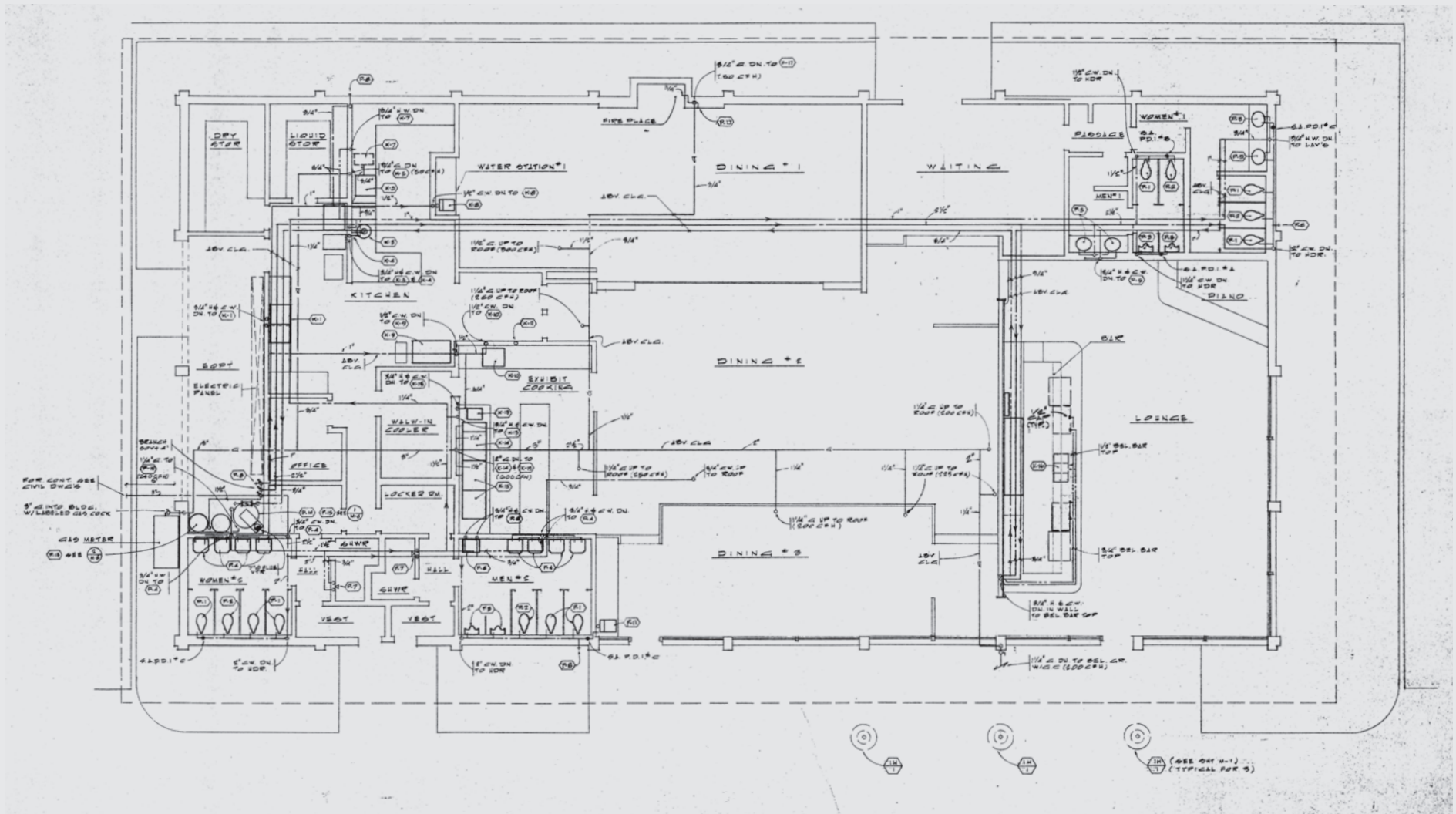


DEVIN KLEIN
Vice President, Retail
Lic #01471525
+1 310 595 3641
Devin.Klein@am.jll.com

GREG BRIEST
Vice President, Retail
Lic #01949565
+1 310 595 3623
Greg.Briest@am.jll.com

HOUMAN MAHBOUBI
Executive Vice President, Retail
Lic #01450237
+1 310 595 3621
Houman.Mahboubi@am.jll.com


us.jll.com/retail



DEVIN KLEIN
 Vice President, Retail
 Lic #01471525
 +1 310 595 3641
 Devin.Klein@am.jll.com

GREG BRIEST
 Vice President, Retail
 Lic #01949565
 +1 310 595 3623
 Greg.Briest@am.jll.com

HOUMAN MAHBOUBI
 Executive Vice President, Retail
 Lic #01450237
 +1 310 595 3621
 Houman.Mahboubi@am.jll.com



ERWIN eggslut
 tocaya groundswell

rag & bone BLUE STAR
 NEW YORK
 Daniel Wellington adidas
 Robert Graham LE LABO
 GRASSE - NEW YORK

VINCE. JAMES PERSE
 LOS ANGELES
 illesteva BLUE BOTTLE COFFEE SALT & STRAW
 avocado THE BUTCHER'S DAUGHTER TOMS

STONE WALKER SCOPA FRAME
 NIGHT-MARKET Sahn uzumaki R
 LODGE BREAD HATCHET HALL
 MADE IN L.A. USA EST. 2015

VENICE WHEELER MERCEDES CMO-STONE
 Simmy's Starbucks THE PIER HOUSE

Ritz Carlton
 Marina Del Rey
 THE RITZ-CARLTON

Waterside at Marina Del Rey
 drybar L'OCCITANE EN PROVENCE californias
 havaianas SUGARFISH BY SUSHI NOZAMA SEPHORA
 M.FREDKIC Sweetgreen EVERYTHING BUT WATER

Marina Pier 44
 TRADER JOE'S HIHO CHEESEBURGER
 UOVO KAZU NORI

★ SUBJECT PROPERTY

DEVIN KLEIN
 Vice President, Retail
 Lic #01471525
 +1 310 595 3641
 Devin.Klein@am.jll.com

GREG BRIEST
 Vice President, Retail
 Lic #01949565
 +1 310 595 3623
 Greg.Briest@am.jll.com

HOUMAN MAHBOUBI
 Executive Vice President, Retail
 Lic #01450237
 +1 310 595 3621
 Houman.Mahboubi@am.jll.com

JLL
 us.jll.com/retail

13950
Panay Way



DEVIN KLEIN
Vice President, Retail
Lic #01471525
+1 310 595 3641
Devin.Klein@am.jll.com

GREG BRIEST
Vice President, Retail
Lic #01949565
+1 310 595 3623
Greg.Briest@am.jll.com

HOUMAN MAHBOUBI
Executive Vice President, Retail
Lic #01450237
+1 310 595 3621
Houman.Mahboubi@am.jll.com


us.jll.com/retail