

Capitalize **your office space**

15,744 SF AVAILABLE FOR LEASE OR SALE

1801 E. CARY
STREET



For more information, contact:

Kaylin Phillips

Associate

+1804 802 6125

kaylin.phillips@am.jll.com

Jimmy Appich

Managing Director

+1804 200 6420

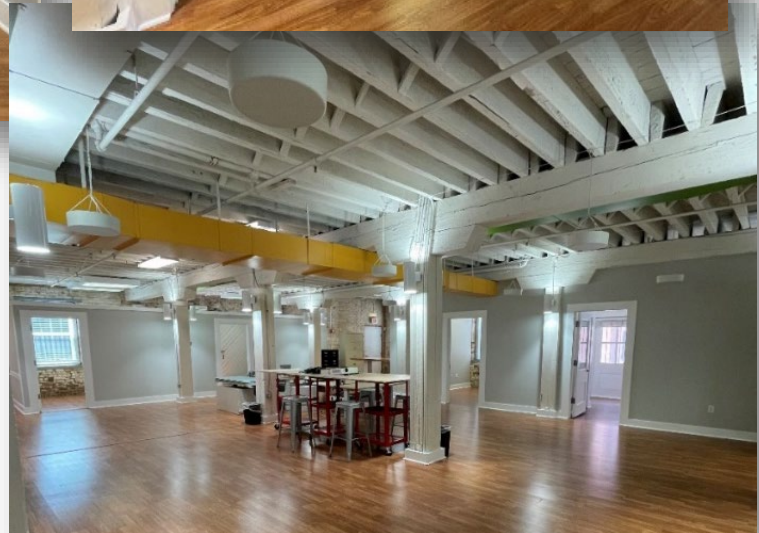
jimmy.appich@am.jll.com



*Achieve
Ambitions*

Property OVERVIEW

- ❖ 15,744 SF Total
- ❖ 3 spaces available at 5,248 SF each
- ❖ 3 stories high
- ❖ Located in the heart of downtown Richmond
- ❖ Walkable to many restaurants, coffee shops, hotels and attractions
- ❖ 48 onsite parking spaces



The SPECIFICS

| | |
|---------------------|--|
| Zoning | B-3 |
| Floors | Three floors |
| Condition | Excellent |
| Construction | Masonry and timber |
| Exterior | Brick |
| Walkability | Many amenities within walking distance |
| Features | Excellent location and visibility Tremendous glass line |
| Layout | Balanced layout of offices and open configuration |



WELCOME TO THE NEIGHBORHOOD!



SHOCKOE BOTTOM SUBMARKET

17M S.F.
OFFICE

3,357 UNITS
APARTMENTS

868,558 S.F.
RETAIL

42
RESTAURANTS/BARS

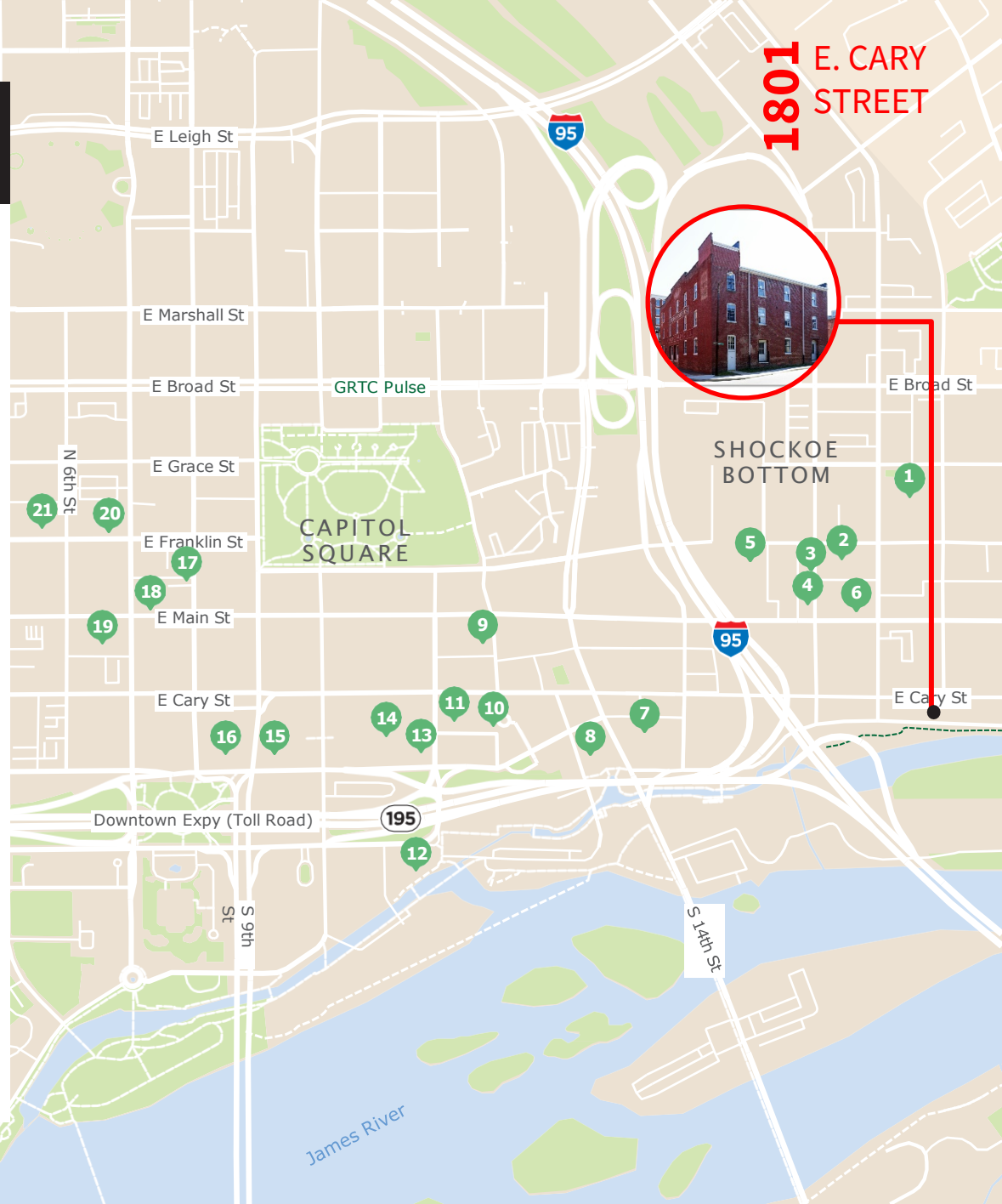
4
BREWERIES

10
COFFEE SHOPS

7
GROCERY/MARKET

6
FITNESS

2,308
HOTEL ROOMS



Restaurants & Bars

1. Ironclad Coffee
2. Tio Pablo
3. LuLu's
4. Hot Chick
5. Havana59
6. Miyabi Sushi
7. The Hard Shell
8. Southern Railway Taphouse
9. Soul Taco
10. Urban Farmhouse
11. The Tobacco Company
12. Casa Del Barco
13. Starbucks
14. The Pit and The Peel
15. Chopt Salad Co.
16. Potbelly Sandwich Shop
17. Sefton Coffee Company
18. Kabana Rooftop
19. Capital Ale House
20. Bremono Beans Imports
21. Hotel Greene

For more information, contact:

Kaylin Phillips

Associate

+1804 802 6125

kaylin.phillips@am.jll.com

Jimmy Appich

Managing Director

+1804 200 6420

jimmy.appich@am.jll.com



*Achieve
Ambitions*