

585 Second Avenue

Northwest corner of Second Avenue & 32nd Street

Former Duane Reade Available for Sublease

Space

Ground Floor: 3,868 sf

Frontage

42 feet

Possession

Immediate

Term

Through 11/1/2022

Asking Rent

\$165,000 PA gross

Former Duane Reade store #14197

Neighbors



Bank



CHIPOTLE
MEXICAN GRILL



Demographics

Radius	'19 Pop	Total HH	Avg. HHI
.25 Mile	24,261	14,419	\$156,511
.5 Mile	75,309	42,522	\$167,885
1 Mile	171,210	95,542	\$177,966



Michael Riley

+1 212 812 5901

Michael.Riley@am.jll.com

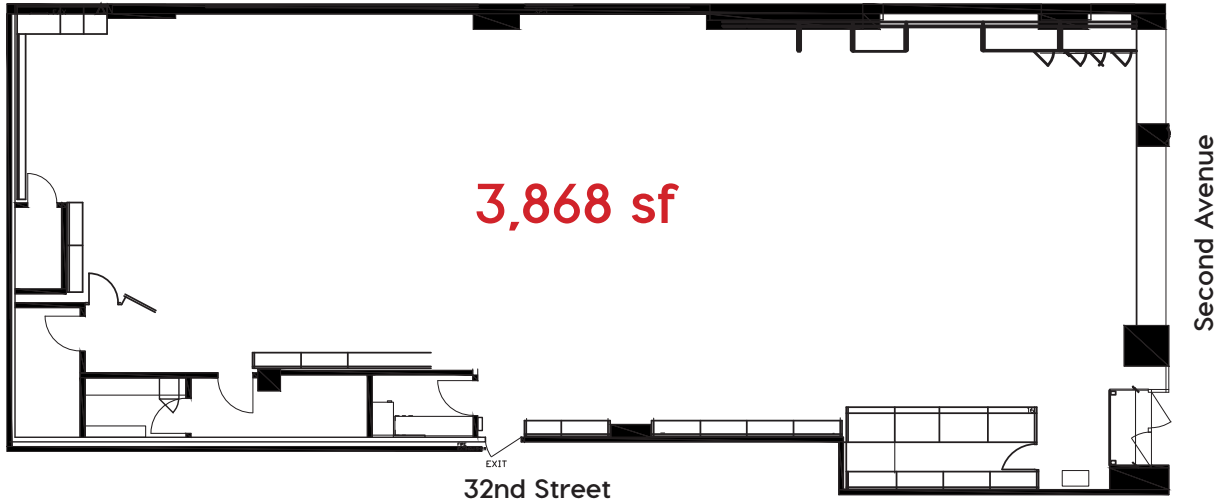
Patrick A. Smith

+1 212 812 5888

Patricka.Smith@am.jll.com

585 Second Avenue

Ground Floor



Map



Jones Lang LaSalle Brokerage, Inc. | 330 Madison Avenue New York, NY 10017

DISCLAIMER

Although information has been obtained from sources deemed reliable, neither Owner nor JLL makes any guarantees, warranties or representations, express or implied, as to the completeness or accuracy as to the information contained herein. Any projections, opinions, assumptions or estimates used are for example only. There may be differences between projected and actual results, and those differences may be material. The Property may be withdrawn without notice. Neither Owner nor JLL accepts any liability for any loss or damage suffered by any party resulting from reliance on this information. If the recipient of this information has signed a confidentiality agreement regarding this matter, this information is subject to the terms of that agreement. ©2019 Jones Lang LaSalle IP, Inc. All rights reserved.

