



192 Duffield Street

Retail Opportunity

Downtown Brooklyn, Brooklyn, NY

Between Willoughby Street and Myrtle Avenue

Space

Ground Floor 600 sf

Lower Level 530 sf

Frontage

27 ft on Willoughby

Ceiling Heights

Ground Floor 10 ft

Possession

Immediate

Comments

- Surrounded by dense office, residential, and student populations
- Across the street from City Point, MetroTech, and Willoughby Square
- Two blocks away from Jay Street MetroTech Station **A C F R** and Dekalb Avenue Station **B Q R**
- All uses will be considered

Neighbors



TRADER JOE'S



Ryan P. Condren

+1 212 220 4117

ryan.condren@am.jll.com

George Danut

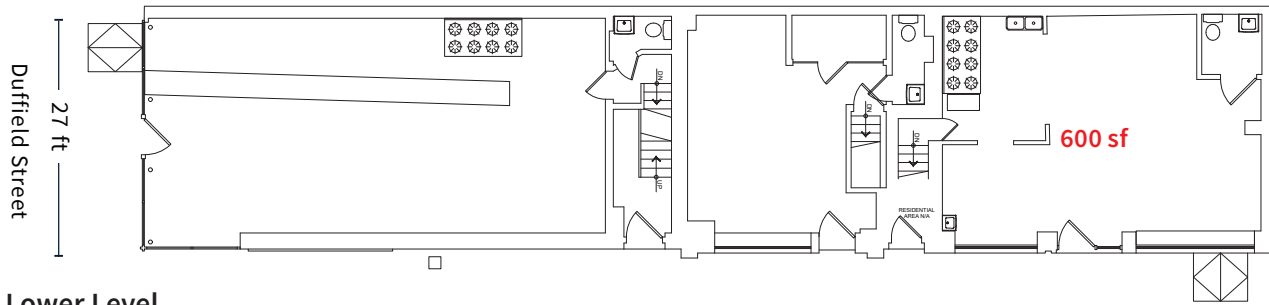
+1 212 220 4121

george.danut@am.jll.com

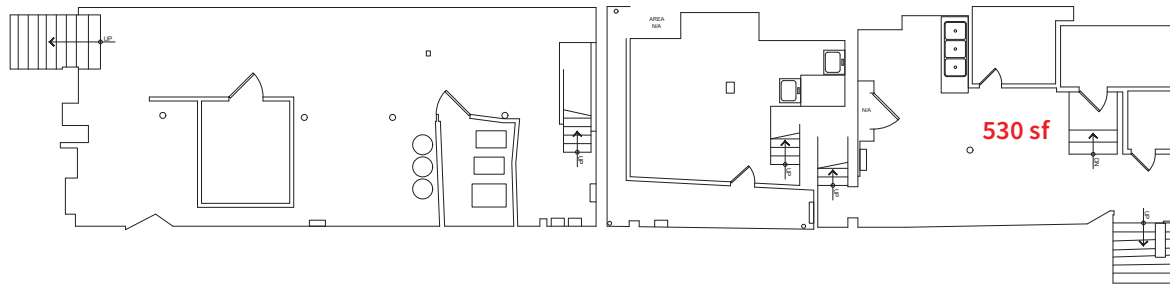


192 Duffield Street

Ground Floor



Lower Level



29M
annual ridership



170K
daytime population



162K
average household
income

Jones Lang LaSalle Brokerage, Inc. | 330 Madison Avenue New York, NY 10017

DISCLAIMER

Although information has been obtained from sources deemed reliable, neither Owner nor JLL makes any guarantees, warranties or representations, express or implied, as to the completeness or accuracy as to the information contained herein. Any projections, opinions, assumptions or estimates used are for example only. There may be differences between projected and actual results, and those differences may be material. The Property may be withdrawn without notice. Neither Owner nor JLL accepts any liability for any loss or damage suffered by any party resulting from reliance on this information. If the recipient of this information has signed a confidentiality agreement regarding this matter, this information is subject to the terms of that agreement. ©2019. Jones Lang LaSalle IP, Inc. All rights reserved.

