



West Creek Medical Park

1630 Wilkes Ridge Parkway
Richmond, VA 23233



1,254- 4,614 RSF Available for Sublease

Kaylin Phillips
+ 1 804 802 6125

Kaylin.phillips@am.jll.com

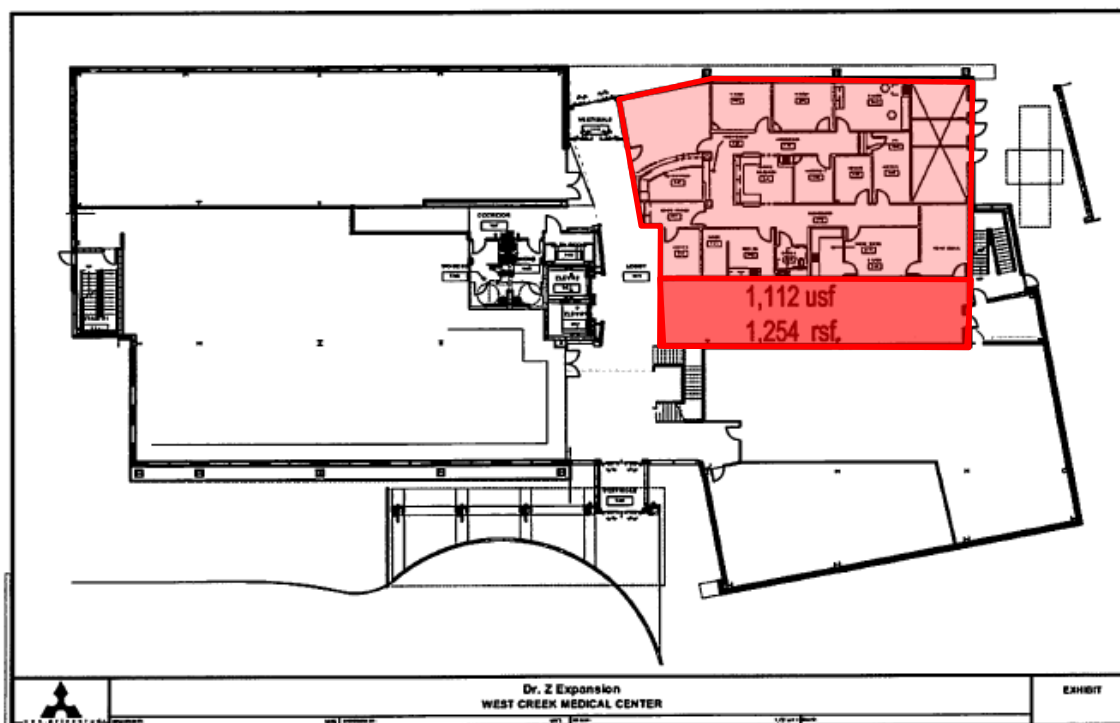
John Simmons
+ 1 804 200 6554

john.simmons@am.jll.com

Suite overview

SUITE SIZE	1,254- 4,614 SF
CLASS	A
FLOOR SIZE	24,323 SF
PARKING	5 per 1,000 RSF
SUITE LOCATION	First floor access

The property is located at the intersection of Broad Street and Highway 288 for easy access from all points of Richmond. The population in the northwest quadrant is steadily growing. It is in close proximity to a critical mass of retail in Short Pump creating an ideal location for any medical practice.



West Creek Medical Park
1630 Wilkes Ridge Pky Richmond, VA 23233

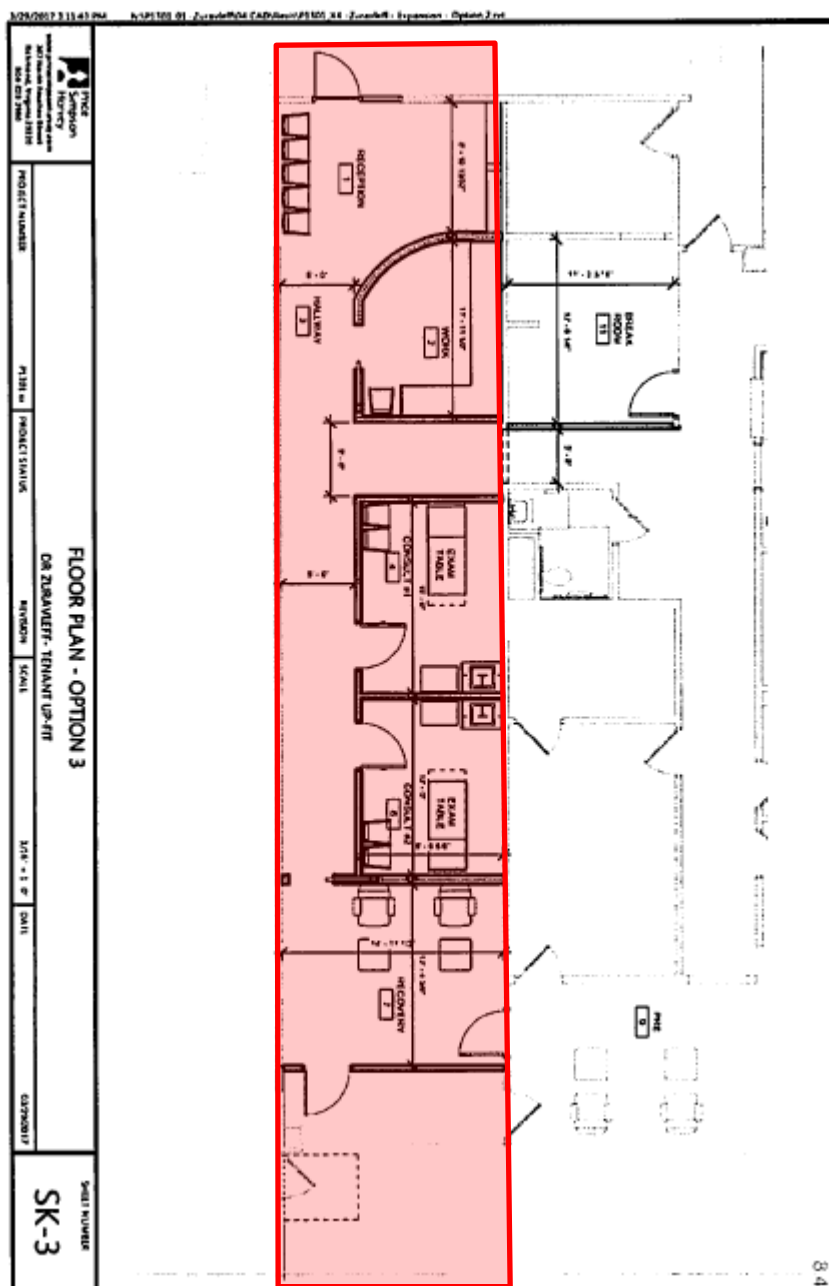
1,112- 4,614 RSF Available for Sublease

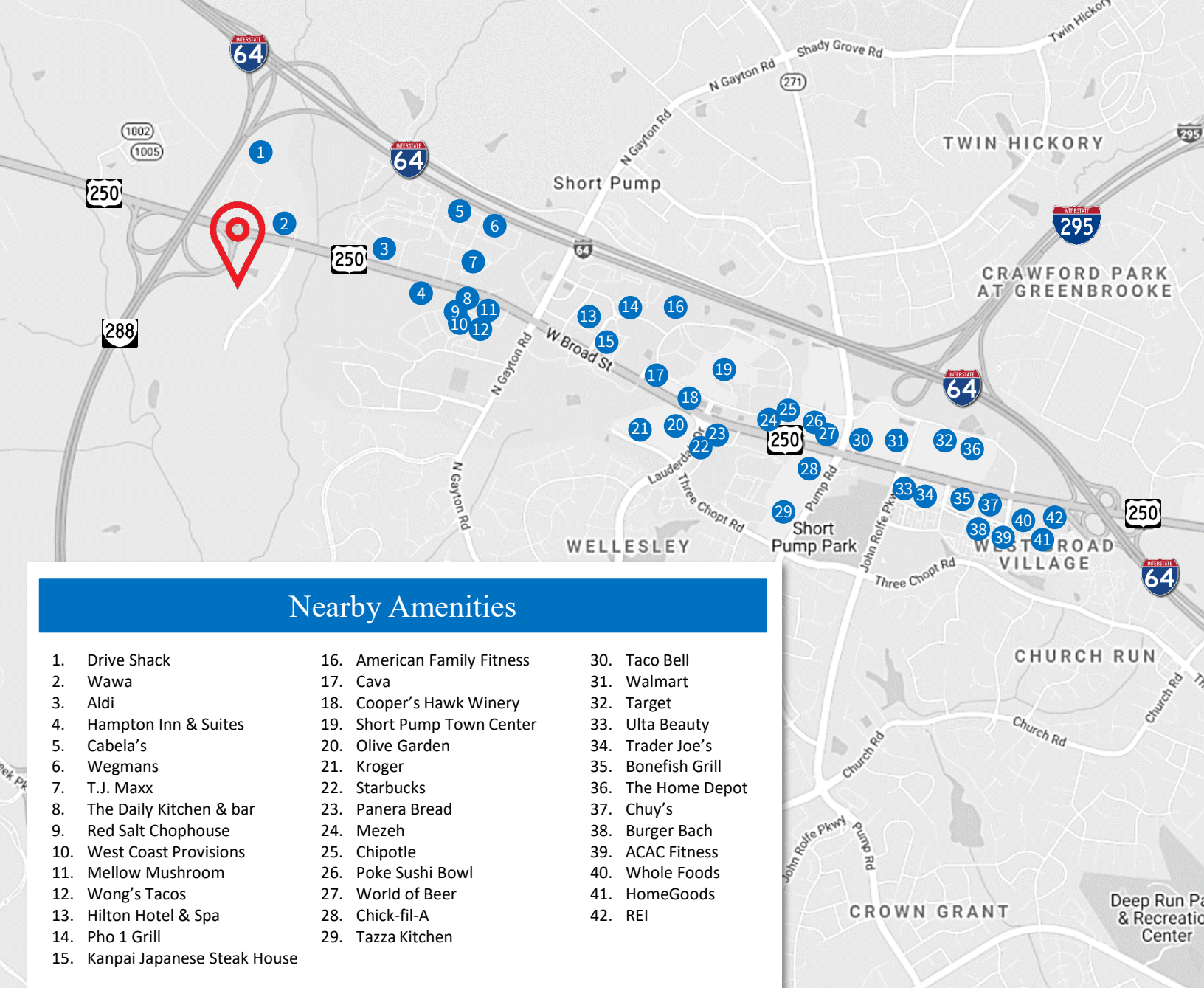


Potential Subdivide- 1,254 SF

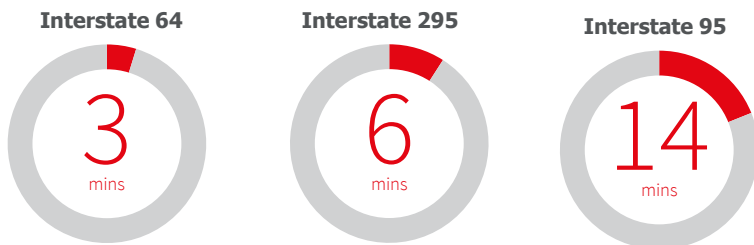
Suite Features

- 1,254 RSF Available
- Lobby Presence
- Reception
- 2 Exam Rooms
- Patient/ Client seating area





Traffic scores



Kaylin Phillips
Associate

tel + 1 804 802 6125
kaylin.phillips@am.jll.com

John Simmons
Vice President

tel + 1 804 200 6554
john.simmons@am.jll.com

Although information has been obtained from sources deemed reliable, JLL does not make any guarantees, warranties or representations, express or implied, as to the completeness or accuracy as to the information contained herein. Any projections, opinions, assumptions or estimates used are for example only. There may be differences between projected and actual results, and those differences may be material. JLL does not accept any liability for any loss or damage suffered by any party resulting from reliance on this information. If the recipient of this information has signed a confidentiality agreement with JLL regarding this matter, this information is subject to the terms of that agreement. ©2020. Jones Lang LaSalle IP, Inc. All rights reserved.