



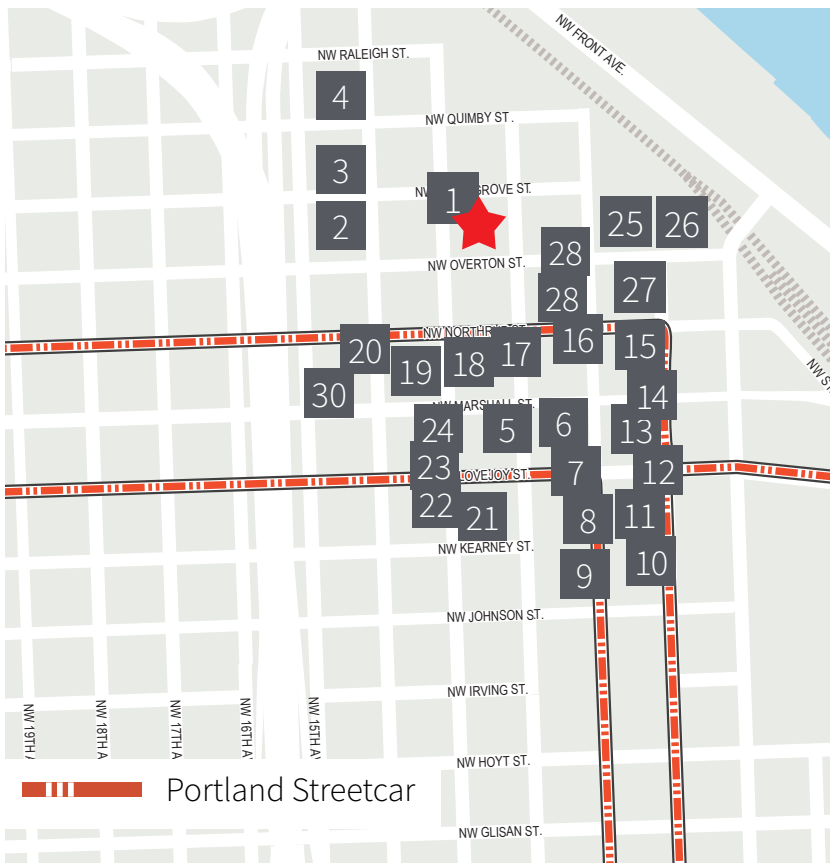
# For Lease

1355 NW 13th Ave.  
Portland, OR 97209

*Recently updated creative space primely located in the Pearl*

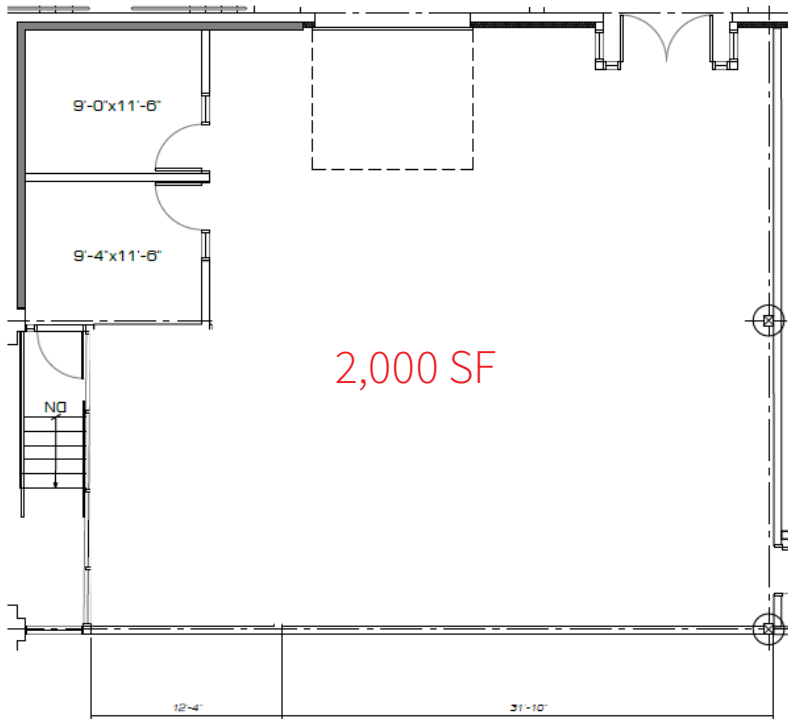
- 2,000 RSF with private entrance
- Roll-up glass garage door
- High ceilings with exposed beams
- New kitchenette
- Shared bike storage
- ADA accessible
- 2 private offices





## NEARBY AMENITIES

- |                          |                           |
|--------------------------|---------------------------|
| 1 Pure Pong              | 16 The Fields Bar & Grill |
| 2 Polish Day Spa         | 17 Sisters Coffee Company |
| 3 Planet Granite         | 18 BIKETOWN               |
| 4 The Old Portland       | 19 Bridgeport Brepub      |
| 5 Chipotle Mexican Grill | 20 LA Fitness             |
| 6 Seres                  | 21 Daily Cafe             |
| 7 Starbucks              | 22 On Deck Sports Bar     |
| 8 Wells Fargo Bank       | 23 Nossa Familia Coffee   |
| 9 Piazza Italia          | 24 Safeway                |
| 10 Jamison Square        | 25 The Fields Park        |
| 11 The Hairy Lobster     | 26 Ovation                |
| 12 Lovejoy Bakers        | 27 Pizzicato Pizza        |
| 13 Chase Bank            | 28 Carlita's              |
| 14 barre3                | 29 Kinespirit Circle      |
| 15 Tanner Springs Park   | 30 Cerulean Wine          |



## Contact for information

**Jessica Ramey**

Licensed in OR  
+1 503 997 8604

[jessica.ramey@am.jll.com](mailto:jessica.ramey@am.jll.com)

**Carter Beyl**

Licensed in OR  
+1 503 522 2280

[carter.beyl@am.jll.com](mailto:carter.beyl@am.jll.com)

Jones Lang LaSalle Brokerage, Inc.  
1120 NW Couch St., Suite 500  
Portland, OR 97209  
[www.jll.com/portland](http://www.jll.com/portland)

