



CREEKSIDE CORPORATE PARK

8905 nimbus



For leasing information contact:

Deron Jones

Licensed in OR, WA

503.937.2113

deron.jones@am.jll.com

Jessica Ramey

Licensed in OR

503.972.8604

jessica.ramey@am.jll.com

highlights

- \$26.50 / FS
- Building common area conference room
- High visibility
- Numerous outdoor amenities
- Natural light on all floors

availabilities

SUITE 125	first floor	3,340 RSF
SUITE 150	first floor	4,709 RSF
SUITE 310	third floor	2,359 RSF



Jones Lang LaSalle Brokerage, Inc. | 1120 NW Couch St. Suite 500 | Portland, OR 97209

©2020 Jones Lang LaSalle Brokerage, Inc. All rights reserved. All information contained herein is from sources deemed reliable; however, no representation or warranty is made to the accuracy thereof.





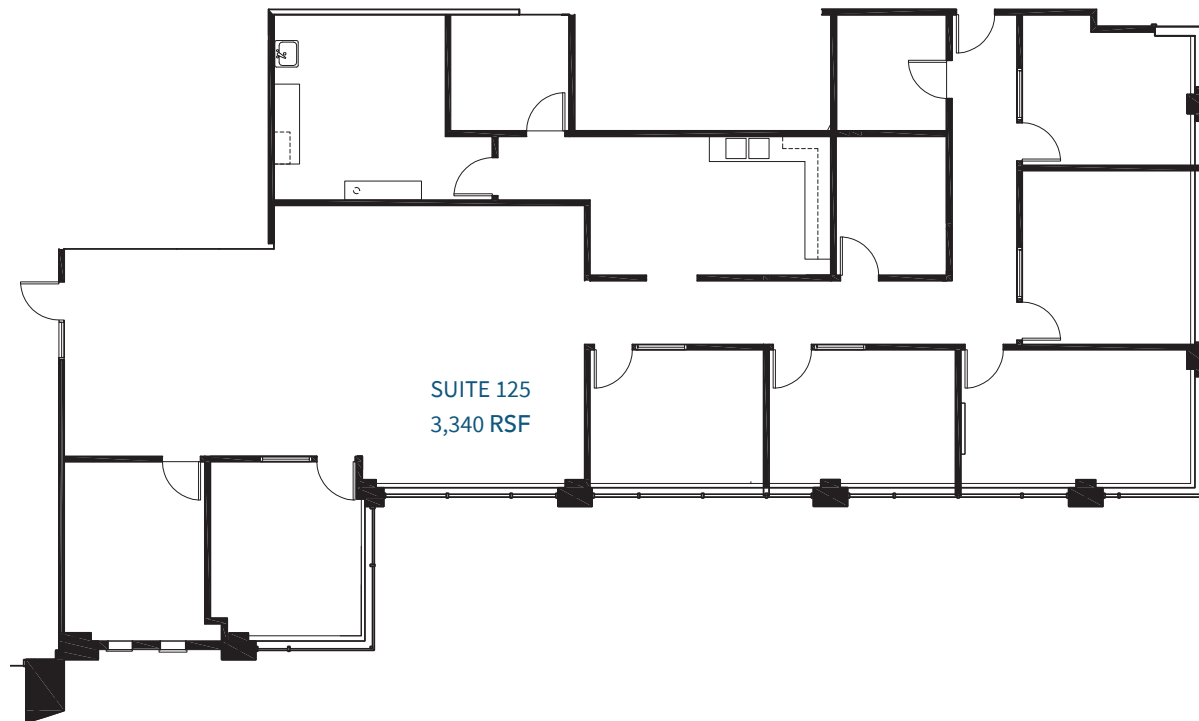
CREEKSIDE

CORPORATE PARK

8905 nimbus
first floor

availabilities

SUITE 125 - 3,340 RSF



For leasing information contact:

Deron Jones

Licensed in OR, WA

503.937.2113

deron.jones@am.jll.com

Jessica Ramey

Licensed in OR

503.972.8604

jessica.ramey@am.jll.com

Jones Lang LaSalle Brokerage, Inc. | 1120 NW Couch St. Suite 500 | Portland, OR 97209

©2020 Jones Lang LaSalle Brokerage, Inc. All rights reserved. All information contained herein is from sources deemed reliable; however, no representation or warranty is made to the accuracy thereof.





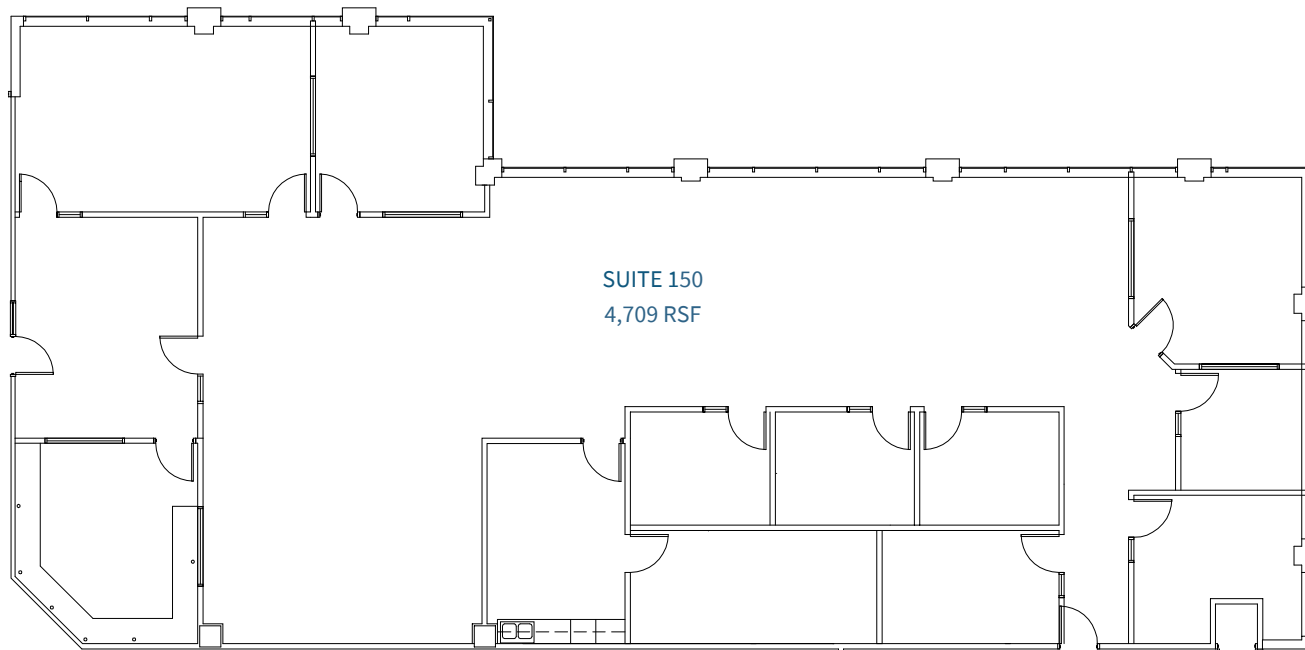
CREEKSIDE

CORPORATE PARK

8905 nimbus
first floor

availabilities

SUITE 150 - 4,709 RSF



For leasing information contact:

Deron Jones

Licensed in OR, WA

503.937.2113

deron.jones@am.jll.com

Jessica Ramey

Licensed in OR

503.972.8604

jessica.ramey@am.jll.com

Jones Lang LaSalle Brokerage, Inc. | 1120 NW Couch St. Suite 500 | Portland, OR 97209

©2020 Jones Lang LaSalle Brokerage, Inc. All rights reserved. All information contained herein is from sources deemed reliable; however, no representation or warranty is made to the accuracy thereof.





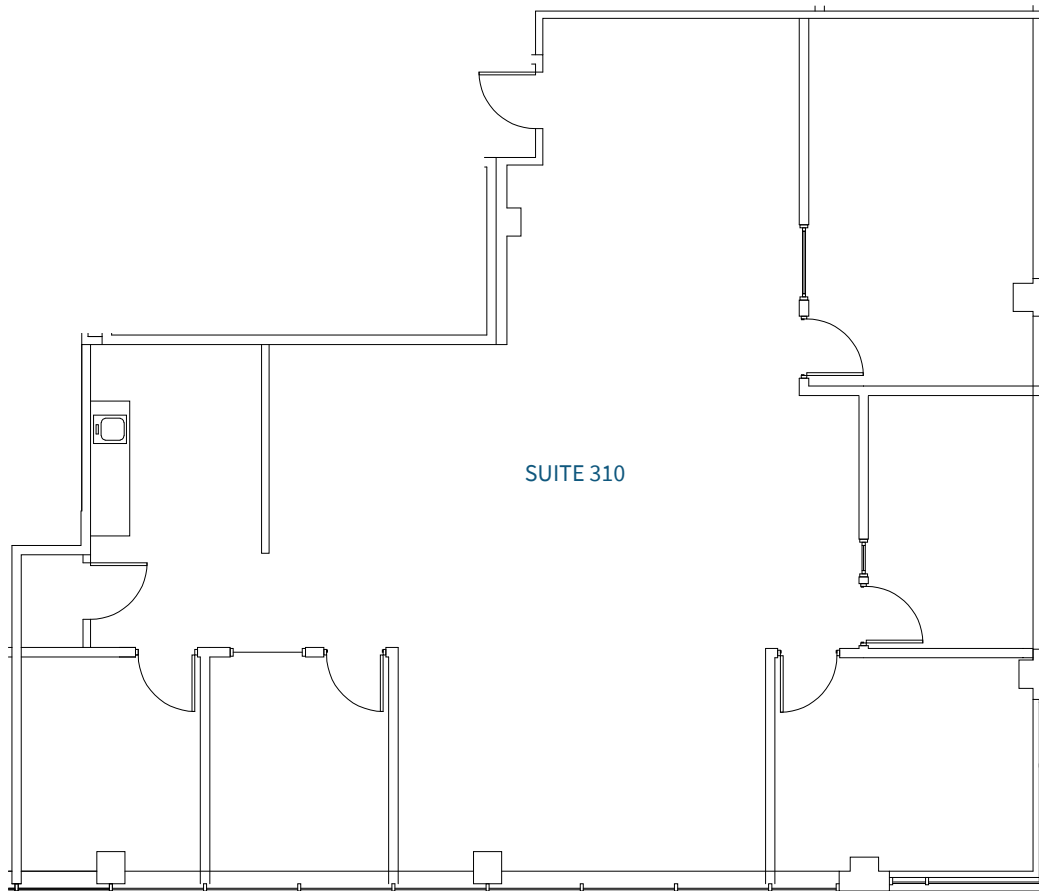
CREEKSIDE

CORPORATE PARK

8905 nimbus
third floor

availabilities

SIUTE 310 - 2,359 RSF



For leasing information contact:

Deron Jones

Licensed in OR, WA

503.937.2113

deron.jones@am.jll.com

Jessica Ramey

Licensed in OR

503.972.8604

jessica.ramey@am.jll.com

Jones Lang LaSalle Brokerage, Inc. | 1120 NW Couch St. Suite 500 | Portland, OR 97209

©2020 Jones Lang LaSalle Brokerage, Inc. All rights reserved. All information contained herein is from sources deemed reliable; however, no representation or warranty is made to the accuracy thereof.

