

THE GLASS LAB

**Creative Office
+ Maker Space
Available Now**



GLASS FACTORY TURNED INNOVATION WORKSHOP

Formerly home to a glass factory, this vintage industrial building is being transformed into a community-oriented creative hub for the next generation of creators and innovators.

350 SE MILL ST. | PORTLAND, OR 97214



Experience The Glass Lab

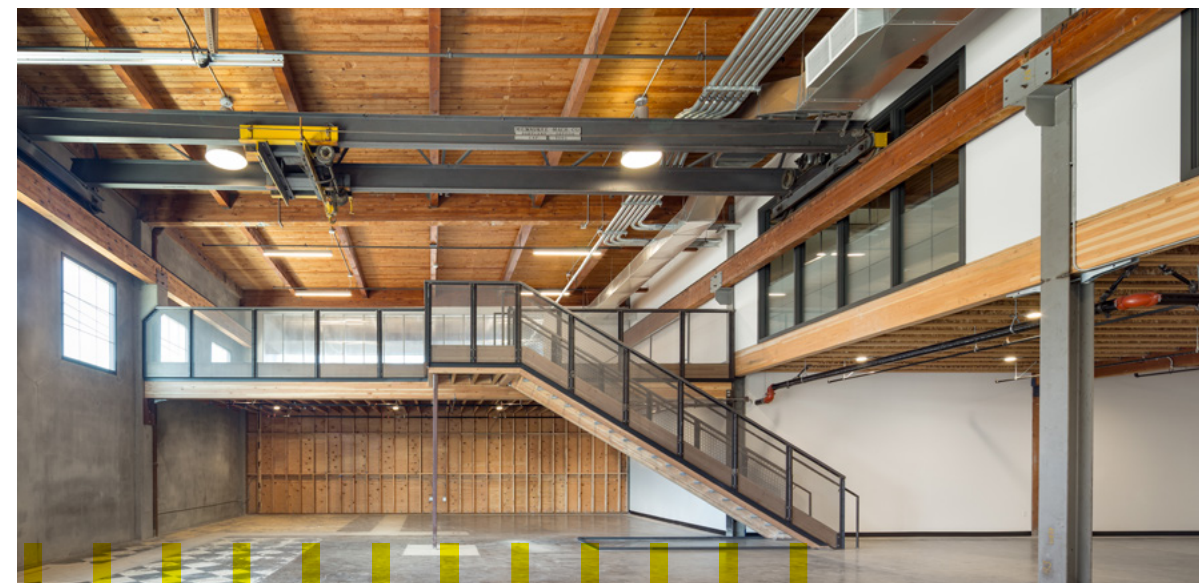
- 46,000SF of inspiring, creative space
- Suites average 2,000-5,000SF*
- Creative office
- Incubator spaces/pop-ups
- Flexible leases
- Rates starting at \$25/SF NNN
- Superior access to transit and lightrail
- On-site parking

** Spaces can be combined*



Features

- Exposed concrete, beautiful old growth timber beams and tongue and groove wood floors
- Double height 20' ceilings in select suites
- Extensive windowlines, large skylights and natural light
- Common loading dock
- Select ground level suites will come equipped with mezzanines
- Second floor spaces fully air conditioned





Calling all makers

Advanced, desktop and craft manufacturing

Internal glass sectional roll-up doors

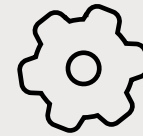
Common loading dock



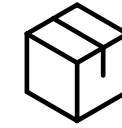
Ideal for:



Lab Space



Manufacturing



Shipping



Woodworking

and more...



Amenities

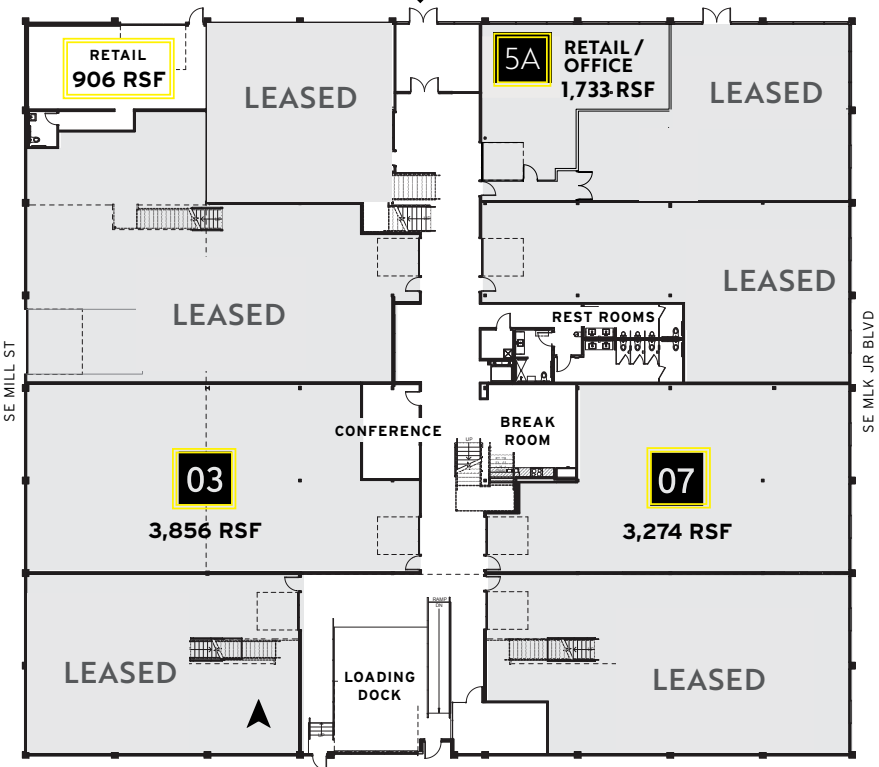


OPEN COLLABORATIVE DESIGN PROVIDES SPACE FOR MEANINGFUL PEER INTERACTIONS.

- Ground floor collaborative gathering area
- Common kitchen with gas range, fridge and beer taps
- Shared glass conference room
- Bike parking and shower
- On-site parking
- On-site food and beverage and retail

Floorplans

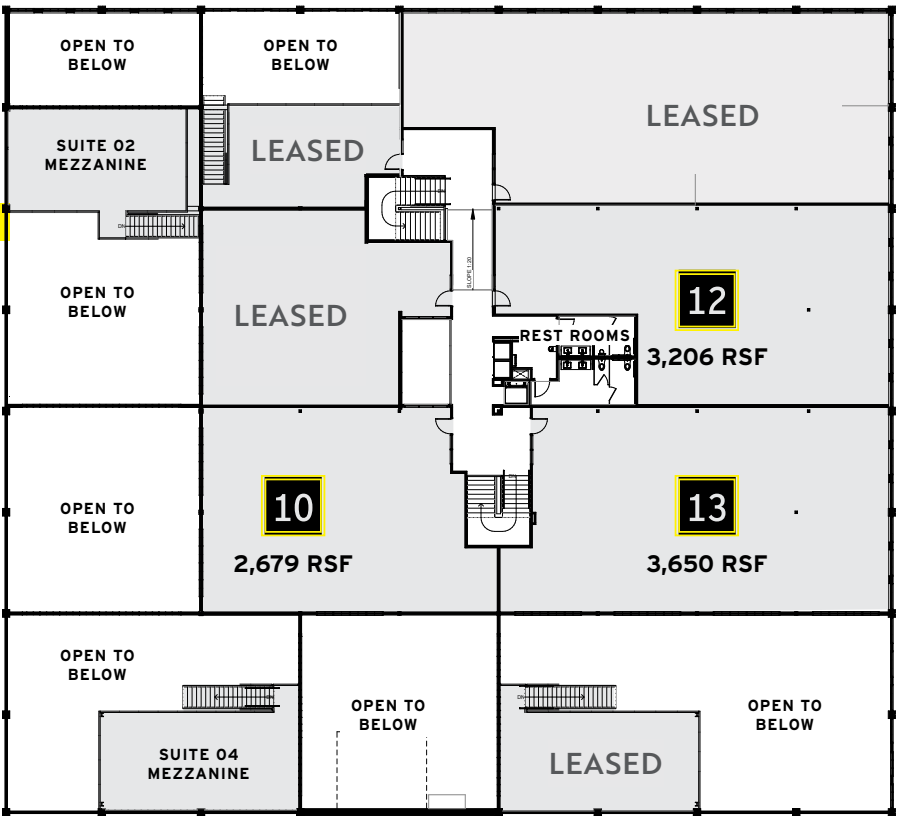
LEVEL 1



Level 1

▲ Indicates spaces with additional second floor mezzanine

Level 2



Neighborhood



RESTAURANTS & BARS

Zell's Café
Lardo
Rogue
Lucky Labrador
Afuri
Dig A Pony
Stacked Sandwiches
Hair of the Dog
Nossa Familia Coffee
Clarklewis
White Owl
Coava
Noraneko
New Cascadia
Ground Breaker
Firkin Tavern
Aprisa Mexican Cuisine
Pine State Biscuits



100
BIKE SCORE



77
TRANSIT SCORE



68
WALK SCORE



BROKERS

MIKE MALONE
503 972 8609
mike.malone@jll.com
Licensed in OR

CARTER BEYL
503 505 7120
carter.beyl@jll.com
Licensed in OR

JONES LANG LASALLE BROKERAGE, INC.
503 972 8000
1120 NW Couch St, #500
Portland, OR 97209

