



Available For Lease



Multi-level office park opportunity with excellent location and prime amenities

Availabilities: 2,236 rsf to 4,762rsf Location: 875 Greentree Road



Building & Space Highlights

- Surrounding office park/campus environment
- Accessibility to CBD through dedicated exit ramp
 - 5-minute drive to downtown
 - 18-minute drive to the airport
 - 15-minute drive to the Strip District
 - 10-minute drive to South Side
 - 15-minute drive to Mt. Lebanon
 - 9-minute drive to North Shore
 - 9-minute drive to I-79 interchange
- Onsite PAT bus lines 36, 38 and 41 servicing the following neighborhoods: Downtown, Banksville, Mt. Lebanon, Bethel Park, South Hills Village, Greentree, Scott, Collier, Ridgemont, West End, Station Square, West Liberty Ave., Dormont, and Bridgeville
- Proximity to the new City Vista apartments



Amenities



Abundant free parking



On-site shipping/receiving area with loading dock



Nearby food services



On-site hotel

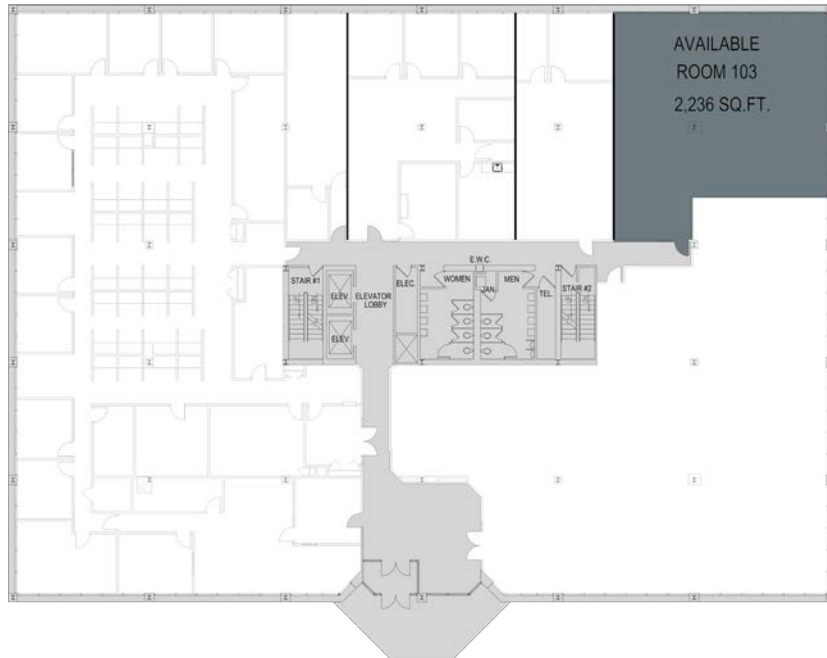


Walkable distance to U.S. Postal Service

Availabilities



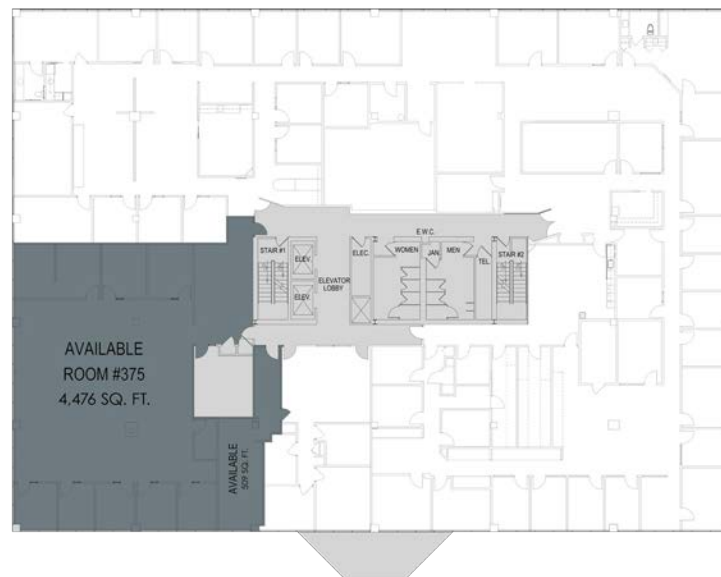
Room 103 | 2,236 RSF



Room 290 | 4,762 RSF



Room 375 | 4,476 RSF



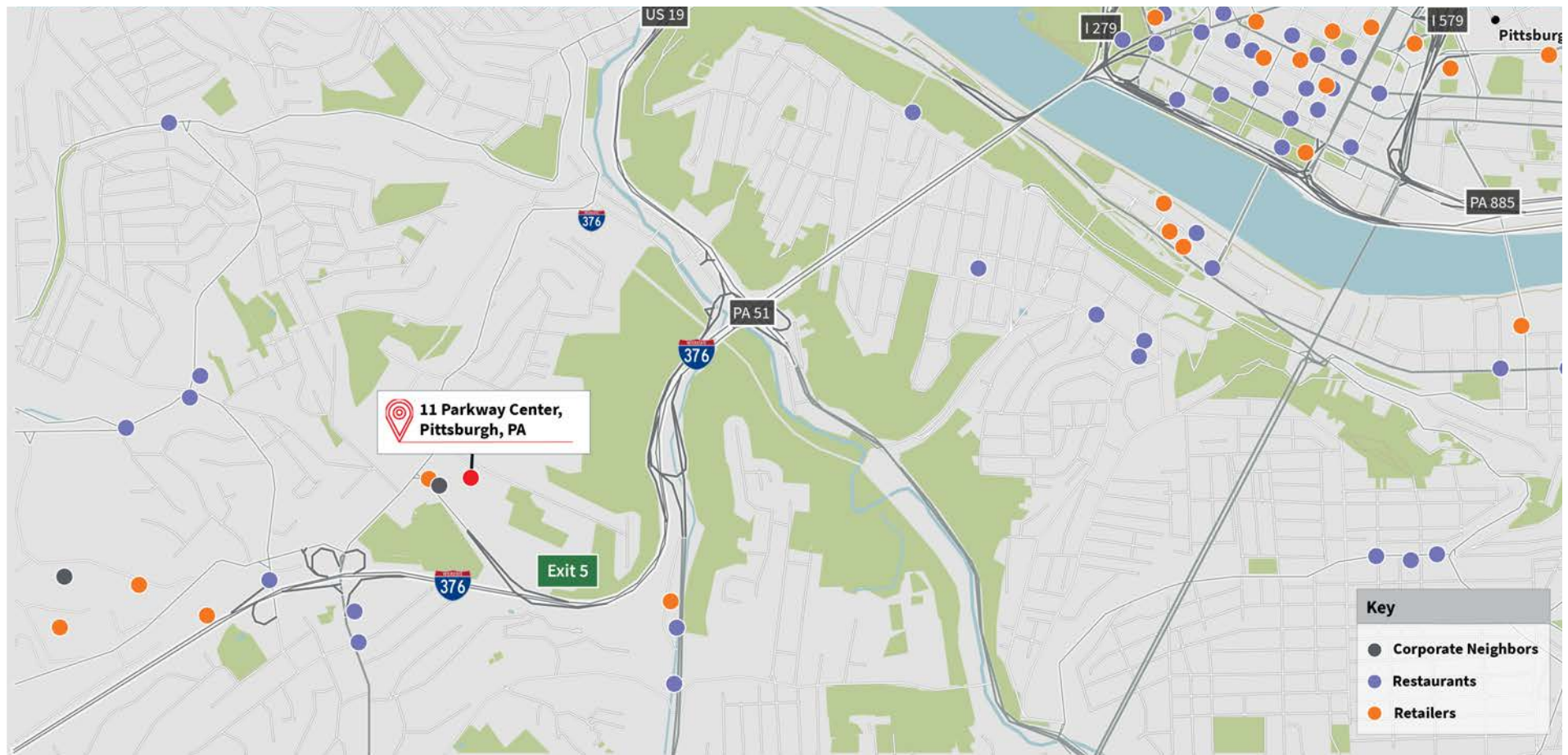
Jesse Ainsman

+1 412 208 8414

Jesse.Ainsman@am.jll.com

Excellent Location

With just a 5-minute drive to downtown Pittsburgh, Eleven Parkway Center is a prime location for access to several local amenities. This location not only has proximal transportation routes to the CBD, but its surrounding area includes an onsite hotel and other nearby retailers and restaurants.



Jesse Ainsman
+1 412 208 8414
Jesse.Ainsman@am.jll.com

Although information has been obtained from sources deemed reliable, Owner, Jones Lang LaSalle, and/or their representatives, brokers or agents make no guarantees as to the accuracy of the information contained herein, and offer the Property without express or implied warranties of any kind. The Property may be withdrawn without notice. If the recipient of this information has signed a confidentiality agreement regarding this matter, this information is subject to the terms of that agreement. ©2020. Jones Lang LaSalle. All rights reserved.