

8900 KEYSTONE CROSSING



BUILDING DESCRIPTION

Year completed	1978
Size	12 stories, 244,771 square feet
County	Marion County
Zoning	C4, Community-Regional Commercial District
Renovated	2006

STRUCTURE

Typical floor	21,300 square feet
Ceiling height	Slab-to-slab 13' Finished 15' on first floor, 9' typical

TRANSPORTATION

Highway	Immediate access to I-465 and Keystone Avenue
Airport	24 miles to Indianapolis International Airport
Parking	1,038 spaces (410 garage, 628 surface)

ELEVATORS / DOCK

Passenger	Four
Freight	One
Loading dock	Yes

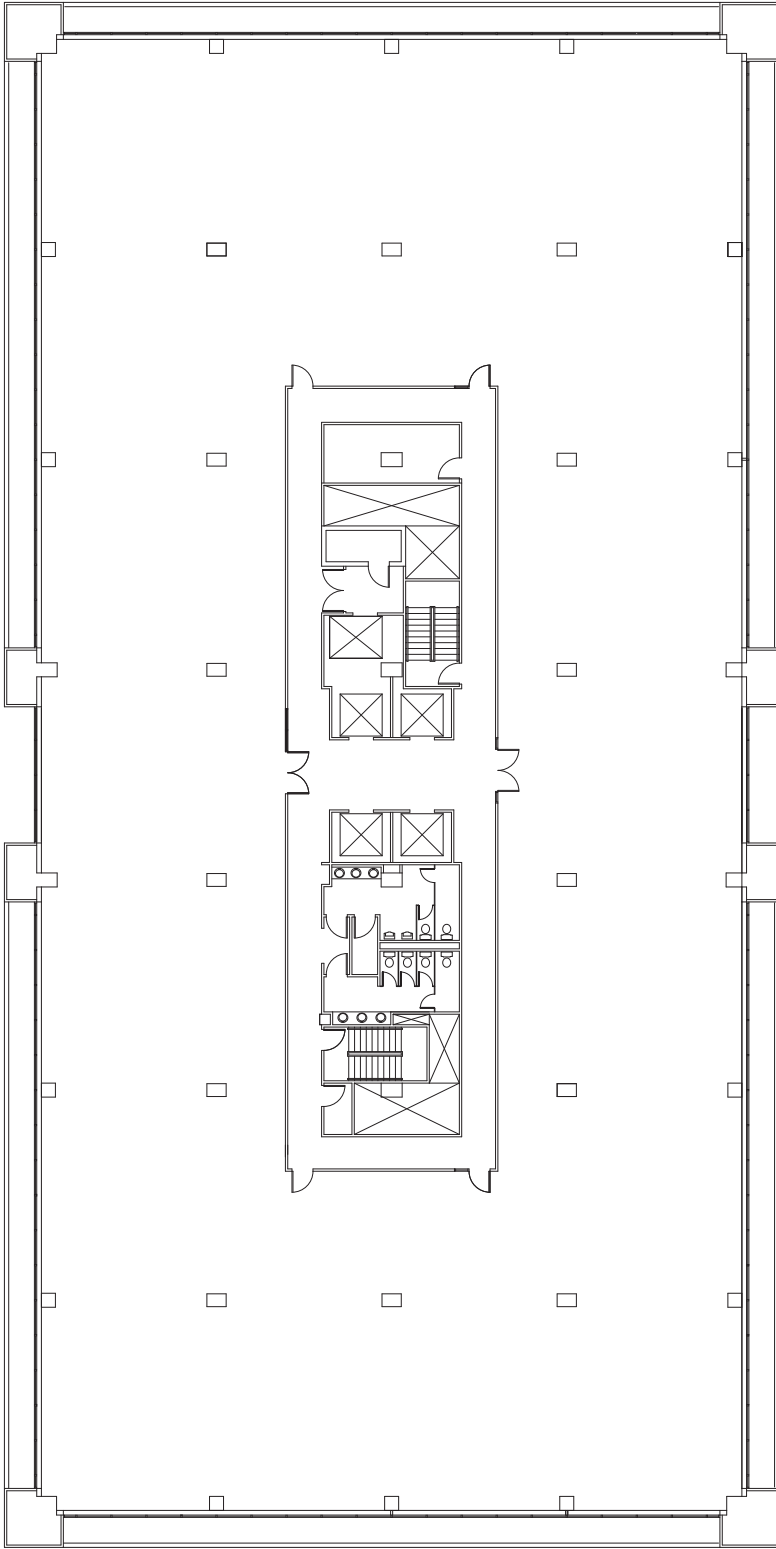
BUILDING SYSTEMS

HVAC	Chilled water VAV, one zone per 1,500 square feet
Electrical	Up to 6 watts per square foot, two panels per floor
Fire / life safety	Simplex Model 4100
Security	Honeywell electronic access system
Fiber optics	Fiber "Lit" building Comcast cable

BUILDING TEAM

Owner	M&J Wilkow
Property Manager	M&J Wilkow
Original architect	Wright, Porteous & Lowe/Bonar
Leasing contact	John R. Robinson, JLL +1 317.810.7172 Abby Zito, JLL +1 317.810.7173





8900 Keystone Crossing

Typical floorplan