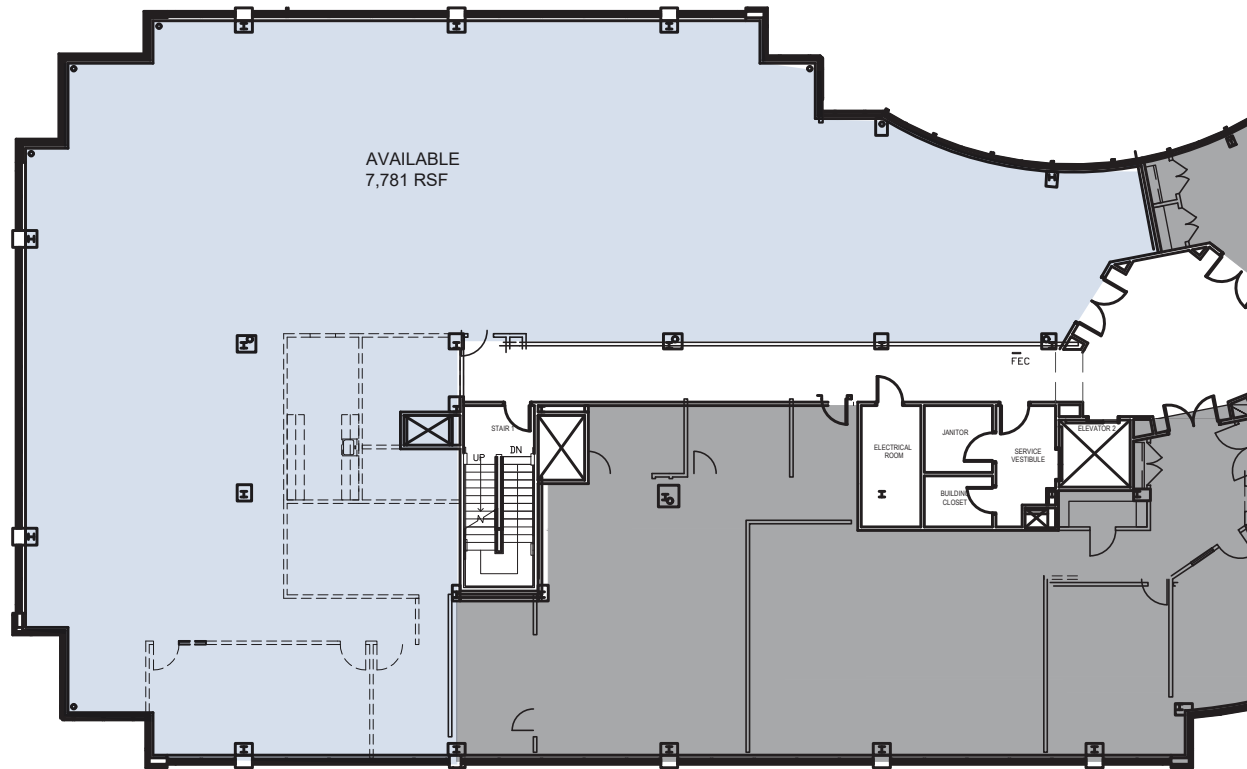


1000 Floral Vale Blvd, Yardley, PA 19067

Floor	Second
Size	7,781 RSF



FOR LEASING INFORMATION

Patrick Grenko
+1 215 399 1803
patrick.grenko@jll.com

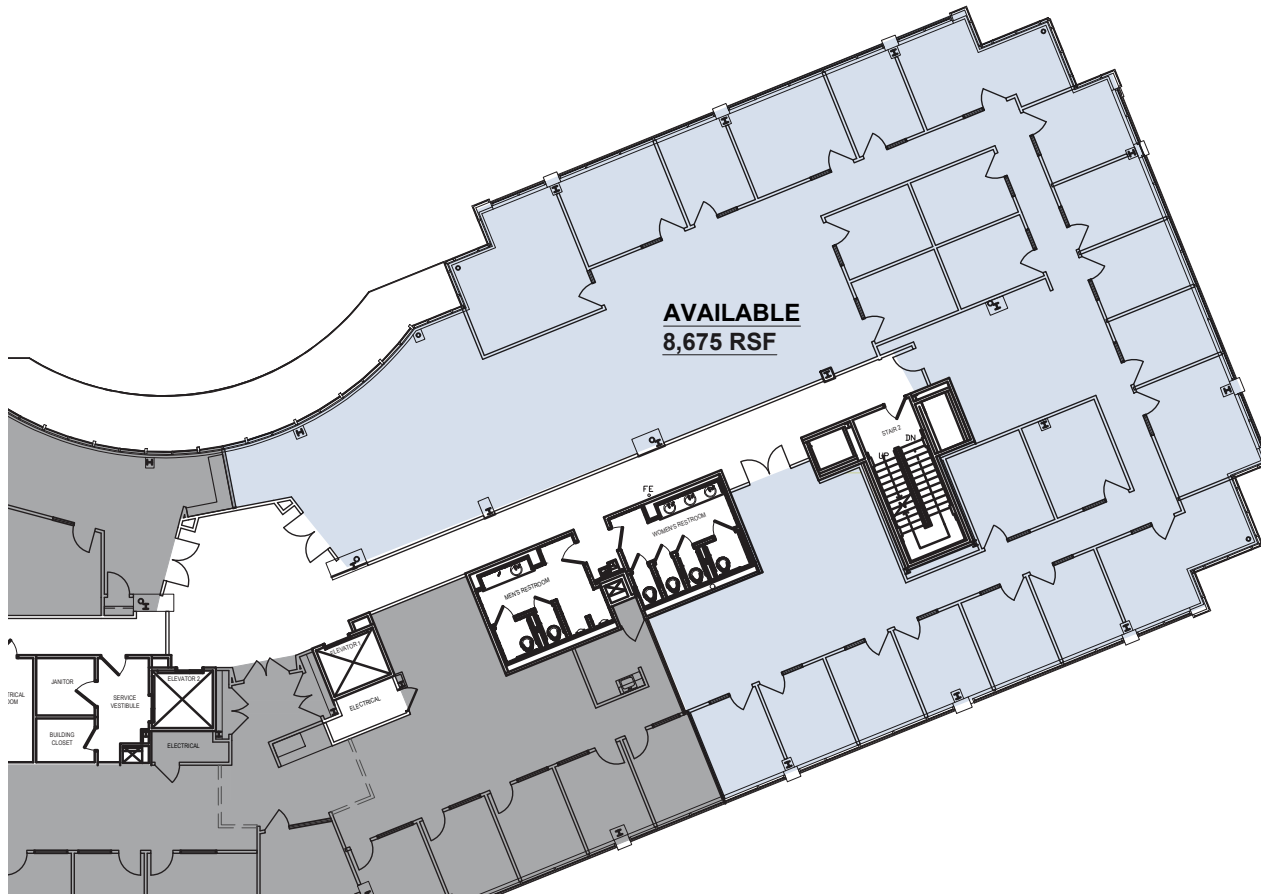
Tom Weitzel
+1 215 399 1840
tom.weitzel@jll.com

JLL | Jones Lang LaSalle Brokerage, Inc.
1650 Arch Street, Suite 2500
Philadelphia, PA 19103
+1 215 988 5500
jll.com/philadelphia



1000 Floral Vale Blvd, Yardley, PA 19067

Floor	Third
Size	8,675 RSF



FOR LEASING INFORMATION

Patrick Grenko
+1 215 399 1803
patrick.grenko@jll.com

Tom Weitzel
+1 215 399 1840
tom.weitzel@jll.com

JLL | Jones Lang LaSalle Brokerage, Inc.
1650 Arch Street, Suite 2500
Philadelphia, PA 19103
+1 215 988 5500
jll.com/philadelphia

