

185 W. F STREET



9,200 S.F. FULL FLOOR AVAILABLE IN DOWNTOWN SAN DIEGO

185 W. F STREET





// Downtown office building available for lease

// Full exterior & interior renovation

// 9,000 SF floor plates

// Prominently located on the corner of Front Street & F Street, with highly visible signage opportunities

// Creative style office space with high exposed ceilings, floor-to-ceiling windows and top floor balconies with panoramic views

// Subterranean parking with direct access into building lobby. Additional parking available on-site

// Showers and lockers on 3rd, 5th & 7th floors

// Highly desired location with abundance of walkable amenities:

Next door to Horton Plaza

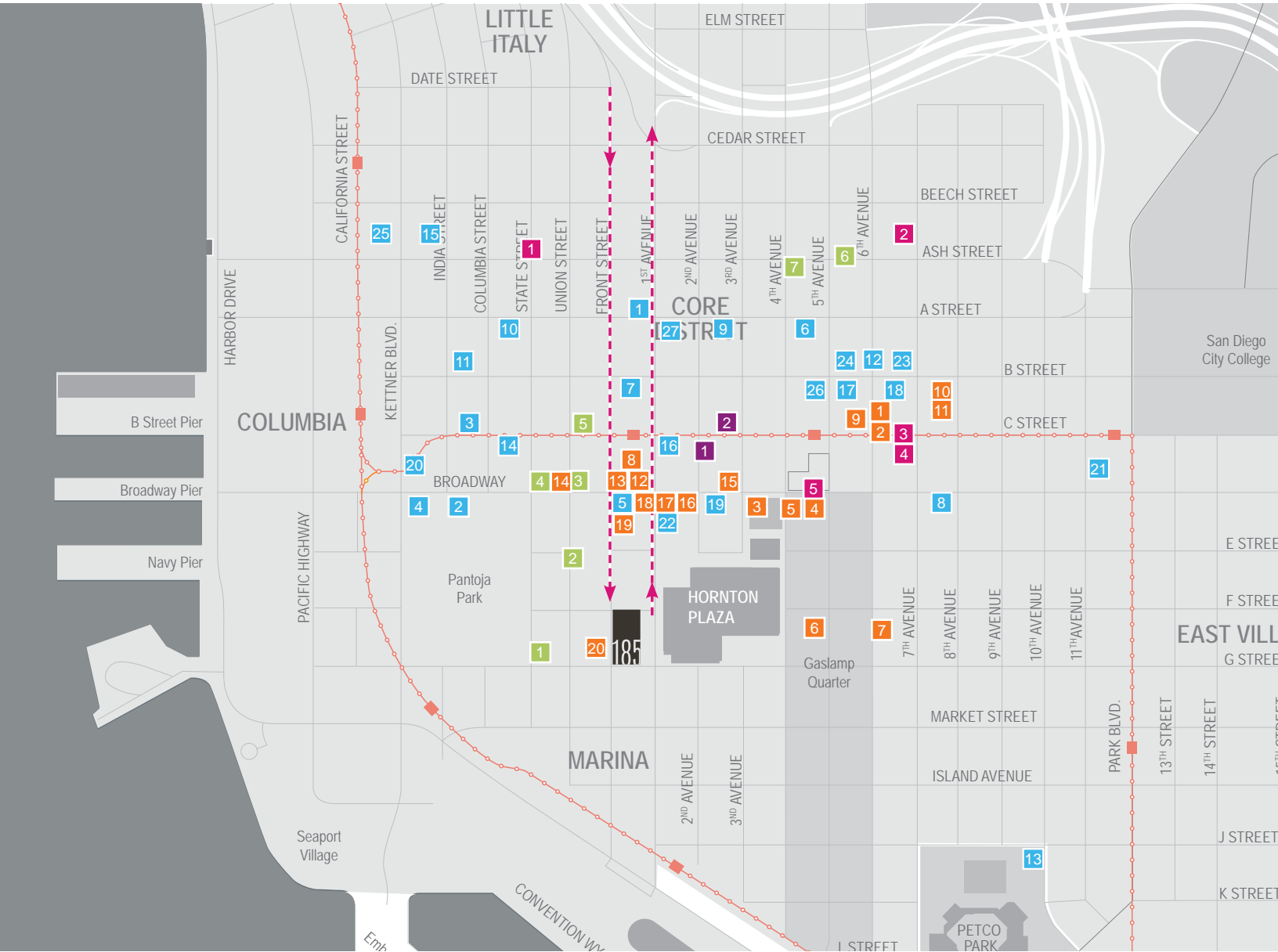
3 blocks to Gaslamp Quarter

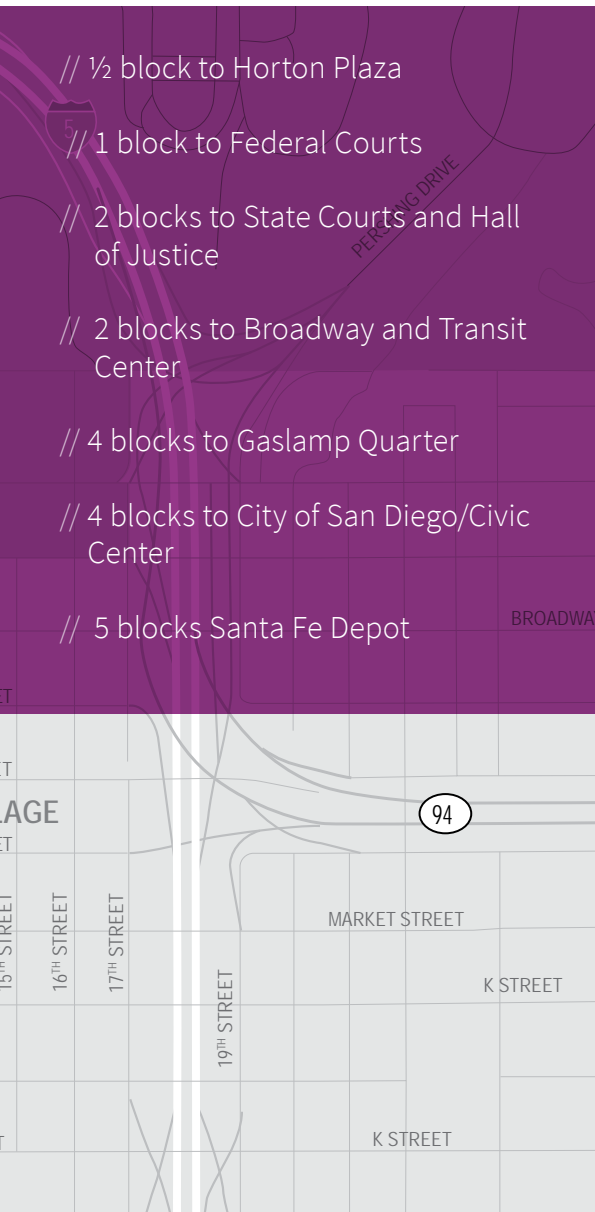
4 blocks to San Diego Convention Center

Adjacent to large park

creative. urban. unique.

185 W. F STREET





■ Parking

- 1. 110 Plaza Bldg
- 2. 501 W Broadway
- 3. 550 Corporate Ctr
- 4. First Allied Plaza
- 5. AT&T
- 6. Bank of America Plaza
- 7. Chamber Bldg
- 8. Chase Bldg
- 9. Civic Center Plaza
- 10. Columbia Center
- 11. Columbia Square
- 12. 600 B
- 13. DiamondView Tower
- 14. Emerald Plaza
- 15. ESET Building
- 16. Executive Complex
- 17. Golden Eagle Plaza
- 18. Merrill Lynch Bldg
- 19. NBC Bldg
- 20. One America Plaza
- 21. Smart Corner
- 22. Spreckels Bldg
- 23. Symphony Towers
- 24. Union Bank
- 25. US Bank
- 26. Wells Fargo Plaza
- 27. Evan V. Jones Parkade

■ Civic Center Plaza

- 1. San Diego City Hall
- 2. San Diego Civic Theatre

■ Courthouses

- 1. Bankruptcy Courts
- 2. Federal Courts
- 3. Superior Courts
- 4. Hall of Justice
- 5. Law Library
- 6. State Court - Family Court
- 7. State Court - Madge Bradley

■ Gyms

- 1. BodyFit
- 2. Vai Fitness
- 3. Yoga One
- 4. Balanced Fitness & Health
- 5. Aire Urban Fitness

➔ Ingress/egress

■ Restaurants

- 1. Robeks
- 2. Old Gallery Coffee House
- 3. Grant Grill
- 4. RA Sushi
- 5. Yard House
- 6. Croce's

convenient walkability

185 W. F STREET

BROADWAY



Horton Plaza Food

- Formaggio Pasta, Pizza & Salads
- Jamba Juice
- Panda Express
- Starbucks
- Pancho Park
- Sarku Japan
- Steak Escape
- Taco Bell



Specialty's



HORTON PLAZA

185

Gaslamp Quarter

7TH AVENUE

1/2 block to Horton Plaza



convenient walkability

185 W. F STREET





Availability

Suties	SF	Rate	Comments
110	1,207	Neg.	1st floor double door entry.
310	2,376	Neg.	Shell condition.
430	4,233	Neg.	4th floor double door entry.

flexible floorplates

185 W. F STREET

Suite 110

1,207 s.f.

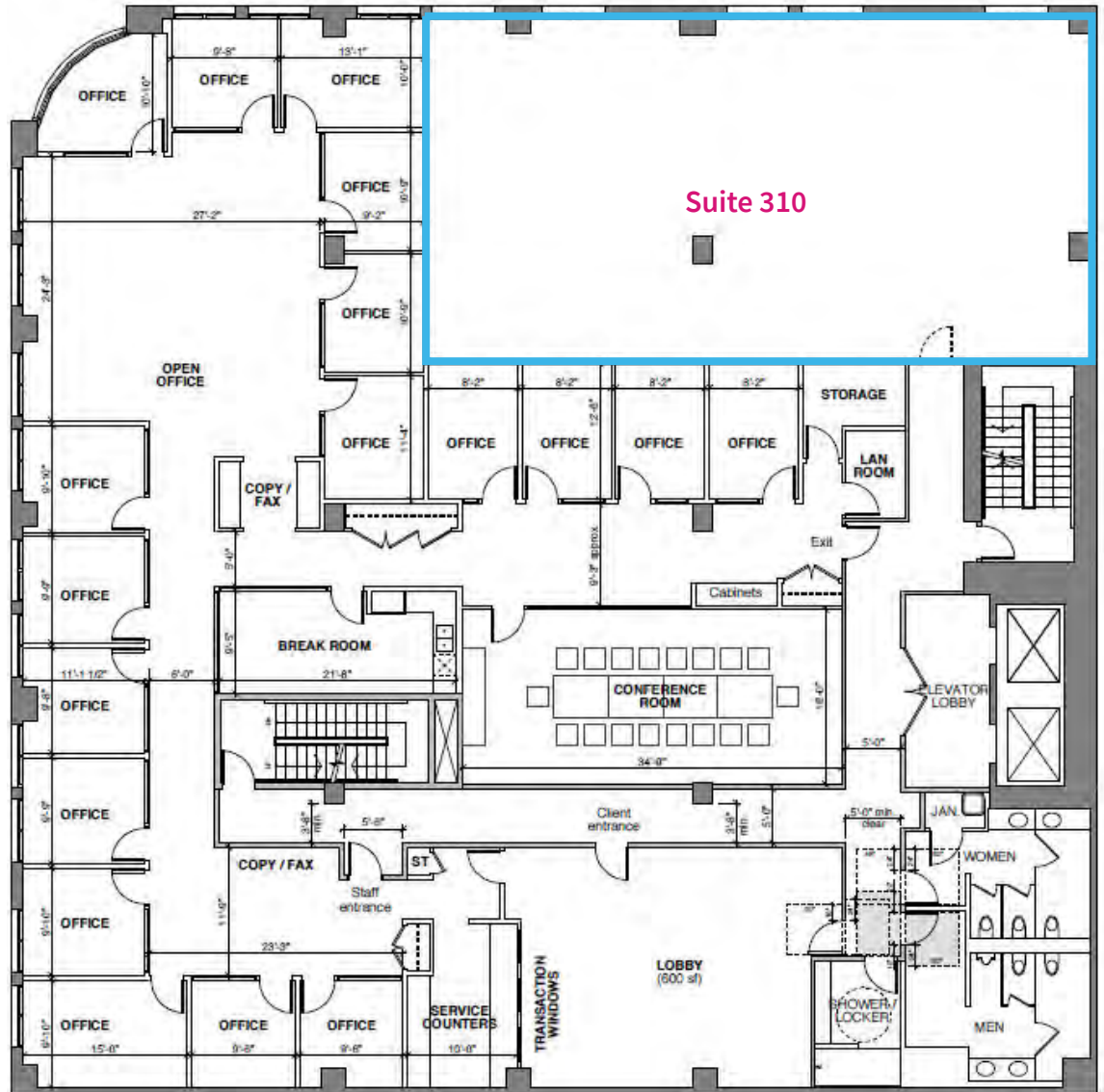


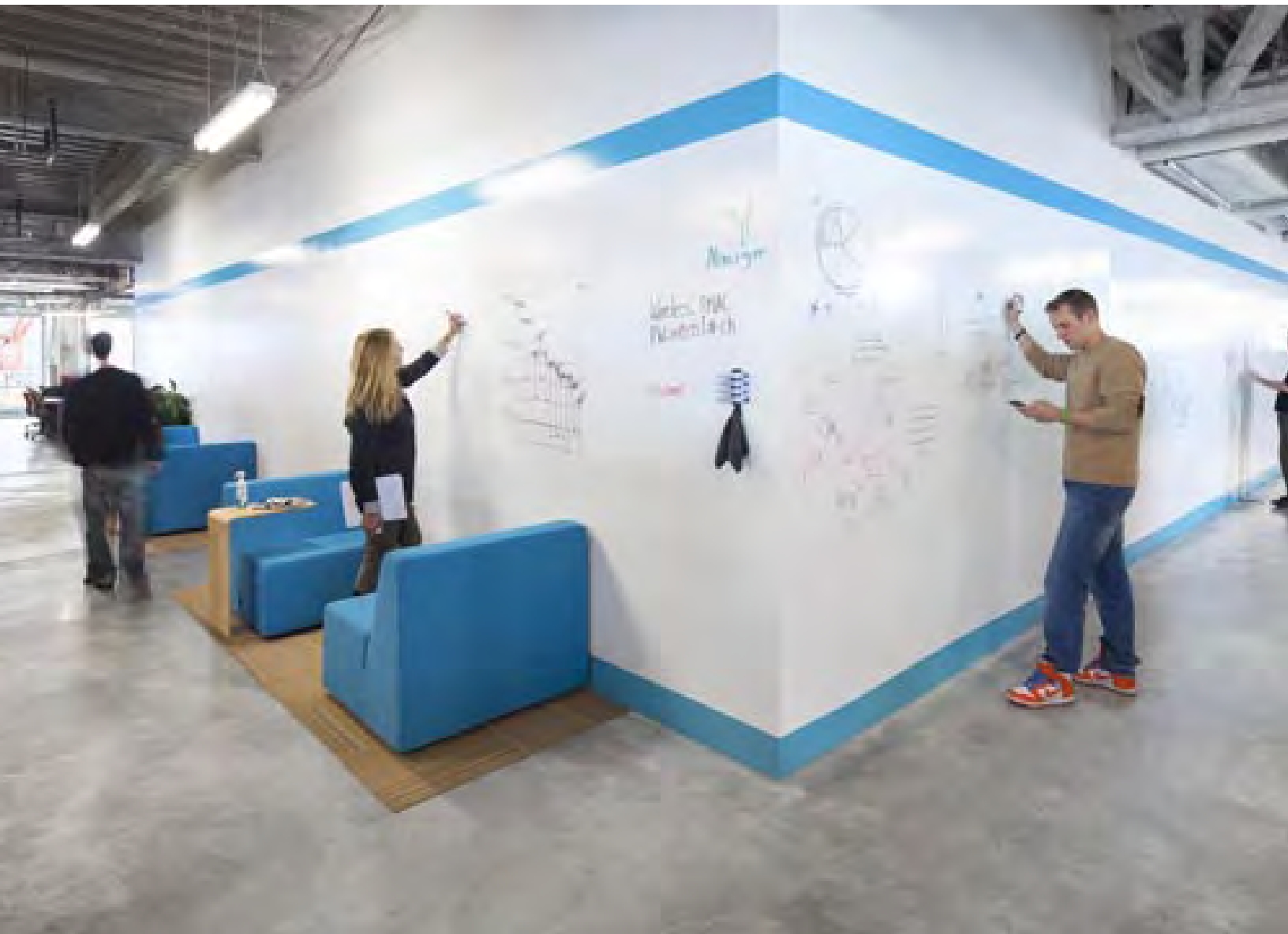


185 W. F STREET

Suite 310

2,376 s.f.

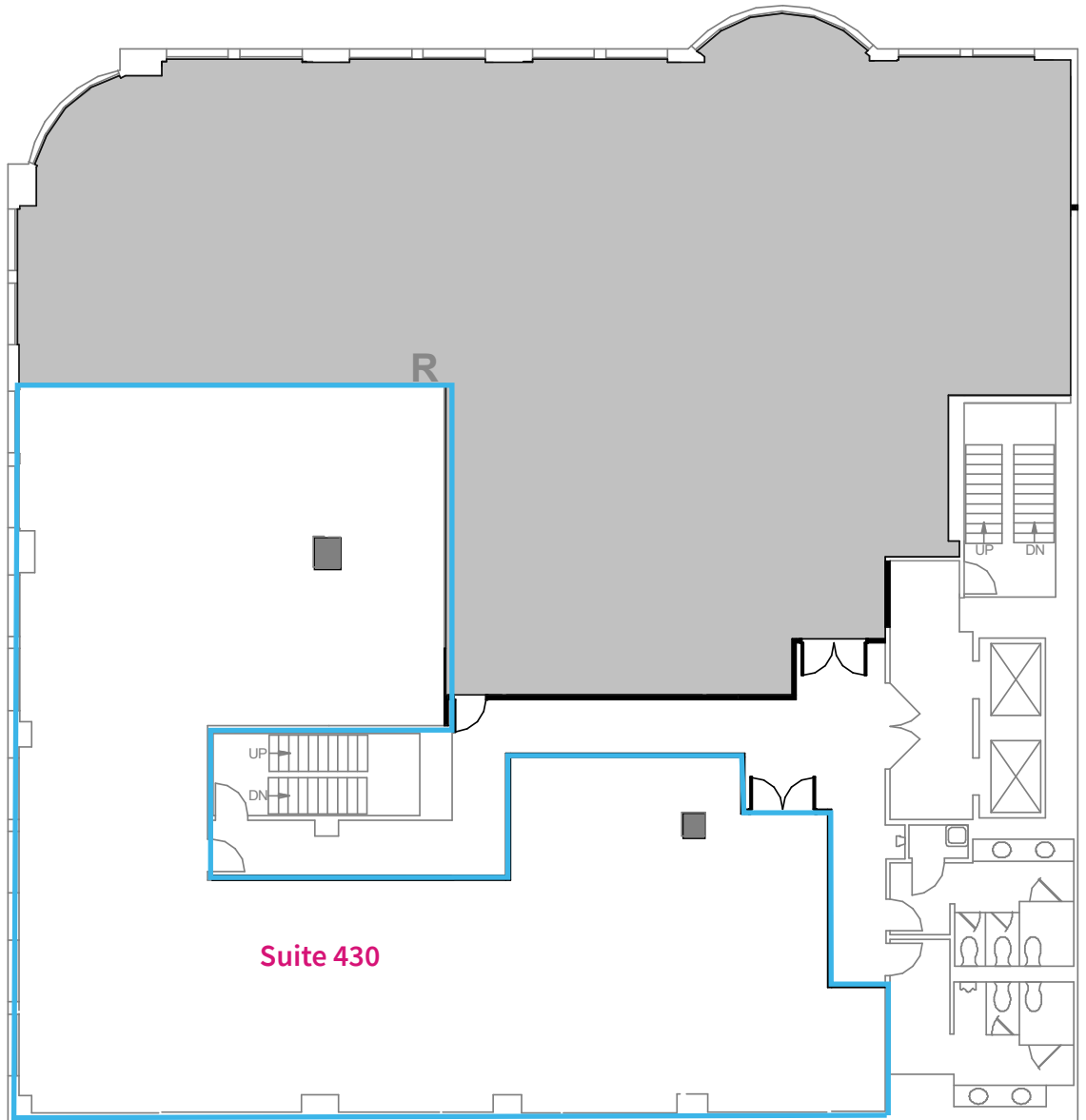




185 W. F STREET

Suite 430

4,233 s.f.





185 W. F STREET



Tony Russell

+1 858 410 1213

tony.russell@am.jll.com

Richard Gonor

+1 858 410 1243

richard.gonor@am.jll.com

Brandt Riedman

+1 858 410 1247

brandt.reidman@am.jll.com