



# 1300 Brighton Road

Pittsburgh, PA 15233

**For Lease: Office or Retail**

**2,328 SF available**

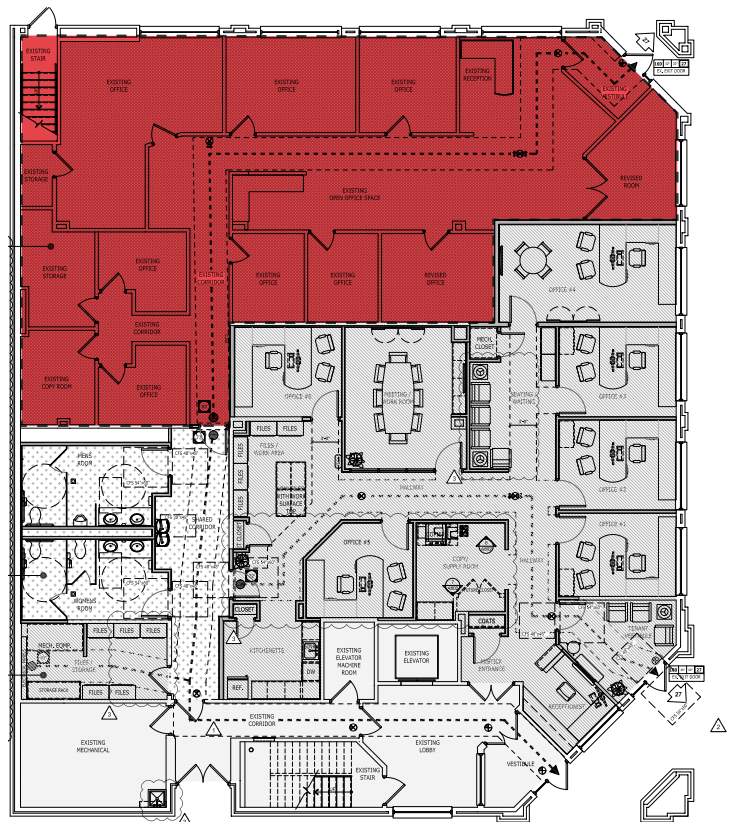
- › 2,328 sf 2nd gen office at the ground floor of Mistick Construction's HQ building
- › Controlled surface parking available at no charge
- › Efficient layout with 11 dedicated office spaces, reception and storage



## 2,328 SF available

- > Walkable to an abundance of retail amenities including Lola Bistro, Commonplace Coffee, Mayfly Market & Rite Aid
- > Located in the historic Mexican War Streets at the intersection of Brighton Rd. & Pennsylvania Ave.

Justin Walbert  
 Associate, Brokerage  
 PA Lic # RS339879  
 C +1 724 884 5050  
 O +1 412 208 1400  
 Justin.Walbert@am.jll.com



Although information has been obtained from sources deemed reliable, JLL does not make any guarantees, warranties or representations, express or implied, as to the completeness or accuracy as to the information contained herein. Any projections, opinions, assumptions or estimates used are for example only. There may be differences between projected and actual results, and those differences may be material. JLL does not accept any liability for any loss or damage suffered by any party resulting from reliance on this information. If the recipient of this information has signed a confidentiality agreement with JLL regarding this matter, this information is subject to the terms of that agreement. ©2022. Jones Lang LaSalle IP, Inc. All rights reserved.