



# HURSTBOURNE

PARK & PLACE

9200 & 9300 Shelbyville Road

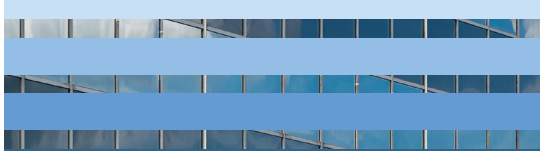


Class A Office Space  
Available for Lease

**ALBANY ROAD**  
REAL ESTATE PARTNERS









# AVAILABILITY



## HURSTBOURNE PLACE



SUITE	SIZE (SF)
-------	-----------

505	2,672
701	4,126
810	3,291
825	7,628
1020	1,398
1025	2,901



## HURSTBOURNE PARK



SUITE	SIZE (SF)
-------	-----------

421	4,914
601	1,516
605	3,072
615	1,846



# PROPERTY OVERVIEW



## BUILDING HIGHLIGHTS

### HURSTBOURNE PLACE



- 13-story Class A mid-rise building | 237,904 SF
- Tallest building in the Hurstbourne/Lyndon offices submarket
- Large floor plates (approximately 18,300 SF per floor)

### HURSTBOURNE PARK



- 8-story Class A mid-rise building | 105,931 SF
- Large floor plates (approximately 13,200 SF per floor)

## HURSTBOURNE AMENITIES

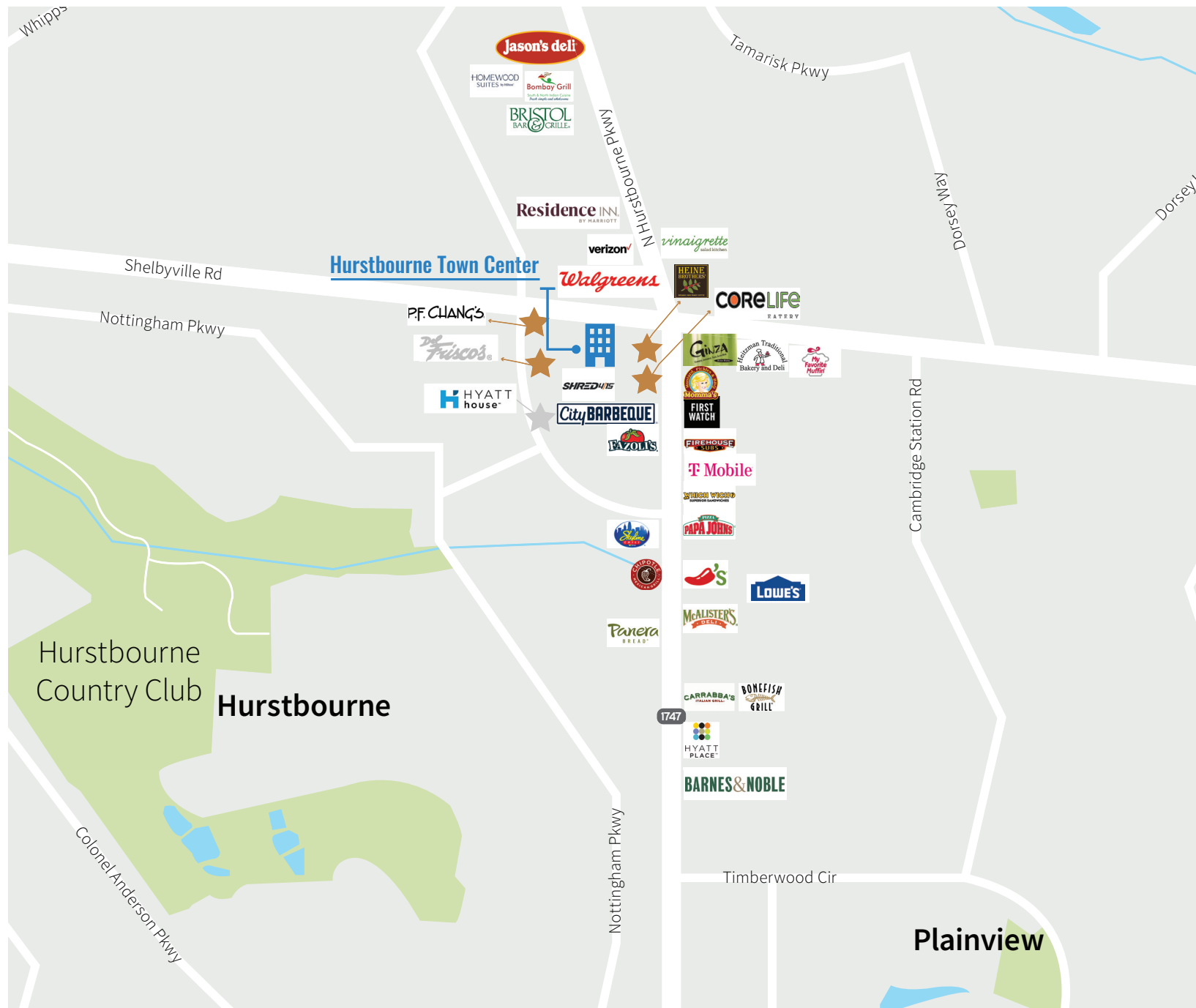
-  Highly visible landmark location
-  Tenant lounge and conference and training room available for tenant use
-  Convenient access to I-64, I-71, I-265, and I-264
-  Located in the heart of Hurstbourne's live-work-play environment
-  Ample parking
-  On-site property management
-  Convenient access to Shred415 fitness
-  Adjacent to popular restaurants including CoreLife Eatery, Heine Brothers' Coffee, Del Frisco's Steakhouse, P.F. Chang's, and Fazoli's
-  Newly-opened Hyatt House located adjacent to Hurstbourne Park
-  Easy access to newly-constructed Rialto Hurstbourne apartments



# AMENITY MAP



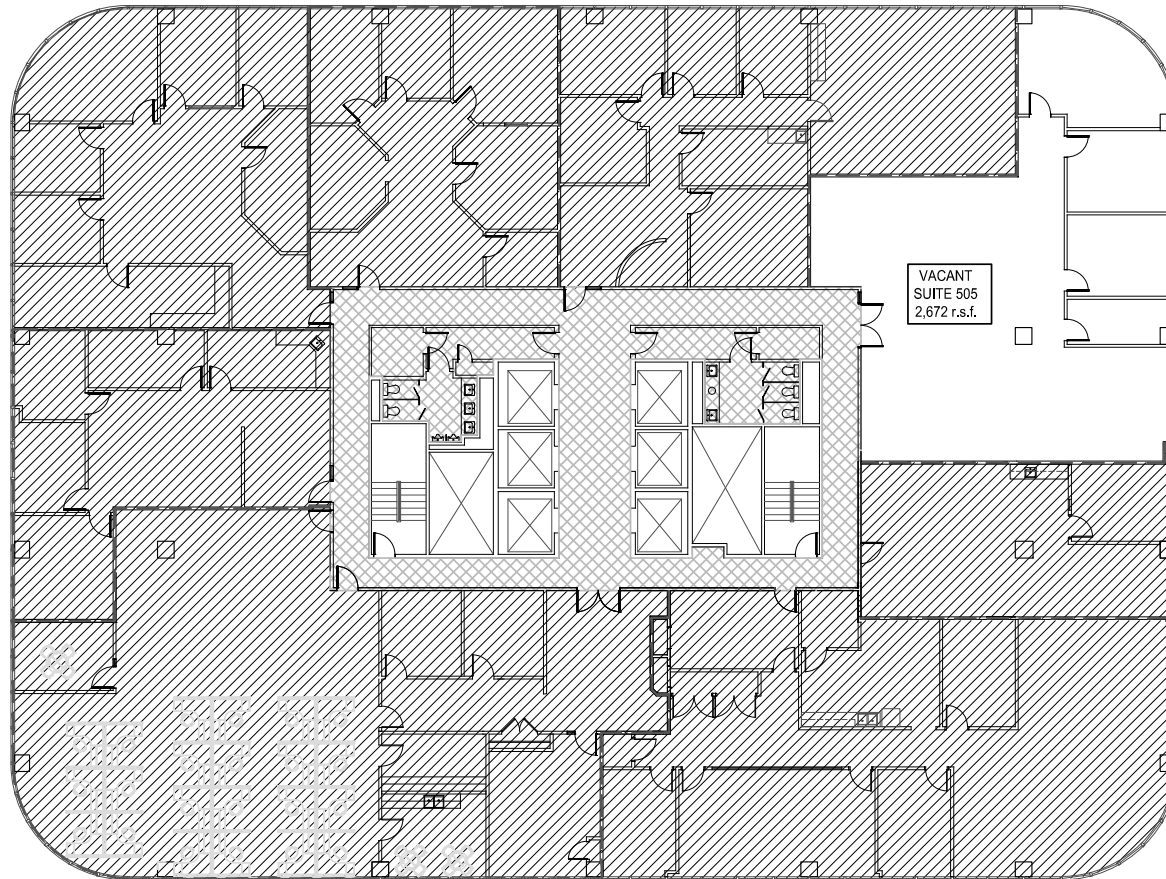
// Conveniently located near many retail and dining options with easy access to highways"





# FLOOR 5

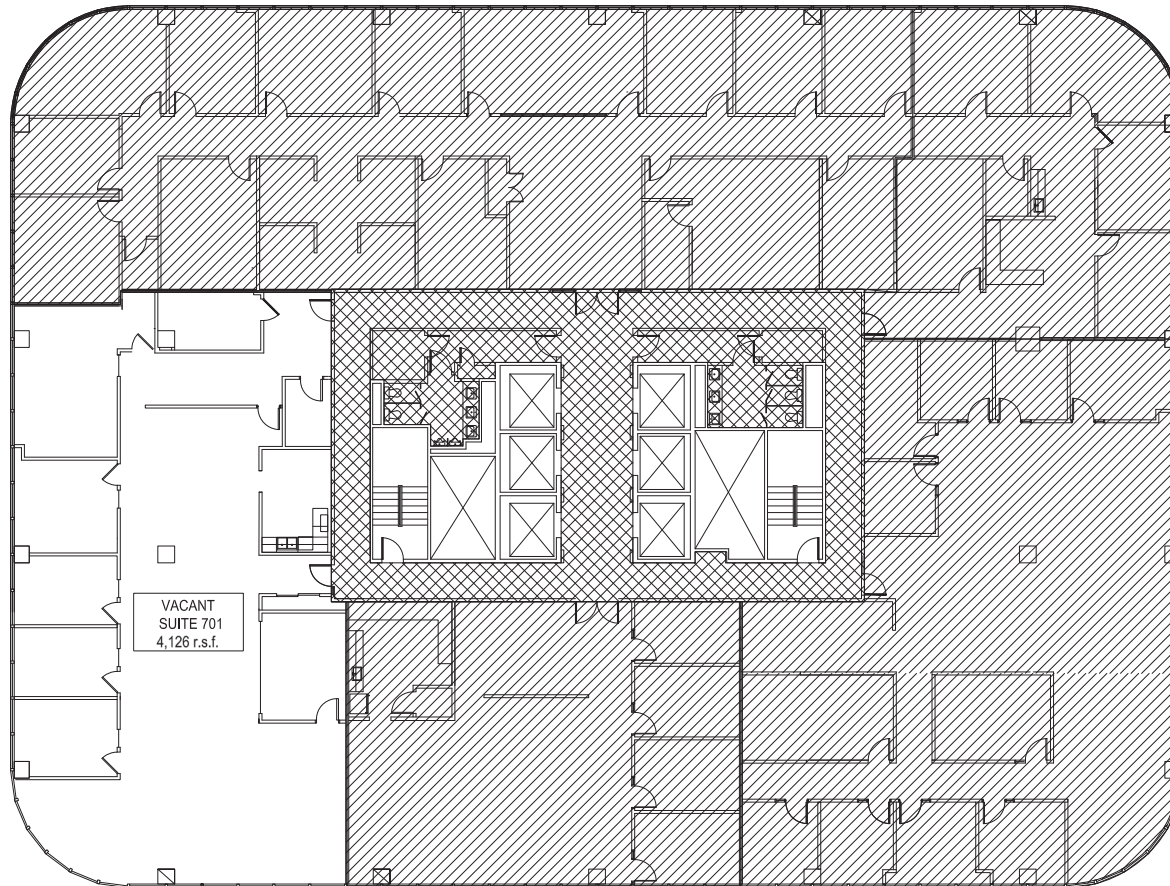
HURSTBOURNEPLACE





# FLOOR 7

HURSTBOURNEPLACE





# FLOOR 8

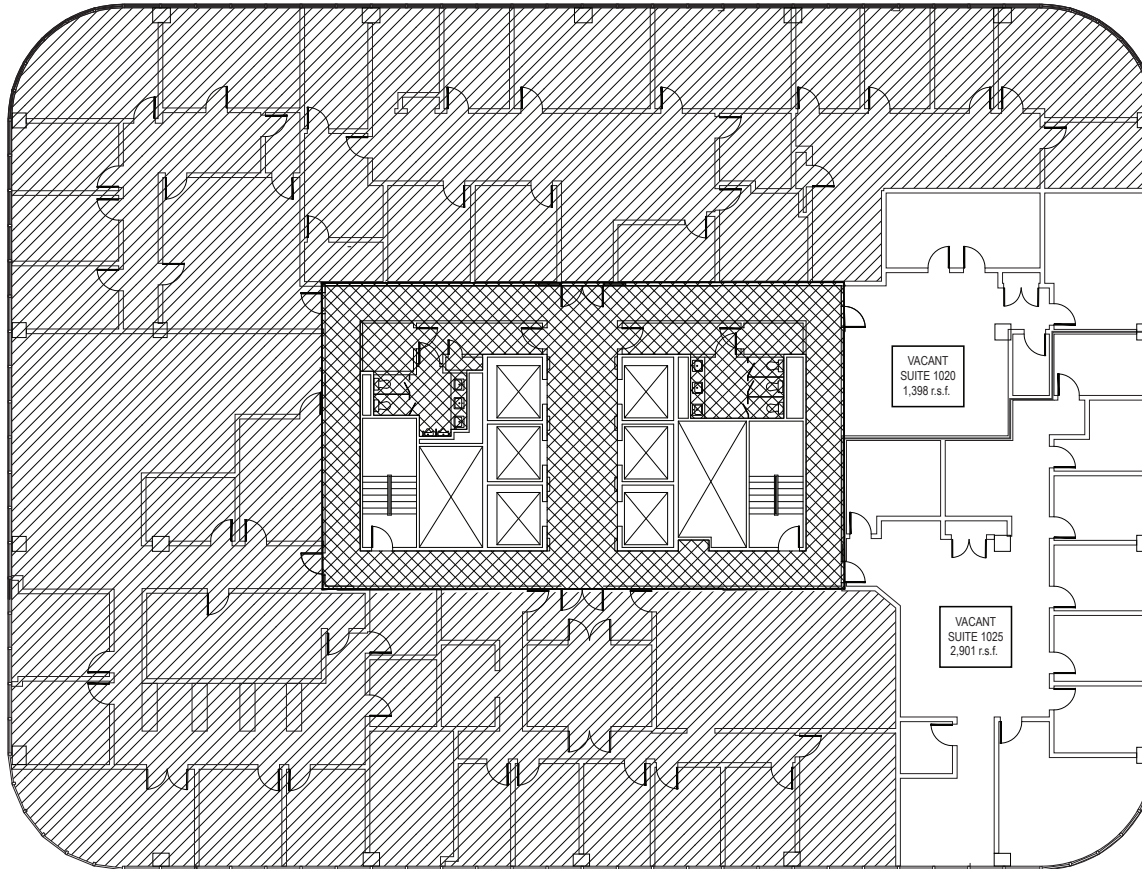
HURSTBOURNEPLACE





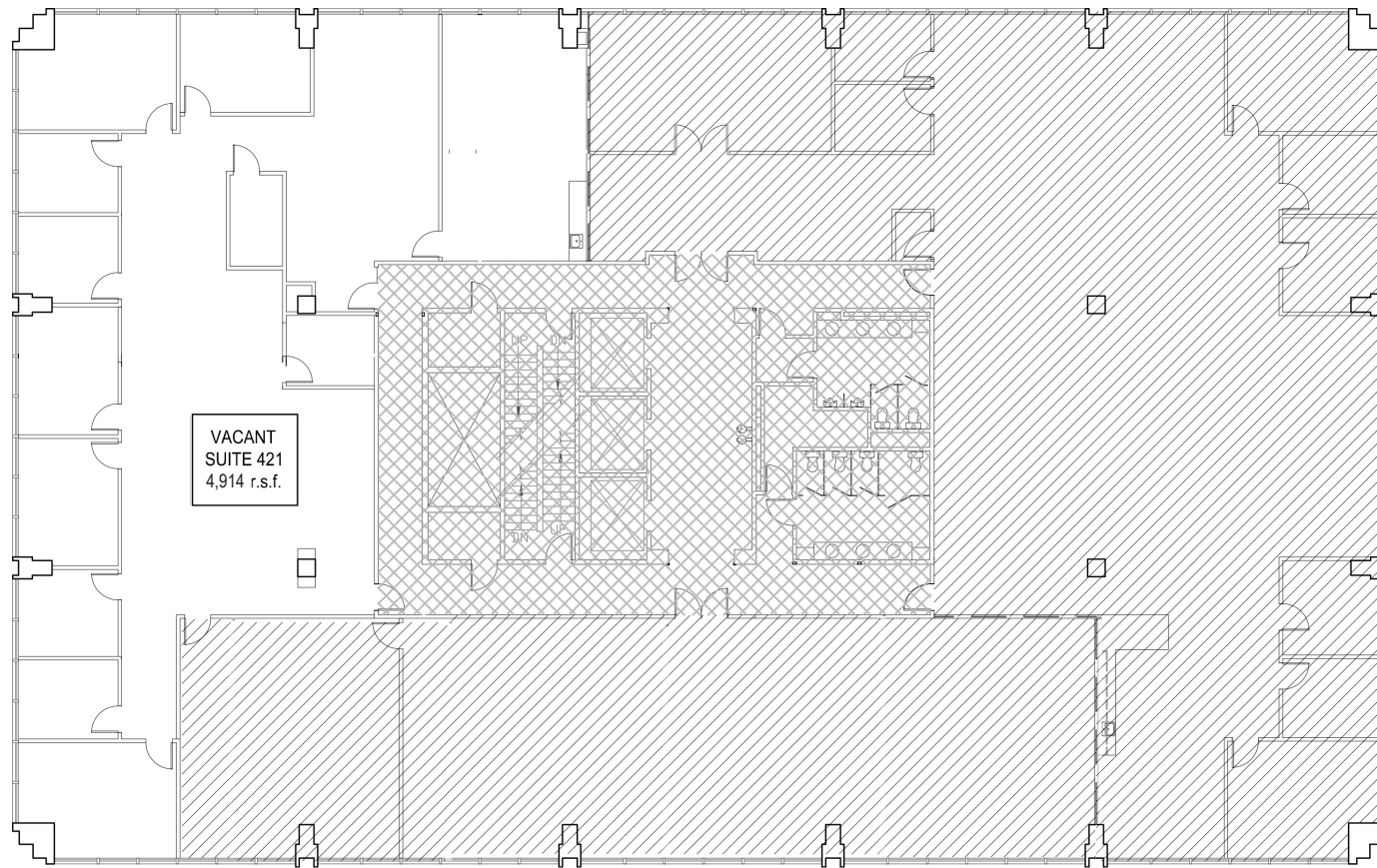
# FLOOR 10

HURSTBOURNEPLACE



# FLOOR 4

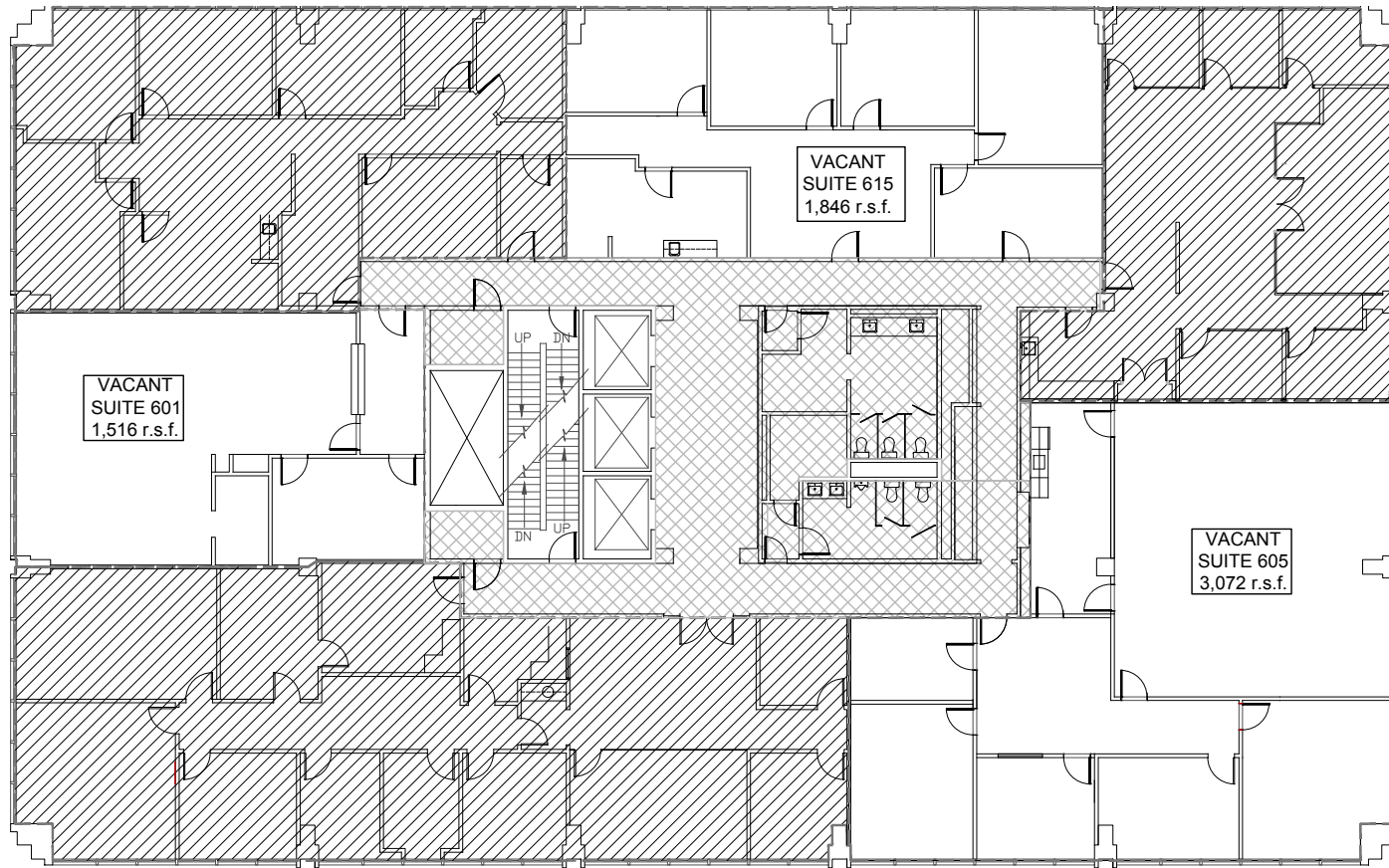
HURSTBOURNEPARK





# FLOOR 6

HURSTBOURNEPARK





# CONTACT

Rick Ashton, CCIM  
Senior Vice President  
T +1 502 394 2521  
M +1 502 939 5018  
[rick.ashton@jll.com](mailto:rick.ashton@jll.com)

Jeff Dreher, SIOR  
Senior Vice President  
T +1 502 394 2519  
M +1 502 291 7560  
[jeff.dreher@jll.com](mailto:jeff.dreher@jll.com)

FOR MORE INFORMATION:



HURSTBOURNE PLACE



HURSTBOURNE PARK

 **HURSTBOURNE**  
P A R K & P L A C E

**ALBANY ROAD**  
REAL ESTATE PARTNERS