



# 402-404 Lippincott Drive

Marlton, NJ 08053

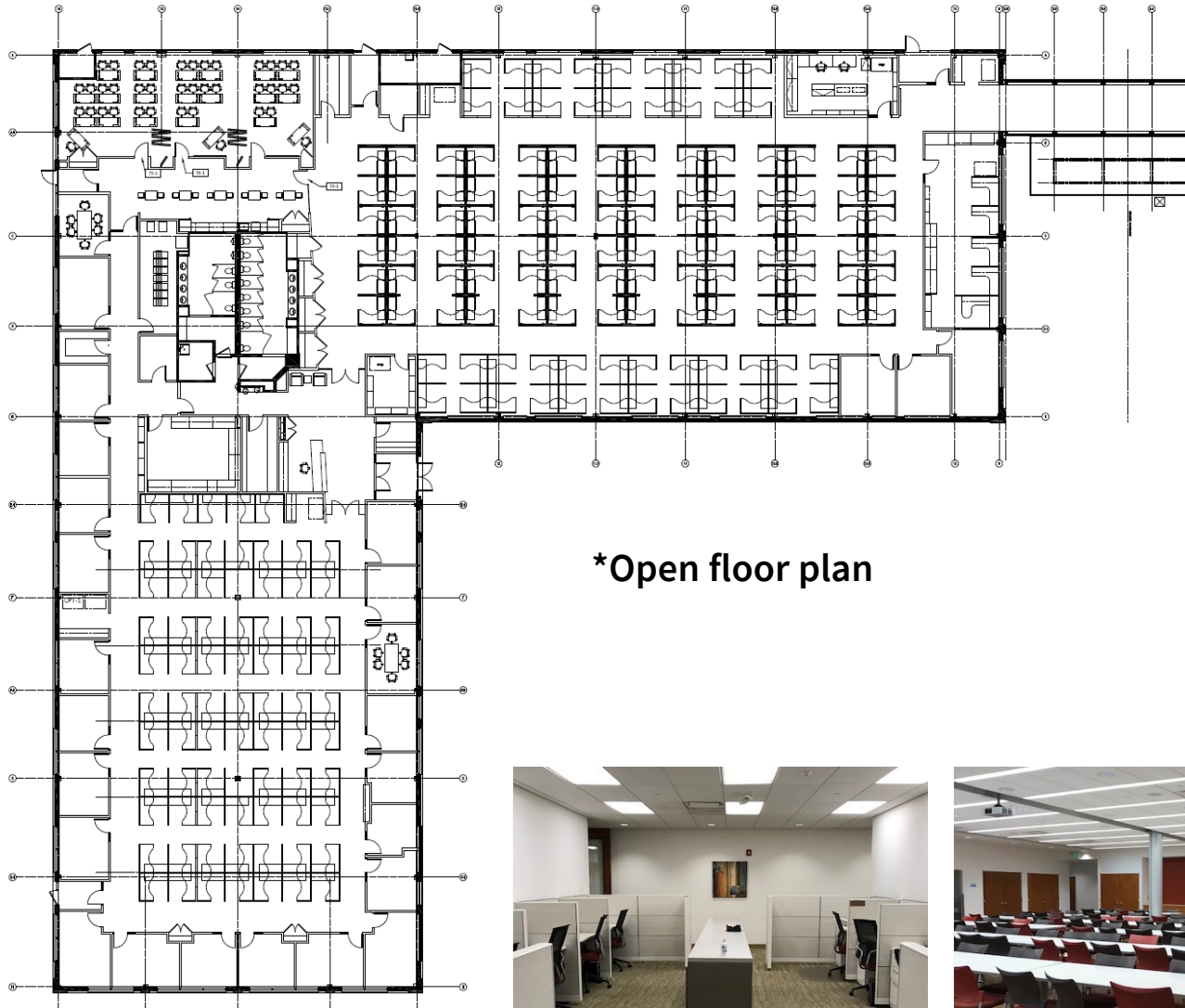




# 402 Lippincott Drive

## Overview

- 53,000 SF available (divisible) – stand alone building(s)
- Parking ratio: 4.5/1,000 SF
- Furniture can be included
- Open layouts and partitioned office areas
- 30 minutes to Philadelphia
- Large training facility
- Numerous conference rooms with high end finishes
- Grand entrance / lobby / reception
- Close proximity to Virtua Marlton hospital
- Sub-lease or potential for direct deal
- Numerous amenities in close proximity



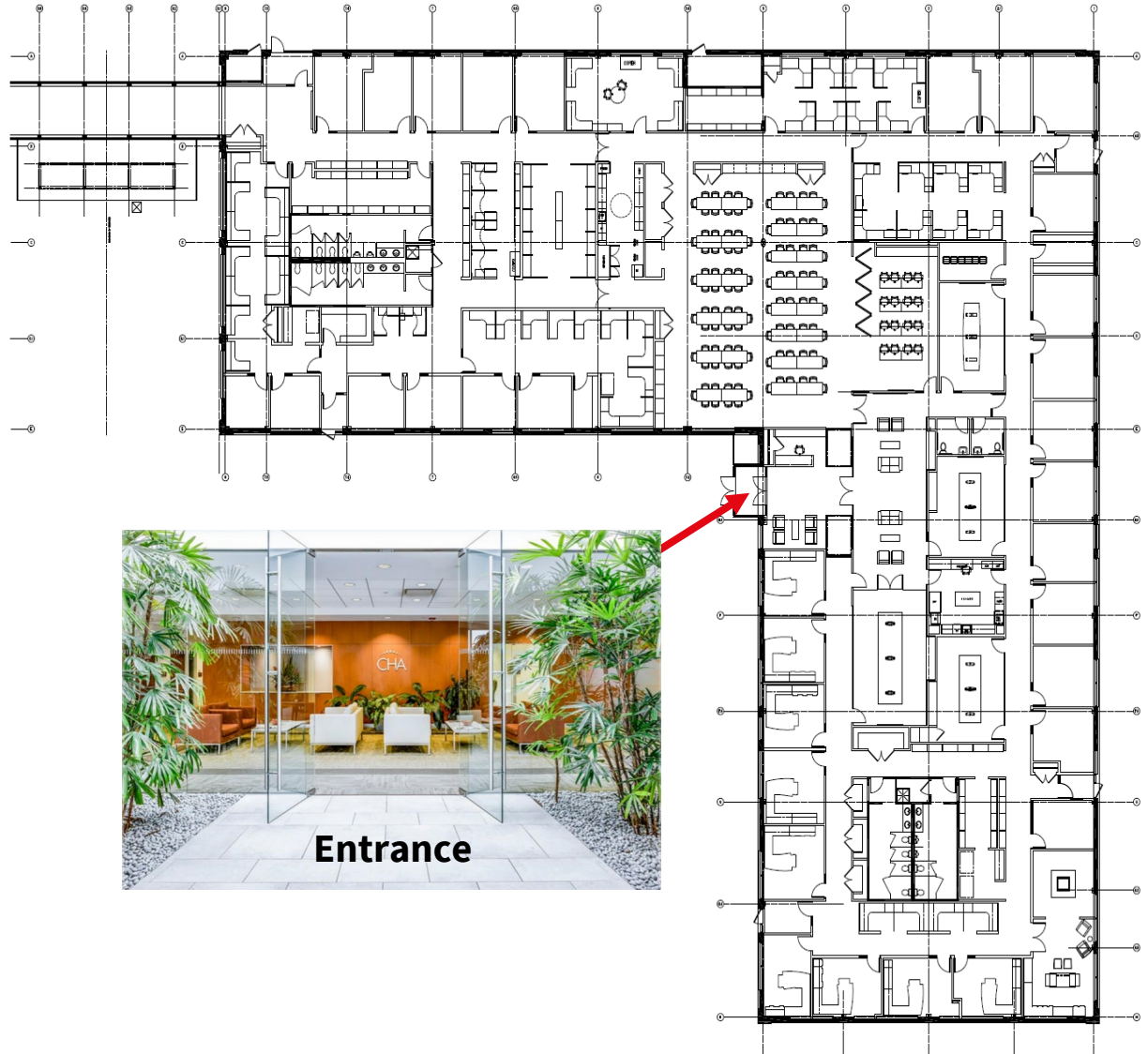
**\*Open floor plan**



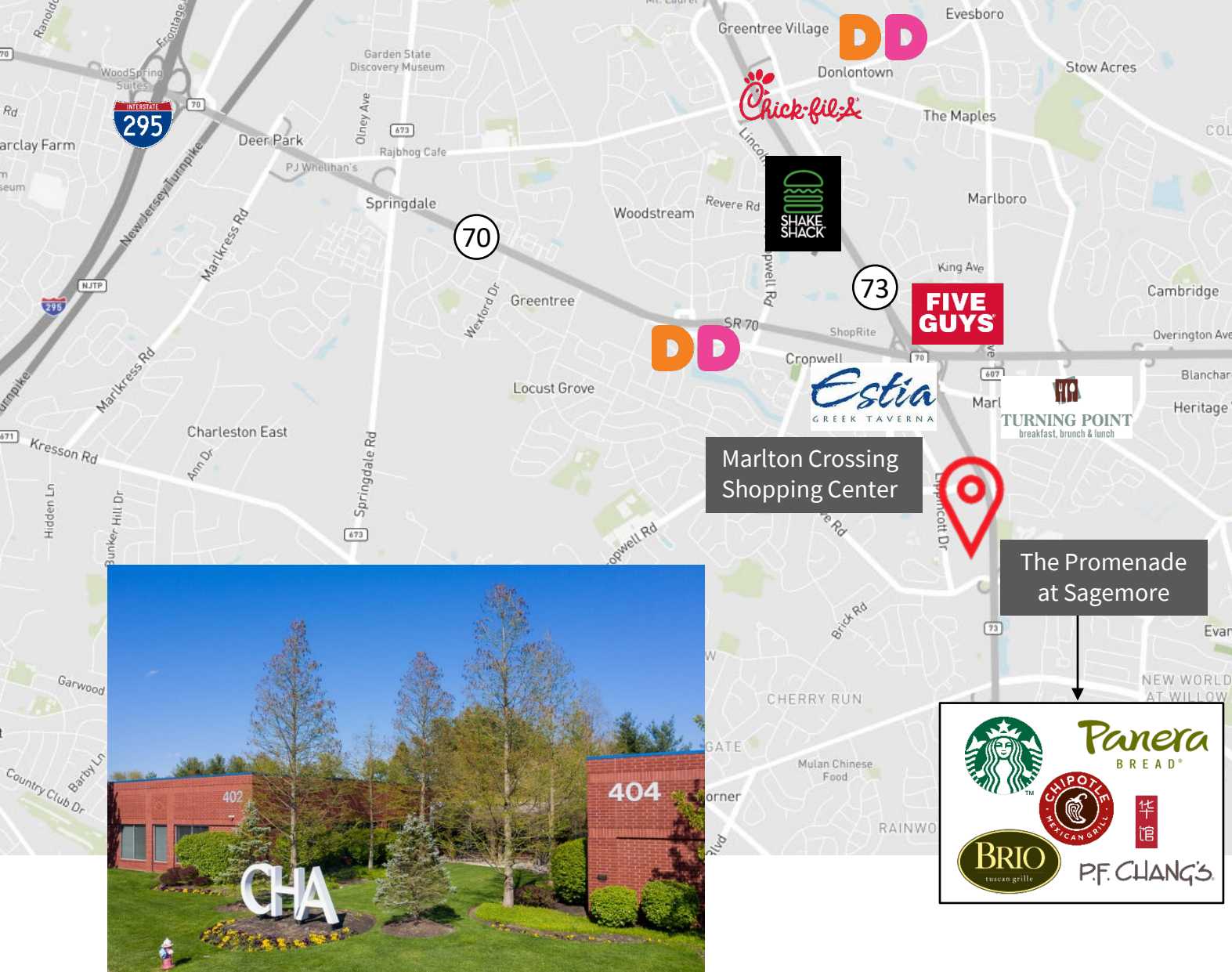
# 404 Lippincott Drive



**\*Private offices and conference rooms**







## Contact

Dan Close  
+1 856 324 5306  
dan.close@am.jll.com

Rick Widerman  
+1 856 324 5301  
rick.widerman@am.jll.com

Although information has been obtained from sources deemed reliable, JLL does not make any guarantees, warranties or representations, express or implied, as to the completeness or accuracy as to the information contained herein. Any projections, opinions, assumptions or estimates used are for example only. There may be differences between projected and actual results, and those differences may be material. JLL does not accept any liability for any loss or damage suffered by any party resulting from reliance on this information. If the recipient of this information has signed a confidentiality agreement with JLL regarding this matter, this information is subject to the terms of that agreement. ©2022. Jones Lang LaSalle IP, Inc. All rights reserved.

Jones Lang LaSalle Brokerage, Inc. | 220 Lake Drive East, Suite 102, Cherry Hill, NJ 08002 | +1 856 324 5300

